

REL S.O.	-	VOLTS	460	ENCLOSURE	TEBC	WYE CONN EQ CKT OHMS PER PHASE			
FRAME	FL2898	AMPS	156	MAX SAFE RPM	4800	(AT BASE RATING, 25 °C)			
HP	125	DUTY	CONT	IM (AMPS)	76	R1	.0221	X1	.156
BASE SPEED	1780	S.F.	1.0	P.F.@NL/FL	.034/.802	R2	.0147	X2	.203
PHASE/HERTZ	3/60	AMB °C/INSUL	40/H	WK <sup>2</sup> (Lb-Ft <sup>2</sup> )	11.			XM	3.54

**RATED FULL LOAD DATA**

	RPM	HP	TORQUE LB-FT	FUND VOLTS	FREQ-HZ	AMPS
BASE SPEED	1781	125	369	460	60	157
MAX SPEED	3556	125	185	460	120	149
MIN SPEED	0	0	369	10.1	.642	157

**LOAD PERFORMANCE AT BASE SPEED**

	RPM	HP	TORQUE LB-FT	FUND VOLTS	FREQ-HZ	AMPS
NO LOAD	1800	0	0	460	60	74.2
1/4	1795	31.3	92	460	60	83.6
1/2	1791	62.6	183	460	60	102
3/4	1786	93.7	276	460	60	127
FULL LOAD	1781	125	369	460	60	157
O/L	1757	247	737	460	60	295

**BLOWER  
DATA**

VOLTS	PH/HZ	FL AMPS	LR AMPS	FRAME	CFM

REMARKS: TYPICAL DATA

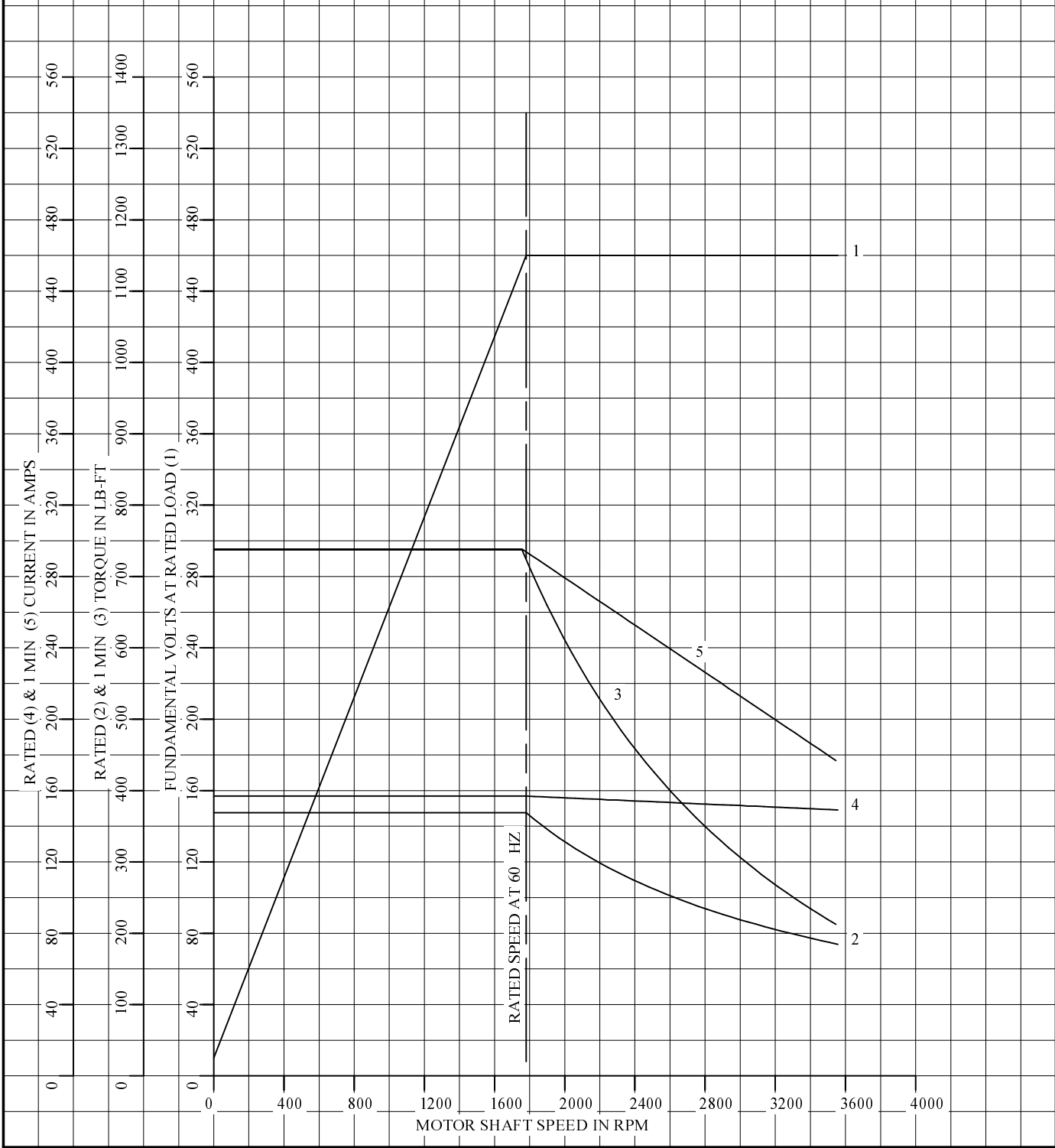


DR. BY R. SMITH  
 CK. BY R. SMITH  
 APP. BY S. EVON  
 DATE 6-27-08

**A-C MOTOR  
 PERFORMANCE DATA L4053A**  
 ISSUE DATE 6-27-08

REL S.O.	-	VOLTS	460	ENCLOSURE	TEBC	WYE CONN EQ CKT OHMS PER PHASE	
FRAME	FL2898	AMPS	156	MAX SAFE RPM	4800	(AT BASE RATING, 25 °C)	
HP	125	DUTY	CONT	IM (AMPS)	76	R1 .0221	X1 .156
BASE SPEED	1780	S.F.	1.0	P.F.@NL/FL	.034/.802	R2 .0147	X2 .203
PHASE/HERTZ	3/60	AMB °C/INSUL	40/H	WK <sup>2</sup> (Lb-Ft <sup>2</sup> )	11.		XM 3.54

VARIABLE SPEED AC MOTOR CURVES



REMARKS: TYPICAL DATA  
DATA VALID FOR NAMEPLATE SPEED RANGE ONLY



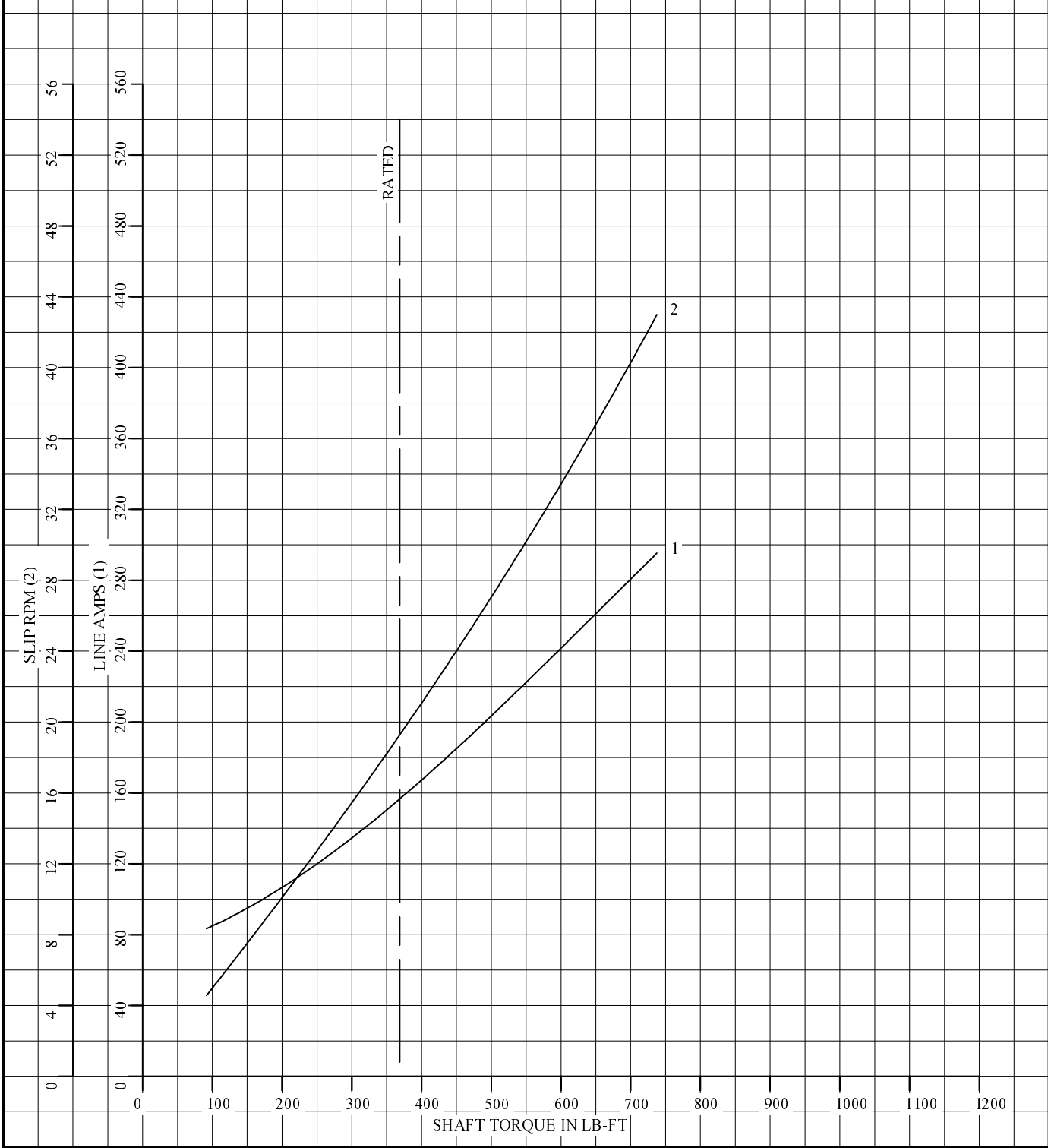
DR. BY R. SMITH  
CK. BY R. SMITH  
APP. BY S. EVON  
DATE 6-27-08

A-C MOTOR  
PERFORMANCE  
CURVES

L4053A  
SH 1 OF 2  
ISSUE DATE 6-27-08

REL S.O.	-	VOLTS	460	ENCLOSURE	TEBC	WYE CONN EQ CKT OHMS PER PHASE	
FRAME	FL2898	AMPS	156	MAX SAFE RPM	4800	(AT BASE RATING, 25 °C)	
HP	125	DUTY	CONT	IM (AMPS)	76	R1 .0221	X1 .156
BASE SPEED	1780	S.F.	1.0	P.F.@NL/FL	.034/.802	R2 .0147	X2 .203
PHASE/HERTZ	3/60	AMB °C/INSUL	40/H	WK <sup>2</sup> (Lb-Ft <sup>2</sup> )	11.		XM 3.54

LOAD PERFORMANCE (CONSTANT V/Hz RANGE)



REMARKS: TYPICAL DATA  
DATA VALID FOR NAMEPLATE SPEED RANGE ONLY



DR. BY R. SMITH  
CK. BY R. SMITH  
APP. BY S. EVON  
DATE 6-27-08

A-C MOTOR  
PERFORMANCE  
CURVES

L4053A  
SH 2 OF 2  
ISSUE DATE 6-27-08