



## AC Induction Motor Performance Data

Record # 37140

Typical performance - not guaranteed values

<b>Winding:</b> 37WGT864	<b>Type:</b> 3739M	<b>Enclosure:</b> TEFC
--------------------------	--------------------	------------------------

Nameplate Data				General Characteristics at 460 V, 60 Hz: High Volt Connection	
Rated Output (HP)	7.5			Full Load Torque	22.3 LB-FT
Volts	230/460			Start Configuration	DOL
Full Load Amps	19/9.5			Break Down Torque	71.3 LB-FT
R.P.M.	1770			Pull-Up Torque	38.7 LB-FT
Hz	60	Phase	3	Locked-rotor Torque	46.5 LB-FT
NEMA Design Code	A	KVA Code	J	Starting Current	73 Amps
Service Factor	1			No-load Current	4.3 Amps
NEMA Nom. Eff.	91.7	P.F.	81	Line-line Res. @ 25°C.	1.34 Ohms
Rating - Duty	40C AMB-CONT			Temp. Rise @ Rated Load	69°C
S.F. Amps				Temp. Rise @ S.F. Load	

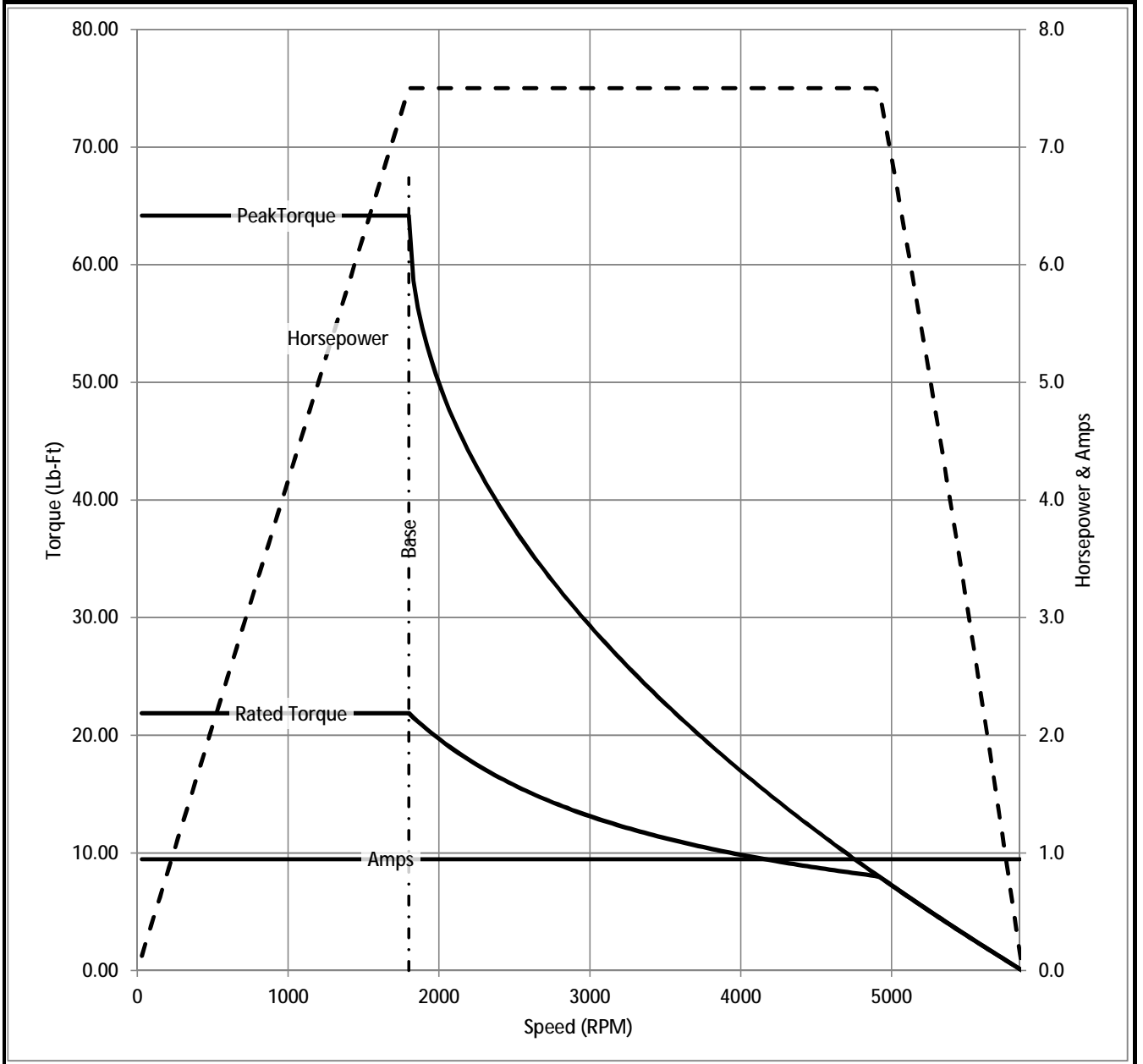
## Load Characteristics at 460 Volts, 60 Hz, 7.5 HP

% of Rated Load	25	50	75	100	125	150	S.F.
Power Factor	42	65	75	81	83	85	
Efficiency	86.9	91.1	92.1	91.7	90.8	89.7	
Speed	1793	1786	1778	1770	1760	1750	
Line Amperes	4.8	5.95	7.62	9.47	11.6	13.9	

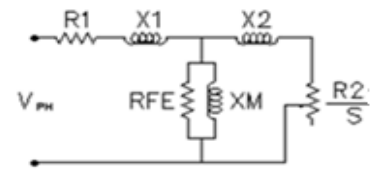
Baldor Electric Company Fort Smith, Arkansas


BALDOR • RELIANCE®

Catalog	IDCSWDM3710T	NP VOLTS	230/460	ENCLOSURE	TEFC	WYE CONN EQ CKT OHMS PER PHASE (BASE RATING, 20C)			
FRAME	213TC	NP AMPS	19/9.5	Base Volts	460	R1	0.633	X1	2.477
HP	7.5 HP	DUTY	Cont	Base AMPS	9.47	R2	0.402	X2	1.907
BASE SPEED	1800	MAX SAFE RPM	6000	Slip Hz	1.00			XM	57.989
PHASE/HZ	3/60	AMB <sup>0</sup> C/INSUL	40/H	WK <sup>2</sup> (lb-ft <sup>2</sup> )	0.959				



Remarks: Calculated Data



 <b>A MEMBER OF THE ABB GROUP</b>	DR BY	<u>ENR</u>	<b>A-C MOTOR PERFORMANCE CURVES</b>	<b>37H885T864G1</b>
	CK BY			
	APP BY	<u>ENR</u>	ISSUE DATE	3/6/2013
	DATE	<u>3/6/2013</u>		