



## AC Induction Motor Performance Data

Record # 37139

Typical performance - not guaranteed values

<b>Winding:</b> 37WGT857	<b>Type:</b> 3756M	<b>Enclosure:</b> TEFC
--------------------------	--------------------	------------------------

Nameplate Data				General Characteristics at 460 V, 60 Hz: High Volt Connection	
Rated Output (HP)	10			Full Load Torque	29.9 LB-FT
Volts	230/460			Start Configuration	DOL
Full Load Amps	25/12.5			Break Down Torque	102 LB-FT
R.P.M.	1770			Pull-Up Torque	53.6 LB-FT
Hz	60	Phase	3	Locked-rotor Torque	74.2 LB-FT
NEMA Design Code	B	KVA Code	K	Starting Current	105 Amps
Service Factor	1			No-load Current	5.44 Amps
NEMA Nom. Eff.	92.4	P.F.	81	Line-line Res. @ 25°C.	0.799 Ohms
Rating - Duty	40C AMB-CONT			Temp. Rise @ Rated Load	76°C
S.F. Amps				Temp. Rise @ S.F. Load	

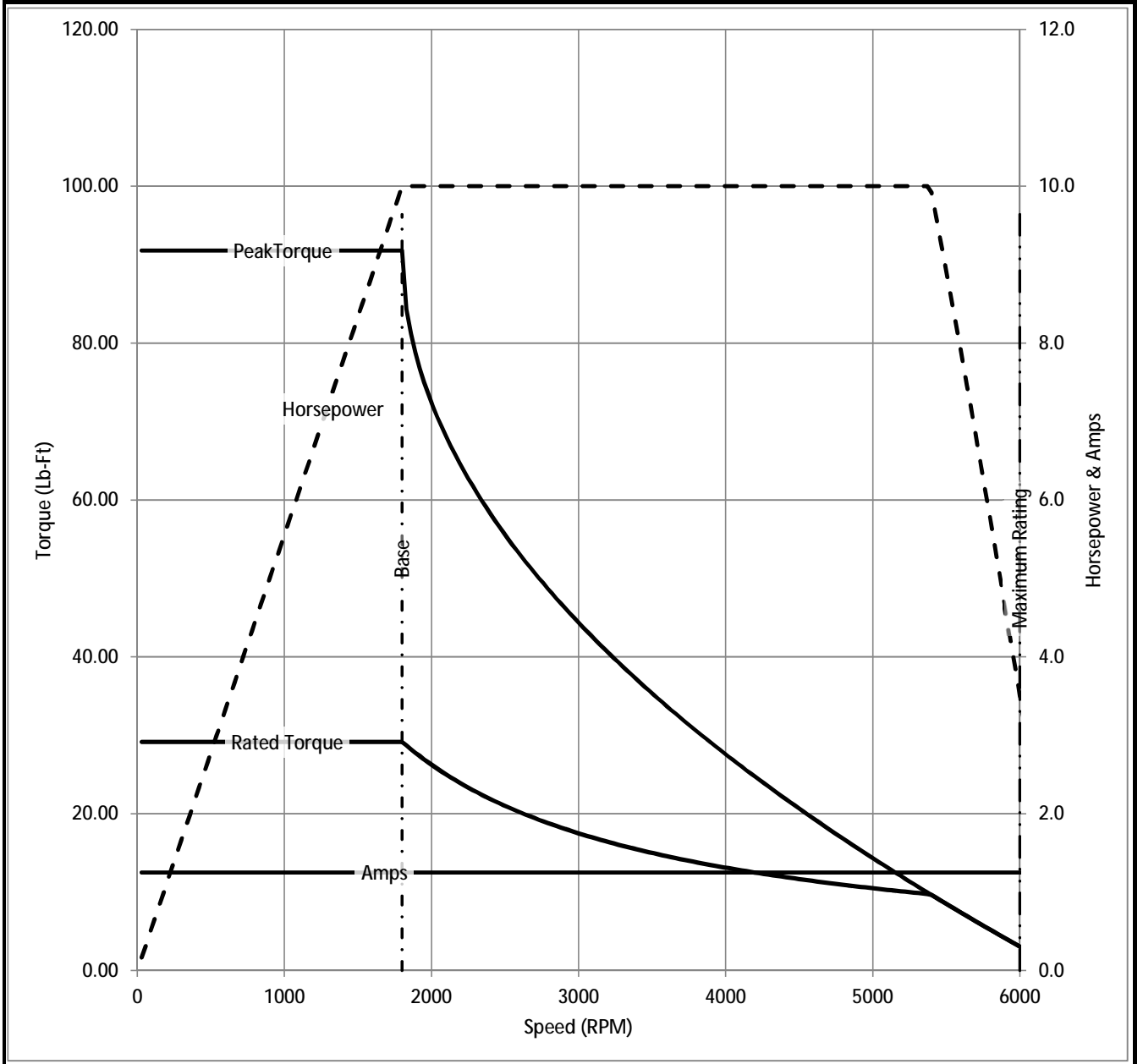
## Load Characteristics at 460 Volts, 60 Hz, 10 HP

% of Rated Load	25	50	75	100	125	150	S.F.
Power Factor	43	65	76	81	83	84	
Efficiency	88	92.6	93.3	93	92.4	91.5	
Speed	1793	1786	1778	1770	1762	1752	
Line Amperes	6.18	7.79	10	12.5	15.3	18.3	

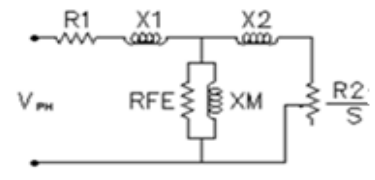
Baldor Electric Company Fort Smith, Arkansas

BALDOR • RELIANCE®

Catalog	IDCSWDM3714T	NP VOLTS	230/460	ENCLOSURE	TEFC	WYE CONN EQ CKT OHMS PER PHASE (BASE RATING, 20C)			
FRAME	215TC	NP AMPS	25/12.5	Base Volts	460	R1	0.423	X1	1.876
HP	10 HP	DUTY	Cont	Base AMPS	12.5	R2	0.300	X2	1.587
BASE SPEED	1800	MAX SAFE RPM	6000	Slip Hz	1.00			XM	44.849
PHASE/HZ	3/60	AMB <sup>0</sup> C/INSUL	40/H	WK <sup>2</sup> (lb-ft <sup>2</sup> )	1.38				



Remarks: Calculated Data



 <b>BALDOR</b> A MEMBER OF THE ABB GROUP	DR BY	<u>ENR</u>	<b>37H885T857G1</b> A-C MOTOR PERFORMANCE CURVES	ISSUE DATE    3/6/2013
	CK BY			
	APP BY	<u>ENR</u>		
	DATE	<u>3/6/2013</u>		