

REL S.O.	-	VOLTS	460	ENCLOSURE	DPFV	WYE CONN EQ CKT OHMS PER PHASE			
FRAME	FL1852	AMPS	39	MAX SAFE RPM	7200	(AT BASE RATING, 25 °C)			
HP	30	DUTY	CONT	IM (AMPS)	17.5	R1	.211	X1	.727
BASE SPEED	1745	S.F.	1.0	P.F. @NL/FL	.080/.838	R2	.155	X2	.742
PHASE/HERTZ	3/60	AMB °C/INSUL	40/H	WK ² (Lb-Ft ²)	.8			XM	12.7

RATED FULL LOAD DATA

	RPM	HP	TORQUE LB-FT	FUND VOLTS	FREQ-HZ	AMPS
BASE SPEED	1745	30.0	90	460	60	41.2
MAX SPEED	3473	30.0	45	460	120	38.7
MIN SPEED	0	0	90	25.5	1.83	41.2

LOAD PERFORMANCE AT BASE SPEED

	RPM	HP	TORQUE LB-FT	FUND VOLTS	FREQ-HZ	AMPS
NO LOAD	1800	0	0	460	60	21.2
1/4	1787	7.50	22	460	60	23.1
1/2	1774	15.0	44	460	60	27.4
3/4	1760	22.5	67	460	60	33.6
FULL LOAD	1745	30.0	90	460	60	41.2
O/L	1666	57.3	181	460	60	80.9

REMARKS: TYPICAL DATA

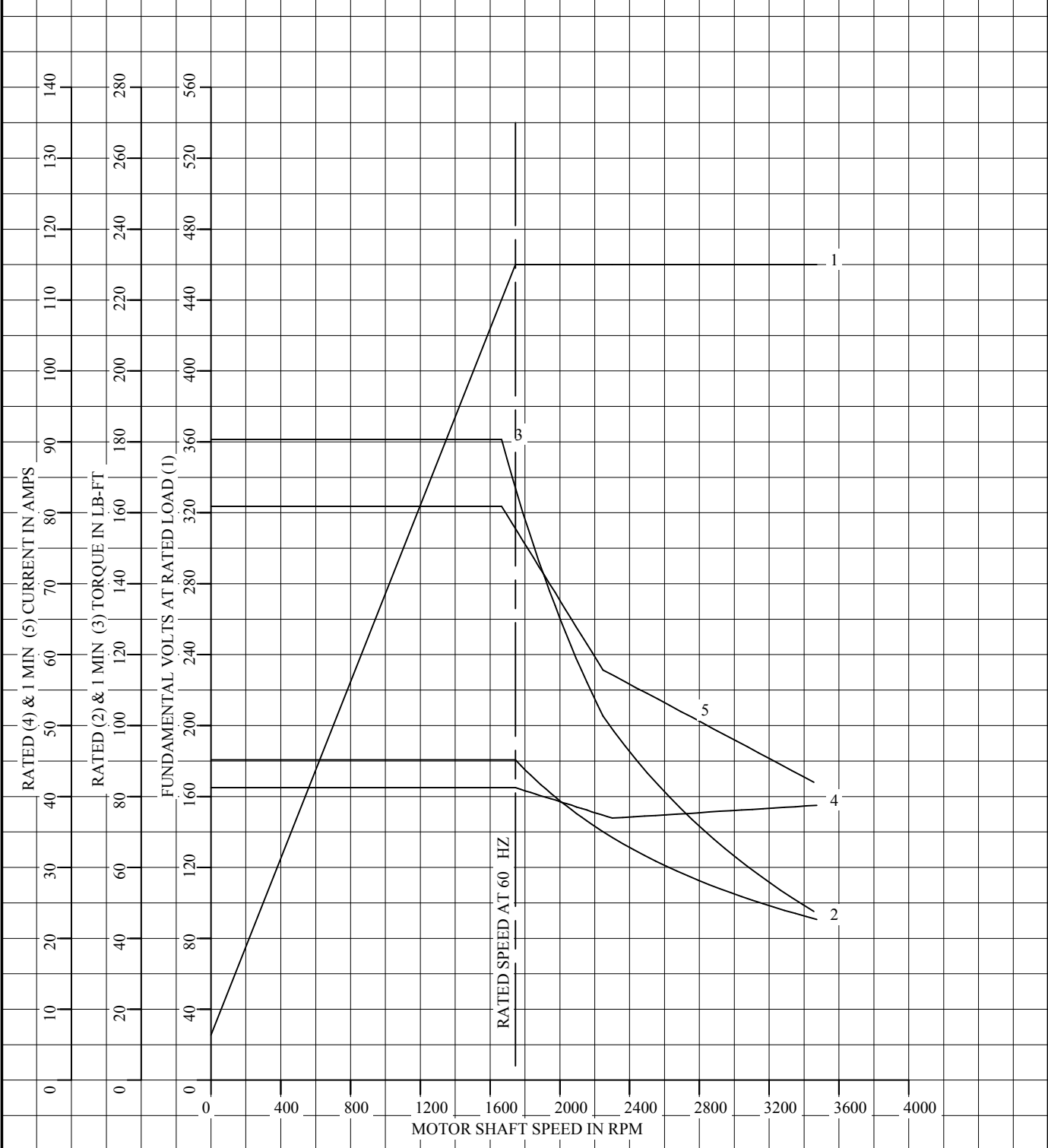


DR. BY B. GRANT
 CK. BY B. GRANT
 APP. BY T. EVON
 DATE 3-31-98

**A-C MOTOR
 PERFORMANCE DATA** L1206A
 ISSUE DATE 12-12-13

REL S.O.	-	VOLTS	460	ENCLOSURE	DPFV	WYE CONN EQ CKT OHMS PER PHASE	
FRAME	FL1852	AMPS	39	MAX SAFE RPM	7200	(AT BASE RATING, 25 °C)	
HP	30	DUTY	CONT	IM (AMPS)	17.5	R1	.211
BASE SPEED	1745	S.F.	1.0	P.F. @NL/FL	.080/.838	R2	.155
PHASE/HERTZ	3/60	AMB °C/INSUL	40/H	WK ² (Lb-Ft ²)	.8	X1	.727
						X2	.742
						XM	12.7

VARIABLE SPEED AC MOTOR CURVES



REMARKS: TYPICAL DATA
DATA VALID FOR NAMEPLATE SPEED RANGE ONLY



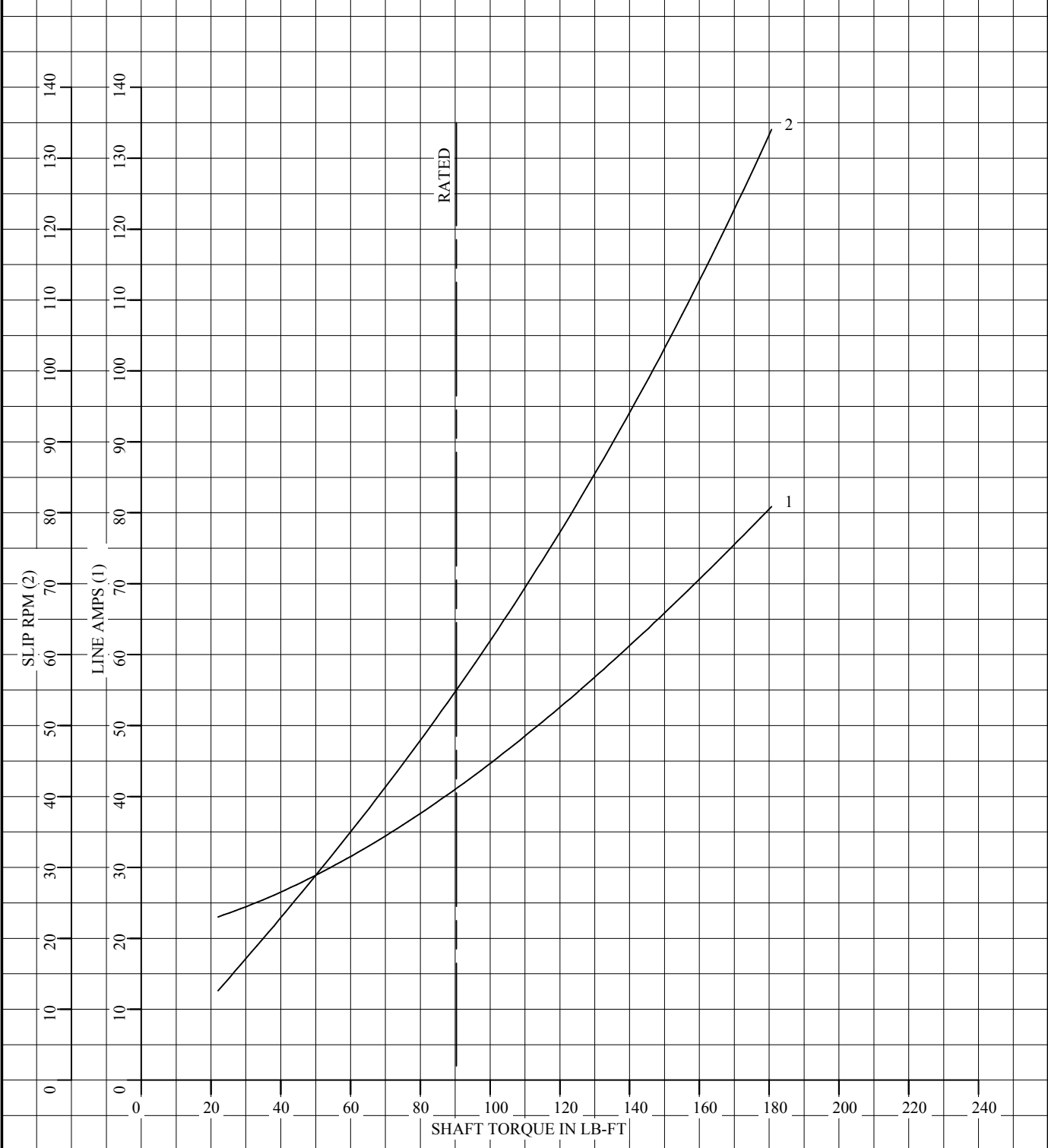
DR. BY B. GRANT
CK. BY B. GRANT
APP. BY T. EVON
DATE 3-31-98

A-C MOTOR
PERFORMANCE
CURVES

L1206A
SH 1 OF 2
ISSUE DATE 12-12-13

REL S.O.	-	VOLTS	460	ENCLOSURE	DPFV	WYE CONN EQ CKT OHMS PER PHASE	
FRAME	FL1852	AMPS	39	MAX SAFE RPM	7200	(AT BASE RATING, 25 °C)	
HP	30	DUTY	CONT	IM (AMPS)	17.5	R1	.211
BASE SPEED	1745	S.F.	1.0	P.F. @NL/FL	.080/.838	R2	.155
PHASE/HERTZ	3/60	AMB °C/INSUL	40/H	WK ² (Lb-Ft ²)	.8	X1	.727
						X2	.742
						XM	12.7

LOAD PERFORMANCE (CONSTANT V/Hz RANGE)



REMARKS: TYPICAL DATA
DATA VALID FOR NAMEPLATE SPEED RANGE ONLY



DR. BY B. GRANT
CK. BY B. GRANT
APP. BY T. EVON
DATE 3-31-98

**A-C MOTOR
PERFORMANCE
CURVES**

L1206A
SH 2 OF 2
ISSUE DATE 12-12-13