

REL S.O.	-	VOLTS	460	ENCLOSURE	DPFV	WYE CONN EQ CKT OHMS PER PHASE			
FRAME	RL2570	AMPS	63.34	MAX SAFE RPM	5000	(AT BASE RATING, 25 °C)			
HP	50	DUTY	CONT	IM (AMPS)	19.4	R1	.172	X1	.628
BASE SPEED	1140	S.F.	1.0	P.F. @NL/FL	.070/.871	R2	.130	X2	.569
PHASE/HERTZ	3/40	AMB °C/INSUL	40/H	WK ² (Lb-Ft ²)	3.84			XM	14.1

RATED FULL LOAD DATA

	RPM	HP	TORQUE LB-FT	FUND VOLTS	FREQ-HZ	AMPS
BASE SPEED	1147	50.0	229	460	40	63.2
MAX SPEED	1306	50.0	201	460	45.6	62.6
MIN SPEED	0	0	229	33.8	1.78	63.2

LOAD PERFORMANCE AT BASE SPEED

	RPM	HP	TORQUE LB-FT	FUND VOLTS	FREQ-HZ	AMPS
NO LOAD	1200	0	0	460	40	19.2
1/4	1189	12.5	55	460	40	24.1
1/2	1177	25.0	112	460	40	34.3
3/4	1163	37.5	169	460	40	47.5
FULL LOAD	1147	50.0	229	460	40	63.2
O/L	1102	72.1	343	460	40	101

REMARKS: TYPICAL DATA
CORRELATED DATA

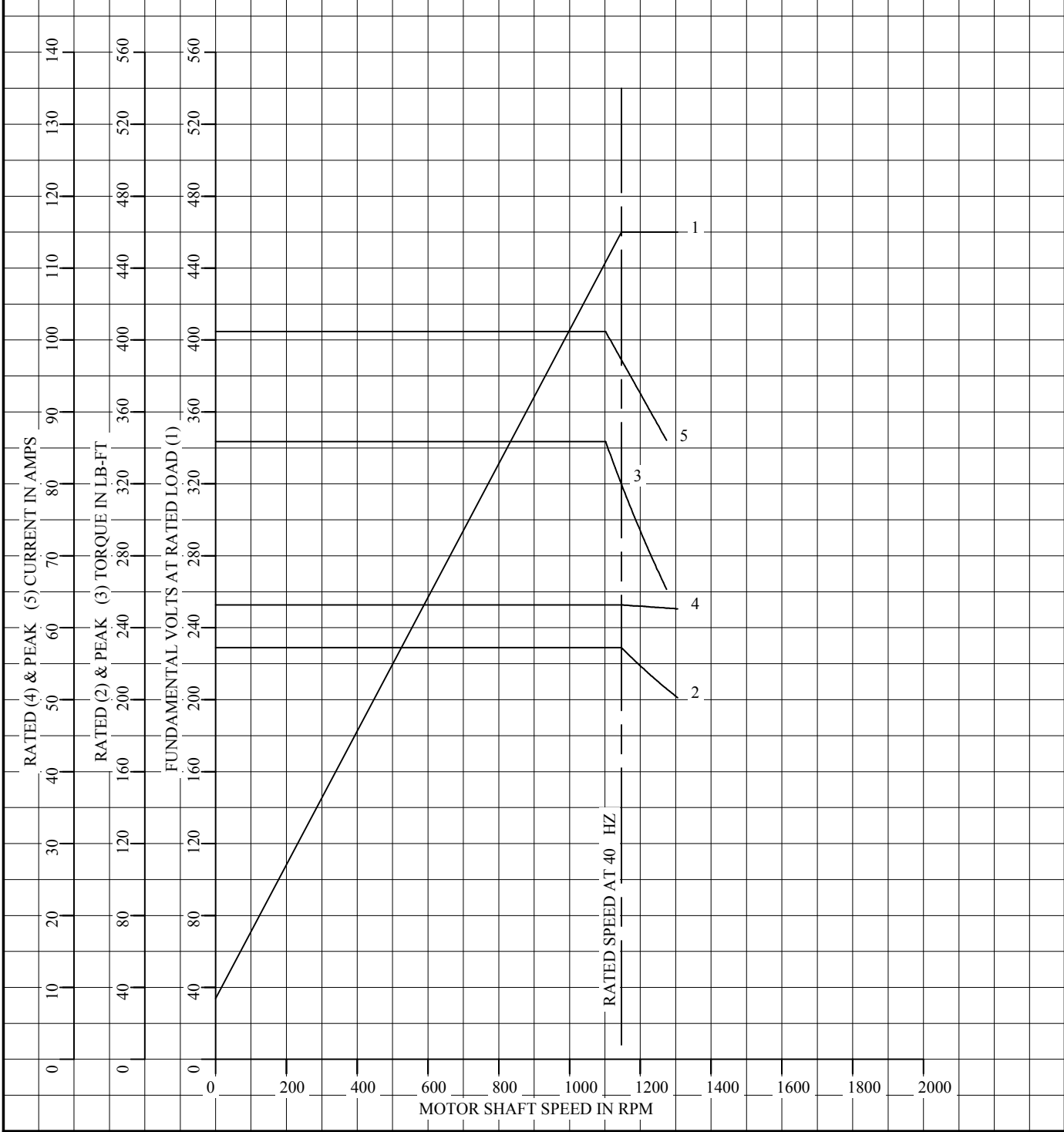


DR. BY B. GRANT
 CK. BY B. GRANT
 APP. BY T. EVON
 DATE 3-7-05

A-C MOTOR
PERFORMANCE DATA L0191A
 ISSUE DATE 3-7-05

REL S.O.	-	VOLTS	460	ENCLOSURE	DPFV	WYE CONN EQ CKT OHMS PER PHASE	
FRAME	RL2570	AMPS	63.34	MAX SAFE RPM	5000	(AT BASE RATING, 25 °C)	
HP	50	DUTY	CONT	IM (AMPS)	19.4	R1	.172 X1 .628
BASE SPEED	1140	S.F.	1.0	P.F. @NL/FL	.070/.871	R2	.130 X2 .569
PHASE/HERTZ	3/40	AMB °C/INSUL	40/H	WK ² (Lb-Ft ²)	3.84		XM 14.1

CORRELATED DATA
VARIABLE SPEED AC MOTOR CURVES



REMARKS: TYPICAL DATA
DATA VALID FOR NAMEPLATE SPEED RANGE ONLY



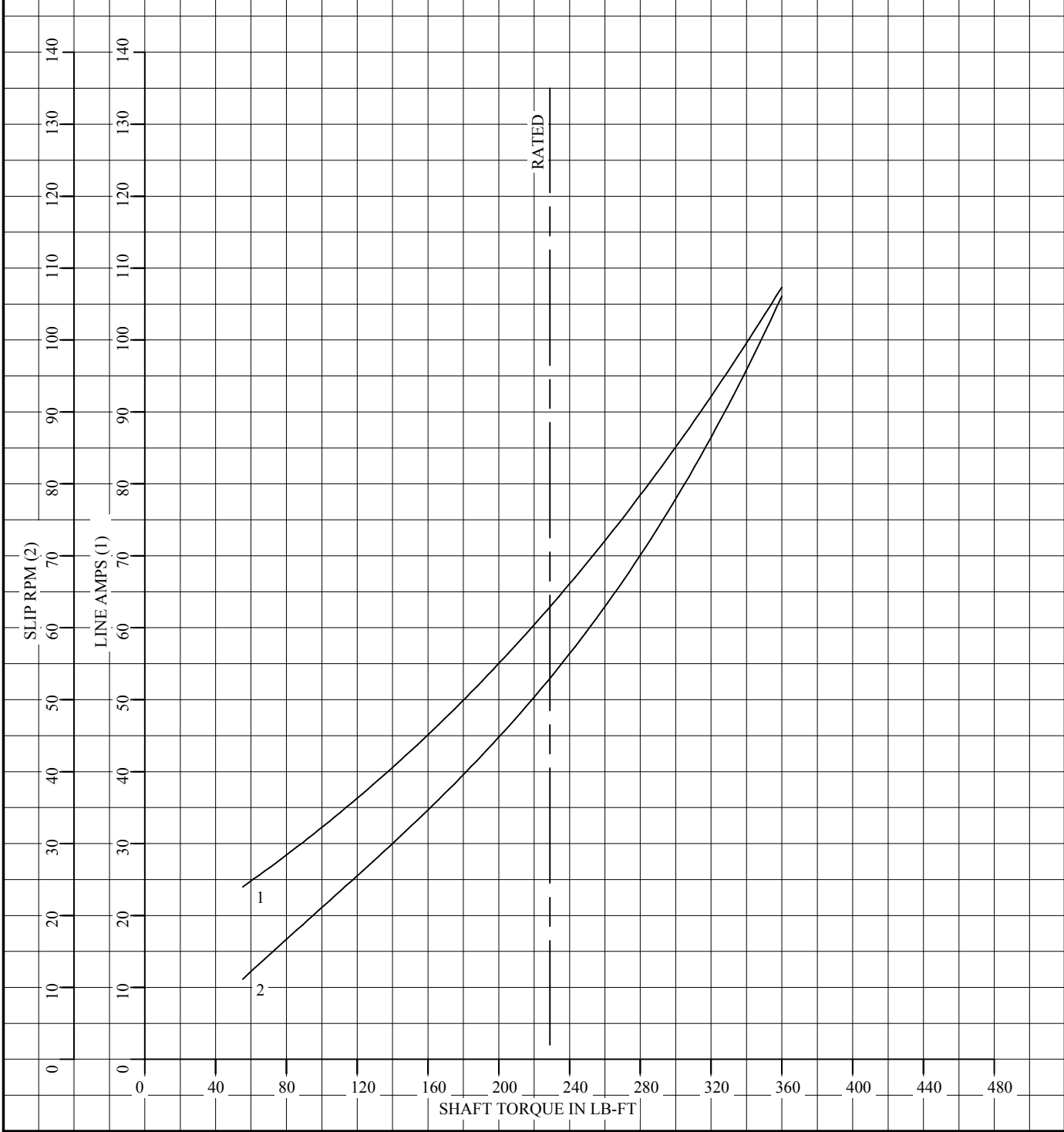
DR. BY B. GRANT
CK. BY B. GRANT
APP. BY T. EVON
DATE 3-7-05

A-C MOTOR
PERFORMANCE
CURVES

L0191A
SH 1 OF 2
ISSUE DATE 3-7-05

REL S.O.	-	VOLTS	460	ENCLOSURE	DPFV	WYE CONN EQ CKT OHMS PER PHASE	
FRAME	RL2570	AMPS	63.34	MAX SAFE RPM	5000	(AT BASE RATING, 25 °C)	
HP	50	DUTY	CONT	IM (AMPS)	19.4	R1	.172
BASE SPEED	1140	S.F.	1.0	P.F. @NL/FL	.070/.871	R2	.130
PHASE/HERTZ	3/40	AMB °C/INSUL	40/H	WK ² (Lb-Ft ²)	3.84	X1	.628
						X2	.569
						XM	14.1

CORRELATED DATA
LOAD PERFORMANCE (CONSTANT V/Hz RANGE)



REMARKS: TYPICAL DATA
DATA VALID FOR NAMEPLATE SPEED RANGE ONLY



DR. BY B. GRANT
CK. BY B. GRANT
APP. BY T. EVON
DATE 3-7-05

A-C MOTOR
PERFORMANCE
CURVES

L0191A
SH 2 OF 2
ISSUE DATE 3-7-05