

REL S.O.	-	VOLTS	460	ENCLOSURE	DPFV	WYE CONN EQ CKT OHMS PER PHASE			
FRAME	RL2882	AMPS	122.91	MAX SAFE RPM	5000	(AT BASE RATING, 25 °C)			
HP	100	DUTY	CONT	IM (AMPS)	36.86	R1	.0684	X1	.323
BASE SPEED	1160	S.F.	1.0	P.F. @NL/FL	.059/.867	R2	.0486	X2	.298
PHASE/HERTZ	3/40	AMB °C/INSUL	40/H	WK ² (Lb-Ft ²)	8.3			XM	7.38

RATED FULL LOAD DATA

	RPM	HP	TORQUE LB-FT	FUND VOLTS	FREQ-HZ	AMPS
BASE SPEED	1158	99.9	453	460	40	123
MAX SPEED	3452	40.0	61	460	116.7	48.8
MIN SPEED	0	0	453	27.9	1.391	123

LOAD PERFORMANCE AT BASE SPEED

	RPM	HP	TORQUE LB-FT	FUND VOLTS	FREQ-HZ	AMPS
NO LOAD	1200	0	0	460	40	36.4
1/4	1191	25.9	114	460	40	47.0
1/2	1181	51.7	230	460	40	68.6
3/4	1169	77.6	349	460	40	95.9
FULL LOAD	1158	99.9	453	460	40	123
O/L	1124	146	679	460	40	196

REMARKS: TYPICAL DATA
CORRELATED DATA

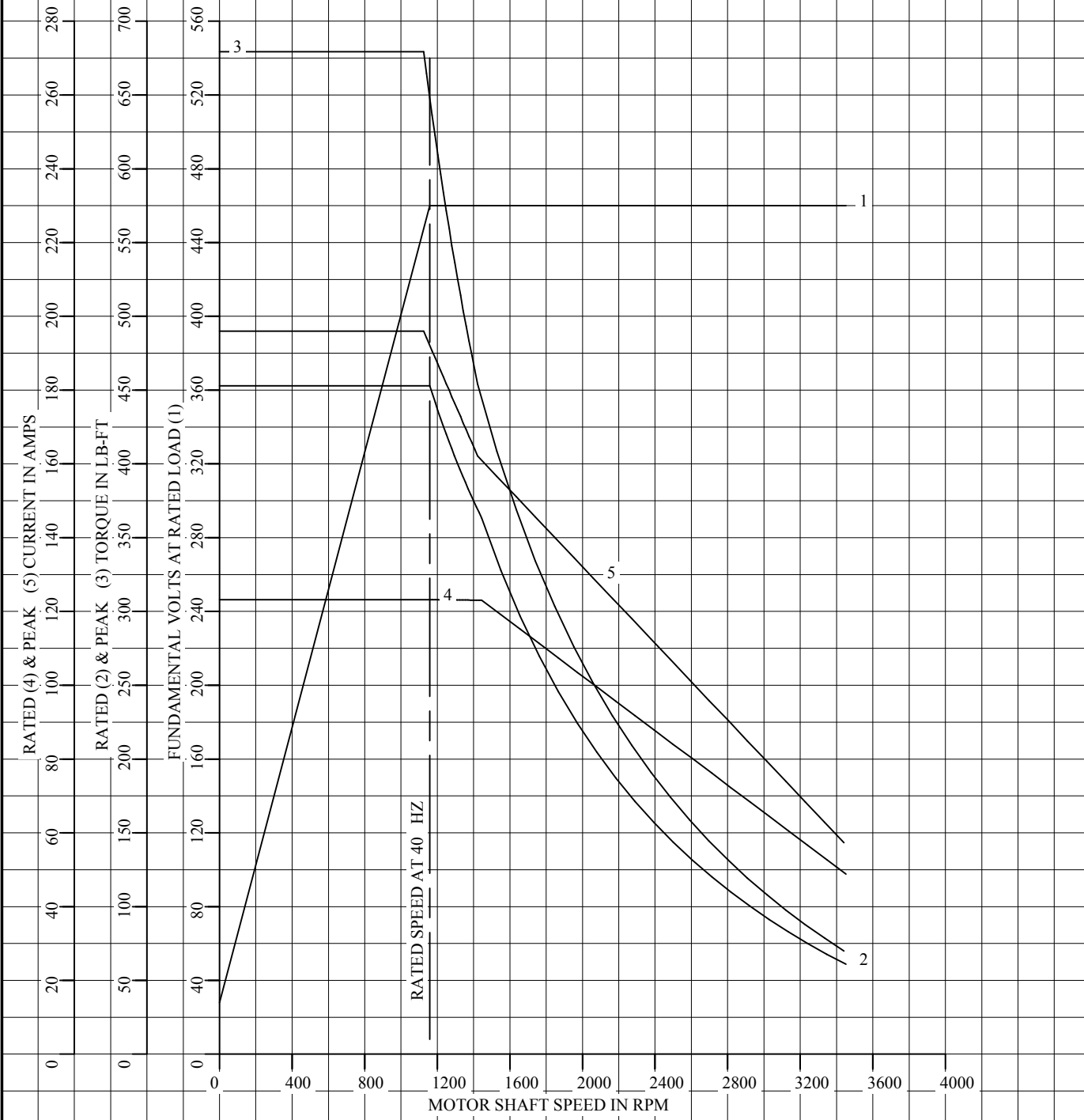


DR. BY J. MARTIN
 CK. BY J. MARTIN
 APP. BY T. EVON
 DATE 1-27-03

**A-C MOTOR
 PERFORMANCE DATA** L0337A
 ISSUE DATE 11-17-15

REL S.O.	-	VOLTS	460	ENCLOSURE	DPFV	WYE CONN EQ CKT OHMS PER PHASE	
FRAME	RL2882	AMPS	122.91	MAX SAFE RPM	5000	(AT BASE RATING, 25 °C)	
HP	100	DUTY	CONT	IM (AMPS)	36.86	R1	.0684 X1 .323
BASE SPEED	1160	S.F.	1.0	P.F. @NL/FL	.059/.867	R2	.0486 X2 .298
PHASE/HERTZ	3/40	AMB °C/INSUL	40/H	WK ² (Lb-Ft ²)	8.3		XM 7.38

CORRELATED DATA
VARIABLE SPEED AC MOTOR CURVES



REMARKS: TYPICAL DATA
DATA VALID FOR NAMEPLATE SPEED RANGE ONLY



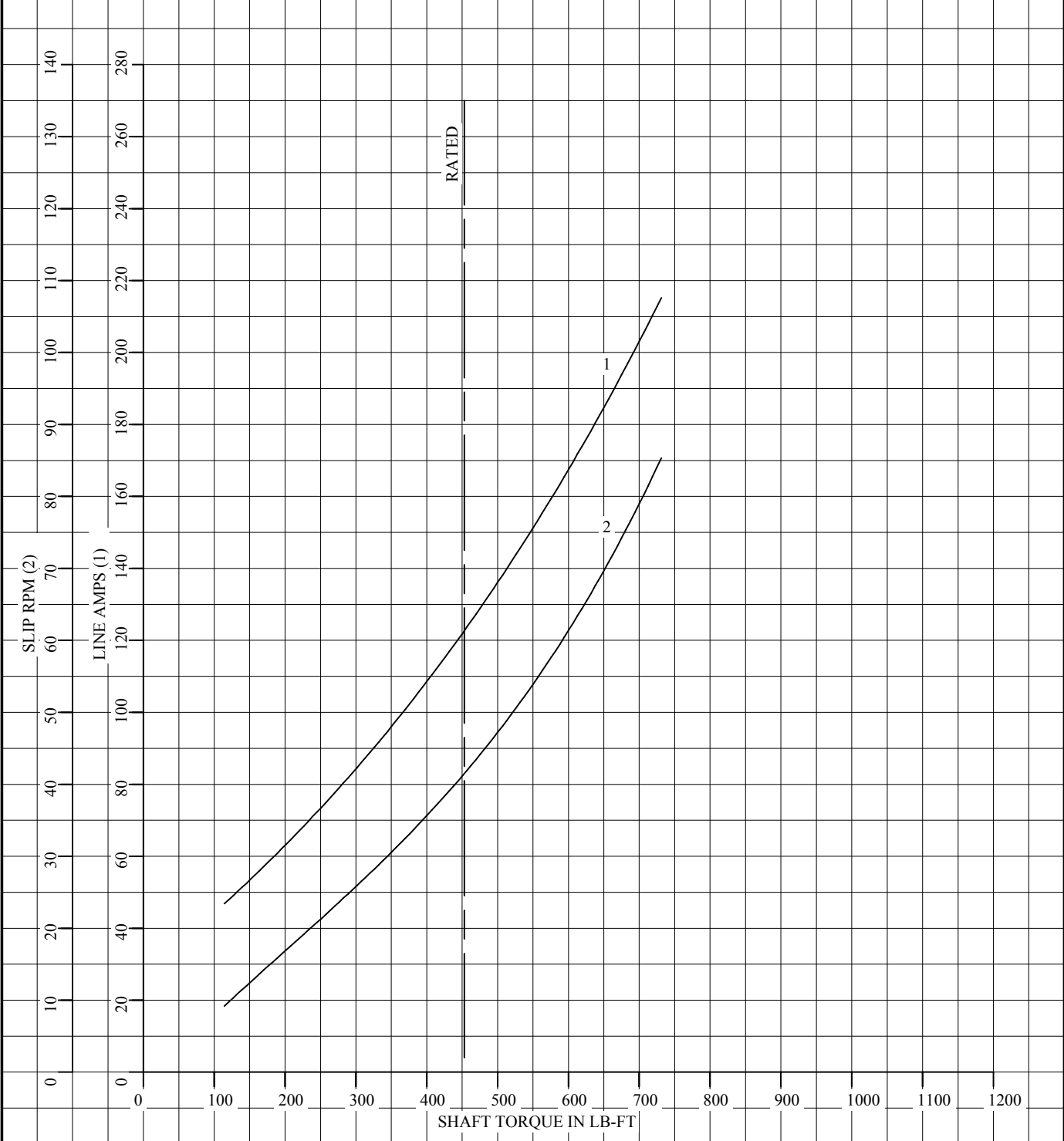
DR. BY J. MARTIN
CK. BY J. MARTIN
APP. BY T. EVON
DATE 1-27-03

A-C MOTOR
PERFORMANCE
CURVES

L0337A
SH 1 OF 2
ISSUE DATE 11-17-15

REL S.O.	-	VOLTS	460	ENCLOSURE	DPFV	WYE CONN EQ CKT OHMS PER PHASE	
FRAME	RL2882	AMPS	122.91	MAX SAFE RPM	5000	(AT BASE RATING, 25 °C)	
HP	100	DUTY	CONT	IM (AMPS)	36.86	R1 .0684	X1 .323
BASE SPEED	1160	S.F.	1.0	P.F. @NL/FL	.059/.867	R2 .0486	X2 .298
PHASE/HERTZ	3/40	AMB °C/INSUL	40/H	WK ² (Lb-Ft ²)	8.3	XM 7.38	

CORRELATED DATA
LOAD PERFORMANCE (CONSTANT V/Hz RANGE)



REMARKS: TYPICAL DATA
DATA VALID FOR NAMEPLATE SPEED RANGE ONLY



DR. BY J. MARTIN
CK. BY J. MARTIN
APP. BY T. EVON
DATE 1-27-03

A-C MOTOR
PERFORMANCE
CURVES

L0337A
SH 2 OF 2
ISSUE DATE 11-17-15