

REL S.O.	-	VOLTS	460	ENCLOSURE	DPFV	WYE CONN EQ CKT OHMS PER PHASE			
FRAME	L4034	AMPS	460	MAX SAFE RPM	3750	(AT BASE RATING, 25 °C)			
HP	400	DUTY	CONT	IM (AMPS)	130	R1	.0107	X1	.0686
BASE SPEED	1175	S.F.	1.0	P.F. @NL/FL	.043/.891	R2	.00767	X2	.0660
PHASE/HERTZ	3/40	AMB °C/INSUL	40/H	WK <sup>2</sup> (Lb-Ft <sup>2</sup> )	73			XM	2.10

### RATED FULL LOAD DATA

	RPM	HP	TORQUE LB-FT	FUND VOLTS	FREQ-HZ	AMPS
BASE SPEED	1177	400	1785	460	40	457
MAX SPEED	2002	400	1049	460	68.2	464
MIN SPEED	0	0	1785	14.8	.770	457

### LOAD PERFORMANCE AT BASE SPEED

	RPM	HP	TORQUE LB-FT	FUND VOLTS	FREQ-HZ	AMPS
NO LOAD	1200	0	0	460	40	127
1/4	1195	100	440	460	40	168
1/2	1189	200	883	460	40	250
3/4	1183	300	1331	460	40	348
FULL LOAD	1177	400	1785	460	40	457
O/L	1162	593	2678	460	40	693

REMARKS :

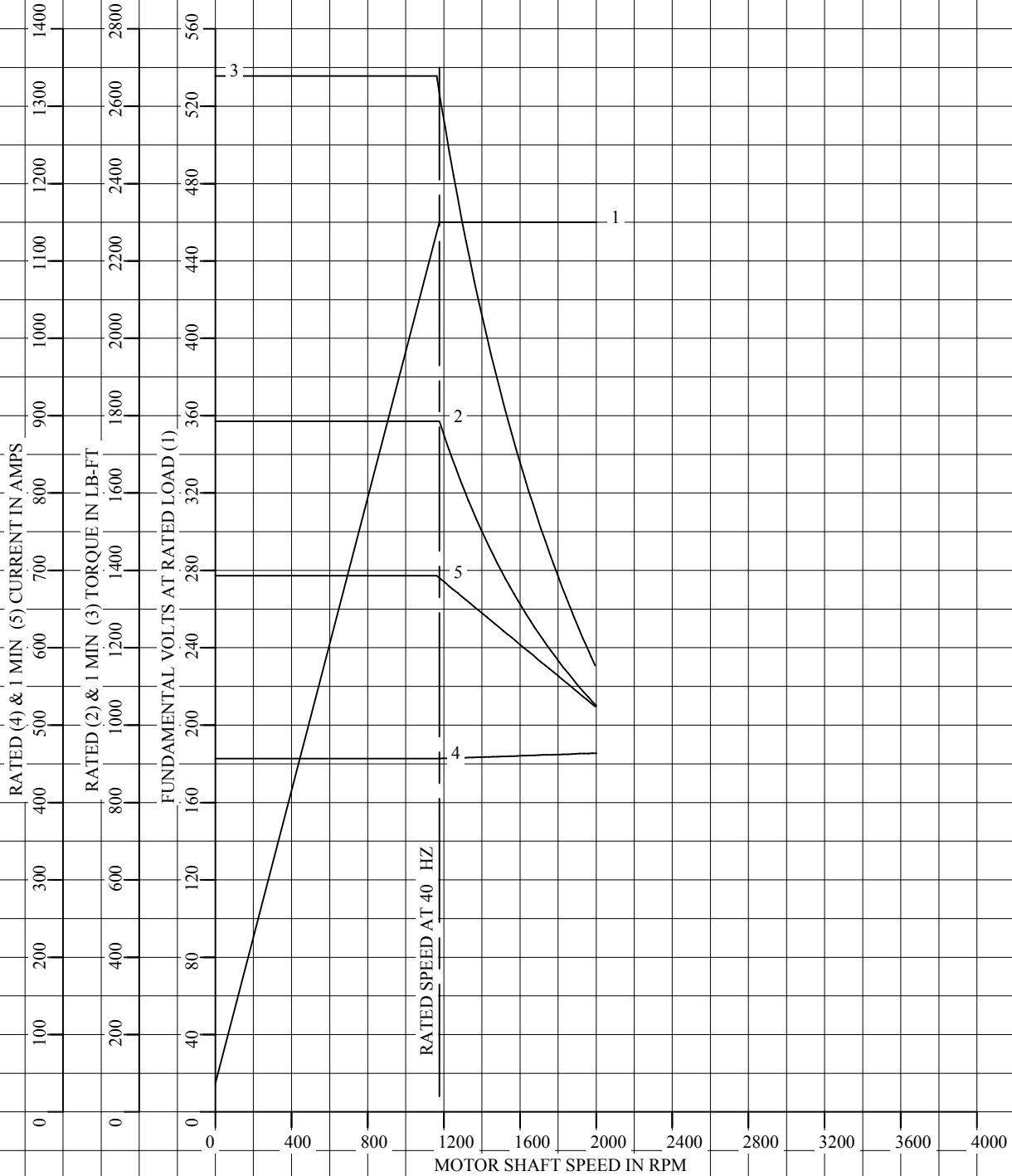


DR. BY K. GREEN  
 CK. BY B. GRANT  
 APP. BY J. MARTIN  
 DATE 7-03-14

**A-C MOTOR  
 PERFORMANCE DATA** L6220A  
 ISSUE DATE 7-03-14

REL S.O.	-	VOLTS	460	ENCLOSURE	DPFV	WYE CONN EQ CKT OHMS PER PHASE	
FRAME	L4034	AMPS	460	MAX SAFE RPM	3750	(AT BASE RATING, 25 °C)	
HP	400	DUTY	CONT	IM (AMPS)	130	R1 .0107	X1 .0686
BASE SPEED	1175	S.F.	1.0	P.F. @NL/FL	.043/.891	R2 .00767	X2 .0660
PHASE/HERTZ	3/40	AMB °C/INSUL	40/H	WK <sup>2</sup> (Lb-Ft <sup>2</sup> )	73	XM 2.10	

VARIABLE SPEED AC MOTOR CURVES



REMARKS:  
DATA VALID FOR NAMEPLATE SPEED RANGE ONLY



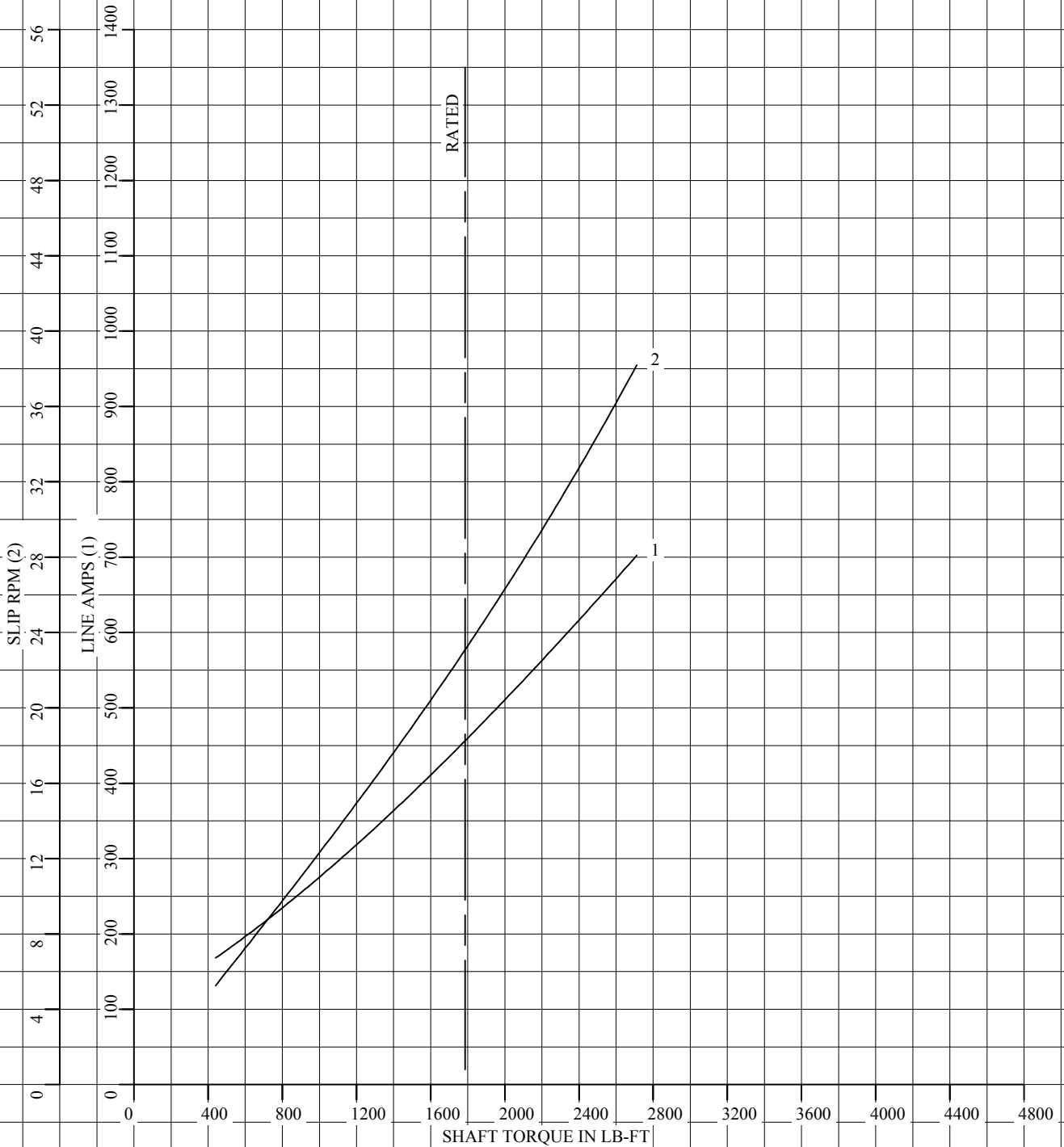
DR. BY K. GREEN  
 CK. BY B. GRANT  
 APP. BY J. MARTIN  
 DATE 7-03-14

**A-C MOTOR  
 PERFORMANCE  
 CURVES**

**L6220A**  
 SH 1 OF 2  
 ISSUE DATE 7-03-14

REL S.O.	-	VOLTS	460	ENCLOSURE	DPFV	WYE CONN EQ CKT OHMS PER PHASE	
FRAME	L4034	AMPS	460	MAX SAFE RPM	3750	(AT BASE RATING, 25 °C)	
HP	400	DUTY	CONT	IM (AMPS)	130	R1 .0107	X1 .0686
BASE SPEED	1175	S.F.	1.0	P.F. @NL/FL	.043/.891	R2 .00767	X2 .0660
PHASE/HERTZ	3/40	AMB °C/INSUL	40/H	WK <sup>2</sup> (Lb-Ft <sup>2</sup> )	73		XM 2.10

LOAD PERFORMANCE (CONSTANT V/Hz RANGE)



REMARKS: DATA VALID FOR NAMEPLATE SPEED RANGE ONLY



DR. BY K. GREEN  
 CK. BY B. GRANT  
 APP. BY J. MARTIN  
 DATE 7-03-14

**A-C MOTOR  
 PERFORMANCE  
 CURVES**

**L6220A**  
 SH 2 OF 2  
 ISSUE DATE 7-03-14