

REL S.O.	-	VOLTS	460	ENCLOSURE	DPFV	WYE CONN EQ CKT OHMS PER PHASE			
FRAME	RL4429	AMPS	870	MAX SAFE RPM	2850	(AT BASE RATING, 25 °C)			
HP	700	DUTY	CONT	IM (AMPS)	371	R1	.00212	X1	.0357
BASE SPEED	1785	S.F.	1.0	P.F. @NL/FL	.029/.798	R2	.00174	X2	.0483
PHASE/HERTZ	3/90	AMB °C/INSUL	40/H	WK ² (Lb-Ft ²)	150			XM	.711

RATED FULL LOAD DATA

	RPM	HP	TORQUE LB-FT	FUND VOLTS	FREQ-HZ	AMPS
BASE SPEED	1786	700	2058	460	90	870
MAX SPEED	2700	701	1362	460	136.1	834
MIN SPEED	0	0	0	5.60	.6888	870

LOAD PERFORMANCE AT BASE SPEED

	RPM	HP	TORQUE LB-FT	FUND VOLTS	FREQ-HZ	AMPS
NO LOAD	1800	0	0	460	90	364
1/4	1797	175	512	460	90	422
1/2	1793	351	1027	460	90	543
3/4	1790	525	1540	460	90	696
FULL LOAD	1786	700	2058	460	90	870
O/L	1778	1046	3088	460	90	1261

REMARKS :

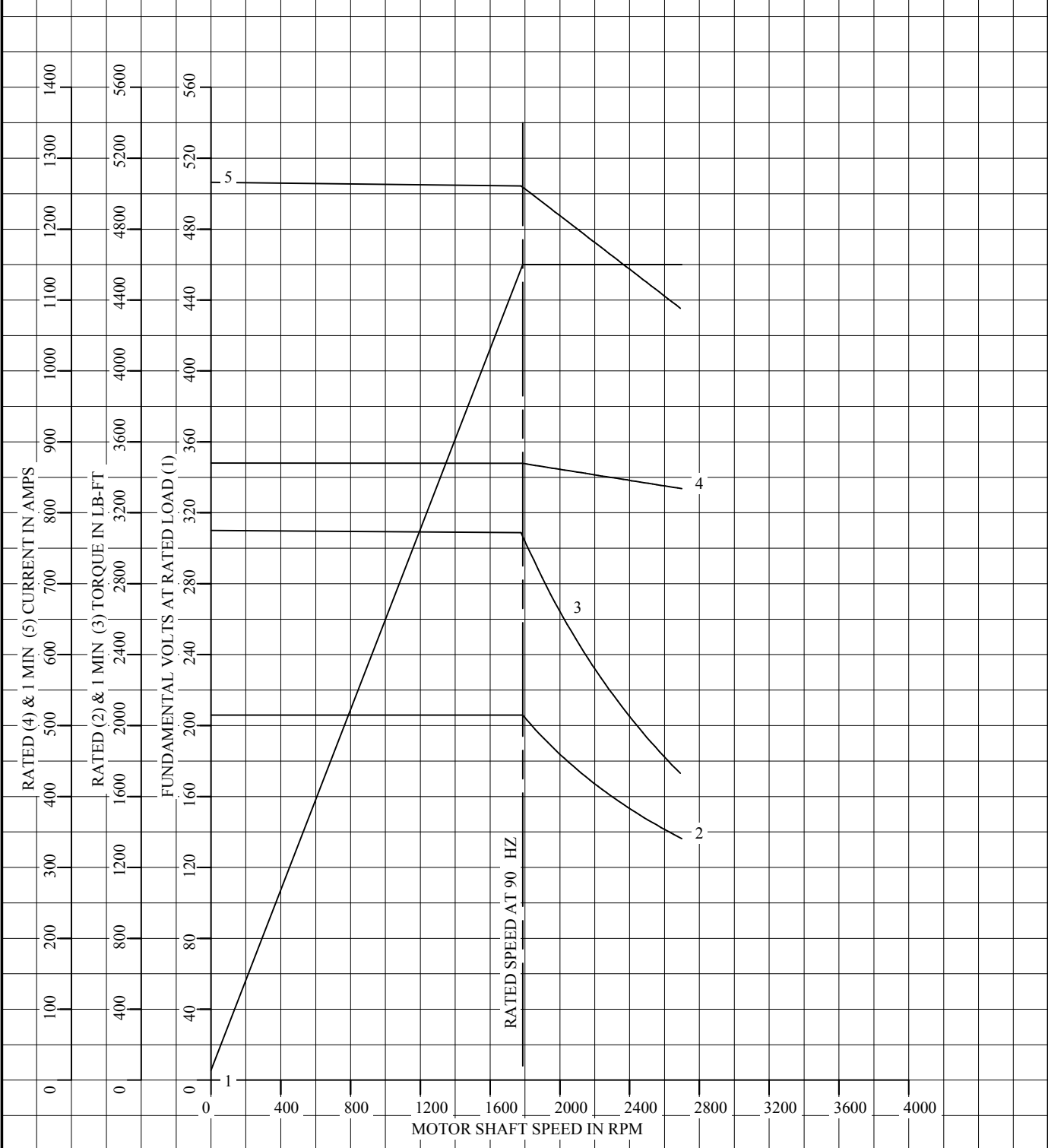


DR. BY B. GRANT
 CK. BY B. GRANT
 APP. BY T. EVON
 DATE 7-19-99

**A-C MOTOR
 PERFORMANCE DATA** L1483A
 ISSUE DATE 3-17-15

REL S.O.	-	VOLTS	460	ENCLOSURE	DPFV	WYE CONN EQ CKT OHMS PER PHASE	
FRAME	RL4429	AMPS	870	MAX SAFE RPM	2850	(AT BASE RATING, 25 °C)	
HP	700	DUTY	CONT	IM (AMPS)	371	R1	.00212 X1 .0357
BASE SPEED	1785	S.F.	1.0	P.F. @NL/FL	.029/.798	R2	.00174 X2 .0483
PHASE/HERTZ	3/90	AMB °C/INSUL	40/H	WK ² (Lb-Ft ²)	150		XM .711

VARIABLE SPEED AC MOTOR CURVES



REMARKS:
DATA VALID FOR NAMEPLATE SPEED RANGE ONLY



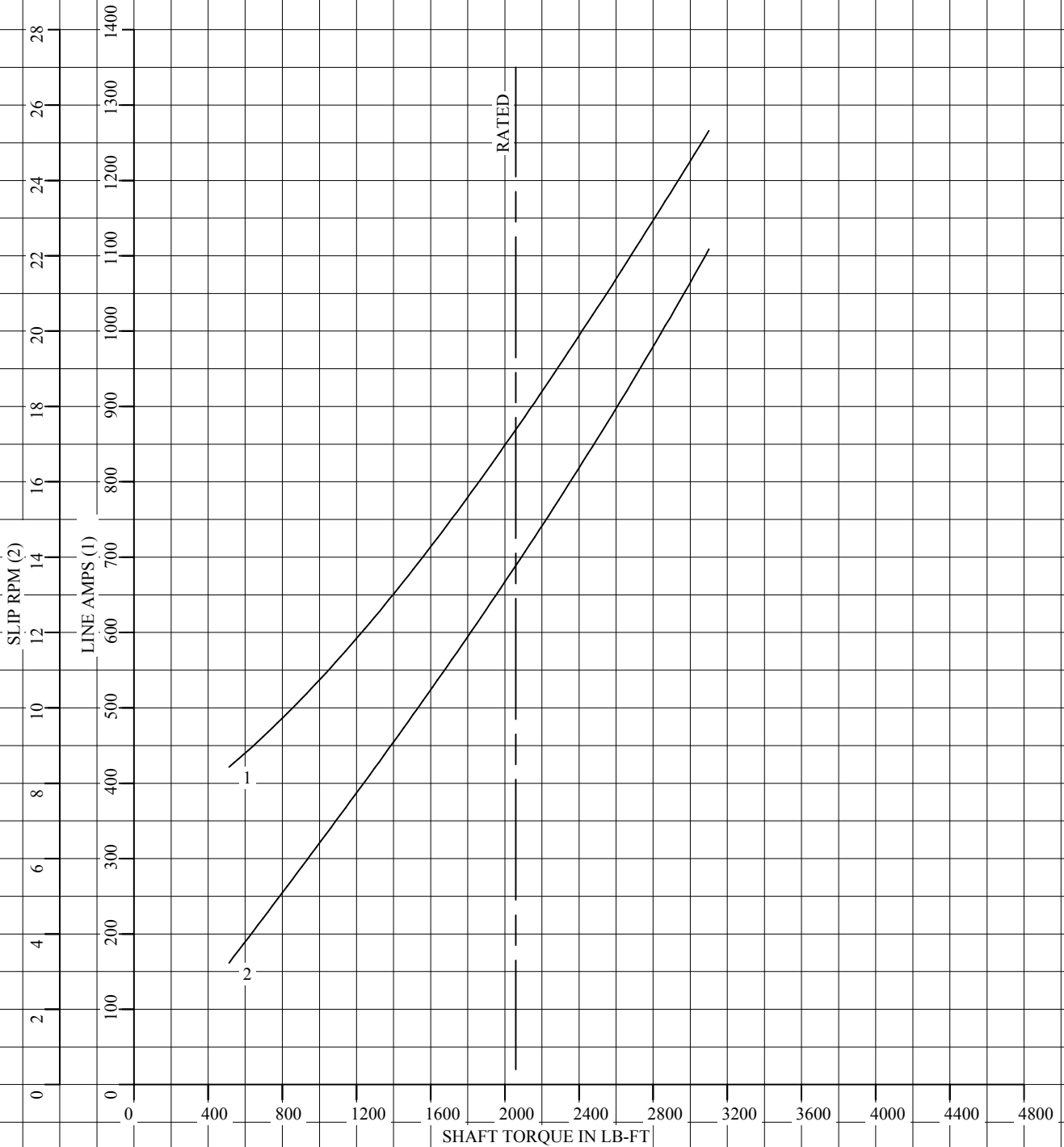
DR. BY B. GRANT
CK. BY B. GRANT
APP. BY T. EVON
DATE 7-19-99

A-C MOTOR
PERFORMANCE
CURVES

L1483A
SH 1 OF 2
ISSUE DATE 3-17-15

REL S.O.	-	VOLTS	460	ENCLOSURE	DPFV	WYE CONN EQ CKT OHMS PER PHASE	
FRAME	RL4429	AMPS	870	MAX SAFE RPM	2850	(AT BASE RATING, 25 °C)	
HP	700	DUTY	CONT	IM (AMPS)	371	R1 .00212	X1 .0357
BASE SPEED	1785	S.F.	1.0	P.F. @NL/FL	.029/.798	R2 .00174	X2 .0483
PHASE/HERTZ	3/90	AMB °C/INSUL	40/H	WK ² (Lb-Ft ²)	150		XM .711

LOAD PERFORMANCE (CONSTANT V/Hz RANGE)



REMARKS: DATA VALID FOR NAMEPLATE SPEED RANGE ONLY



DR. BY B. GRANT
 CK. BY B. GRANT
 APP. BY T. EVON
 DATE 7-19-99

**A-C MOTOR
 PERFORMANCE
 CURVES**

L1483A
 SH 2 OF 2
 ISSUE DATE 3-17-15