

REL S.O.	-	VOLTS	460	ENCLOSURE	TEFC	WYE CONN EQ CKT OHMS PER PHASE	
FRAME	FL2162	AMPS	20	MAX SAFE RPM	5000	(AT BASE RATING, 25 °C)	
HP	15	DUTY	CONT	IM (AMPS)	11	R1 .250	X1 1.04
BASE SPEED	1775	S.F.	1.0	P.F.@NL/FL	.071/.781	R2 .149	X2 1.47
PHASE/HERTZ	3/60	AMB °C/INSUL	40/H	WK ² (Lb-Ft ²)	1.92		XM 24.4

RATED FULL LOAD DATA

	RPM	HP	TORQUE LB-FT	FUND VOLTS	FREQ-HZ	AMPS
BASE SPEED	1776	15.0	44	460	60	20.1
MAX SPEED	3548	15.0	22	460	120	18.4
MIN SPEED	0	0	44	14.4	.797	20.1

LOAD PERFORMANCE AT BASE SPEED

	RPM	HP	TORQUE LB-FT	FUND VOLTS	FREQ-HZ	AMPS
NO LOAD	1800	0	0	460	60	10.6
1/4	1794	3.75	11	460	60	11.7
1/2	1788	7.50	22	460	60	13.7
3/4	1782	11.3	33	460	60	16.7
FULL LOAD	1776	15.0	44	460	60	20.1
O/L	1748	29.5	89	460	60	36.2

**BLOWER
DATA**

VOLTS	PH/HZ	FL AMPS	LR AMPS	FRAME	CFM

REMARKS: TYPICAL DATA
CORRELATED DATA



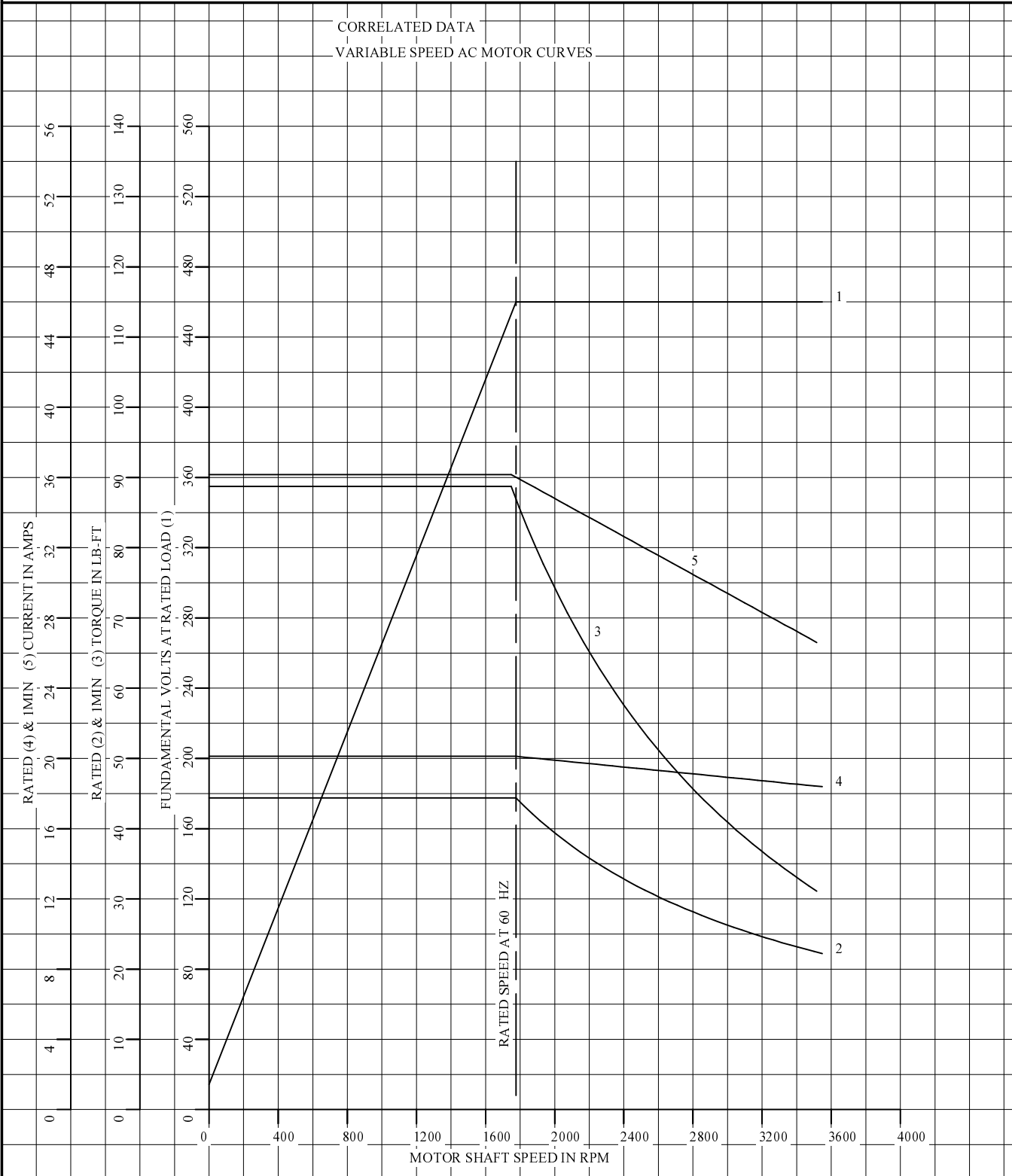
DR. BY B. GRANT
 CK. BY B. GRANT
 APP. BY T. CUFR
 DATE 6-6-06

**A-C MOTOR
 PERFORMANCE L3307A
 DATA**

ISSUE DATE 6-6-06

REL S.O.	-	VOLTS	460	ENCLOSURE	TEFC	WYE CONN EQ CKT OHMS PER PHASE	
FRAME	FL2162	AMPS	20	MAX SAFE RPM	5000	(AT BASE RATING, 25 °C)	
HP	15	DUTY	CONT	IM (AMPS)	11	R1 .250	X1 1.04
BASE SPEED	1775	S.F.	1.0	P.F.@NL/FL	.071/.781	R2 .149	X2 1.47
PHASE/HERTZ	3/60	AMB °C/INSUL	40/H	WK ² (Lb-Ft ²)	1.92	XM 24.4	

CORRELATED DATA
VARIABLE SPEED AC MOTOR CURVES



REMARKS: TYPICAL DATA
DATA VALID FOR NAMEPLATE SPEED RANGE ONLY



DR. BY B. GRANT
CK. BY B. GRANT
APP. BY T. CUFR
DATE 6-6-06

A-C MOTOR
PERFORMANCE
CURVES

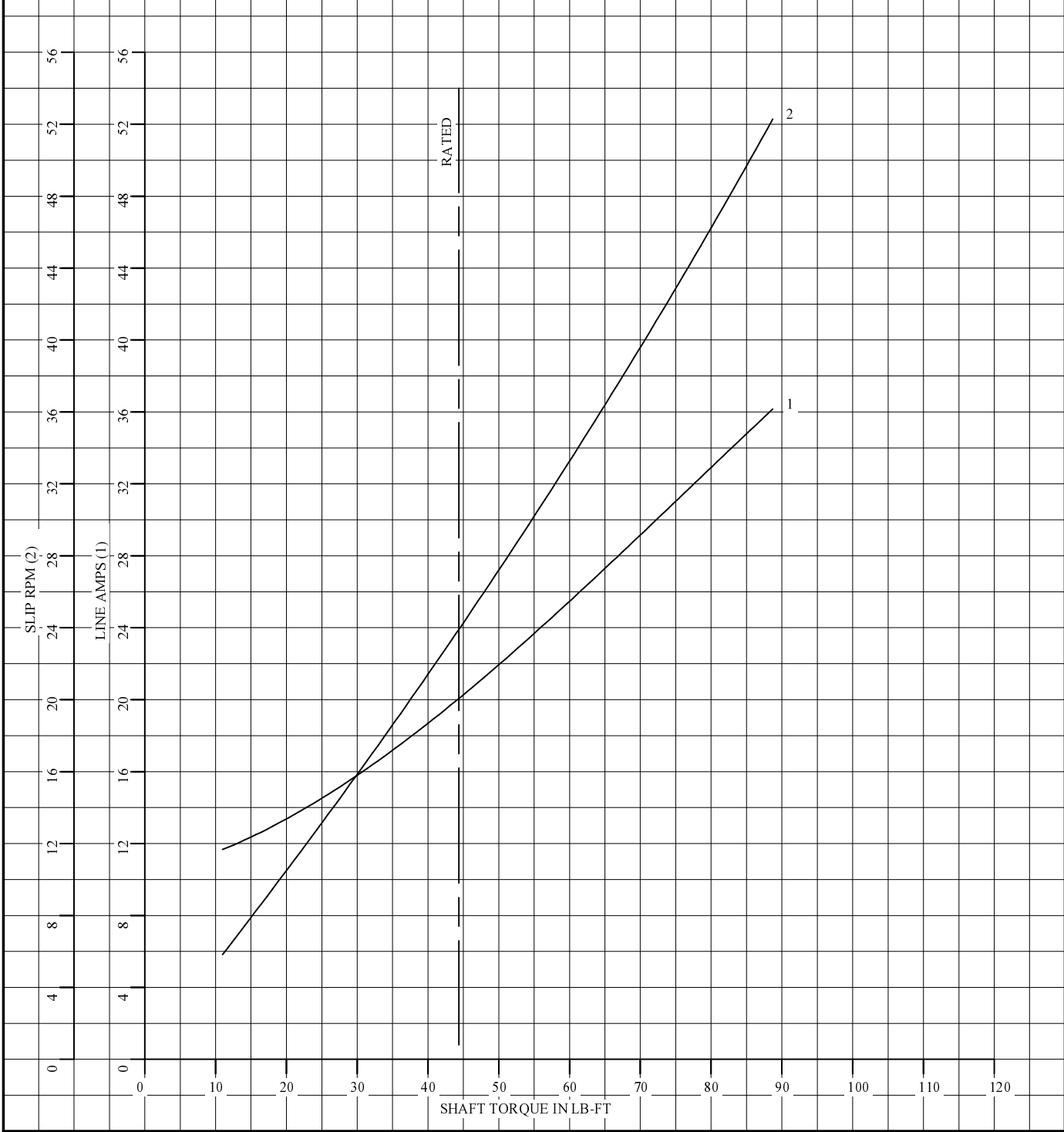
L3307A

SH 1 OF 2

ISSUE DATE 6-6-06

REL S.O.	-	VOLTS	460	ENCLOSURE	TEFC	WYE CONN EQ CKT OHMS PER PHASE	
FRAME	FL2162	AMPS	20	MAX SAFE RPM	5000	(AT BASE RATING, 25 °C)	
HP	15	DUTY	CONT	IM (AMPS)	11	R1	.250 X1 1.04
BASE SPEED	1775	S.F.	1.0	P.F.@NL/FL	.071/.781	R2	.149 X2 1.47
PHASE/HERTZ	3/60	AMB °C/INSUL	40/H	WK ² (Lb-Ft ²)	1.92	XM 24.4	

CORRELATED DATA
LOAD PERFORMANCE (CONSTANT V/HZ RANGE)



REMARKS: TYPICAL DATA
DATA VALID FOR NAMEPLATE SPEED RANGE ONLY



DR. BY B. GRANT
CK. BY B. GRANT
APP. BY T. CUFR
DATE 6-6-06

**A-C MOTOR
PERFORMANCE
CURVES**

L3307A
SH 2 OF 2
ISSUE DATE 6-6-06