

REL S.O.	-	VOLTS	460	ENCLOSURE	TEFC	WYE CONN EQ CKT OHMS PER PHASE			
FRAME	449T	AMPS	277	MAX SAFE RPM	3600	(AT BASE RATING, 25 °C)			
HP	250	DUTY	CONT	IM (AMPS)	83.3	R1	.00598	X1	.0788
BASE SPEED	1790	S.F.	1.00	P.F. @NL/FL	.061/.881	R2	.00435	X2	.0795
PHASE/HERTZ	3/60	AMB °C/INSUL	40/F	WK <sup>2</sup> (Lb-Ft <sup>2</sup> )	84.1			XM	2.72

**RATED FULL LOAD DATA**

	RPM	HP	TORQUE LB-FT	FUND VOLTS	FREQ-HZ	AMPS
BASE SPEED	1790	250	733	460	60	277
MAX SPEED	2684	250	489	460	90	272
MIN SPEED	0	0	733	5.90	.332	277

**LOAD PERFORMANCE AT BASE SPEED**

	RPM	HP	TORQUE LB-FT	FUND VOLTS	FREQ-HZ	AMPS
NO LOAD	1800	0	0	460	60	83.3
1/4	1798	62.5	183	460	60	117
1/2	1795	125	366	460	60	163
3/4	1793	187	549	460	60	217
FULL LOAD	1790	250	733	460	60	277
O/L	1778	497	1467	460	60	543

**BLOWER  
DATA**

VOLTS	PH/HZ	FL AMPS	LR AMPS	FRAME	CFM

REMARKS: TYPICAL DATA  
VECTOR PWM INVERTER DUTY

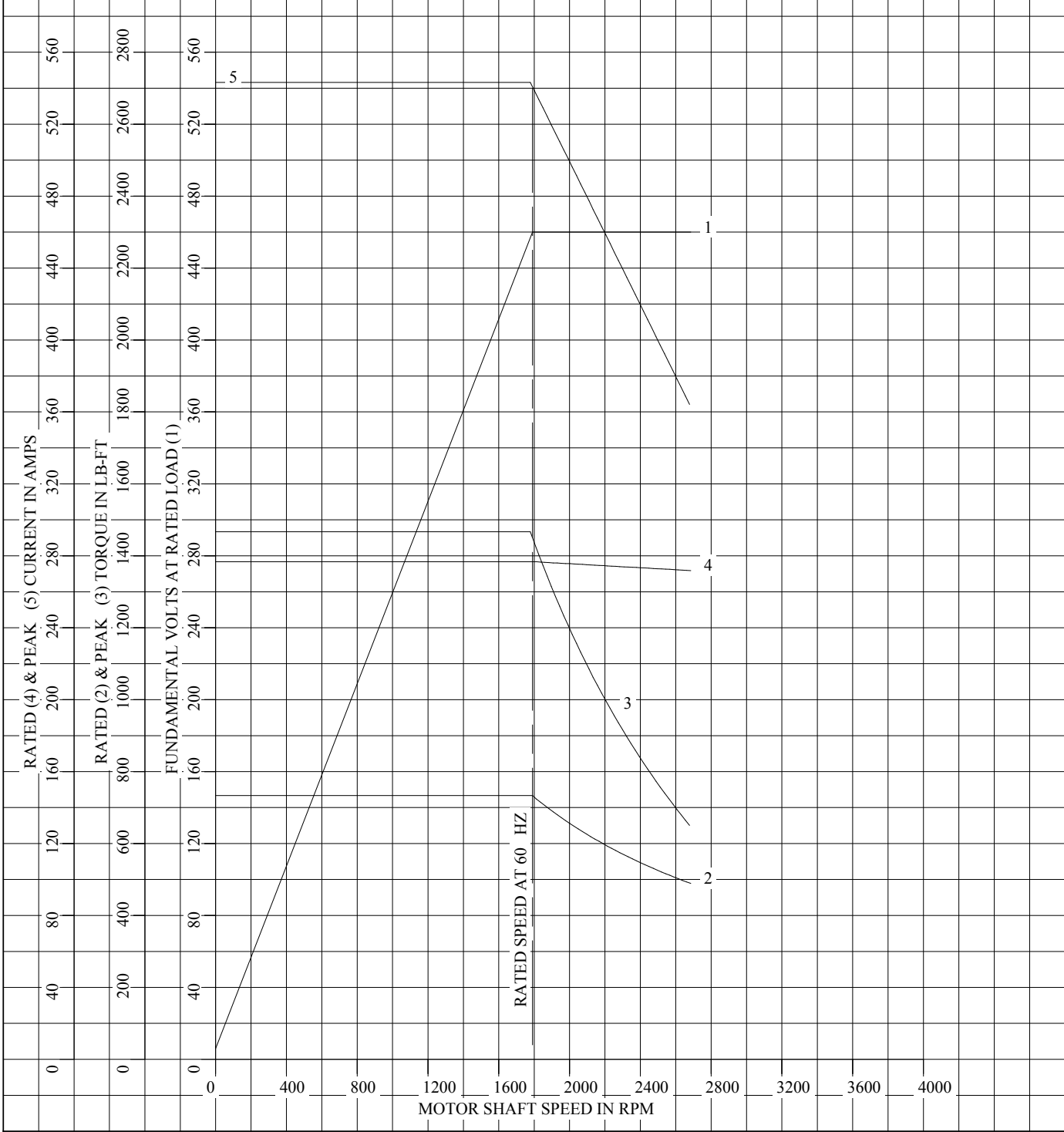


DR. BY W. L. SMITH  
 CK. BY J. J. HARRISON  
 APP. BY D. M. BYRD  
 DATE 04/23/04

**A-C MOTOR  
PERFORMANCE DATA**      **A44WG0225-R001**  
 ISSUE DATE      12/16/10

REL S.O.	-	VOLTS	460	ENCLOSURE	TEFC	WYE CONN EQ CKT OHMS PER PHASE	
FRAME	449T	AMPS	277	MAX SAFE RPM	3600	(AT BASE RATING, 25 °C)	
HP	250	DUTY	CONT	IM (AMPS)	83.3	R1	.00598 X1 .0788
BASE SPEED	1790	S.F.	1.00	P.F. @NL/FL	.061/.881	R2	.00435 X2 .0795
PHASE/HERTZ	3/60	AMB °C/INSUL	40/F	WK <sup>2</sup> (Lb-Ft <sup>2</sup> )	84.1		XM 2.72

VECTOR PWM INVERTER DUTY  
VARIABLE SPEED AC MOTOR CURVES



REMARKS: TYPICAL DATA  
DATA VALID FOR NAMEPLATE SPEED RANGE ONLY

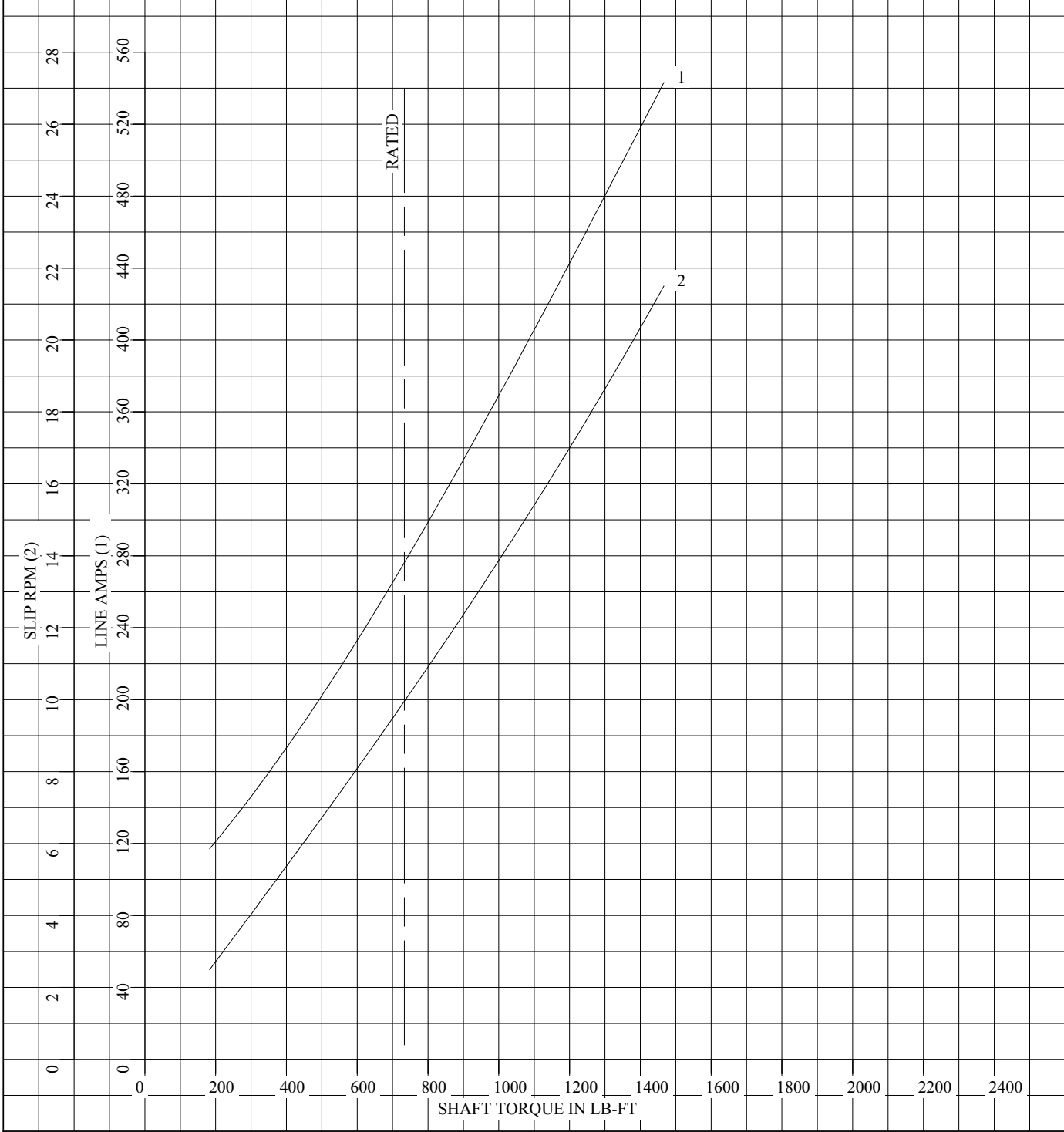


DR. BY W. L. SMITH  
CK. BY J.J.HARRISON  
APP. BY D. M. BYRD  
DATE 04/23/04

**A-C MOTOR PERFORMANCE CURVES**  
A44WG0225-R001  
SH 1 OF 2  
ISSUE DATE 12/16/10

REL S.O.	-	VOLTS	460	ENCLOSURE	TEFC	WYE CONN EQ CKT OHMS PER PHASE	
FRAME	449T	AMPS	277	MAX SAFE RPM	3600	(AT BASE RATING, 25 °C)	
HP	250	DUTY	CONT	IM (AMPS)	83.3	R1	.00598 X1 .0788
BASE SPEED	1790	S.F.	1.00	P.F. @NL/FL	.061/.881	R2	.00435 X2 .0795
PHASE/HERTZ	3/60	AMB °C/INSUL	40/F	WK <sup>2</sup> (Lb-Ft <sup>2</sup> )	84.1		XM 2.72

VECTOR PWM INVERTER DUTY  
LOAD PERFORMANCE (CONSTANT V/HZ RANGE)



REMARKS: TYPICAL DATA  
DATA VALID FOR NAMEPLATE SPEED RANGE ONLY



DR. BY W. L. SMITH  
CK. BY J.J.HARRISON  
APP. BY D. M. BYRD  
DATE 04/23/04

**A-C MOTOR PERFORMANCE CURVES**  
A44WG0225-R001  
SH 2 OF 2  
ISSUE DATE 12/16/10