



AC Induction Motor Performance Data

Record # 39007

Typical performance - not guaranteed values

Winding: 36WGS952	Type: 3640M	Enclosure: TENV
--------------------------	--------------------	------------------------

Nameplate Data				General Characteristics at 460 V, 60 Hz: High Volt Connection	
Rated Output (HP)	3			Full Load Torque	9.1 LB-FT
Volts	208-230/460			Start Configuration	DOL
Full Load Amps	8.6-8.2/4.1			Break Down Torque	35 LB-FT
R.P.M.	1760			Pull-Up Torque	18.8 LB-FT
Hz	60	Phase	3	Locked-rotor Torque	22.7 LB-FT
NEMA Design Code	B	KVA Code	K	Starting Current	32.9 Amps
Service Factor	1			No-load Current	2.09 Amps
NEMA Nom. Eff.	89.5	P.F.	78	Line-line Res. @ 25°C.	3.3157 Ohms
Rating - Duty	40C AMB-CONT			Temp. Rise @ Rated Load	74°C
S.F. Amps				Temp. Rise @ S.F. Load	

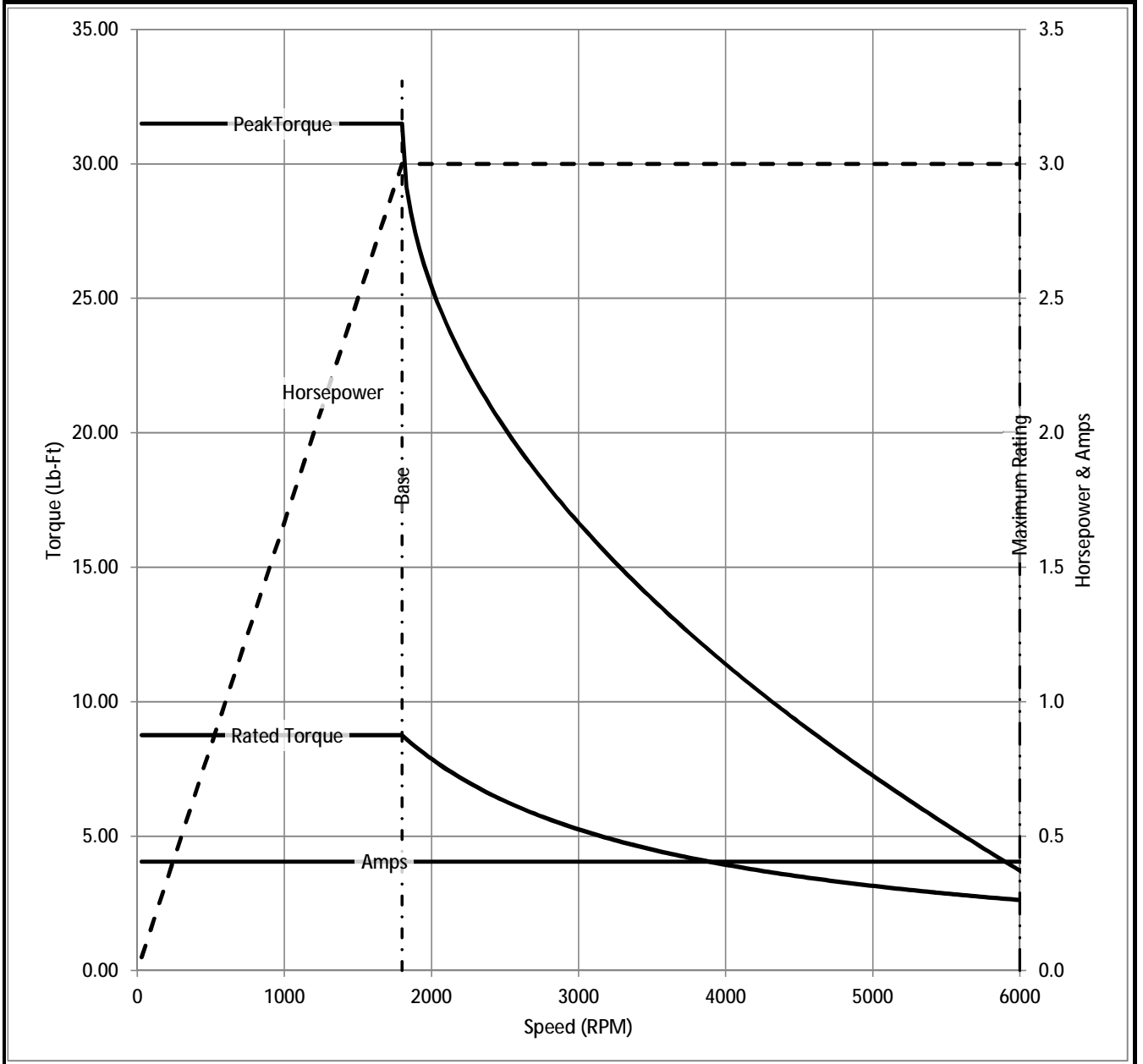
Load Characteristics at 460 Volts, 60 Hz, 3 HP

% of Rated Load	25	50	75	100	125	150	S.F.
Power Factor	38	60	71	78	82	84	
Efficiency	83.8	89.3	90.4	90.3	89.6	88.5	
Speed	1790.1	1780.3	1769.9	1758.7	1746.6	1732.6	
Line Amperes	2.29	2.72	3.34	4.05	4.86	5.75	

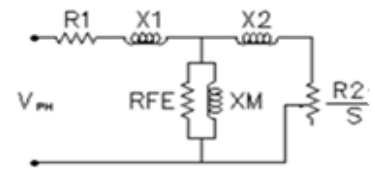
Baldor Electric Company Fort Smith, Arkansas

BALDOR • RELIANCE®

Catalog	IDWNM3611T	NP VOLTS	230/460	ENCLOSURE	TENV	WYE CONN EQ CKT OHMS PER PHASE (BASE RATING, 20C)			
FRAME	184TC	NP AMPS	8.2/4.1	Base Volts	460	R1	1.640	X1	5.143
HP	3 HP	DUTY	Cont	Base AMPS	4.05	R2	1.260	X2	4.486
BASE SPEED	1800	MAX SAFE RPM	6000	Slip Hz	1.37			XM	120.167
PHASE/HZ	3/60	AMB ⁰ C/INSUL	40/H	WK ² (lb-ft ²)	0.372				



Remarks: Calculated Data



 BALDOR A MEMBER OF THE ABB GROUP	DR BY	<u>ENR</u>	36J565S952G1
	CK BY		
	APP BY	<u>ENR</u>	A-C MOTOR
	DATE	<u>3/6/2013</u>	PERFORMANCE CURVES
			ISSUE DATE
			3/6/2013