


REL. S.O.	FRAME	HP	TYPE	PHASE/ HERTZ	RPM	VOLTS
	447TS	200	P	3/60	3571	460
AMPS	DUTY	AMB °C/ INSUL.	S.F.	NEMA DESIGN	CODE LETTER	ENCL.
213	CONT	40/F	1.15	B	G	TEFC
E/S	ROTOR	TEST S.O.	TEST DATE	STATOR RES. @25 °C OHMS (BETWEEN LINES)		
833199	418143005AE	---	---	.0144		
<b>PERFORMANCE</b>						
LOAD	HP	AMPERES	RPM	% POWER FACTOR	% EFFICIENCY	
NO LOAD	0	46.4	3600	5.92	0	
1/4	50.0	78.6	3593	63.5	93.9	
2/4	100	118	3586	82.6	96.0	
3/4	150	164	3578	88.7	96.3	
4/4	200	213	3571	91.1	96.2	
5/4	250	265	3562	92.0	95.9	
<b>SPEED TORQUE</b>						
		RPM	TORQUE % FULL LOAD	TORQUE LB.-FT.	AMPERES	
LOCKED ROTOR		0	151	444	1446	
PULL UP		288	124	363	1331	
BREAKDOWN		3462	281	825	730	
FULL LOAD		3571	100	294	213	
<p>AMPERES SHOWN FOR 460. VOLT CONNECTION. IF OTHER VOLTAGE CONNECTIONS ARE AVAILABLE, THE AMPERES WILL VARY INVERSELY WITH THE RATED VOLTAGE</p> <p>REMARKS: TYPICAL DATA</p>						
		DR. BY	W. L. SMITH		<b>A-C MOTOR PERFORMANCE A44WG1504-R004 DATA</b> ISSUE DATE 12/21/20	
		CK. BY	J. J. HARRISON			
APP. BY	E. J. CHRISTIAN					
DATE	08/04/10					

REL S.O.

FRAME 447TS

HP 200

TYPE P

PHASE/HERTZ 3/60

RPM 3571

VOLTS 460

AMPS 213

DUTY CONT

AMB °C/INSUL 40/F

S.F. 1.15

NEMA DESIGN B

CODE LETTER G

ENCLOSURE TEFC

E/S 833199

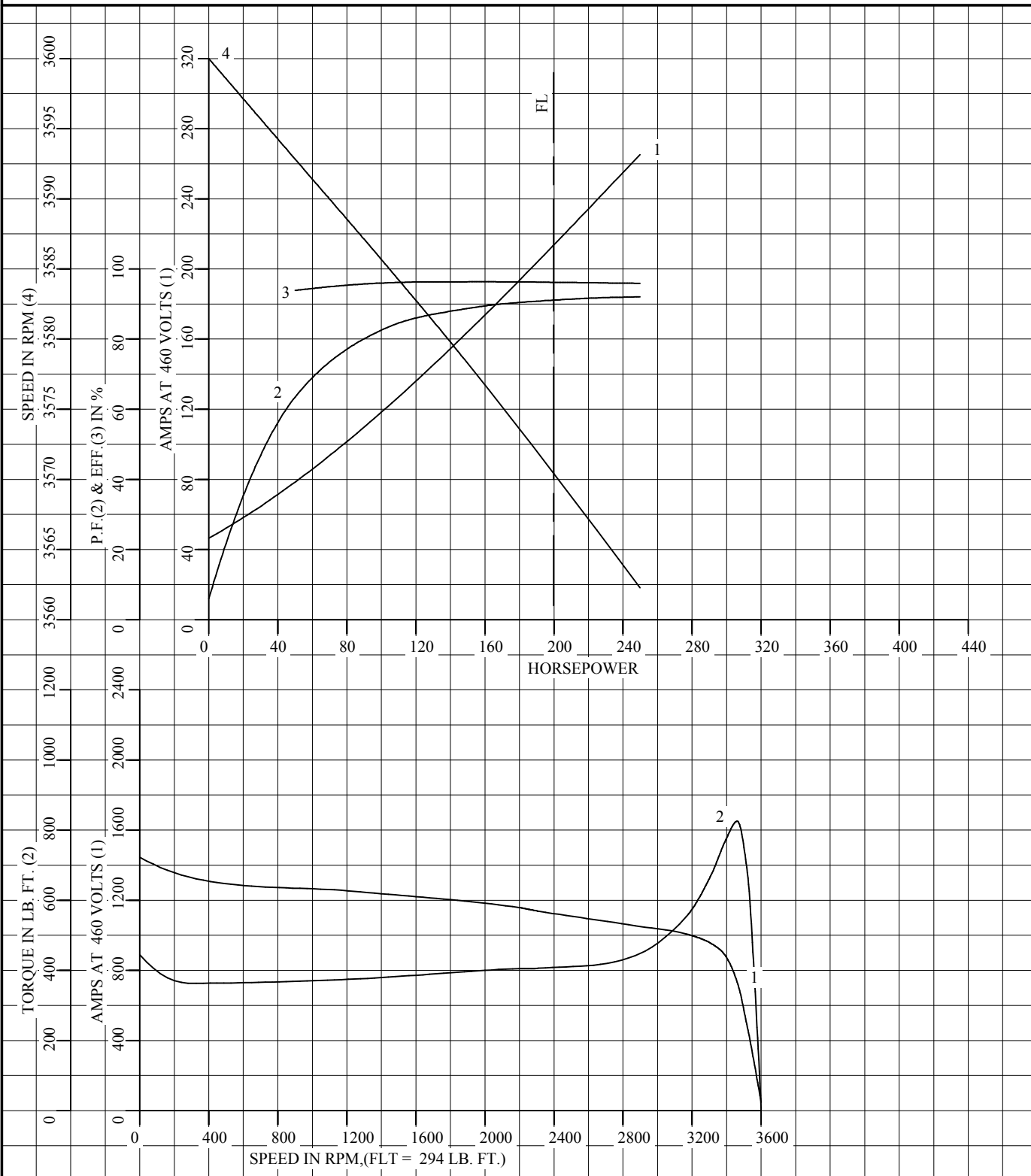
ROTOR 418143005AE

TEST S.O. TYPICAL DATA

TEST DATE ---

STATOR RES. @ 25 °C .0144

OHMS (BETWEEN LINES)



AMPERES SHOWN FOR 460 VOLT CONNECTION, IF OTHER VOLTAGE CONNECTIONS ARE AVAILABLE, THE AMPERES WILL VARY INVERSELY WITH THE RATED VOLTAGE.



DR. BY W. L. SMITH  
 CK. BY J. J. HARRISON  
 APP. BY E. J. CHRISTIAN  
 DATE 08/04/10

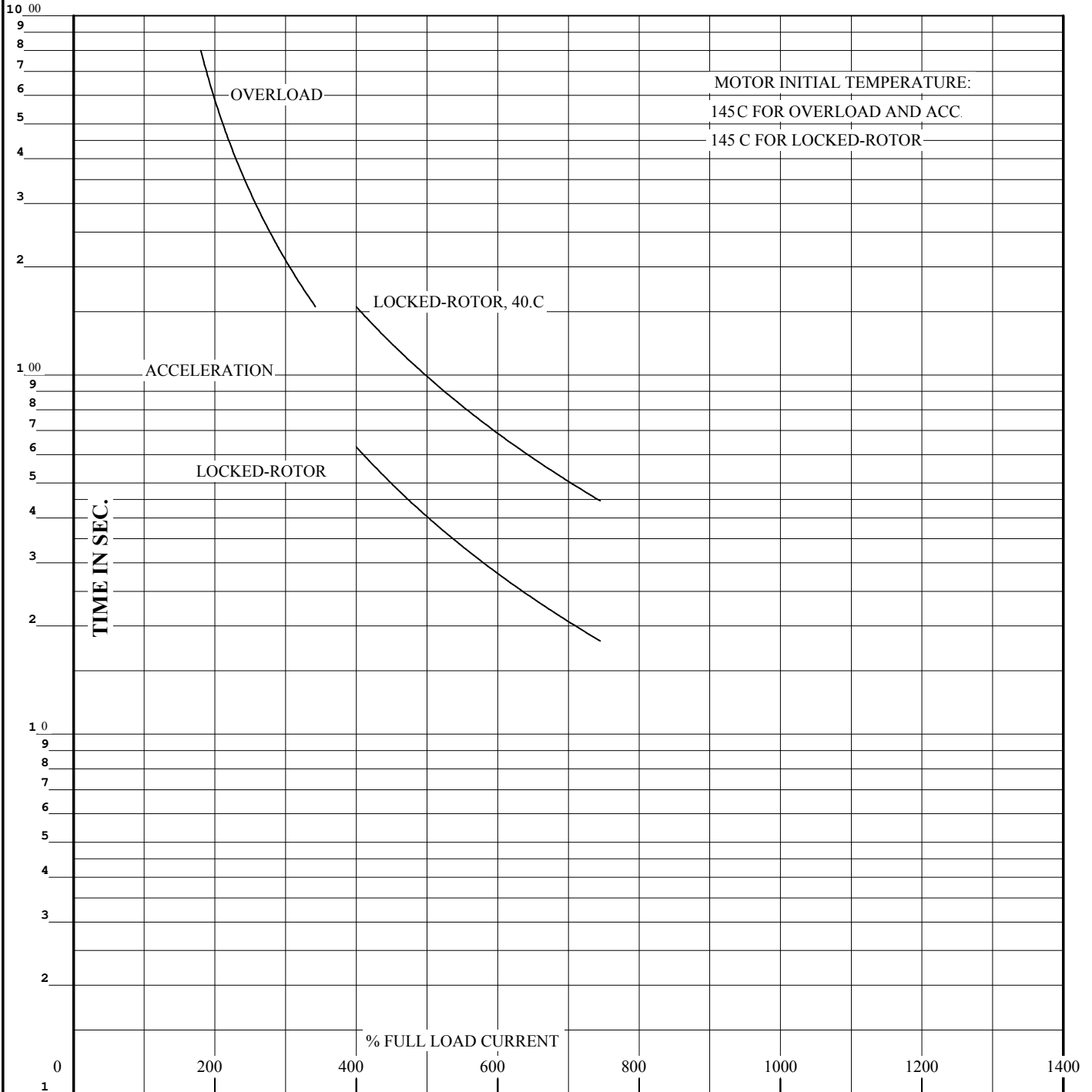
**A-C MOTOR PERFORMANCE CURVES**  
**A44WG1504-R004**  
 ISSUE DATE 12/21/20

REL. S.O.  
 FRAME 447TS  
 HP 200  
 TYPE P  
 PHASE/HERTZ 3/60

RPM 3571  
 VOLTS 460  
 AMPS 213  
 DUTY CONT  
 AMB °C/INSUL 40/F

S.F. 1.15  
 NEMA DESIGN B  
 CODE LETTER G  
 ENCLOSURE TEFC  
 E/S 833199

ROTOR 418143005AE  
 TEST S.O. TYPICAL DATA  
 TEST DATE ---  
 STATOR RES. @ 25 °C .0144  
 OHMS (BETWEEN LINES)



THERMAL LIMIT CURVE

REMARKS:

AMPERES SHOWN FOR 460 VOLT CONNECTION, IF OTHER VOLTAGE CONNECTIONS ARE AVAILABLE, THE AMPERES WILL VARY INVERSELY WITH THE RATED VOLTAGE.



DR. BY W. L. SMITH  
 CK. BY J.J.HARRISON  
 APP. BY E.J.CHRISTIAN  
 DATE 08/04/10

**A-C MOTOR PERFORMANCE CURVES**  
 A44WG1504-R004  
 ISSUE DATE 12/21/20