


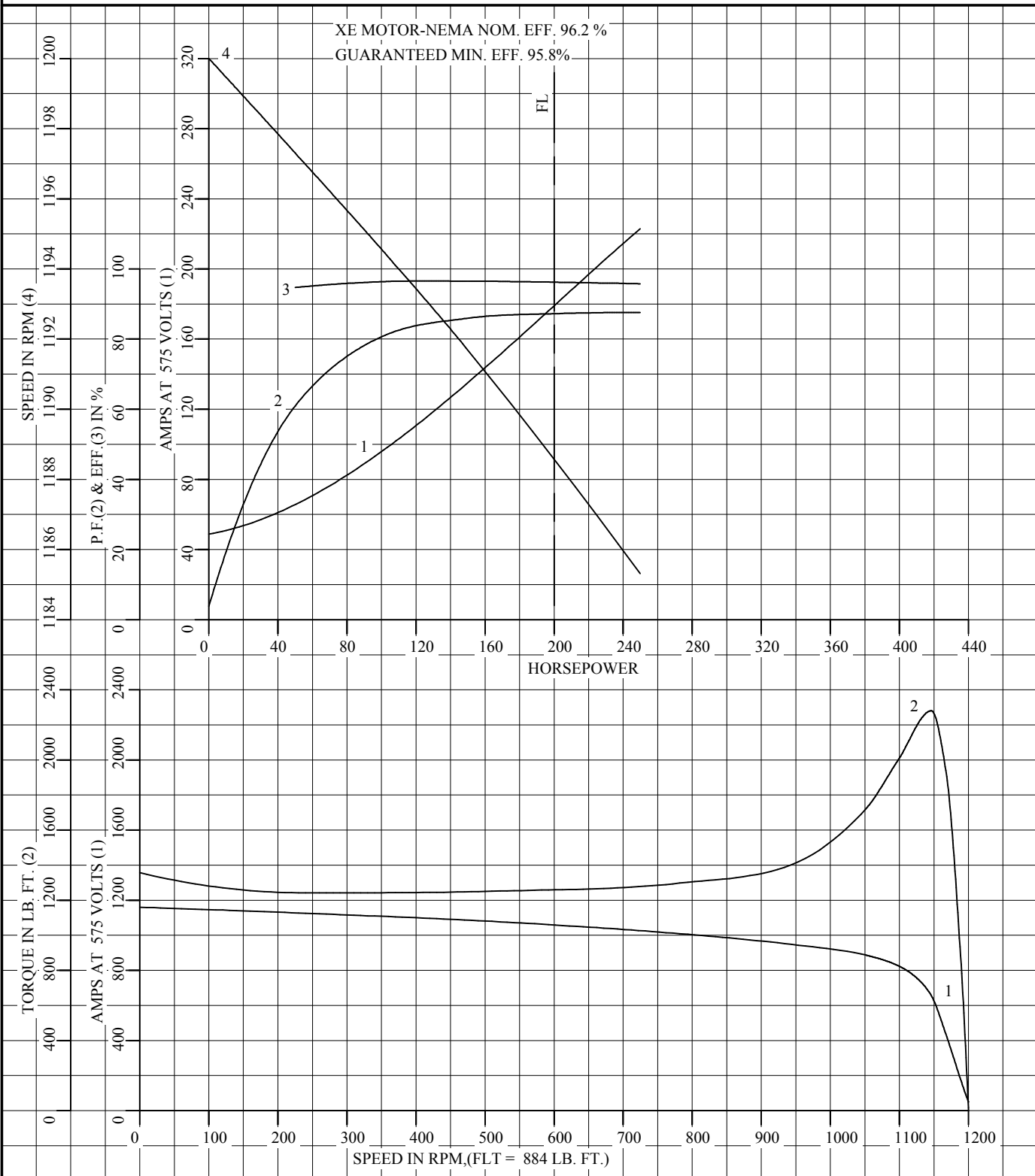
REL. S.O.	FRAME	HP	TYPE	PHASE/ HERTZ	RPM	VOLTS		
	449T	200	P	3/60	1190	575		
AMPS	DUTY	AMB °C/ INSUL.	S.F.	NEMA DESIGN	CODE LETTER	ENCL.		
178	CONT	40/F	1.15	B	G	TEFC		
E/S	ROTOR	TEST S.O.	TEST DATE	STATOR RES. @25 °C OHMS (BETWEEN LINES)				
401689	418143-83RE	---	---	.0320				
PERFORMANCE								
LOAD	HP	AMPERES	RPM	% POWER FACTOR	% EFFICIENCY			
NO LOAD	0	49.0	1200	3.79	0			
1/4	50.1	64.9	1197	61.0	94.7			
2/4	100	96.3	1195	80.6	96.4			
3/4	150	135	1192	85.9	96.5			
4/4	200	178	1189	87.3	96.2			
5/4	250	223	1185	87.5	95.8			
SPEED TORQUE								
		RPM	TORQUE % FULL LOAD	TORQUE LB.-FT.	AMPERES			
LOCKED ROTOR		0	154	1357	1160			
PULL UP		240	141	1242	1126			
BREAKDOWN		1146	258	2280	655			
FULL LOAD		1189	100	884	178			
<p>AMPERES SHOWN FOR 575. VOLT CONNECTION. IF OTHER VOLTAGE CONNECTIONS ARE AVAILABLE, THE AMPERES WILL VARY INVERSELY WITH THE RATED VOLTAGE</p> <p>REMARKS: TYPICAL DATA XE MOTOR-NEMA NOM. EFF. 96.2 % GUARANTEED MIN. EFF. 95.8%</p>								
		DR. BY	J. P. MCGILL		A-C MOTOR PERFORMANCE A44WG2216-R001 DATA			
		CK. BY	K. W. KANOUFF				ISSUE DATE	06/03/16
		APP. BY	K. W. KANOUFF					
		DATE	05/20/92					

REL S.O.
 FRAME 449T
 HP 200
 TYPE P
 PHASE/HERTZ 3/60

RPM 1190
 VOLTS 575
 AMPS 178
 DUTY CONT
 AMB °C/INSUL 40/F

S.F. 1.15
 NEMA DESIGN B
 CODE LETTER G
 ENCLOSURE TEFC
 E/S 401689

ROTOR 418143-83RE
 TEST S.O. TYPICAL DATA
 TEST DATE ---
 STATOR RES. @ 25 °C .0320
 OHMS (BETWEEN LINES)



AMPERES SHOWN FOR 575 VOLT CONNECTION, IF OTHER VOLTAGE CONNECTIONS ARE AVAILABLE, THE AMPERES WILL VARY INVERSELY WITH THE RATED VOLTAGE.



DR. BY J. P. MCGILL
 CK. BY K. W. KANOUFF
 APP. BY K. W. KANOUFF
 DATE 05/20/92

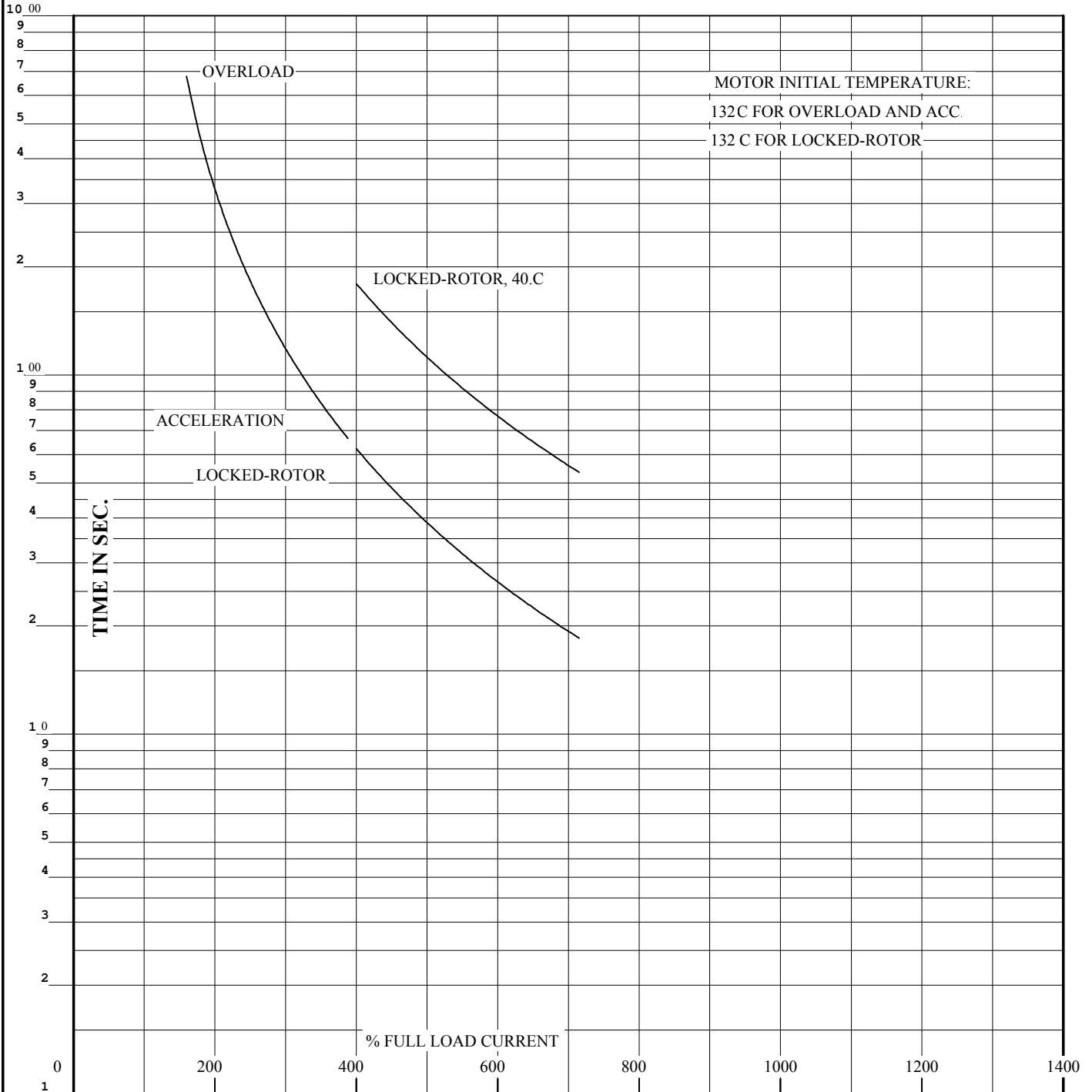
A-C MOTOR
 PERFORMANCE A44WG2216-R001
 CURVES ISSUE DATE 06/03/16

REL. S.O.
 FRAME 449T
 HP 200
 TYPE P
 PHASE/HERTZ 3/60

RPM 1190
 VOLTS 575
 AMPS 178
 DUTY CONT
 AMB °C/INSUL 40/F

S.F. 1.15
 NEMA DESIGN B
 CODE LETTER G
 ENCLOSURE TEFC
 E/S 401689

ROTOR 418143-83RE
 TEST S.O. TYPICAL DATA
 TEST DATE ---
 STATOR RES. @ 25 °C. 0.0320
 OHMS (BETWEEN LINES)



THERMAL LIMIT CURVE

REMARKS: XE MOTOR-NEMA NOM. EFF. 96.2 %
 GUARANTEED MIN. EFF. 95.8%

AMPERES SHOWN FOR 575 VOLT CONNECTION, IF OTHER VOLTAGE CONNECTIONS ARE AVAILABLE, THE AMPERES WILL VARY INVERSELY WITH THE RATED VOLTAGE.



DR. BY J. P. MCGILL
 CK. BY K. W. KANOUFF
 APP. BY K. W. KANOUFF
 DATE 05/20/92

A-C MOTOR PERFORMANCE CURVES
 A44WG2216-R001
 ISSUE DATE 06/03/16