

REL S.O.	-	VOLTS	460	ENCLOSURE	TEBC	WYE CONN EQ CKT OHMS PER PHASE	
FRAME	FL2570	AMPS	65	MAX SAFE RPM	5000	(AT BASE RATING, 25 °C)	
HP	50	DUTY	CONT	IM (AMPS)	34	R1	.0778 X1 .380
BASE SPEED	1775	S.F.	1.0	P.F.@NL/FL	.049/.795	R2	.0486 X2 .480
PHASE/HERTZ	3/60	AMB °C/INSUL	40/H	WK <sup>2</sup> (Lb-Ft <sup>2</sup> )	3.84		XM 8.13

**RATED FULL LOAD DATA**

	RPM	HP	TORQUE LB-FT	FUND VOLTS	FREQ-HZ	AMPS
BASE SPEED	1774	50.0	148	460	60	65.1
MAX SPEED	3542	50.0	74	460	120	59.8
MIN SPEED	0	0	148	14.6	.875	65.1

**LOAD PERFORMANCE AT BASE SPEED**

	RPM	HP	TORQUE LB-FT	FUND VOLTS	FREQ-HZ	AMPS
NO LOAD	1800	0	0	460	60	33.0
1/4	1794	12.5	37	460	60	36.0
1/2	1787	25.0	74	460	60	43.4
3/4	1781	37.5	111	460	60	53.4
FULL LOAD	1774	50.0	148	460	60	65.1
O/L	1741	98.1	296	460	60	122

BLOWER DATA	VOLTS	PH/HZ	FL AMPS	LR AMPS	FRAME	CFM

REMARKS: TYPICAL DATA  
CORRELATED DATA

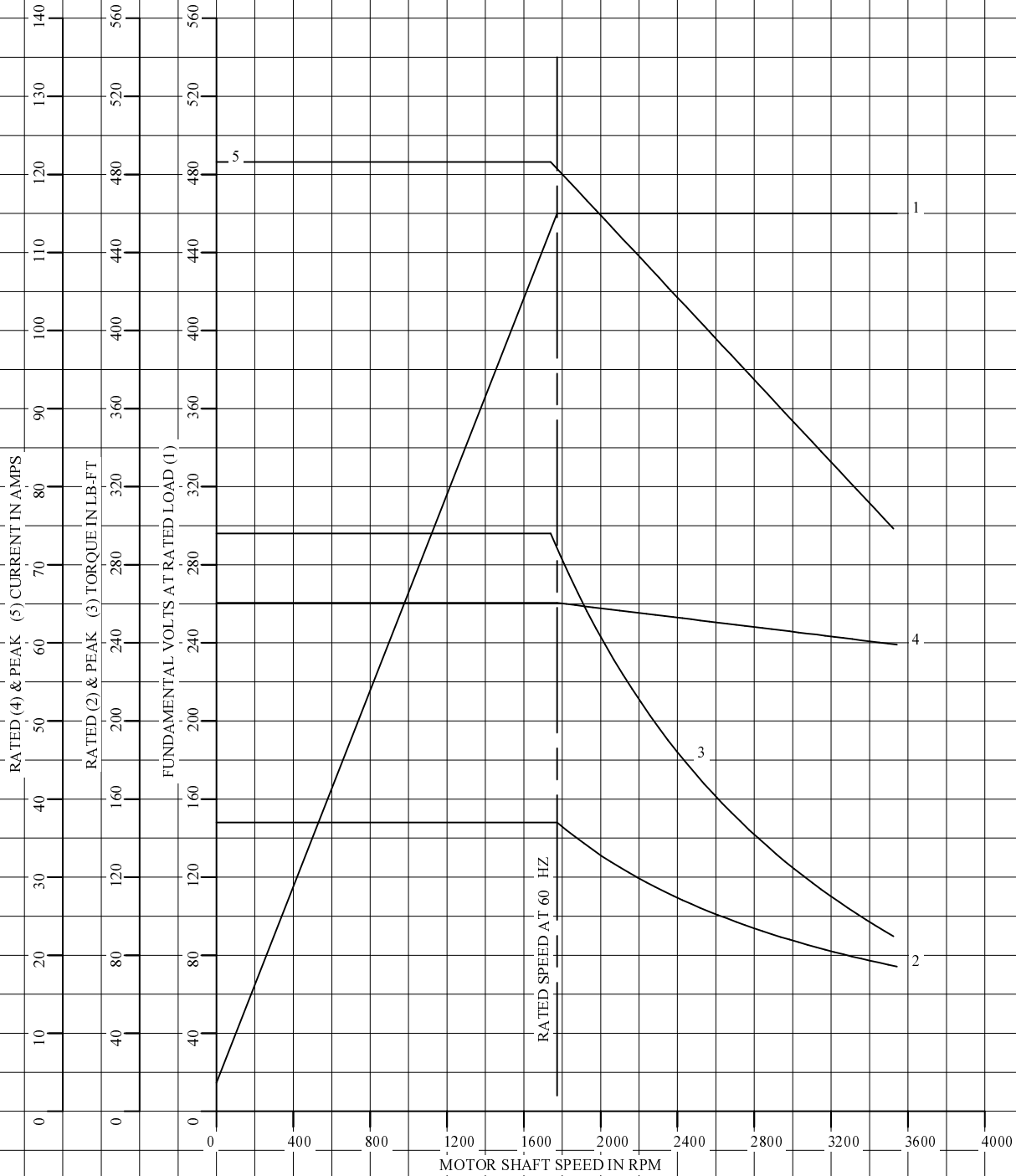


DR. BY B. GRANT  
 CK. BY B. GRANT  
 APP. BY T. CUFR  
 DATE 8-14-06

**A-C MOTOR**  
**PERFORMANCE L3380A**  
**DATA**      ISSUE DATE **8-14-06**

REL S.O.	-	VOLTS	460	ENCLOSURE	TEBC	WYE CONN EQ CKT OHMS PER PHASE	
FRAME	FL2570	AMPS	65	MAX SAFE RPM	5000	(AT BASE RATING, 25 °C)	
HP	50	DUTY	CONT	IM (AMPS)	34	R1 .0778	X1 .380
BASE SPEED	1775	S.F.	1.0	P.F.@NL/FL	.049/.795	R2 .0486	X2 .480
PHASE/HERTZ	3/60	AMB °C/INSUL	40/H	WK <sup>2</sup> (Lb-Ft <sup>2</sup> )	3.84		XM 8.13

CORRELATED DATA  
VARIABLE SPEED AC MOTOR CURVES



REMARKS: TYPICAL DATA  
DATA VALID FOR NAMEPLATE SPEED RANGE ONLY



DR. BY B. GRANT  
CK. BY B. GRANT  
APP. BY T. CUFR  
DATE 8-14-06

A-C MOTOR  
PERFORMANCE  
CURVES

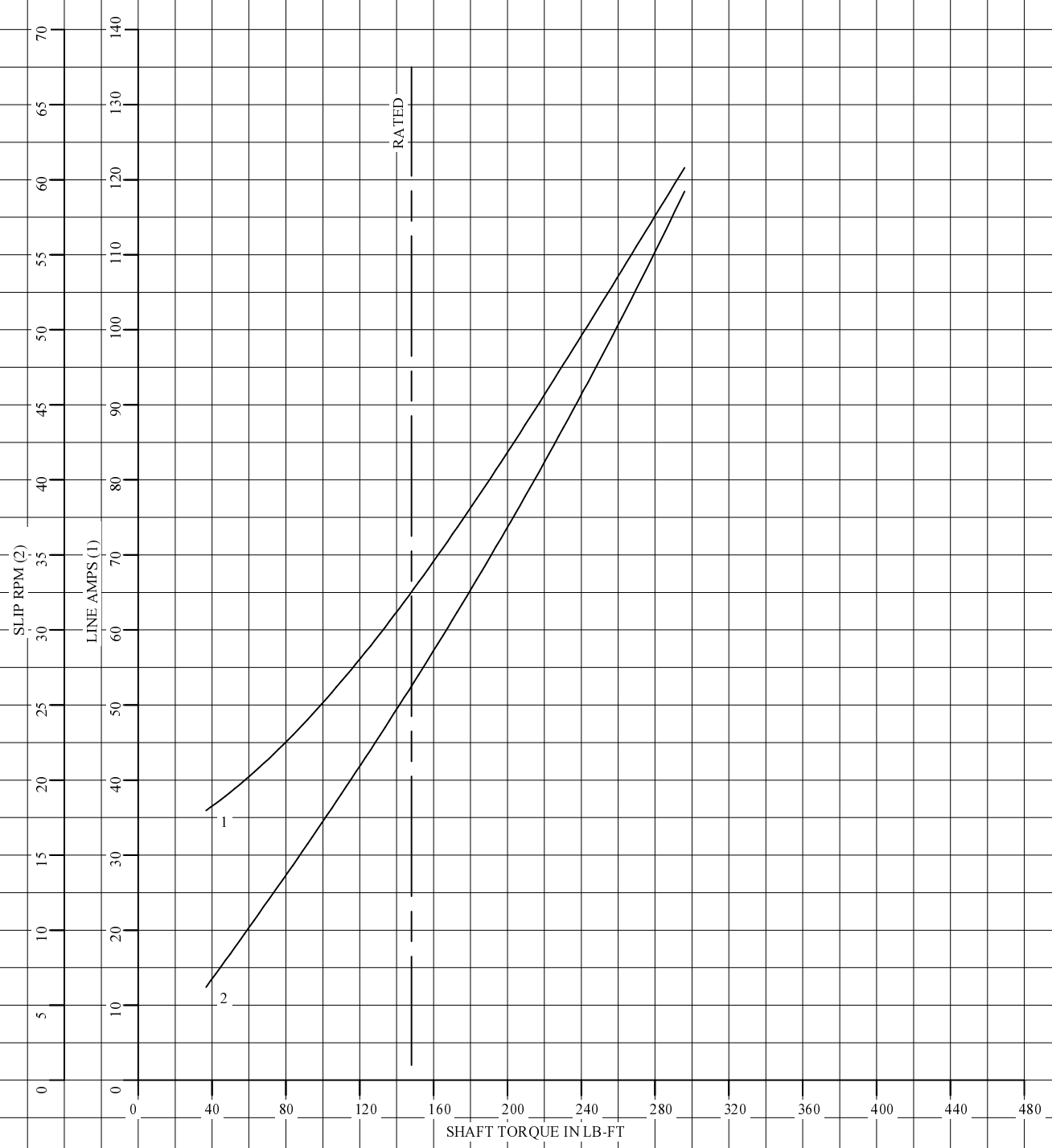
L3380A

SH 1 OF 2

ISSUE DATE 8-14-06

REL S.O.	-	VOLTS	460	ENCLOSURE	TEBC	WYE CONN EQ CKT OHMS PER PHASE	
FRAME	FL2570	AMPS	65	MAX SAFE RPM	5000	(AT BASE RATING, 25 °C)	
HP	50	DUTY	CONT	IM (AMPS)	34	R1	.0778 X1 .380
BASE SPEED	1775	S.F.	1.0	P.F.@NL/FL	.049/.795	R2	.0486 X2 .480
PHASE/HERTZ	3/60	AMB °C/INSUL	40/H	WK <sup>2</sup> (Lb-Ft <sup>2</sup> )	3.84		XM 8.13

CORRELATED DATA  
LOAD PERFORMANCE (CONSTANT V/HZ RANGE)



REMARKS: TYPICAL DATA  
DATA VALID FOR NAMEPLATE SPEED RANGE ONLY



DR. BY B. GRANT  
CK. BY B. GRANT  
APP. BY T. CUFR  
DATE 8-14-06

**A-C MOTOR PERFORMANCE CURVES**  
L3380A  
SH 2 OF 2  
ISSUE DATE 8-14-06