

REL S.O.	-	VOLTS	460	ENCLOSURE	TEBC	WYE CONN EQ CKT OHMS PER PHASE			
FRAME	FL2578	AMPS	75	MAX SAFE RPM	5000	(AT BASE RATING, 25 °C)			
HP	60	DUTY	CONT	IM (AMPS)	35	R1	.0612	X1	.309
BASE SPEED	1775	S.F.	1.0	P.F. @NL/FL	.048/.819	R2	.0409	X2	.427
PHASE/HERTZ	3/60	AMB °C/INSUL	40/H	WK ² (Lb-Ft ²)	4.2			XM	7.77

RATED FULL LOAD DATA

	RPM	HP	TORQUE LB-FT	FUND VOLTS	FREQ-HZ	AMPS
BASE SPEED	1774	60.0	178	460	60	75.0
MAX SPEED	3542	60.0	89	460	120	71.2
MIN SPEED	0	0	178	13.4	.865	75.0

LOAD PERFORMANCE AT BASE SPEED

	RPM	HP	TORQUE LB-FT	FUND VOLTS	FREQ-HZ	AMPS
NO LOAD	1800	0	0	460	60	34.3
1/4	1794	15.0	44	460	60	38.9
1/2	1788	30.0	88	460	60	48.1
3/4	1781	45.0	133	460	60	60.6
FULL LOAD	1774	60.0	178	460	60	75.0
O/L	1742	118	355	460	60	142

REMARKS: TYPICAL DATA
CORRELATED DATA

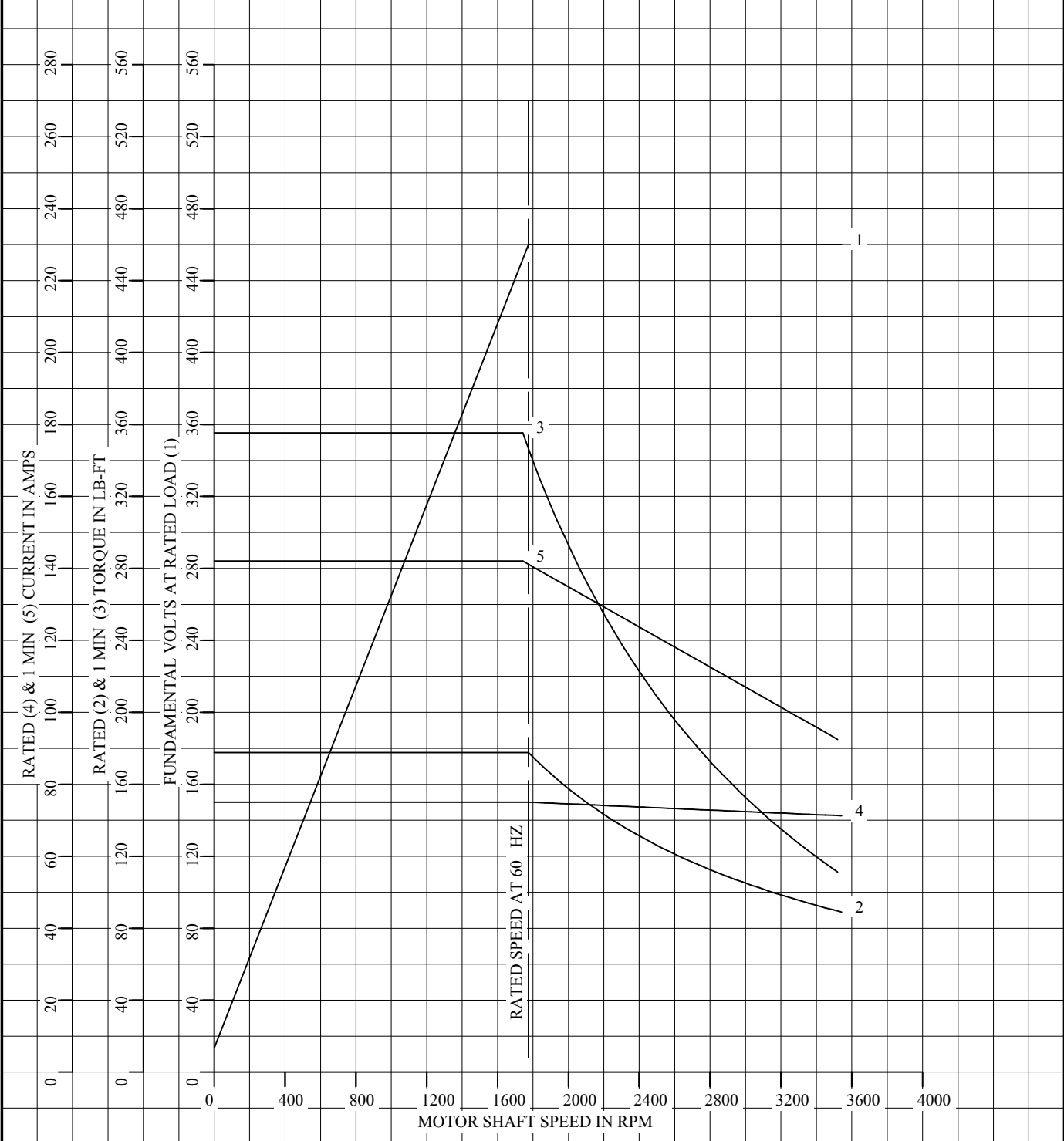


DR. BY B. GRANT
 CK. BY B. GRANT
 APP. BY T. CUFR
 DATE 8-11-06

**A-C MOTOR
 PERFORMANCE DATA** L3381A
 ISSUE DATE 8-11-06

REL S.O.	-	VOLTS	460	ENCLOSURE	TEBC	WYE CONN EQ CKT OHMS PER PHASE	
FRAME	FL2578	AMPS	75	MAX SAFE RPM	5000	(AT BASE RATING, 25 °C)	
HP	60	DUTY	CONT	IM (AMPS)	35	R1	.0612 X1 .309
BASE SPEED	1775	S.F.	1.0	P.F. @NL/FL	.048/.819	R2	.0409 X2 .427
PHASE/HERTZ	3/60	AMB °C/INSUL	40/H	WK ² (Lb-Ft ²)	4.2		XM 7.77

CORRELATED DATA
VARIABLE SPEED AC MOTOR CURVES



REMARKS: TYPICAL DATA
DATA VALID FOR NAMEPLATE SPEED RANGE ONLY



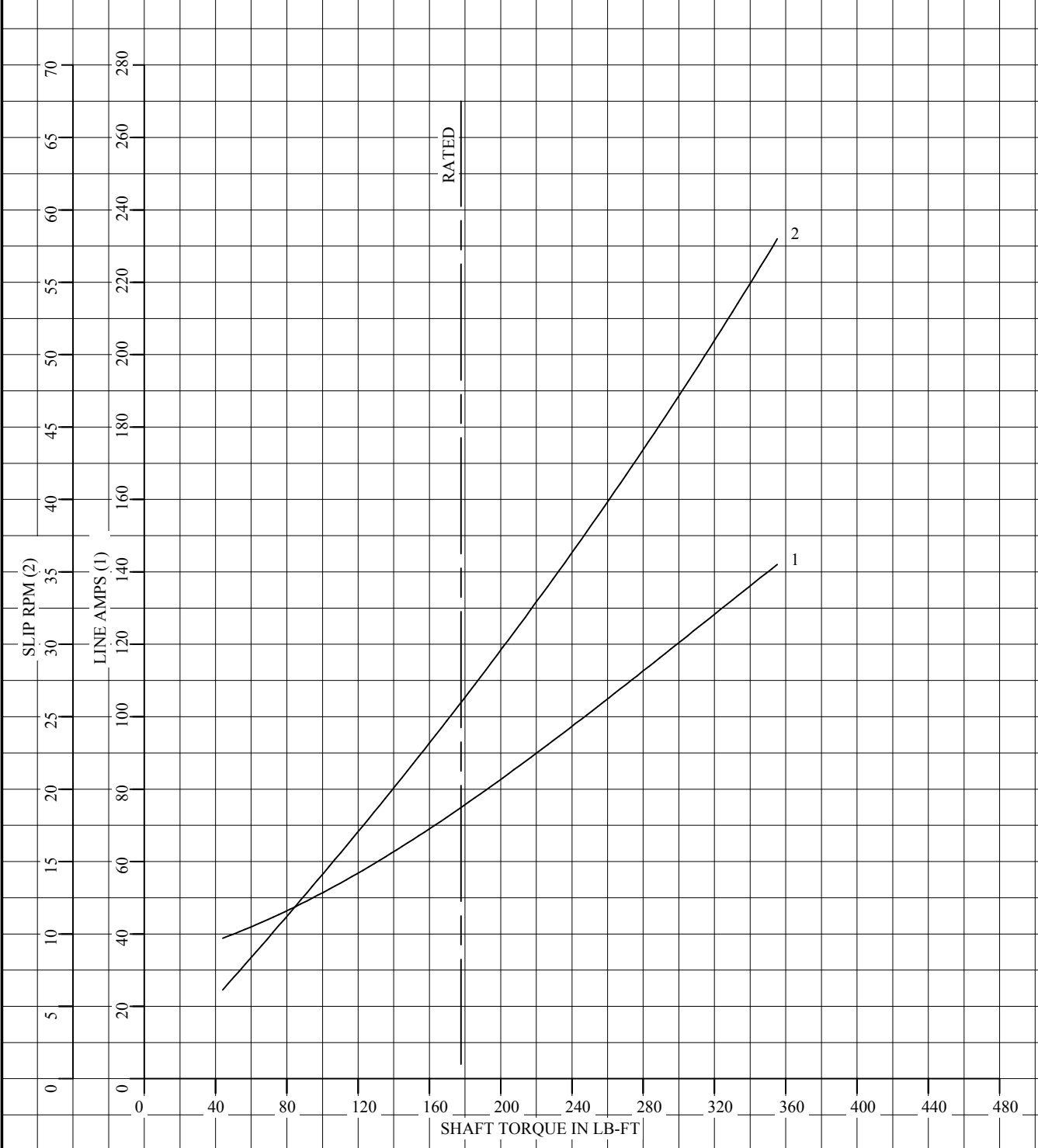
DR. BY B. GRANT
CK. BY B. GRANT
APP. BY T. CUFR
DATE 8-11-06

**A-C MOTOR
PERFORMANCE
CURVES**

L3381A
SH 1 OF 2
ISSUE DATE 8-11-06

REL S.O.	-	VOLTS	460	ENCLOSURE	TEBC	WYE CONN EQ CKT OHMS PER PHASE	
FRAME	FL2578	AMPS	75	MAX SAFE RPM	5000	(AT BASE RATING, 25 °C)	
HP	60	DUTY	CONT	IM (AMPS)	35	R1	.0612 X1 .309
BASE SPEED	1775	S.F.	1.0	P.F. @NL/FL	.048/.819	R2	.0409 X2 .427
PHASE/HERTZ	3/60	AMB °C/INSUL	40/H	WK ² (Lb-Ft ²)	4.2		XM 7.77

CORRELATED DATA
LOAD PERFORMANCE (CONSTANT V/Hz RANGE)



REMARKS: TYPICAL DATA
DATA VALID FOR NAMEPLATE SPEED RANGE ONLY



DR. BY B. GRANT
CK. BY B. GRANT
APP. BY T. CUFR
DATE 8-11-06

A-C MOTOR
PERFORMANCE
CURVES

L3381A
SH 2 OF 2
ISSUE DATE 8-11-06