



## AC Induction Motor Performance Data

Record # 36483

Typical performance - not guaranteed values

<b>Winding:</b> 06WGX181	<b>Type:</b> 0632M	<b>Enclosure:</b> TEBC
--------------------------	--------------------	------------------------

Nameplate Data				General Characteristics at 460 V, 60 Hz: High Volt Connection	
Rated Output (HP)	3			Full Load Torque	9.06 LB-FT
Volts	230/460			Start Configuration	DOL
Full Load Amps	8.2/4.1			Break Down Torque	33.1 LB-FT
R.P.M.	1755			Pull-Up Torque	18.2 LB-FT
Hz	60	Phase	3	Locked-rotor Torque	20.4 LB-FT
NEMA Design Code	B	KVA Code	J	Starting Current	29.8 Amps
Service Factor	1			No-load Current	2.14 Amps
NEMA Nom. Eff.	89.5	P.F.	77	Line-line Res. @ 25°C.	3.94 Ohms
Rating - Duty	40C AMB-CONT			Temp. Rise @ Rated Load	35°C
S.F. Amps				Temp. Rise @ S.F. Load	

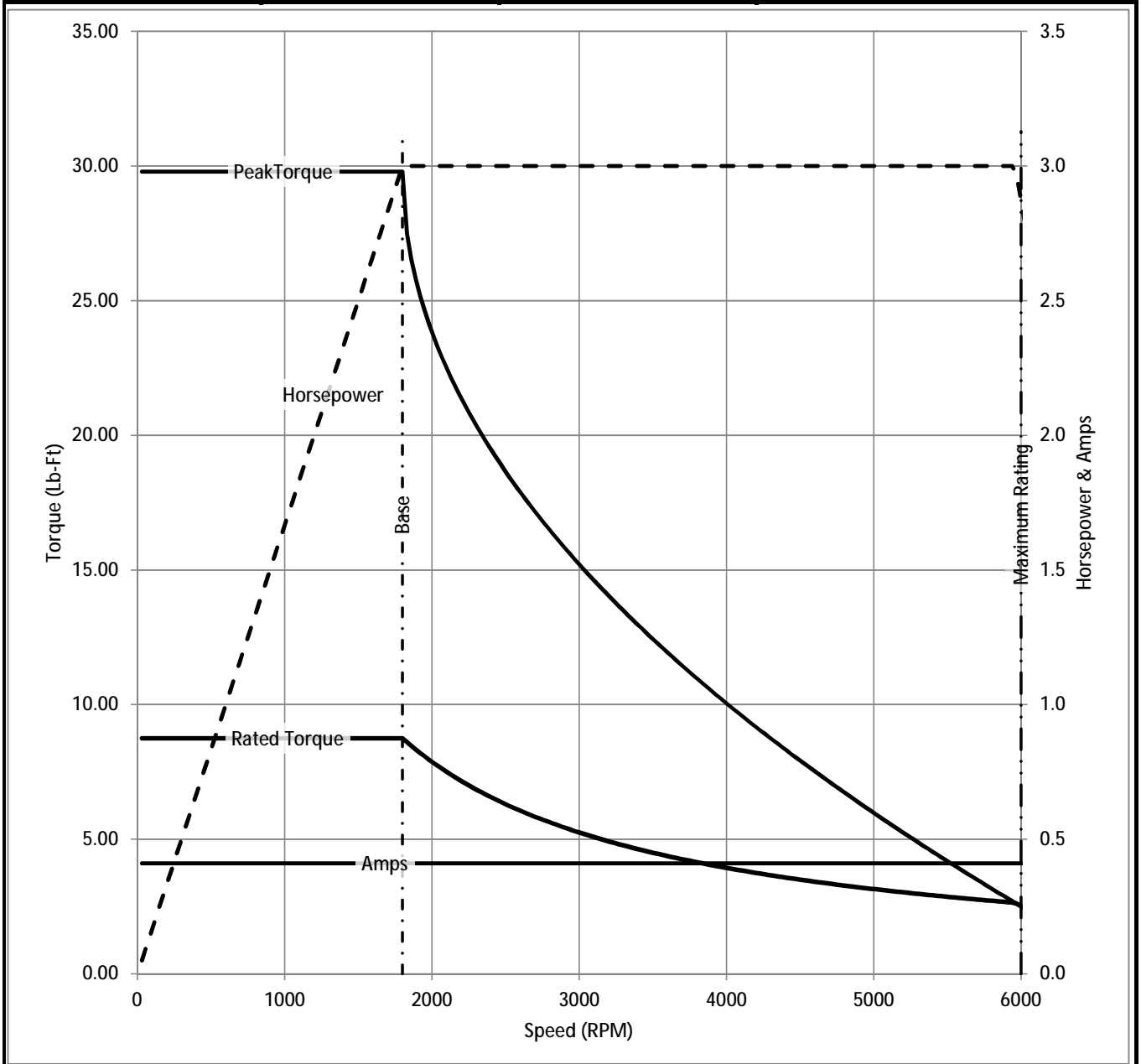
## Load Characteristics at 460 Volts, 60 Hz, 3 HP

% of Rated Load	25	50	75	100	125	150	S.F.
Power Factor	38	58	70	77	81	83	
Efficiency	83.2	88.3	89.8	89.7	89.1	87.7	
Speed	1790	1779	1769	1757	1744	1730	
Line Amperes	2.34	2.79	3.39	4.1	4.91	5.86	

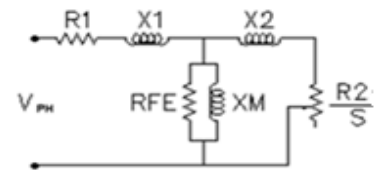
Baldor Electric Company Fort Smith, Arkansas

BALDOR • RELIANCE

Catalog	ZDM3661T	NP VOLTS	230/460	ENCLOSURE	TEBC	WYE CONN EQ CKT OHMS PER PHASE (BASE RATING, 20C)			
FRAME	182TC	NP AMPS	8.2/4.1	Base Volts	460	R1	1.930	X1	5.490
HP	3 HP	DUTY	Cont	Base AMPS	4.1	R2	1.370	X2	4.581
BASE SPEED	1800	MAX SAFE RPM	6000	Slip Hz	1.43			XM	119.333
PHASE/HZ	3/60	AMB <sup>0</sup> C/INSUL	40/H	WK <sup>2</sup> (lb-ft <sup>2</sup> )	0.298				



Remarks: Calculated Data



 <b>BALDOR</b> A MEMBER OF THE ABB GROUP	DR BY	<u>ENR</u>	<b>A-C MOTOR</b> <b>PERFORMANCE CURVES</b> <b>06F552X181Z1</b>
	CK BY		
	APP BY	<u>ENR</u>	
	DATE	<u>2/27/2013</u>	
		ISSUE DATE	<u>2/27/2013</u>