

REL S.O.	-	VOLTS	460	ENCLOSURE	TENV	WYE CONN EQ CKT OHMS PER PHASE		
FRAME	FL1838	AMPS	7.2	MAX SAFE RPM	7200	(AT BASE RATING, 25 °C)		
HP	5	DUTY	CONT	IM (AMPS)	4.4	R1	.803	X1 2.62
BASE SPEED	1770	S.F.	1.0	P.F.@NL/FL	.069/.745	R2	.523	X2 3.46
PHASE/HERTZ	3/60	AMB °C/INSUL	60/H	WK <sup>2</sup> (Lb-Ft <sup>2</sup> )	.528			XM 59.7

**RATED FULL LOAD DATA**

	RPM	HP	TORQUE LB-FT	FUND VOLTS	FREQ-HZ	AMPS
BASE SPEED	1770	5.01	15	460	60	7.44
MAX SPEED	3534	5.00	7	460	120	6.76
MIN SPEED	0	0	15	16.7	.989	7.44

**LOAD PERFORMANCE AT BASE SPEED**

	RPM	HP	TORQUE LB-FT	FUND VOLTS	FREQ-HZ	AMPS
NO LOAD	1800	0	0	460	60	4.30
1/4	1792	1.25	4	460	60	4.71
1/2	1785	2.50	7	460	60	5.38
3/4	1778	3.75	11	460	60	6.30
FULL LOAD	1770	5.00	15	460	60	7.44
O/L	1718	12.1	37	460	60	15.8

**BLOWER  
DATA**

VOLTS	PH/HZ	FL AMPS	LR AMPS	FRAME	CFM

REMARKS: TYPICAL DATA

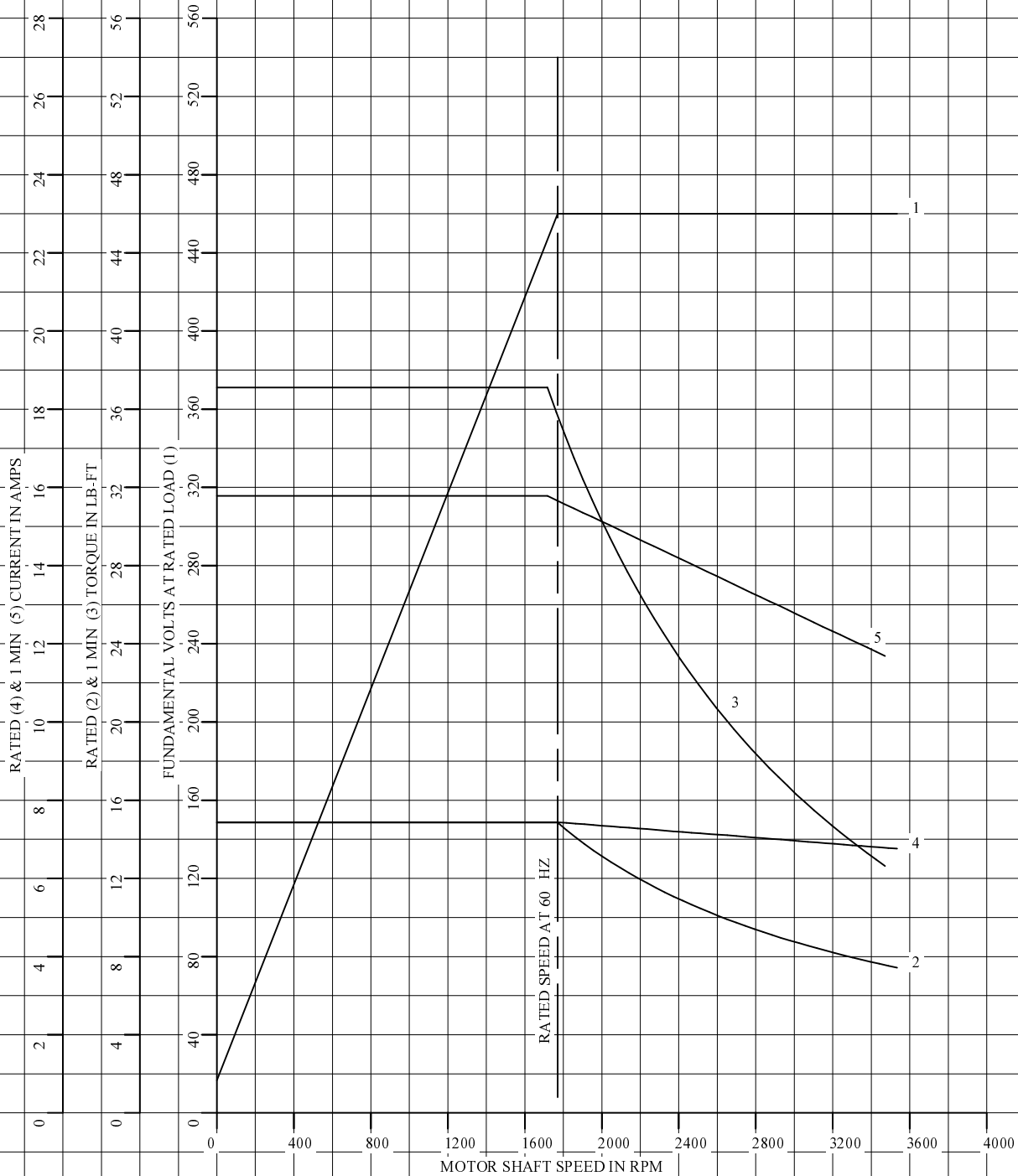


DR. BY B. GRANT  
 CK. BY B. GRANT  
 APP. BY T. CUFR  
 DATE 3-7-06

**A-C MOTOR  
 PERFORMANCE L3221A  
 DATA**      ISSUE DATE 3-7-06

REL S.O.	-	VOLTS	460	ENCLOSURE	TENV	WYE CONN EQ CKT OHMS PER PHASE	
FRAME	FL1838	AMPS	7.2	MAX SAFE RPM	7200	(AT BASE RATING, 25 °C)	
HP	5	DUTY	CONT	IM (AMPS)	4.4	R1	.803
BASE SPEED	1770	S.F.	1.0	P.F.@NL/FL	.069/.745	R2	.523
PHASE/HERTZ	3/60	AMB °C/INSUL	60/H	WK <sup>2</sup> (Lb-Ft <sup>2</sup> )	.528	X1	2.62
						X2	3.46
						XM	59.7

VARIABLE SPEED AC MOTOR CURVES



REMARKS: TYPICAL DATA  
DATA VALID FOR NAMEPLATE SPEED RANGE ONLY



DR. BY B. GRANT  
CK. BY B. GRANT  
APP. BY T. CUFR  
DATE 3-7-06

A-C MOTOR  
PERFORMANCE  
CURVES

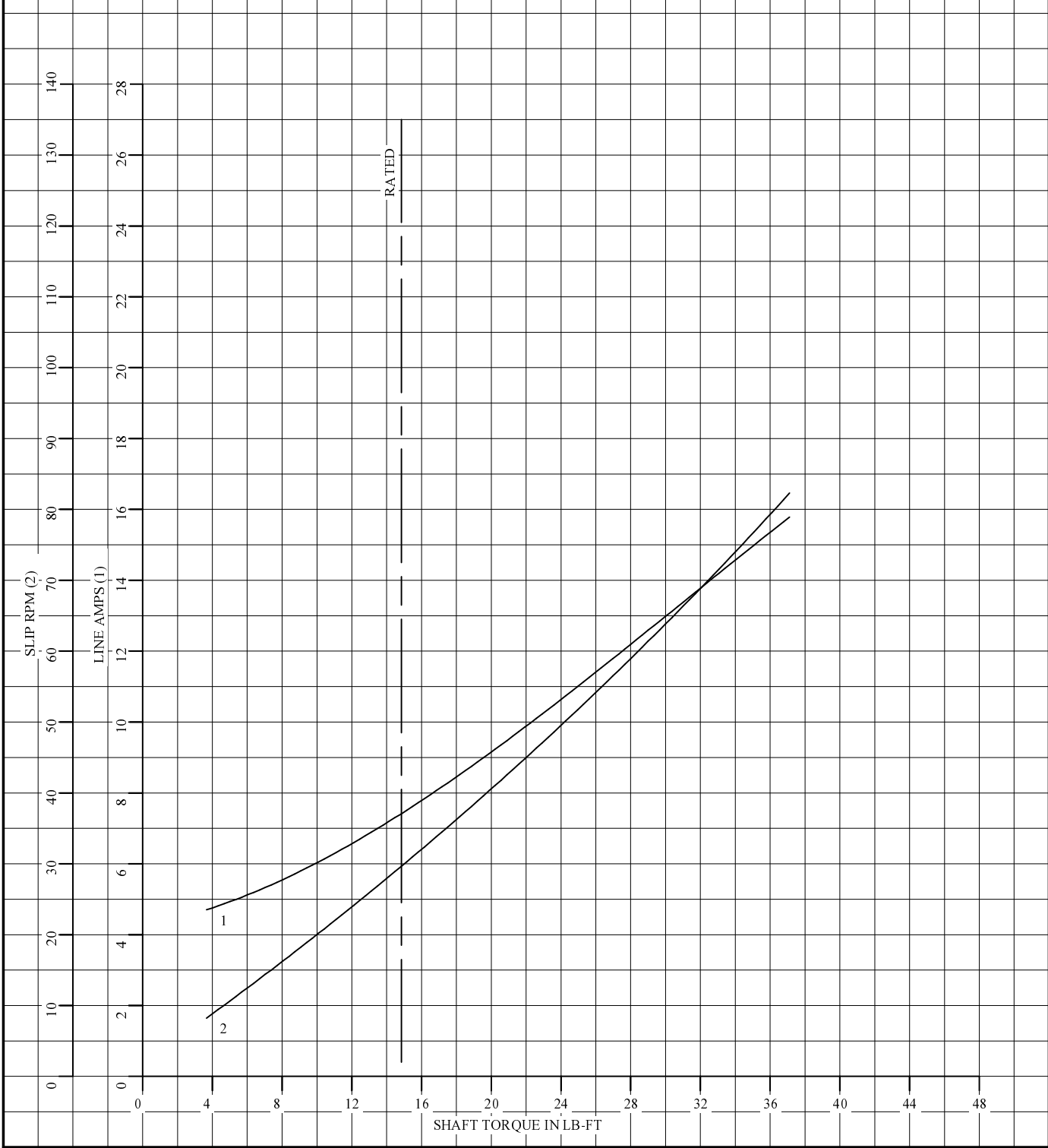
L3221A

SH 1 OF 2

ISSUE DATE 3-7-06

REL S.O.	-	VOLTS	460	ENCLOSURE	TENV	WYE CONN EQ CKT OHMS PER PHASE	
FRAME	FL1838	AMPS	7.2	MAX SAFE RPM	7200	(AT BASE RATING, 25 °C)	
HP	5	DUTY	CONT	IM (AMPS)	4.4	R1	.803 X1 2.62
BASE SPEED	1770	S.F.	1.0	P.F.@NL/FL	.069/.745	R2	.523 X2 3.46
PHASE/HERTZ	3/60	AMB °C/INSUL	60/H	WK <sup>2</sup> (Lb-Ft <sup>2</sup> )	.528		XM 59.7

LOAD PERFORMANCE (CONSTANT V/HZ RANGE)



REMARKS: TYPICAL DATA  
DATA VALID FOR NAMEPLATE SPEED RANGE ONLY



DR. BY B. GRANT  
 CK. BY B. GRANT  
 APP. BY T. CUFR  
 DATE 3-7-06

**A-C MOTOR  
 PERFORMANCE  
 CURVES**

**L3221A**  
 SH 2 OF 2  
 ISSUE DATE 3-7-06