



AC Induction Motor Performance Data

Record # 12831

Typical performance - not guaranteed values

Winding: 39WGW632	Type: 3956M	Enclosure: TENV
--------------------------	--------------------	------------------------

Nameplate Data				General Characteristics at 460 V, 60 Hz: High Volt Connection	
Rated Output (HP)	10			Full Load Torque	30 LB-FT
Volts	230/460			Start Configuration	DOL
Full Load Amps	24/12			Break Down Torque	114 LB-FT
R.P.M.	1765			Pull-Up Torque	41.5 LB-FT
Hz	60	Phase	3	Locked-rotor Torque	58 LB-FT
NEMA Design Code	B	KVA Code	H	Starting Current	87 Amps
Service Factor	1			No-load Current	4.4 Amps
NEMA Nom. Eff.	91.7	P.F.	85	Line-line Res. @ 25°C.	0.744 Ohms
Rating - Duty	40C AMB-CONT			Temp. Rise @ Rated Load	89°C
S.F. Amps				Temp. Rise @ S.F. Load	

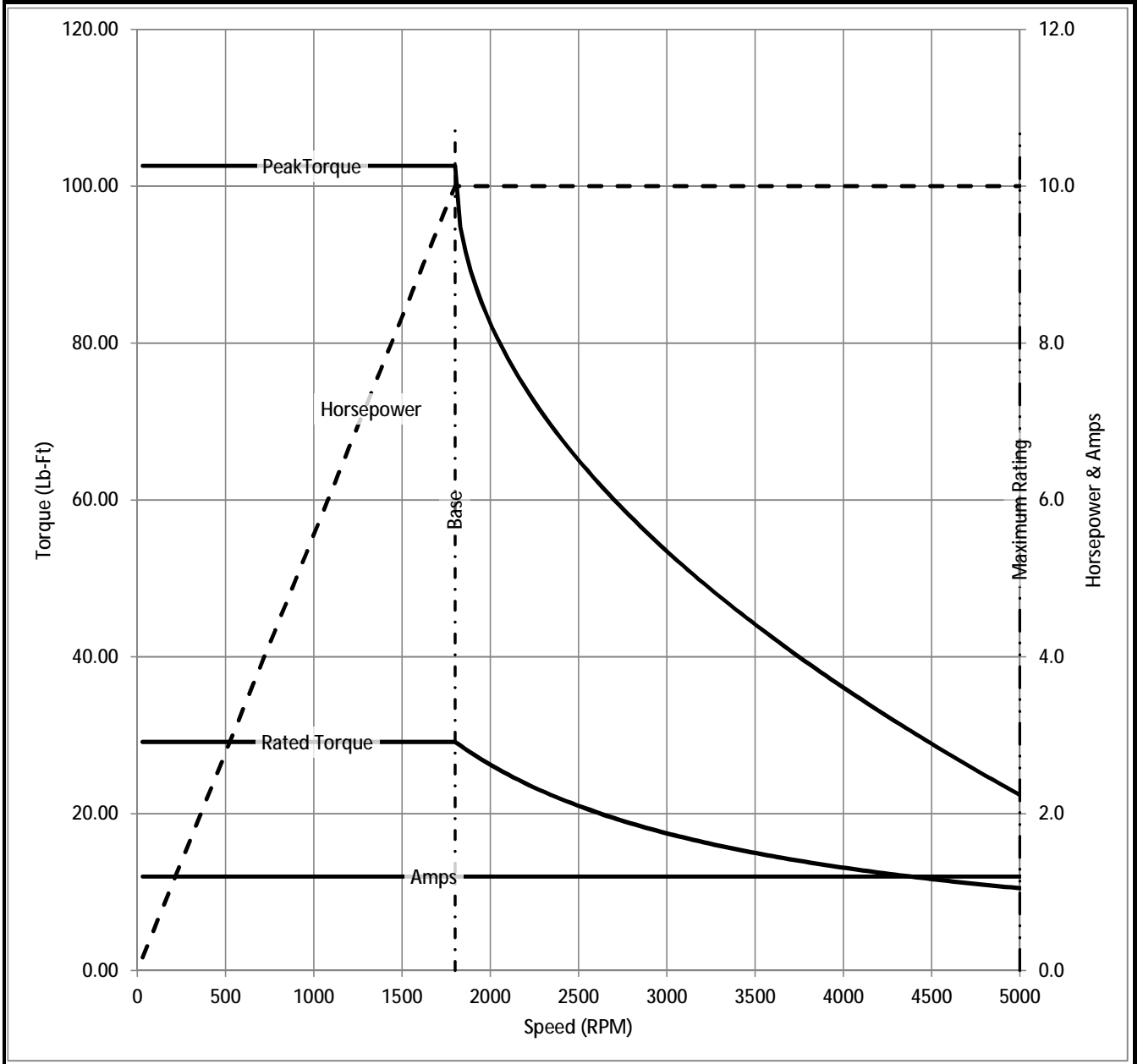
Load Characteristics at 460 Volts, 60 Hz, 10 HP

% of Rated Load	25	50	75	100	125	150	S.F.
Power Factor	52	72	81	85	86	87	
Efficiency	87.7	91.7	92.4	92	91.2	90.1	
Speed	1791	1783	1774	1764	1753	1741	
Line Amperes	5.3	7.2	9.5	12	14.9	17.9	

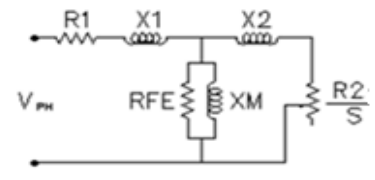
Baldor Electric Company Fort Smith, Arkansas



Catalog	ZDWNM22938T	NP VOLTS	230/460	ENCLOSURE	TENV	WYE CONN EQ CKT OHMS PER PHASE (BASE RATING, 20C)			
FRAME	254TC	NP AMPS	24/12	Base Volts	460	R1	0.355	X1	1.628
HP	10 HP	DUTY	Cont	Base AMPS	12	R2	0.319	X2	2.049
BASE SPEED	1800	MAX SAFE RPM	5000	Slip Hz	1.20			XM	56.060
PHASE/HZ	3/60	AMB ⁰ C/INSUL	40/H	WK ² (lb-ft ²)	2.45				



Remarks: Calculated Data



 BALDOR A MEMBER OF THE ABB GROUP	DR BY	<u>ENR</u>	A-C MOTOR PERFORMANCE CURVES 39S001W632Z1
	CK BY		
	APP BY	<u>ENR</u>	
	DATE	<u>3/6/2013</u>	
			ISSUE DATE 3/6/2013