

BALDOR • RELIANCE

Customer information packet

BSM80N-233AA

BSM80N-233AA (NEO) T'STAT, RESOLVER

Specifications

Enclosure	TENV
Nameplate Speed	6000
Agency Approvals	CE CSA TUV UR
Base Indicator	Bracket Mounted
Dimensional Drawing Numbers	S2LYP100
Frame	D100D
Frame Material	Exposed Laminations
Motor Lead Quantity/Wire Size	3 @ 16 AWG
Motor Standards	IEC
Mounting Arrangement	F1
Nameplate Output	1.57KW
Shaft Rotation	Reversible

Part detail

Revision	Z
Type	AC
Mech. spec.	S2P100
Base	
Status	PRD/A
Elec. spec.	S2WGW044
Layout	S2LYP100
Eff. date	11-04-2022
CD Diagram	CD0006A02
Poles	04
Leads	3#16
Proprietary	False
Created date	01-01-0001

Nameplate

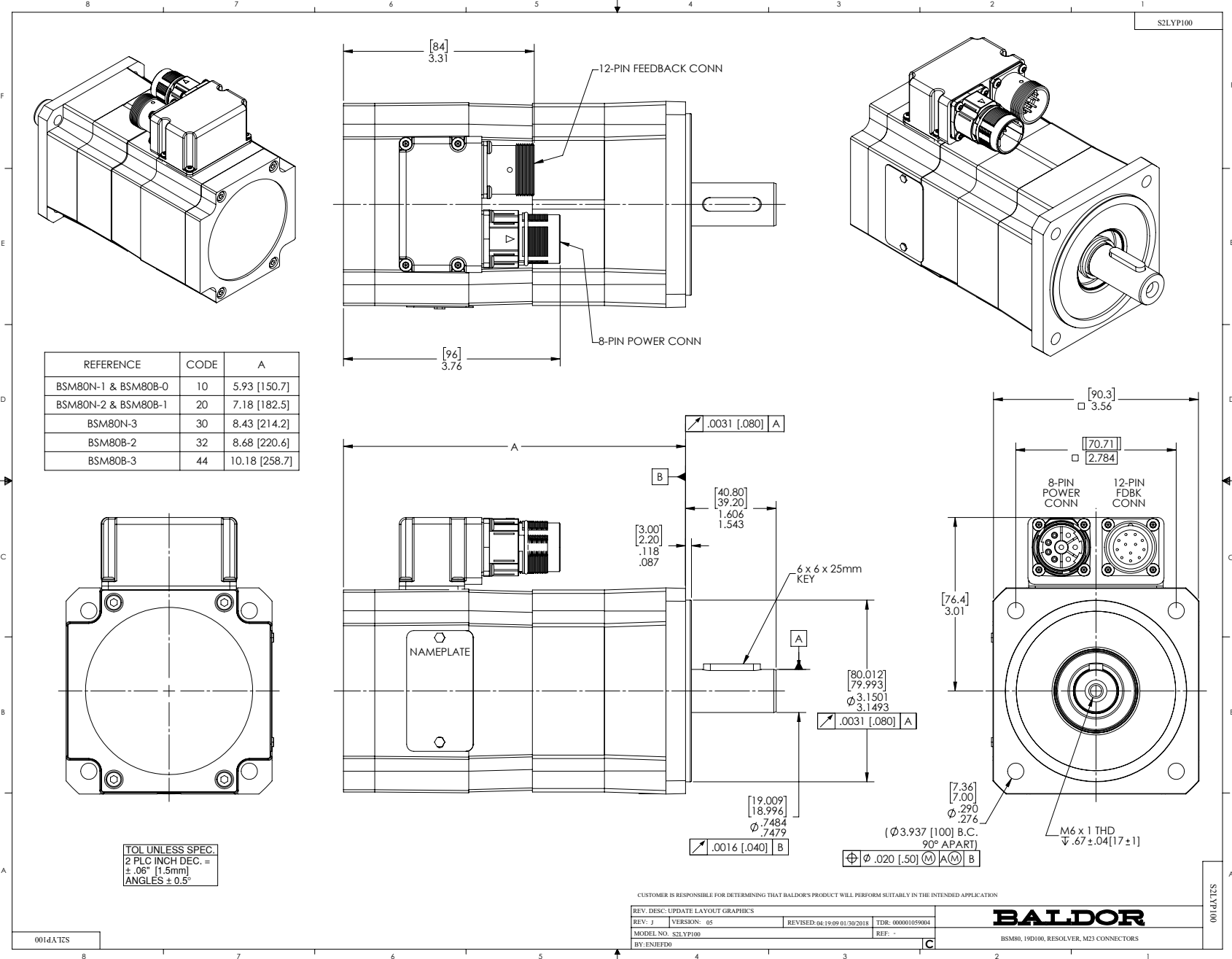
NP2864L									
CAT.NO.	BSM80N-233AA								
BLANK									
SPEC.	S2P100W044G1								
MFG.NO.									
TORQ CONT STALL	3.2 NM								
CUR CONT STALL/A RMS	8.82								
POWER	1.57KW								
RATED SPEED/RPM(1/MIN)	6000								
RATED BUS VOLTS	200								
PEAK CUR/A RMS	31.8								
MAX SPEED/RPM(1/MIN)	7000			AMB.	25				
CLASS	F	IP	54	IC	410	MOTOR MASS	5.4		

Parts list

Part number	Description	Quantity
SA054797	SA S2P100W044G1	1.000 ea
RA049434	RA S2P100W044G1	1.000 ea
WD1000A33	62307-2 AMP TERM,30K/REELREPLACING A19)3	4.000 ea
RM1020A10	O-RING, -041 BUNA-N, .070 CS X 2.989 ID	1.000 ea
HA7013	CLAMP, RESOLVER, PLASTIC "C-SHAPE"	1.000 ea
62YW0025A007	EPOXY LOCK SCREW,M2.5X7 TORX PAN HD TAPT	3.000 ea
84YN0040J016	M4 X 16MM SHC SCREW	4.000 ea
HW5002A93	RET RING #NT002-145 BEVELED	1.000 ea
HW2512E109	KEY, 6 X 6 X 25MM ROUND ENDED	1.000 ea
HW5109A04	WASHER, SPLIT WAVE SPRING, FOR 32MM BORE	2.000 ea
HA2113A03	TOLERANCE RING 8MM X 7MM TYPE BN8X7C	1.000 ea
S2EP3907A03	ENDPLATE, FR BRG, RESOLVER, BSM80	1.000 ea
84YN0040J020	M4 X 20MM SHC SCREW	4.000 ea
HW1021A04	WASHER, M4 SPLIT LOCK	4.000 ea
RM1020A10	O-RING, -041 BUNA-N, .070 CS X 2.989 ID	1.000 ea
MH4006A21	HEAT SHRINK TUBING 0.12 ID BLACK	0.542 ft
62YW0025A007	EPOXY LOCK SCREW,M2.5X7 TORX PAN HD TAPT	1.000 ea
S1GS1000	GASKET, 90 DEG ADAPTOR F/BSM MTRS	1.000 ea
S1CB3000A02	90 DEG ADAPTOR, METRIC CONNECTORS F/BSM	1.000 ea
GS1000A25	GASKET, METRIC CONNECTOR(CLOTH INSERTED	1.000 ea
99XM0356A02	STICK SCREW, #3-56 X .125 LG. HEX (MARK	2.000 ea
MJ5004A02	P-2 FRANKLIN RESIN KIT	0.001 ga
MJ5004A03	S-C FRANKLIN ACTIVATOR	0.001 qt
ME3001A02	449S2 FIBERGLASS 20 END ROVING AA-750	0.010 lb
MG2000A17	RUST INHIBITOR PART # SRPO #20	0.001 ga
BG6904C03	6904/61904 D.SH,C3,POLYREX EM	1.000 ea
RF0001	RESOLVER, BRUSHLESS, 1 SPEED, 1.4165 DIA	1.000 ea
LD2200A08	CUT LEAD GREEN&YELLOW #18 8 INCH W/ RIN	1.000 ea
S2CB3502A08	COVER, FEEDBACK, OMIT LOGO, COOL GRAY	1.000 ea
WD1455A01	CONNECTOR, FEEDBACK, M23 THDS, 12 PIN	1.000 ea
WD1649A10	1MM PIN CONTACT, TYCO#66507-4 (24-28AWG)	6.000 ea

WD5009A15	KIT-M23 MOTOR POWER CONN, 8-PIN	1.000 ea
62YW0025A007	EPOXY LOCK SCREW,M2.5X7 TORX PAN HD TAPT	12.000 ea
MG1025L02	WILKOFAST, 776.06 TEXTURE (BSM) BLACK	0.002 qt
MG1025Z09	CATALYST #060.06 WILCO	0.002 qt
MG1500Y08	PRIMER-WILKOPON (603.08A)YELLOW PRIMER W	0.002 qt
MG1025Z08	WILKO 603.08B PRIMER REDUCER TDR# 72361	0.002 qt
HA3173A10	THRU-BOLT PHILLIPS SPL HEAD 6-32 X 3.750	4.000 ea
NP2864L	NAMEPLATE BSM80 ALUM, LASER ETCHED	1.000 ea
25PA1008	PKG GRP, BSM 50, 63, & 80	1.000 ea
MS1240	BSM Motor Quick Start 1/16	1.000 ea
LB1534	MYLAR CE WARNING LABEL FOR SERVO MOTORS	1.000 ea
LB1617	UKCA COMPLIANCE STICKER	1.000 ea

S2LYP100



REFERENCE	CODE	A
BSM80N-1 & BSM80B-0	10	5.93 [150.7]
BSM80N-2 & BSM80B-1	20	7.18 [182.5]
BSM80N-3	30	8.43 [214.2]
BSM80B-2	32	8.68 [220.6]
BSM80B-3	44	10.18 [258.7]

TOL UNLESS SPEC.
 2 PLC INCH DEC. =
 ± .06" [1.5mm]
 ANGLES ± 0.5°

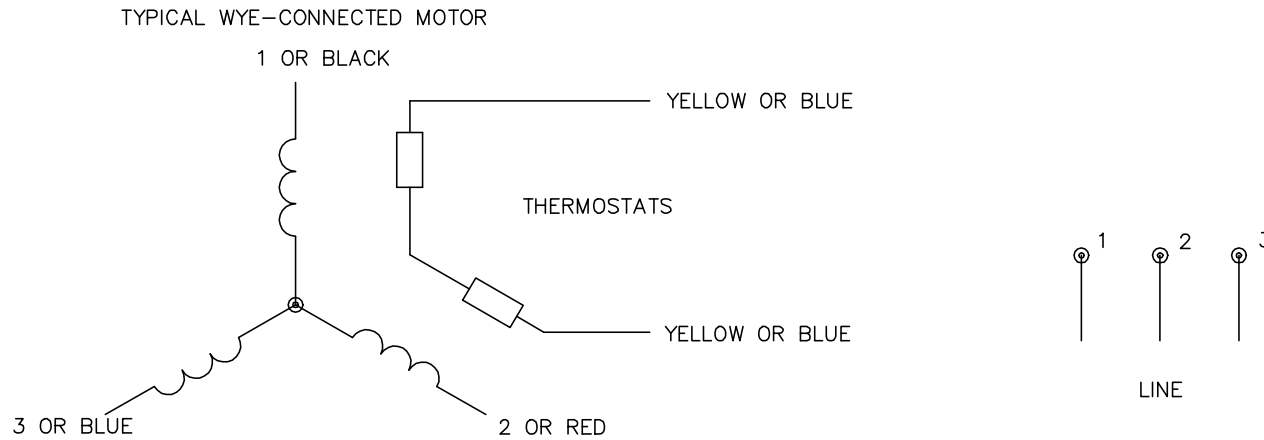
CUSTOMER IS RESPONSIBLE FOR DETERMINING THAT BALDOR'S PRODUCT WILL PERFORM SUITABLY IN THE INTENDED APPLICATION

REV. DESC: UPDATE LAYOUT GRAPHICS			
REV: J	VERSION: 05	REVISED: 04-19-09 01:30/2018	TDR: 00001059004
MODEL NO. S2LYP100		REF: -	
BY: ENJEFFD0			

BALDOR

BSM80, 19D100, RESOLVER, M23 CONNECTORS

CD0006A02



NOTES:

1. INTERCHANGE ANY TWO LINE LEADS TO REVERSE ROTATION.
2. ACTUAL NUMBER OF INTERNAL PARALLEL CIRCUITS MAY VARY.

REV. DESC: REMOVED "OPTIONAL" FROM PRINT, SERVO REQ'S T'STATS		
REV. LTR: D	VERSION: 03	TDR: 000000414937
CD0006A02	FILE: \AAA\00068\606	REVISED: 10:02:28 11/21/2006
	MTL: -	BY: ENJEFD0

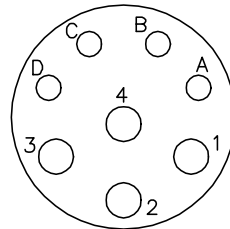
BALDOR ELECTRIC Co.

3PH, SV, 3 LEADS, WYE CONNECTED

CD0006A02

CD1321

8 PIN THREADED CONNECTOR
(CRIMP STYLE)
(INSERTION SIDE)



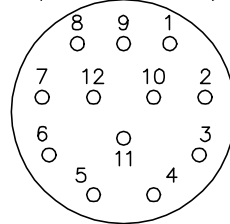
MOTOR CONNECTIONS

PIN	FUNCTION	INTERNAL/EXTERNAL MARKINGS
A	THERMAL SWITCH	YELLOW
B	THERMAL SWITCH	YELLOW
C	BRAKE (OPTIONAL)	BLACK (* RED)
D	BRAKE (OPTIONAL)	BLACK
1	U	BLACK OR T1
2	GROUND	GREEN OR **GREEN/YELLOW
3	W	BLUE OR T3
4	V	RED OR T2

* WHEN REQUIRED

**CE MOTORS REQUIRE GREEN/YELLOW GROUND

12 PIN THREADED CONNECTOR
(CRIMP STYLE)
(INSERTION SIDE)



RESOLVER CONNECTIONS

PIN	FUNCTION	INTERNAL WIRE COLOR
1	REF HI R1	RED/WHITE
2	REF LO R2	YELLOW/WHITE
3	COS+ S1	RED
4	COS- S3	BLACK
5	SINE- S4	BLUE
6	SINE+ S2	YELLOW

CD1321

REV. DESC: ADD CE NOTE AND GREEN/YELLOW GROUND

REV. LTR: F

VERSION: 03

TDR: 000001192301

FILE: \AAA\00055\309

REVISED: 02:34:44 06/13/2022

BY: ENDANDO

MTL: -



BALDOR - RELIANCE®

BSM WIRING DIAG, POWER & RESOLVER, 8 & 12 PIN THD CONNECT.

SH 1 of 1