

BALDOR® • RELIANCE 

Product Information Packet

CBXMN050542

0.5HP,1770RPM,3PH,60HZ,56C,3512M,XPNV,F1

Part Detail							
Revision:	A	Status:	PRD/A	Change #:		Proprietary:	No
Type:	AC	Elec. Spec:	35WGG155	CD Diagram:	CD0005	Mfg Plant:	
Mech. Spec:		Layout:	35LYU641	Poles:	04	Created Date:	10-28-2021
Base:		Eff. Date:	07-14-2022	Leads:	9#18		

Specs			
Catalog Number:	CBXMN050542	Drip Cover:	No Drip Cover
Enclosure:	XPNV	Duty Rating:	CONT
Frame:	56C	Electrically Isolated Bearing:	Not Electrically Isolated
Frame Material:	Steel	Feedback Device:	NO FEEDBACK
Motor Letter Type:	Three Phase	Heater Indicator:	No Heater
Output @ Frequency:	.500 HP @ 60 HZ	Insulation Class:	F
	.330 HP @ 50 HZ	Inverter Code:	Inverter Duty
Synchronous Speed @ Frequency:	1800 RPM @ 60 HZ	IP Rating:	NONE
Voltage @ Frequency:	190.0 V @ 50 HZ	KVA Code:	M
	230.0 V @ 60 HZ	Lifting Lugs:	No Lifting Lugs
	380.0 V @ 50 HZ	Locked Bearing Indicator:	Locked Bearing
	460.0 V @ 60 HZ	Motor Lead Termination:	Flying Leads
XP Class and Group:	CLI GP D; CLII GP F,G	Motor Type:	3512M
XP Division:	Division I	Mounting Arrangement:	F1
Agency Approvals:	CSA	Power Factor:	69
	CSA EEV	Product Family:	General Purpose
	UR	Pulley Face Code:	C-Face
Auxillary Box:	No Auxillary Box	Rodent Screen:	None

Auxillary Box Lead Termination:	None	Shaft Ground Indicator:	No Shaft Grounding
Base Indicator:	Rigid	Shaft Rotation:	Reversible
Bearing Grease Type:	Polyrex EM (-20F +300F)	Speed Code:	Single Speed
Blower:	None	Motor Standards:	NEMA
Constant Torque Speed Range:	6	Starting Method:	Direct on line
Current @ Voltage:	.800 A @ 380.0 V	Thermal Device - Bearing:	None
	.800 A @ 460.0 V	Thermal Device - Winding:	Normally Closed Thermostat
	1.600 A @ 190.0 V	Vibration Sensor Indicator:	No Vibration Sensor
	1.600 A @ 230.0 V	Winding Thermal 1:	None
	1.800 A @ 208.0 V	Winding Thermal 2:	None
Design Code:	B	XP Temp Code:	T3C

Nameplate NP0887XPSLEV											
NO.					CC						
S/N					TEMP CODE	T3C					
SPEC.	35-0000-1383				INV.TYPE	PWM					
CAT.NO.	CBXMN050542				C HP FR	60		C HP TO	90		
HP	.5				CT HZ FROM	6		CT HZ TO	60		
VOLTS	208-230/460				VT HZ FROM	6		VT HZ TO	60		
AMPS	1.9-1.8/0.9				MAG CUR	1.3-1.6/0.8					
RPM	1770				MX RPM	2700					
HZ	60		PH	3		CL	H		NOM.EFF.	80	
SER.F.	1.00		DES	B		SL HZ	1		WK2	0.0866	
FRAME	56C		RATING	40C AMB-CONT							
	1.15 SF ON SINE WAVE										
	75C RISE										

Parts List		
Part Number	Description	Quantity
SA400575	SA 35-0000-1383	1.000 EA
RA391740	RA 35-0000-1383	1.000 EA
LB1119N	WARNING LABEL	1.000 EA
LC0145B01	CONNECTION LABEL	1.000 EA
NP0887XPSLEV	SS XP INV UL CSA-EEV CC CL-I GP-D	1.000 EA
85XU0407S04	4X1/4 U DRIVE PIN STAINLESS	4.000 EA
85XU0407S04	4X1/4 U DRIVE PIN STAINLESS	2.000 EA
MN416A01	TAG-INSTAL-MAINT no wire (2200bx) 4/22	1.000 EA
NP0018F	ALUM UL XP CONDUIT BOX NAMEPLATE	1.000 EA
MJ1000A02	GREASE, POLYREX EM EXXON	0.050 LB
HA3104A06	THRUBOLT 5/16-18 X 8.50 OHIO ROD	4.000 EA
XY3118A12	5/16-18 HEX NUT DIRECTIONAL SERRATION	4.000 EA
35EP1703A01	FR ENDPLATE, MACH	1.000 EA
HW5100A03	WAVY WASHER (W1543-017)	1.000 EA
35EP3702A01SP	PU EP-205 BRG-35X-56C-143-5TC	1.000 EA
84XN1032J20	SCREW, SOC 10-32 X 1 1/4"BMH4602	2.000 EA
HA3013A01	1/2-20X5/8 SPL.HX BOLT	2.000 EA
HW3021C06	3/32 DI X .625 PIN (F/S)	2.000 EA
35CB3001A01SP	EXPL CONDUIT BOX, MACH, 1/2" PIPE TAP LE	1.000 EA
11XW1032G06	10-32 X .38, TAPTITE II, HEX WSHR SLTD U	1.000 EA
HW3001B01	BRASS CUP WASHER, FOR #10 SCREW	1.000 EA
35CB3500A01SP	CONDUIT BOX LID, MACH	1.000 EA
51XN2520A16	SCREW, HEX WS SLT, ZN, 1/4-20 X 1.00	4.000 EA
65BK2100BQB	1-065-321-05-BQB BRAKE X	1.000 EA

Parts List (continued)		
Part Number	Description	Quantity
84XN3816J12	3/8-16X 3/4 SOCK HD, BK OX	4.000 EA
HW2501D04	KEY, 3/16 SQ X 0.625	1.000 EA
MG1500Y02	WILKOPON PRIMER YELLOW	0.022 GA
MG1025G29	WILKOFASST, 789.229, DARK CHARCOAL GRAY	0.022 GA
G0PA1000	PKG GRP, PRINT PK1026A06	1.000 EA
HW2501D13	KEY, 3/16 SQ X 1.375	1.000 EA
HA7000A04	KEY RETAINER 0.625 DIA SHAFTS	1.000 EA

AC Induction Motor Performance Data

Record # 87252

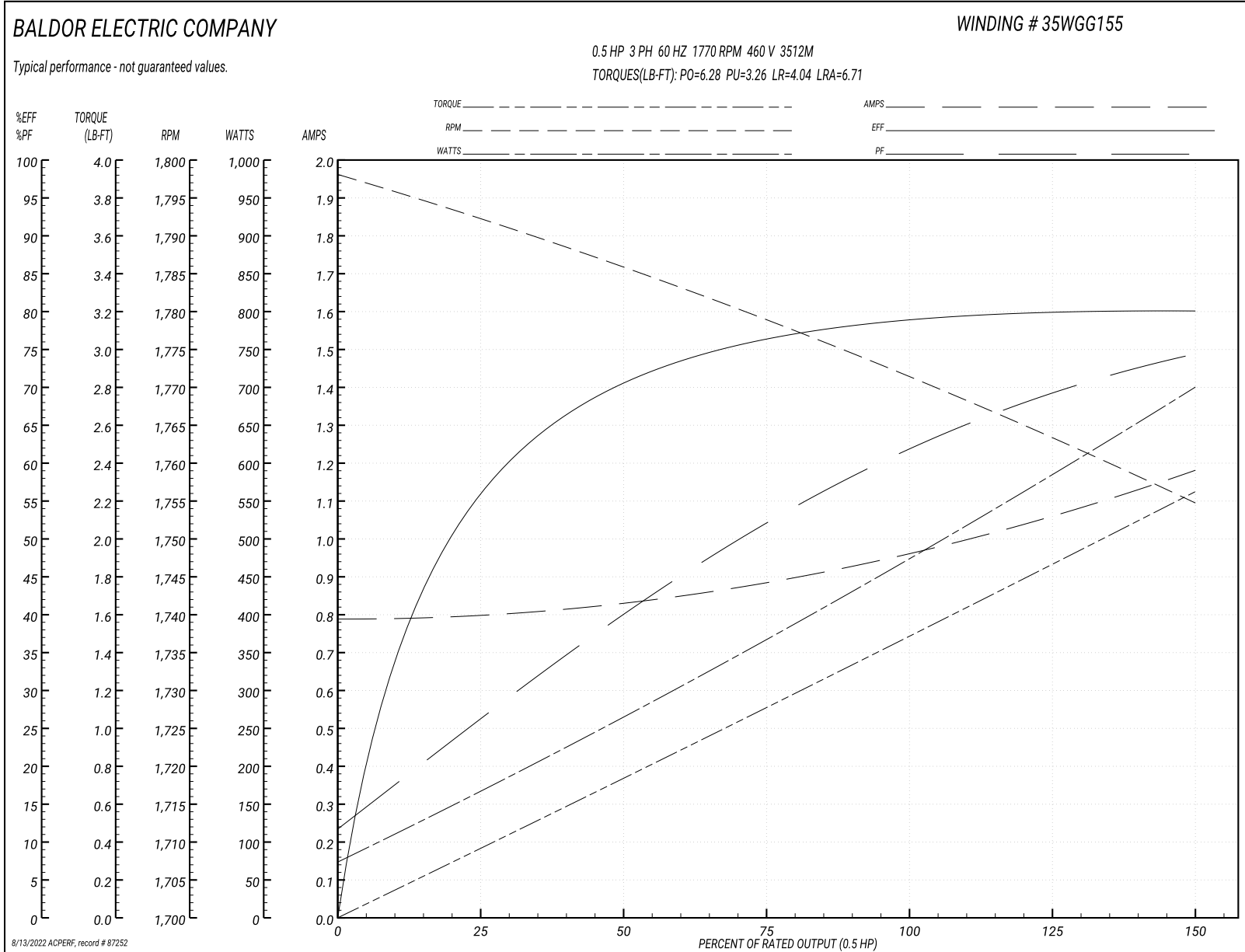
Preliminary Data Sheet

Winding: 35WGG155-R031			Type: 3512M	Enclosure: XPNV	
Nameplate Data			460 V, 60 Hz: High Voltage Connection		
Rated Output (HP)	.5		Full Load Torque	1.49 LB-FT	
Volts	230/460		Start Configuration	direct on line	
Full Load Amps	1.8/.9		Breakdown Torque	6.28 LB-FT	
R.P.M.	1770		Pull-up Torque	3.26 LB-FT	
Hz	60 Phase	3	Locked-rotor Torque	4.04 LB-FT	
NEMA Design Code	B KVA Code	M	Starting Current	6.71 A	
Service Factor (S.F.)	1.25		No-load Current	0.792 A	
NEMA Nom. Eff.	80 Power Factor	65	Line-line Res. @ 25°C	43.2 Ω	
Rating - Duty	40C AMB-CONT		Temp. Rise @ Rated Load	29°C	
S.F. Amps	2/1		Temp. Rise @ S.F. Load	35°C	
			Locked-rotor Power Factor	70.8	
			Rotor inertia	0.0866 lb-ft ²	

Load Characteristics 460 V, 60 Hz, 0.5 HP

% of Rated Load	25	50	75	100	125	150	S.F.
Power Factor	27	41	52	62	69	75	69
Efficiency	56.5	70.7	76.5	78.9	80	80	80
Speed	1792	1786	1779	1771	1763	1755	1763
Line amperes	0.795	0.827	0.889	0.966	1.06	1.18	1.06

Performance Graph at 460V, 60Hz, 0.5HP Typical performance - Not guaranteed values



AC Induction Motor Performance Data

Record # 87463

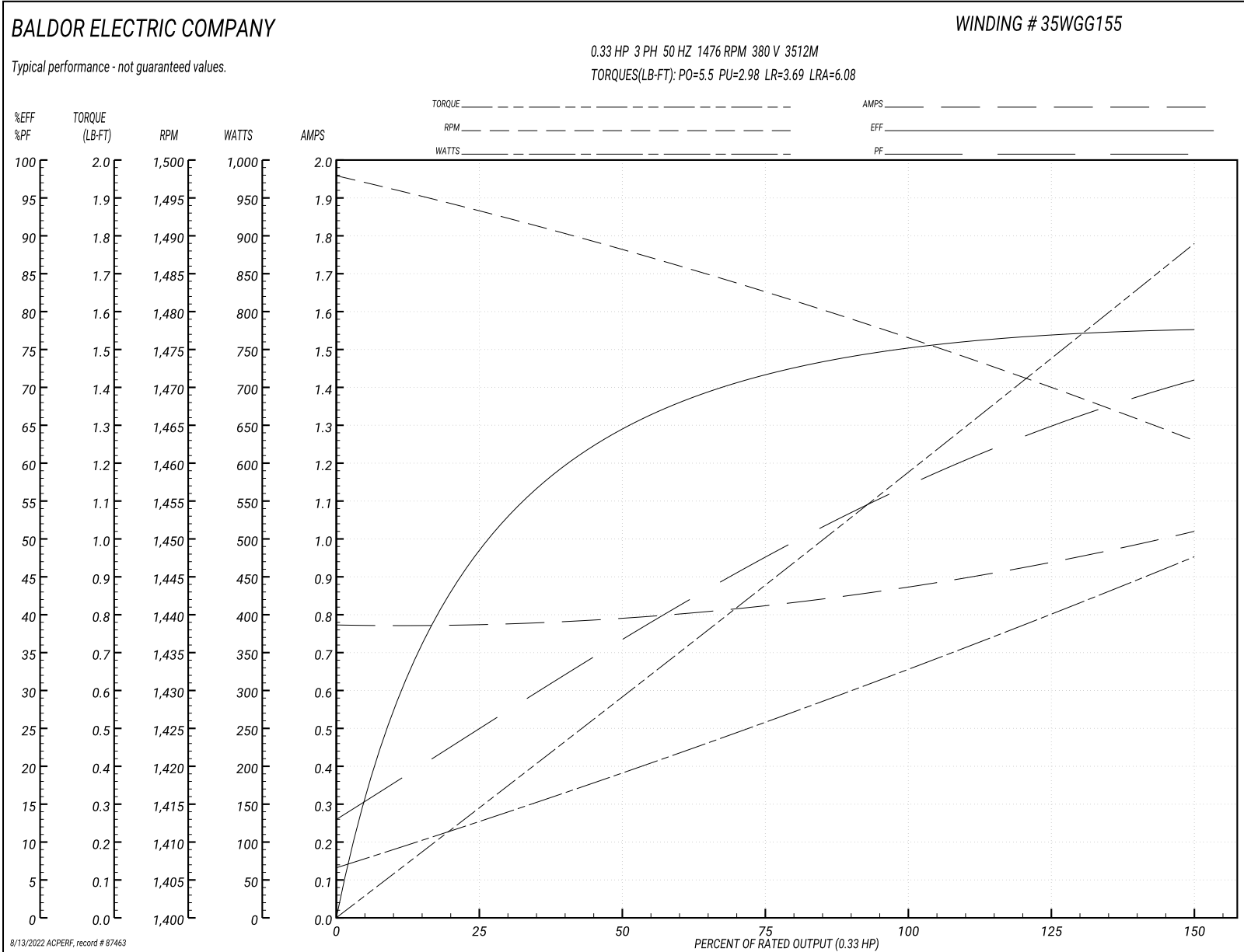
Preliminary Data Sheet

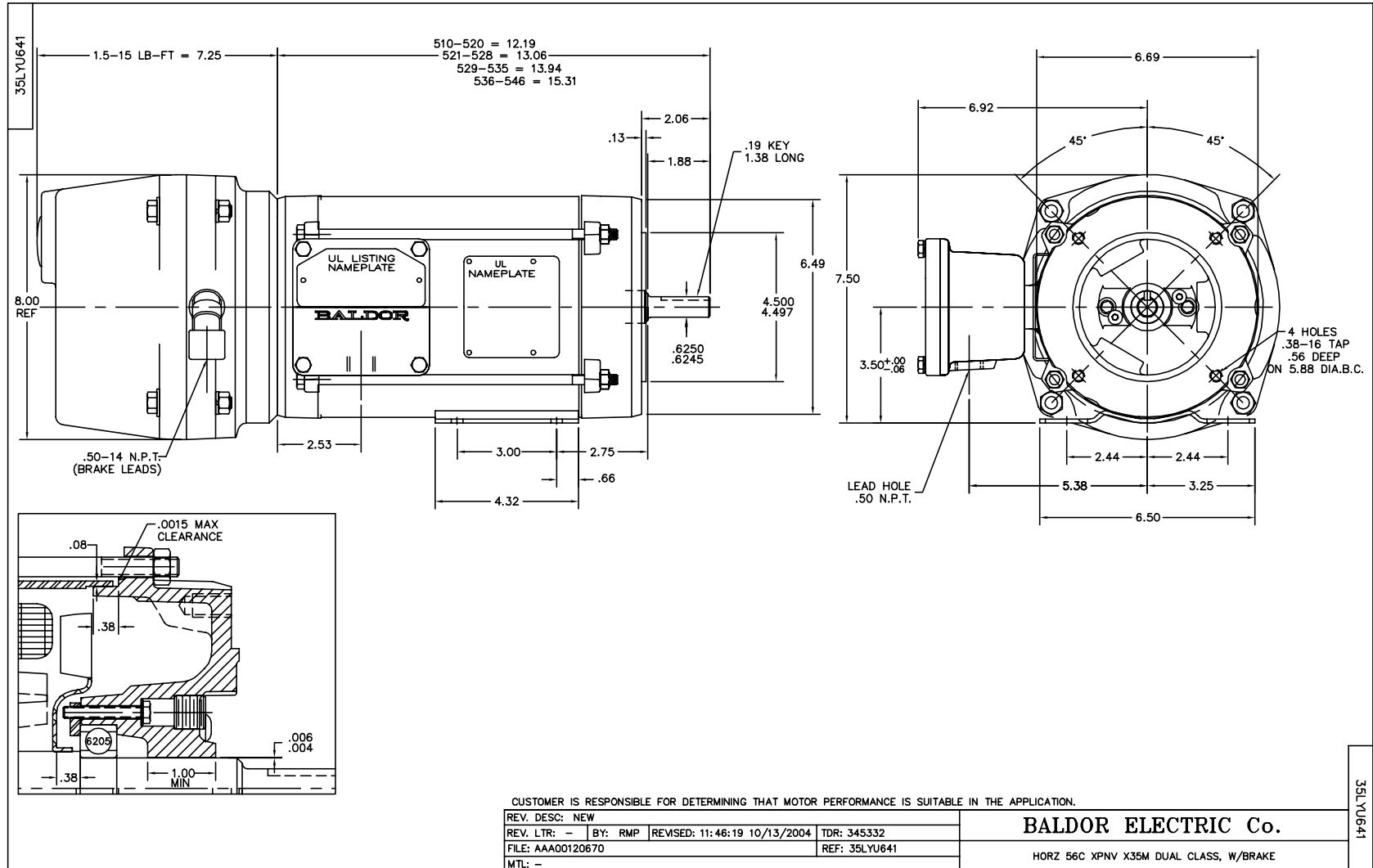
Winding: 35WGG155-R031		Type: 3512M		Enclosure: XPNV	
Nameplate Data			380 V, 50 Hz: High Voltage Connection		
Rated Output (HP)	.5//.33		Full Load Torque	1.18 LB-FT	
Volts	230/460//190/380		Start Configuration	direct on line	
Full Load Amps	1.8/.9//1.74/.87		Breakdown Torque	5.5 LB-FT	
R.P.M.	1770//1475		Pull-up Torque	2.98 LB-FT	
Hz	60//50	Phase	3	Locked-rotor Torque	3.69 LB-FT
NEMA Design Code	B	KVA Code	M	Starting Current	6.08 A
Service Factor (S.F.)	1.25		No-load Current	0.775 A	
NEMA Nom. Eff.	80	Power Factor	65	Line-line Res. @ 25°C	43.2 Ω
Rating - Duty	40C AMB-CONT		Temp. Rise @ Rated Load	25°C	
S.F. Amps	2/1		Temp. Rise @ S.F. Load	29°C	
			Locked-rotor Power Factor	76	
			Rotor inertia	0.0866 lb-ft ²	

Load Characteristics 380 V, 50 Hz, 0.33 HP

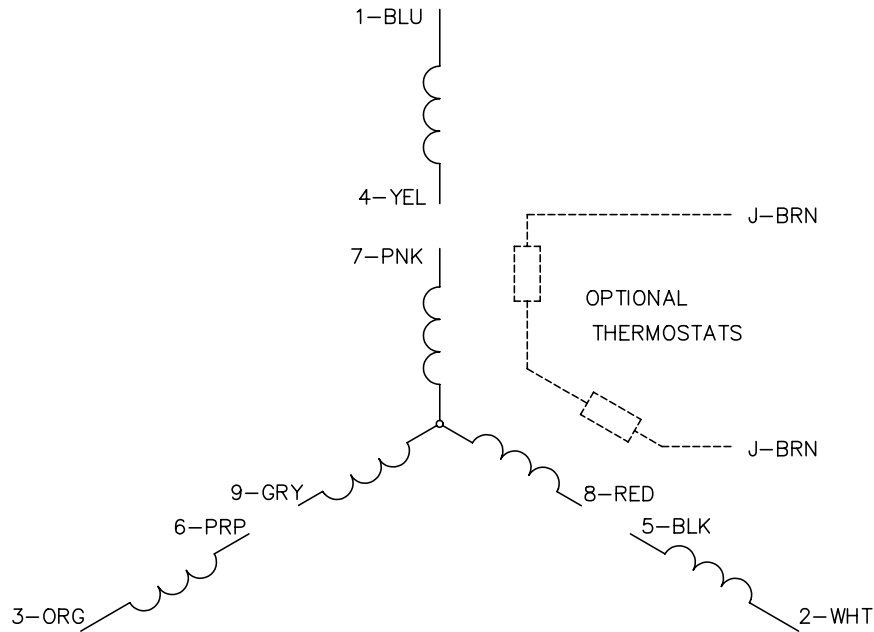
% of Rated Load	25	50	75	100	125	150	S.F.
Power Factor	26	37	48	57	65	71	69
Efficiency	48.8	64.7	71.8	75.2	77	77.5	80
Speed	1493	1488	1483	1476	1470	1463	1763
Line amperes	0.771	0.789	0.828	0.875	0.938	1.02	1.06

Performance Graph at 380V, 50Hz, 0.33HP Typical performance - Not guaranteed values

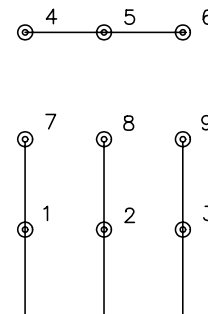




CD0005

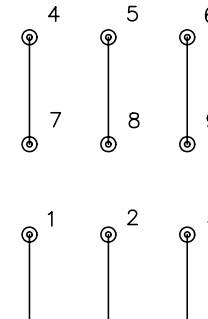


LOW VOLTAGE
(2Y)



LINE

HIGH VOLTAGE
(1Y)



LINE

NOTES:

1. INTERCHANGE ANY TWO LINE LEADS TO REVERSE ROTATION.
2. OPTIONAL THERMOSTATS ARE PROVIDED WHEN SPECIFIED.
3. ACTUAL NUMBER OF INTERNAL PARALLEL CIRCUITS MAY BE A MULTIPLE OF THOSE SHOWN ABOVE.
4. LEAD COLORS ARE OPTIONAL. LEADS MUST ALWAYS BE NUMBERED AS SHOWN.

REV. DESC: REVISE TO SHOW OPTIONAL COLORS			
REV. LTR: E	BY: JLP	REVISED: 01/19/99 10:15	TDR: 0171435
900000		FILE: AAA00005140	MDL: -
		MTL: -	

BALDOR ELECTRIC Co.

3PH, DV, 9 LEADS

CD0005

Marketing maintained PDF of MN416:

<http://www.baldor.com/support/Literature/Load.ashx/MN416?ManNumber=MN416>