

BALDOR • RELIANCE

Customer information packet

CDM3539

.5HP, 1140RPM, 3PH, 60HZ, 56C, 3428M, TEFC, F1

Class - None

Division - Not Applicable

Specifications

Enclosure	TEFC
Frame	56C
Frame Material	Steel
Frequency	60.00 Hz
Haz Area Class and Group	None
Haz Area Division	Not Applicable
Motor Letter Type	Three Phase
Output @ Frequency	.500 HP @ 60 HZ
Phase	3
Synchronous Speed @ Frequency	1200 RPM @ 60 HZ
Voltage @ Frequency	230.0 V @ 60 HZ 460.0 V @ 60 HZ
Agency Approvals	UR CCSA US
Ambient Temperature	40 °C
Auxillary Box	No Auxillary Box
Auxillary Box Lead Termination	None
Base Indicator	Rigid
Bearing Grease Type	Polyrex EM (-20F +300F)
Blower	None
Constant Torque Speed Range	6
Current @ Voltage	1.300 A @ 460.0 V 2.600 A @ 230.0 V
Design Code	B
Drip Cover	No Drip Cover
Duty Rating	CONT
Efficiency @ 100% Load	72.0 %
Electrically Isolated Bearing	Not Electrically Isolated
Feedback Device	NO FEEDBACK
Front Face Code	Standard
Front Shaft Indicator	None
Heater Indicator	No Heater

Part detail

Revision	K
Type	AC
Mech. spec.	34M811
Base	
Status	PRD/A
Elec. spec.	34WGW012
Layout	34LYM811
Eff. date	10-27-2022
CD Diagram	CD0005
Poles	06
Leads	9#18
Proprietary	False
Created date	04-20-2016

High Voltage Full Load Amps	1.3 a
Insulation Class	F
Inverter Code	Not Inverter
KVA Code	N
Lifting Lugs	No Lifting Lugs
Locked Bearing Indicator	Locked Bearing
Max Speed	1800 rpm
Motor Lead Exit	Ko Box
Motor Lead Quantity/Wire Size	9 @ 18 AWG
Motor Lead Termination	Flying Leads
Motor Standards	NEMA
Motor Type	3428M
Mounting Arrangement	F1
Number of Poles	6
Overall Length	12.85 IN
Power Factor	51
Product Family	Dirty Duty Plus
Pulley End Bearing Type	Sealed Bearing
Pulley Face Code	C-Face
Pulley Shaft Indicator	Standard
Rodent Screen	None
RoHS Status	ROHS COMPLIANT
Service Factor	1.25
Shaft Diameter	0.625 IN
Shaft Extension Location	Pulley End
Shaft Ground Indicator	No Shaft Grounding
Shaft Rotation	Reversible
Shaft Slinger Indicator	No Slinger
Speed	1140 rpm
Speed Code	Single Speed
Starting Method	Direct on line
Thermal Device - Bearing	None
Thermal Device - Winding	None
Vibration Sensor Indicator	No Vibration Sensor

Winding Thermal 1

None

Winding Thermal 2

None

Nameplate

NP3659	
CAT.NO.	CDM3539
SPEC.	34M811W012G1 ENCL TEFC
FRAME	56C H.P. .5
VOLTS	230/460
AMPS	2.6/1.3 IP 56
R.P.M.	1140
HZ.	60 PH. 3 CLASS F
SER.F.	1.25 DES. B CC
NEMA NOM. EFF.	72
RATING	40C AMB-CONT
DE	6203 ODE 6203
GREASE	POLYREX EM
SN	
	50C AT 1.0SF
	SFA 2.8/1.4

Parts list

Part number	Description	Quantity
SA320632	SA 34M811W012G1	1.000 ea
RA308363	RA 34M811W012G1	1.000 ea
NS2512A01	INSULATOR, CONDUIT BOX X	1.000 ea
34CB1000A01E	CONDUIT BOX, WASHDOWN, W/E-COATED	1.000 ea
34GS1017	GASKET, CONDUIT BOX MODEL 34 (BLACK NEOP	1.000 ea
51XB1016A07	10-16 X 7/16 HXWSSLD SERTYB	2.000 ea
11XW1032G06	10-32 X .38, TAPTITE II, HEX WSHR SLTD U	1.000 ea
34EP1100A137LP2	FRONT EP TEFC 203 BRG W/ SEAL	1.000 ea
HW4601B23	INPRO SEAL, 203 BRG, MINI66	1.000 ea
HW4500S33	1/8 NPT STAINLESS #304 SS PLUG	3.000 ea
HA4054	SHORT T-DRAIN FITTING, .125" N.P.T.	1.000 ea
HW5100A03	WAVY WASHER (W1543-017)	1.000 ea
34EP1300A35E	ENDPLATE, MACH W/E-COAT	1.000 ea
HW4606A01	JM CLIPPER/SEAL (WDE-0667-1064-BH49)	1.000 ea
HW4500S33	1/8 NPT STAINLESS #304 SS PLUG	3.000 ea
HA4054	SHORT T-DRAIN FITTING, .125" N.P.T.	1.000 ea
12XN1032S20	10-32 X 1-1/4 HEX M.S. , STAINLESS STEEL	2.000 ea
34FN3002A01SP	EXTERNAL FAN, PLASTIC, .637/.639 HUB W/	1.000 ea
34FH4002A01LP2	IEC FH NO GREASER	1.000 ea
11XW1032S06	10-32 X .38, TAPTITE II, HEX WSHR SLTD U	3.000 ea
34CB4500E	CONDUIT BOX LID, E-COAT	1.000 ea
34GS1007	GASKET, CONDUIT BOX LID MODEL 34 (BLACK	1.000 ea
59XW0832S07	TAPTITE II,HEX WSHR UNSLTD SER,410 S.S.,	4.000 ea
HW2502D13	SS KEY, 3/16 SQ X 1.375	1.000 ea
HA7000A04	KEY RETAINER 0.625 DIA SHAFTS	1.000 ea
MJ5001A02	732 CL SEALANT 3 OZ DIXIE BEARING 289100	0.001 ea
LB1164	LABEL,WARNING AND DRAIN	1.000 ea
MJ5001A23	P.D. GEORGE B-276 AIR DRY VARNISH	0.001 ga
LB1000	LABEL, DIRTY DUTY	1.000 ea
HW3001B02	BRASS CUP WASHER W/GROUND SYMBOL TAB,	1.000 ea
WD1000D21	TRM,T&B #B71M,RING,18-14,.25,NON-INSL	9.000 ea

85XU0407S04	4X1/4 U DRIVE PIN STAINLESS	2.000 ea
MG2000A17	RUST INHIBITOR PART # SRPO #20	0.001 ga
MG1025L01	WILKOFASFD, 786.04, BLACK	0.014 ga
MG1500Y02	WILKOPON PRIMER YELLOW	0.014 ga
HA3100S14	THRUBOLT 10X32 X 8.875 302 OR 303 SS	4.000 ea
MN416A01	TAG-INSTAL-MAINT no wire (2100bx)4/22	1.000 ea
LC0005	CONN.DIA.,TY M,9-LD,DUAL VOLT,REVERSING	1.000 ea
NP3659	SS DIRTY DUTY PLUS UL CSA-C US EEV CC	1.000 ea
36PA1000	PKG GRP, PRINT PK1016A06	1.000 ea

AC Induction Motor Performance Data

Record # 55849

Typical performance - not guaranteed values

Winding: 34WGW012-R037		Type: 3428M	Enclosure: TEFC		
Nameplate Data		460 V, 60 Hz: High Voltage Connection			
Rated Output (HP)	.5	Full Load Torque	2.32 LB-FT		
Volts	230/460	Start Configuration	direct on line		
Full Load Amps	2.6/1.3	Breakdown Torque	11.4 LB-FT		
R.P.M.	1140	Pull-up Torque	9.67 LB-FT		
Hz	60 Phase	3	Locked-rotor Torque	10.4 LB-FT	
NEMA Design Code	B	KVA Code	N	Starting Current	7.42 A
Service Factor (S.F.)	1.25	No-load Current	1.09 A		
NEMA Nom. Eff.	72	Power Factor	51	Line-line Res. @ 25°C	21.3 Ω
Rating - Duty	40C	AMB-CONT		Temp. Rise @ Rated Load	54°C
S.F. Amps	2.8/1.4			Temp. Rise @ S.F. Load	61°C
				Locked-rotor Power Factor	55.5
				Rotor inertia	0.0665 LB-FT ²

Load Characteristics 460 V, 60 Hz, 0.5 HP

% of Rated Load	25	50	75	100	125	150	S.F.
Power Factor	21	32	41	50	58	63	58
Efficiency	50.4	64.8	70.3	73.1	73.5	72.1	73.5
Speed	1188	1176	1162	1148	1131	1110	1131
Line amperes	1.11	1.15	1.21	1.29	1.4	1.53	1.4

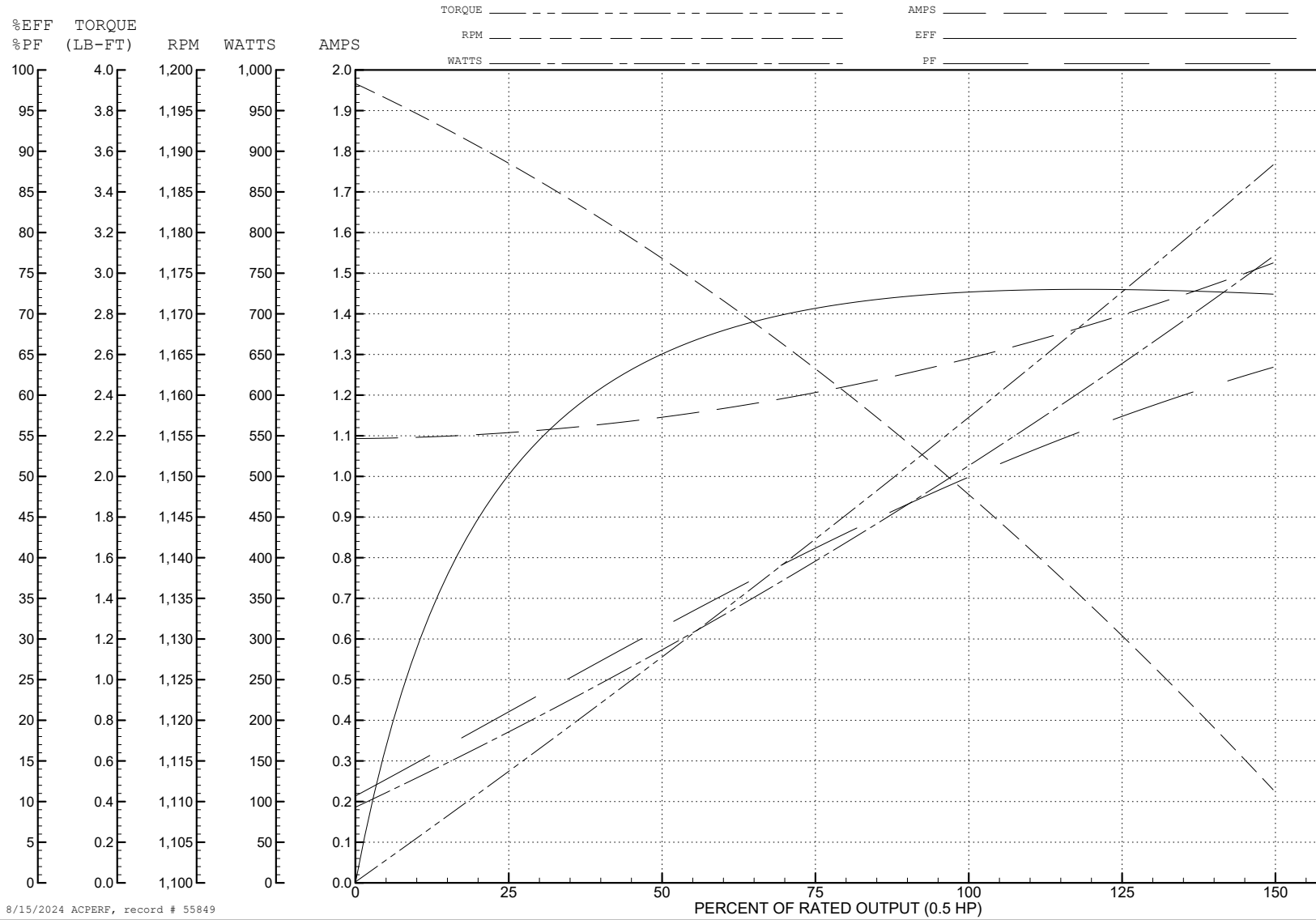
ABB Motors and Mechanical Inc.

WINDING # 34WGW012

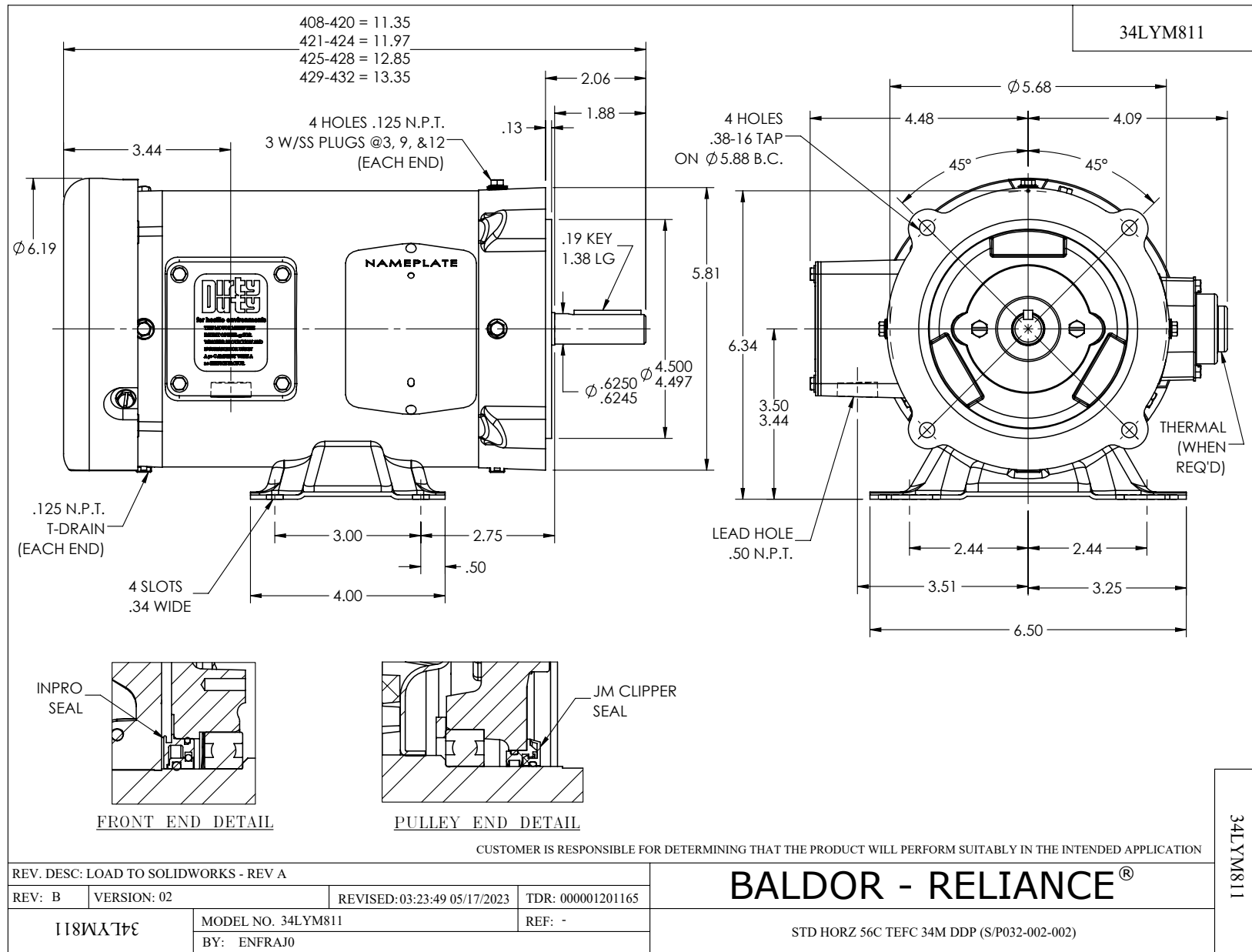
0.5 HP 3 PH 60 HZ 1140 RPM 460 V 3428M

Typical performance - not guaranteed values.

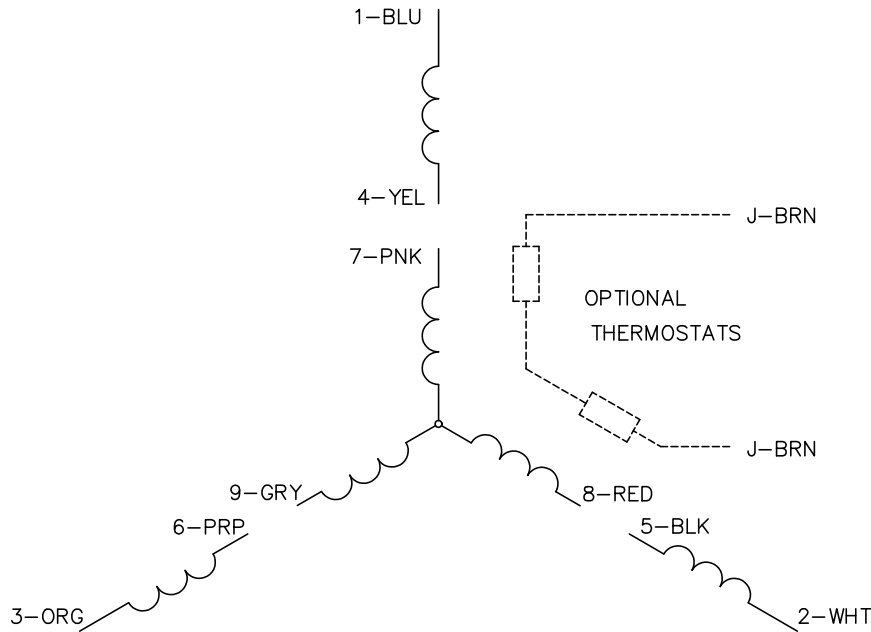
TORQUES (LB-FT): PO=11.4 PU=9.67 LR=10.4 LRA=7.42



8/15/2024 ACPERF, record # 55849



CD0005

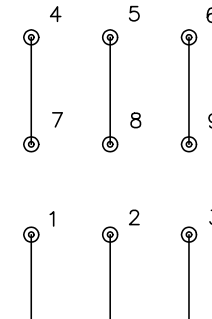


LOW VOLTAGE
(2Y)



LINE

HIGH VOLTAGE
(1Y)



LINE

NOTES:

1. INTERCHANGE ANY TWO LINE LEADS TO REVERSE ROTATION.
2. OPTIONAL THERMOSTATS ARE PROVIDED WHEN SPECIFIED.
3. ACTUAL NUMBER OF INTERNAL PARALLEL CIRCUITS MAY BE A MULTIPLE OF THOSE SHOWN ABOVE.
4. LEAD COLORS ARE OPTIONAL. LEADS MUST ALWAYS BE NUMBERED AS SHOWN.

REV. DESC: REVISE TO SHOW OPTIONAL COLORS			
REV. LTR: E	BY: JLP	REVISED: 01/19/99 10:15	TDR: 0171435
S00000		FILE: AAA00005140	MDL: -
		MTL: -	

BALDOR ELECTRIC Co.

3PH, DV, 9 LEADS

CD0005