



Customer information packet

CEM3769T-5

7.5HP, 3500RPM, 3PH, 60HZ, 213TC, 0724M, TEFC

Class - None

Division - Not Applicable

Specifications

| | |
|--------------------------------|---|
| Enclosure | TEFC |
| Frame | 213TC |
| Frame Material | Iron |
| Frequency | 60.00 Hz |
| Haz Area Class and Group | None |
| Haz Area Division | Not Applicable |
| Motor Letter Type | Three Phase |
| Output @ Frequency | 7.500 HP @ 60 HZ |
| Phase | 3 |
| Synchronous Speed @ Frequency | 3600 RPM @ 60 HZ |
| Voltage @ Frequency | 575.0 V @ 60 HZ |
| Agency Approvals | CURUSEEV NEMA PREMIUM NEMA_PREMIUM UR CSA EEV |
| Ambient Temperature | 40 °C |
| Auxiliary Box | NO AUXILLARY BOX |
| Auxiliary Box Lead Termination | None |
| Base Indicator | Rigid |
| Bearing Grease Type | Polyrex EM (-20F +300F) |
| Blower | None |
| Current @ Voltage | 7.400 A @ 575.0 V |
| Design Code | B |
| Drip Cover | No Drip Cover |
| Duty Rating | CONT |
| Efficiency @ 100% Load | 89.5 % |
| Electrically Isolated Bearing | Not Electrically Isolated |
| Feedback Device | NO FEEDBACK |
| Front Face Code | Standard |
| Front Shaft Indicator | None |
| Heater Indicator | No Heater |

Part detail

| | |
|--------------|------------|
| Revision | P |
| Type | AC |
| Mech. spec. | 07H058 |
| Base | |
| Status | PRD/A |
| Elec. spec. | 07WGY363 |
| Layout | 07LYH058 |
| Eff. date | 10-17-2024 |
| CD Diagram | CD0006 |
| Poles | 02 |
| Leads | 3#14 |
| Proprietary | False |
| Created date | 09-24-2012 |

| | |
|-------------------------------|-----------------------|
| High Voltage Full Load Amps | 7.4 a |
| Insulation Class | F |
| Inverter Code | Inverter Ready |
| KVA Code | H |
| Lifting Lugs | Standard Lifting Lugs |
| Locked Bearing Indicator | Locked Bearing |
| Motor Lead Exit | Ko Box |
| Motor Lead Quantity/Wire Size | 3 @ 14 AWG |
| Motor Lead Termination | Flying Leads |
| Motor Standards | NEMA |
| Motor Type | 0724M |
| Mounting Arrangement | F1 |
| Number of Poles | 2 |
| Overall Length | 19.20 IN |
| Power Factor | 84 |
| Product Family | General Purpose |
| Pulley End Bearing Type | Ball |
| Pulley Face Code | C-Face |
| Pulley Shaft Indicator | Standard |
| Rodent Screen | None |
| Service Factor | 1.15 |
| Shaft Diameter | 1.375 IN |
| Shaft Extension Location | Pulley End |
| Shaft Ground Indicator | No Shaft Grounding |
| Shaft Rotation | Reversible |
| Shaft Slinger Indicator | No Slinger |
| Speed | 3500 rpm |
| Speed Code | Single Speed |
| Starting Method | Direct on line |
| Thermal Device - Bearing | None |
| Thermal Device - Winding | None |
| Vibration Sensor Indicator | No Vibration Sensor |
| Winding Thermal 1 | None |
| Winding Thermal 2 | None |

Nameplate**NP3441L**

| | | | | | | | |
|---------------------|--------------|-------------|------------|------------|---|-----------|---|
| CAT.NO. | CEM3769T-5 | | | | | | |
| SPEC. | 07H058Y363G1 | | | | | | |
| HP | 7.5 | | | | | | |
| VOLTS | 575 | | | | | | |
| AMP | 7.4 | | | | | | |
| RPM | 3500 | | | | | | |
| FRAME | 213TC | | HZ | 60 | | PH | 3 |
| SER.F. | 1.15 | CODE | H | DES | B | CL | F |
| NEMA-NOM-EFF | 89.5 | PF | 84 | | | | |
| RATING | 40C AMB-CONT | | | | | | |
| CC | 010A | | | | | | |
| DE | 6307 | | ODE | 6206 | | | |
| ENCL | TEFC | SN | | | | | |

VPWM INVERTER READY**CT6-60H(10:1)VT3-60H(20:1)**

Parts list

| Part number | Description | Quantity |
|---------------|--|----------|
| SA251649 | SA 07H058Y363G1 | 1.000 ea |
| RA238486 | RA 07H058Y363G1 | 1.000 ea |
| 36FN3000C02SP | EXFN, PLASTIC, 5.25 OD, 1.175 ID | 1.000 ea |
| HW3201A05 | 3/8-16 EYEBOLT | 1.000 ea |
| 09CB3002SP | CB W/1.38 LEAD HOLE FOR 37, 39, 307 & 30 | 1.000 ea |
| 09GS1000 | GASKET-CONDUIT BOX, 1/16 THICK LEXIDE | 1.000 ea |
| 51XW2520A12 | .25-20 X .75, TAPTITE II, HEX WSHR SLTD | 2.000 ea |
| 59XW2520G07 | .25-20X.44,HEX SER WSHR,TAPTITE 2,GREEN | 1.000 ea |
| 37EP1100A41 | FR ENDPLATE MACH FOR GREASER & RELIEF | 1.000 ea |
| HW4500A17 | 317400 ALEMITE GREASE RELIEF | 1.000 ea |
| HW4500A01 | 1641B(ALEMITE)400 UNIV, GREASE FITT | 1.000 ea |
| HW5100A06 | W2420-025 WVY WSHR (WB) | 1.000 ea |
| 37EP1300A10 | FACE MTD EP,307BRG,213-5TC,GRSR,RELIEF & | 1.000 ea |
| HW4500A17 | 317400 ALEMITE GREASE RELIEF | 1.000 ea |
| HW4500A01 | 1641B(ALEMITE)400 UNIV, GREASE FITT | 1.000 ea |
| 10XN2520A30 | HEX HD CAP SCREW-STD THD-.25 X 20 THD PE | 4.000 ea |
| HW1001A25 | LOCKWASHER 1/4, ZINC PLT .493 OD, .255 I | 4.000 ea |
| XY3118A12 | 5/16-18 HEX NUT DIRECTIONAL SERRATION | 4.000 ea |
| 51XB1214A20 | 12-14X1.25 HXWSSLD SERTYB | 1.000 ea |
| 07FH4007SP | PRIMED | 1.000 ea |
| 51XW1032A06 | 10-32 X .38, TAPTITE II, HEX WSHR SLTD S | 3.000 ea |
| 09CB3501SP | CONDUIT BOX LID FOR 09CB3001 & 09CB3002 | 1.000 ea |
| 09GS1013SP | GS FOR 09CB3501, 12CB1500 & 12CB1503 LID | 1.000 ea |
| 51XW2520A12 | .25-20 X .75, TAPTITE II, HEX WSHR SLTD | 2.000 ea |
| HW2501F21 | KEY, 5/16 SQ X 2.375 | 1.000 ea |
| HA7000A02 | KEY RETAINER RING, 1 1/8 DIA, 1 3/8 DIA | 1.000 ea |
| 85XU0407S04 | 4X1/4 U DRIVE PIN STAINLESS | 2.000 ea |
| LB1624 | COMBINED WARNING LABEL, ISO/ANSI PICTOGR | 1.000 ea |
| MJ1000A02 | GREASE, POLYREX EM EXXON | 0.050 lb |
| HA3104A32 | THRUBOLT- 5/16-18 X12.750 | 4.000 ea |
| MG1050Y01 | CELEROL BALDOR GOLD *5 GALLON BUCKET* | 0.036 ga |

| | | |
|------------|---|----------|
| LC0006 | CONNECTION LABEL | 1.000 ea |
| NP3441L | ALUM SUPER-E VPWM INVERTER READY UL EEV | 1.000 ea |
| 07PA1011 | PKG GRP, 07 CAST IRON PK1181 | 1.000 ea |
| MN416A01 | TAG-INSTAL-MAINT no wire (2500 bx)11/22 | 1.000 ea |
| FE-0000001 | ZRTG FE ASSEMBLY | 1.000 ea |
| PE-0000001 | ZRTG PE ASSEMBLY | 1.000 ea |

AC Induction Motor Performance Data

Record # 39891

Typical performance - not guaranteed values

| Winding: 07WGY363-R001 | | Type: 0724M | | Enclosure: TEFC | |
|-------------------------------|--------------|----------------------------------|---|------------------------|--|
| Nameplate Data | | | 575 V, 60 Hz: Single Voltage Motor | | |
| Rated Output (HP) | 7.5 | Full Load Torque | 11.2 LB-FT | | |
| Volts | 575 | Start Configuration | direct on line | | |
| Full Load Amps | 7.4 | Breakdown Torque | 49.3 LB-FT | | |
| R.P.M. | 3500 | Pull-up Torque | 14.5 LB-FT | | |
| Hz | 60 | Locked-rotor Torque | 20.6 LB-FT | | |
| NEMA Design Code | B | Starting Current | 50.9 A | | |
| Service Factor (S.F.) | 1.15 | No-load Current | 3.01 A | | |
| NEMA Nom. Eff. | 0 | Line-line Res. @ 25°C | 1.89 Ω | | |
| Rating - Duty | 40C AMB-CONT | Temp. Rise @ Rated Load | 47°C | | |
| S.F. Amps | | Temp. Rise @ S.F. Load | 57°C | | |
| | | Locked-rotor Power Factor | 34 | | |
| | | Rotor inertia | 0.219 LB-FT ² | | |

Load Characteristics 575 V, 60 Hz, 7.5 HP

| % of Rated Load | 25 | 50 | 75 | 100 | 125 | 150 | S.F. |
|------------------------|-----------|-----------|-----------|------------|------------|------------|-------------|
| Power Factor | 48 | 69 | 79 | 84 | 86 | 87 | 85 |
| Efficiency | 83.4 | 89.2 | 90.5 | 90 | 89.4 | 88.6 | 89.6 |
| Speed | 3574 | 3552 | 3527 | 3501 | 3474 | 3443 | 3485 |
| Line amperes | 3.48 | 4.51 | 5.87 | 7.36 | 9.06 | 10.9 | 8.38 |

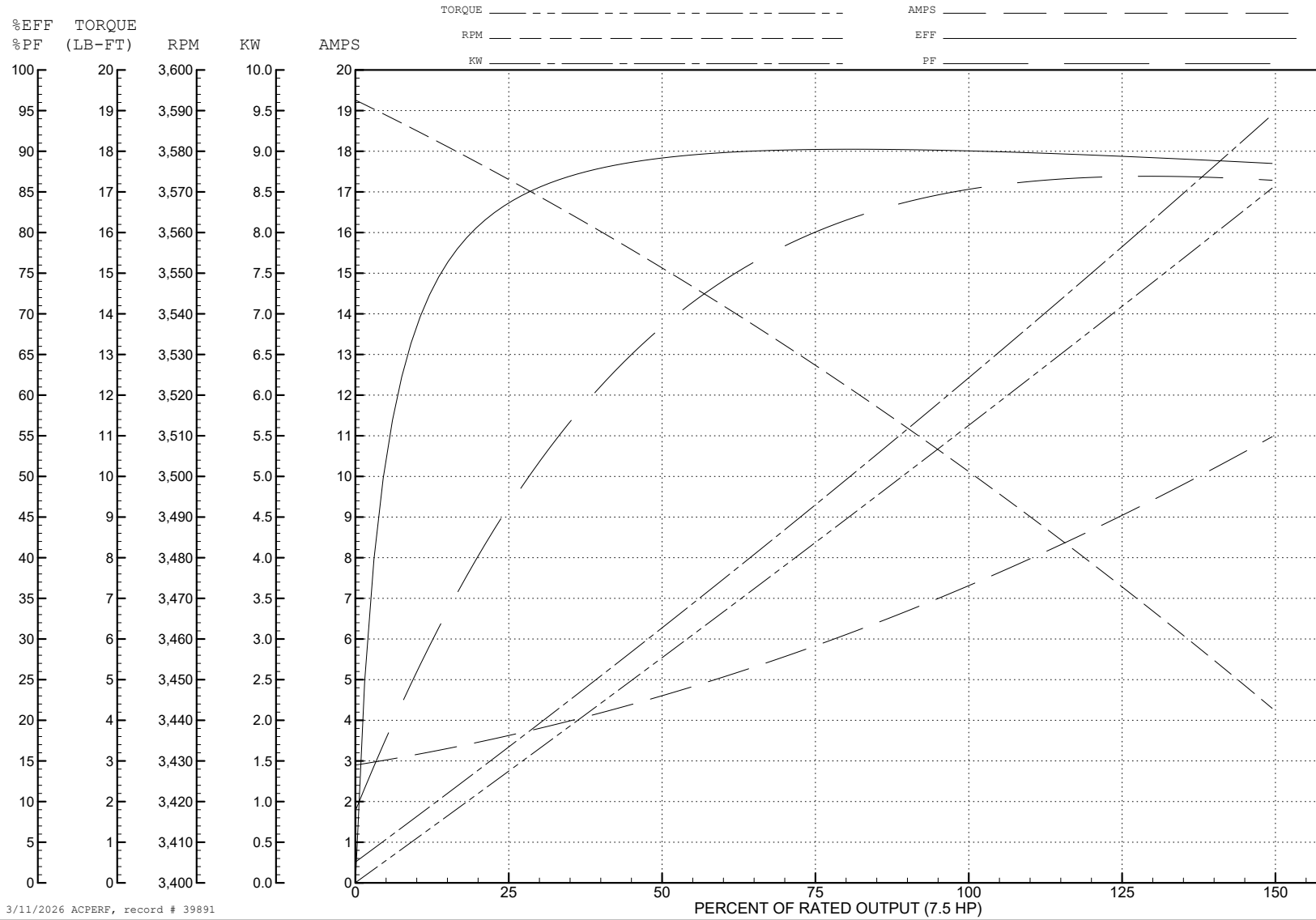
ABB Motors and Mechanical Inc.

WINDING # 07WGY363

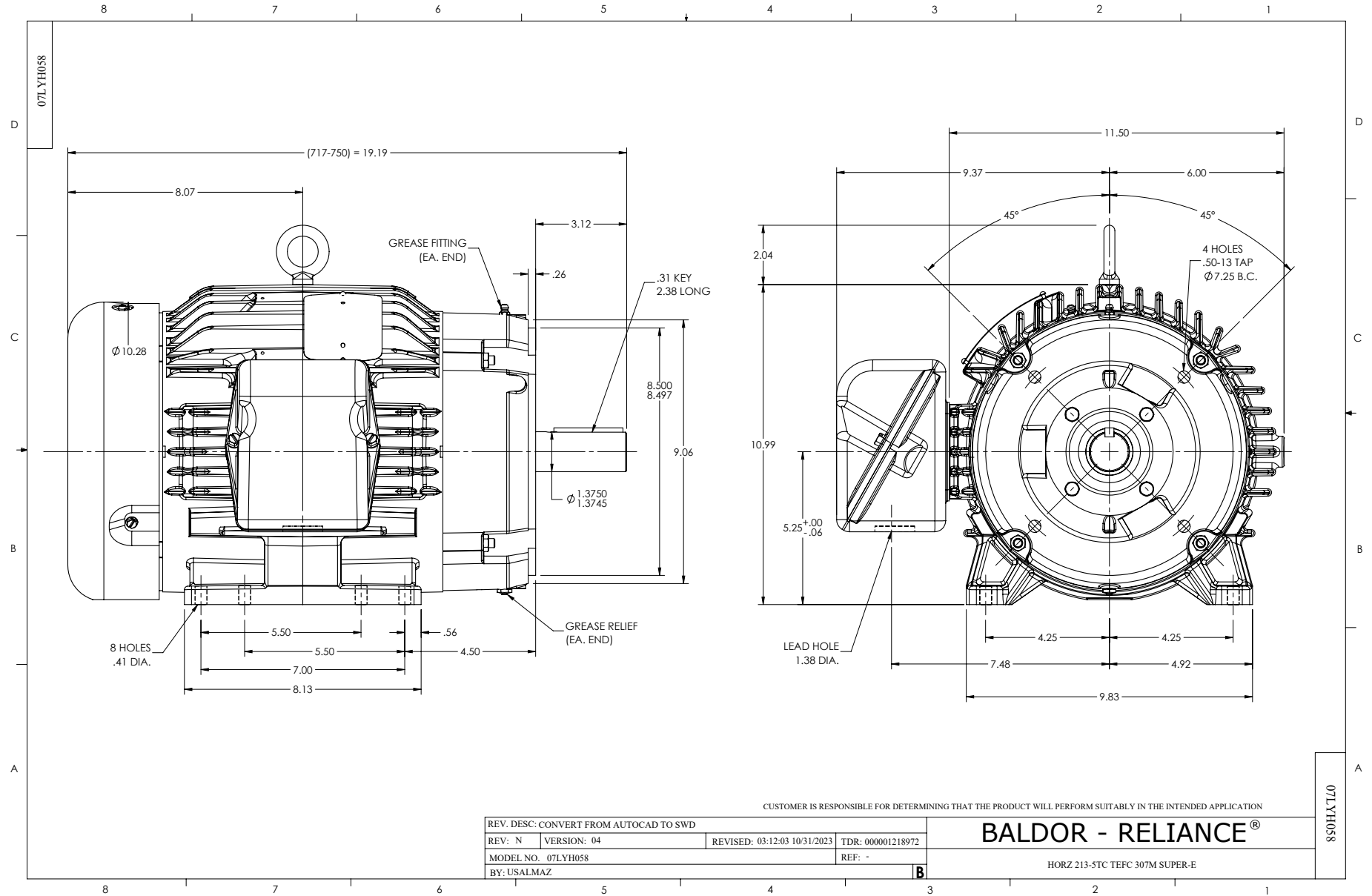
Typical performance - not guaranteed values.

7.5 HP 3 PH 60 HZ 3500 RPM 575 V 0724M

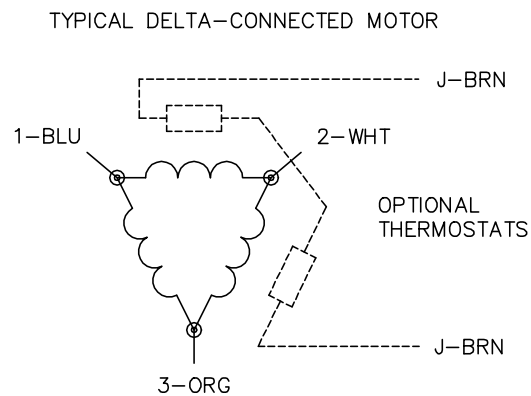
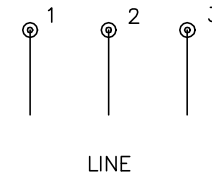
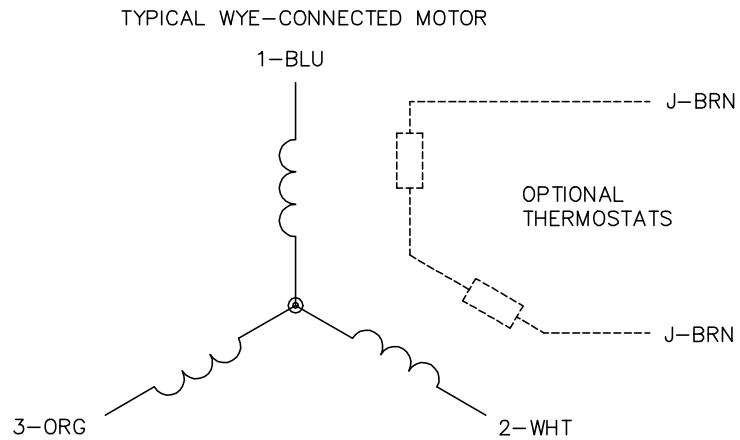
TORQUES (LB-FT): PO=49.3 PU=14.5 LR=20.6 LRA=50.9



3/11/2026 ACPERF, record # 39891



CD0006



NOTES:

1. THREE LEAD MOTOR MAY BE EITHER WYE CONNECTED OR DELTA CONNECTED.
2. INTERCHANGE ANY TWO LINE LEADS TO REVERSE ROTATION.
3. OPTIONAL THERMOSTATS ARE PROVIDED WHEN SPECIFIED.
4. ACTUAL NUMBER OF INTERNAL PARALLEL CIRCUITS MAY VARY.
5. LEAD COLORS ARE OPTIONAL. LEADS MUST BE NUMBERED AS SHOWN.

CD0006

| | | |
|-----------------------------------|------------------------------|-------------------|
| REV. DESC: ADD CLASS CONN00000007 | | |
| REV. LTR: E | VERSION: 01 | TDR: 000001099922 |
| FILE: \AAA\00005\141 | REVISED: 10:24:49 02/19/2019 | BY: ENBRIRO |
| MTL: - | © □ | |

BALDOR - RELIANCE®

3PH, SV, 3 LEADS, WYE OR DELTA CONNECTED

SH 1 of 1