

# ABB BALDOR RELIANCE III

---

## Customer information packet

### CESSWDM3550T

1.5HP, 3500RPM, 3PH, 60HZ, 143TC, 3532M, TENV

Class - None

Division - Not Applicable

**Specifications**

|                                       |   |
|---------------------------------------|---|
| <b>Enclosure</b>                      | TENV  |
| <b>Frame</b>                          | 143TC   |
| <b>Frame Material</b>                 | Stainless Steel   |
| <b>Frequency</b>                      | 60.00 Hz  |
| <b>Haz Area Class and Group</b>       | None  |
| <b>Haz Area Division</b>              | Not Applicable  |
| <b>Motor Letter Type</b>              | Three Phase   |
| <b>Output @ Frequency</b>             | 1.500 HP @ 60 HZ  |
| <b>Phase</b>                          | 3   |
| <b>Synchronous Speed @ Frequency</b>  | 3600 RPM @ 60 HZ  |
| <b>Voltage @ Frequency</b>            | 460.0 V @ 60 HZ<br>230.0 V @ 60 HZ<br>208.0 V @ 60 HZ       |
| <b>Agency Approvals</b>               | CSA<br>UR   |
| <b>Ambient Temperature</b>            | 40 °C   |
| <b>Auxiliary Box</b>                  | NO AUXILLARY BOX  |
| <b>Auxiliary Box Lead Termination</b> | None  |
| <b>Base Indicator</b>                 | Rigid   |
| <b>Bearing Grease Type</b>            | Polyrex EM (-20F +300F)                                     |
| <b>Blower</b>                         | None  |
| <b>Current @ Voltage</b>              | 3.700 A @ 208.0 V<br>3.600 A @ 230.0 V<br>1.800 A @ 460.0 V |
| <b>Design Code</b>                    | B   |
| <b>Drip Cover</b>                     | No Drip Cover   |
| <b>Duty Rating</b>                    | CONT  |
| <b>Efficiency @ 100% Load</b>         | 85.5 %  |
| <b>Electrically Isolated Bearing</b>  | Not Electrically Isolated                                   |
| <b>Feedback Device</b>                | NO FEEDBACK   |
| <b>Front Face Code</b>                | Standard  |
| <b>Front Shaft Indicator</b>          | None  |

**Part Detail**

|                     |            |
|---------------------|------------|
| <b>Revision</b>     | U          |
| <b>Type</b>         | AC         |
| <b>Mech. spec.</b>  | 35WW513    |
| <b>Base</b>         |            |
| <b>Status</b>       | PRD/A      |
| <b>Elec. spec.</b>  | 35WGR929   |
| <b>Layout</b>       | 35LYWW513  |
| <b>Eff. date</b>    | 06-14-2024 |
| <b>CD Diagram</b>   | CD0005     |
| <b>Poles</b>        | 02         |
| <b>Leads</b>        | 9#18       |
| <b>Proprietary</b>  | False      |
| <b>Created date</b> | 02-17-2010 |

|                                      |                               |
|--------------------------------------|-------------------------------|
| <b>Heater Indicator</b>              | No Heater                     |
| <b>High Voltage Full Load Amps</b>   | 1.8 a                         |
| <b>Insulation Class</b>              | F                             |
| <b>Inverter Code</b>                 | Inverter Ready                |
| <b>KVA Code</b>                      | M                             |
| <b>Lifting Lugs</b>                  | No Lifting Lugs               |
| <b>Locked Bearing Indicator</b>      | Locked Bearing                |
| <b>Motor Lead Exit</b>               | Ko Box                        |
| <b>Motor Lead Quantity/Wire Size</b> | 9 @ 18 AWG                    |
| <b>Motor Lead Termination</b>        | Flying Leads                  |
| <b>Motor Standards</b>               | NEMA                          |
| <b>Motor Type</b>                    | 3532M                         |
| <b>Mounting Arrangement</b>          | F1                            |
| <b>Number of Poles</b>               | 2                             |
| <b>Overall Length</b>                | 13.23 IN                      |
| <b>Power Factor</b>                  | 90                            |
| <b>Product Family</b>                | Wash Down All Stainless Steel |
| <b>Pulley End Bearing Type</b>       | Sealed Bearing                |
| <b>Pulley Face Code</b>              | C-Face                        |
| <b>Pulley Shaft Indicator</b>        | Standard                      |
| <b>Rodent Screen</b>                 | None                          |
| <b>Service Factor</b>                | 1.15                          |
| <b>Shaft Diameter</b>                | 0.875 IN                      |
| <b>Shaft Extension Location</b>      | Pulley End                    |
| <b>Shaft Ground Indicator</b>        | No Shaft Grounding            |
| <b>Shaft Rotation</b>                | Reversible                    |
| <b>Shaft Slinger Indicator</b>       | No Slinger                    |
| <b>Speed</b>                         | 3500 rpm                      |
| <b>Speed Code</b>                    | Single Speed                  |
| <b>Starting Method</b>               | Direct on line                |
| <b>Thermal Device - Bearing</b>      | None                          |
| <b>Thermal Device - Winding</b>      | None                          |
| <b>Vibration Sensor Indicator</b>    | No Vibration Sensor           |
| <b>Winding Thermal 1</b>             | None                          |

**Winding Thermal 2**

**None**

---

**Nameplate**

**NP1953A01**

|                     |               |             |           |            |   |              |           |   |  |  |
|---------------------|---------------|-------------|-----------|------------|---|--------------|-----------|---|--|--|
| <b>CAT.NO.</b>      | CESSWDM3550T  |             |           |            |   |              |           |   |  |  |
| <b>SPEC.</b>        | 35WW513R929G1 |             |           |            |   |              |           |   |  |  |
| <b>HP</b>           | 1.5           |             |           |            |   |              |           |   |  |  |
| <b>VOLTS</b>        | 230/460       |             |           |            |   |              |           |   |  |  |
| <b>AMP</b>          | 3.6/1.8       |             |           |            |   |              |           |   |  |  |
| <b>RPM</b>          | 3500          |             |           |            |   |              |           |   |  |  |
| <b>FRAME</b>        | 143TC         |             | <b>HZ</b> | 60         |   |              | <b>PH</b> | 3 |  |  |
| <b>SER.F.</b>       | 1.15          | <b>CODE</b> | M         | <b>DES</b> | B | <b>CLASS</b> | F         |   |  |  |
| <b>NEMA-NOM-EFF</b> | 85.5          | <b>PF</b>   | 90        |            |   |              |           |   |  |  |
| <b>RATING</b>       | 40C AMB-CONT  |             |           |            |   |              |           |   |  |  |
| <b>CC</b>           |               |             |           |            |   |              |           |   |  |  |
| <b>DE</b>           | 6205          | <b>ODE</b>  | 6203      |            |   |              |           |   |  |  |
| <b>ENCL</b>         | TENV          | <b>SN</b>   |           |            |   |              |           |   |  |  |
|                     | 4:1CT 20:1VT  |             |           |            |   |              |           |   |  |  |

**Parts List**

| <b>Part number</b> | <b>Description</b>                       | <b>Quantity</b> |
|--------------------|--|-----------------|
| SA191052           | SA 35WW513R929G1                         | 1.000 ea        |
| RA178716           | RA 35WW513R929G1                         | 1.000 ea        |
| NS2512A01          | INSULATOR, CONDUIT BOX X                 | 1.000 ea        |
| 35CB5001A17        | KOBX KIT, (ALL STAINLESS) W/ .75 NPT     | 1.000 ea        |
| HA5027A02          | HA4054 T-DRAIN X2 BAGGED WITH LABEL      | 1.000 ea        |
| 11XW1032G06        | 10-32 X .38, TAPTITE II, HEX WSHR SLTD U | 1.000 ea        |
| 35EP1913A01        | FRONT TENV 203 BRG NO GRSR S/P 9-2 (STAI | 1.000 ea        |
| HW4500S33          | 1/8 NPT STAINLESS #304 SS PLUG           | 3.000 ea        |
| HW5100A03          | WAVY WASHER (W1543-017)                  | 1.000 ea        |
| 35EP1914A02        | PU EP FOR LOCKED 6205 BRG                | 1.000 ea        |
| HW4500S33          | 1/8 NPT STAINLESS #304 SS PLUG           | 3.000 ea        |
| 12XN1032S22        | 10-32 X 1 3/8 SLOT HEX, STAINLESS STEEL  | 2.000 ea        |
| HA1049A01          | DUBO LOK WASHER SIZE 10 (NYLON LOCK SEAL | 2.000 ea        |
| HA1049A01          | DUBO LOK WASHER SIZE 10 (NYLON LOCK SEAL | 4.000 ea        |
| HW4606A02          | JM CLIPPER/SEAL (LWE-0938-1624-AL23)     | 1.000 ea        |
| HW2502D13          | SS KEY, 3/16 SQ X 1.375                  | 1.000 ea        |
| HA7000A01          | KEY RETAINER 7/8" DIA SHAFT              | 1.000 ea        |
| MJ5001A02          | 732 CL SEALANT 3 OZ DIXIE BEARING 289100 | 0.001 ea        |
| MJ1000A02          | GREASE, POLYREX EM EXXON                 | 0.050 lb        |
| HW3001B01          | BRASS CUP WASHER, FOR #10 SCREW          | 1.000 ea        |
| HA3100S19          | THRUBOLT,10X32 - 9.812 SS                | 4.000 ea        |
| 36PA1000           | PKG GRP, PRINT PK1016A08                 | 1.000 ea        |
| MN416A01           | TAG-INSTAL-MAINT no wire (2500 bx)11/25  | 1.000 ea        |
| FE-0000007         | ZRTG FE ASSEMBLY                         | 1.000 ea        |
| PE-0000012         | ZRTG PE ASSEMBLY                         | 1.000 ea        |

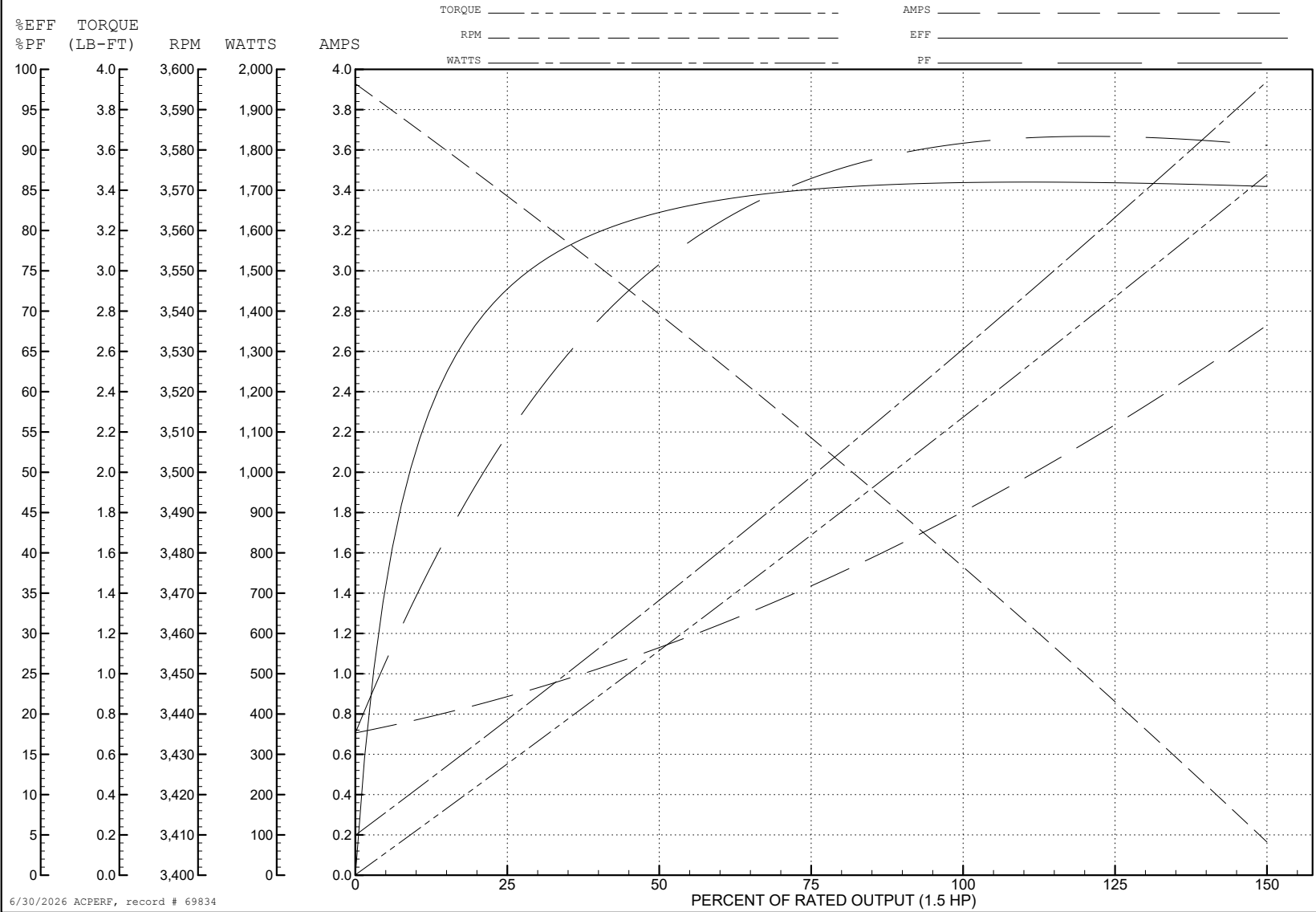
ABB Motors and Mechanical Inc.

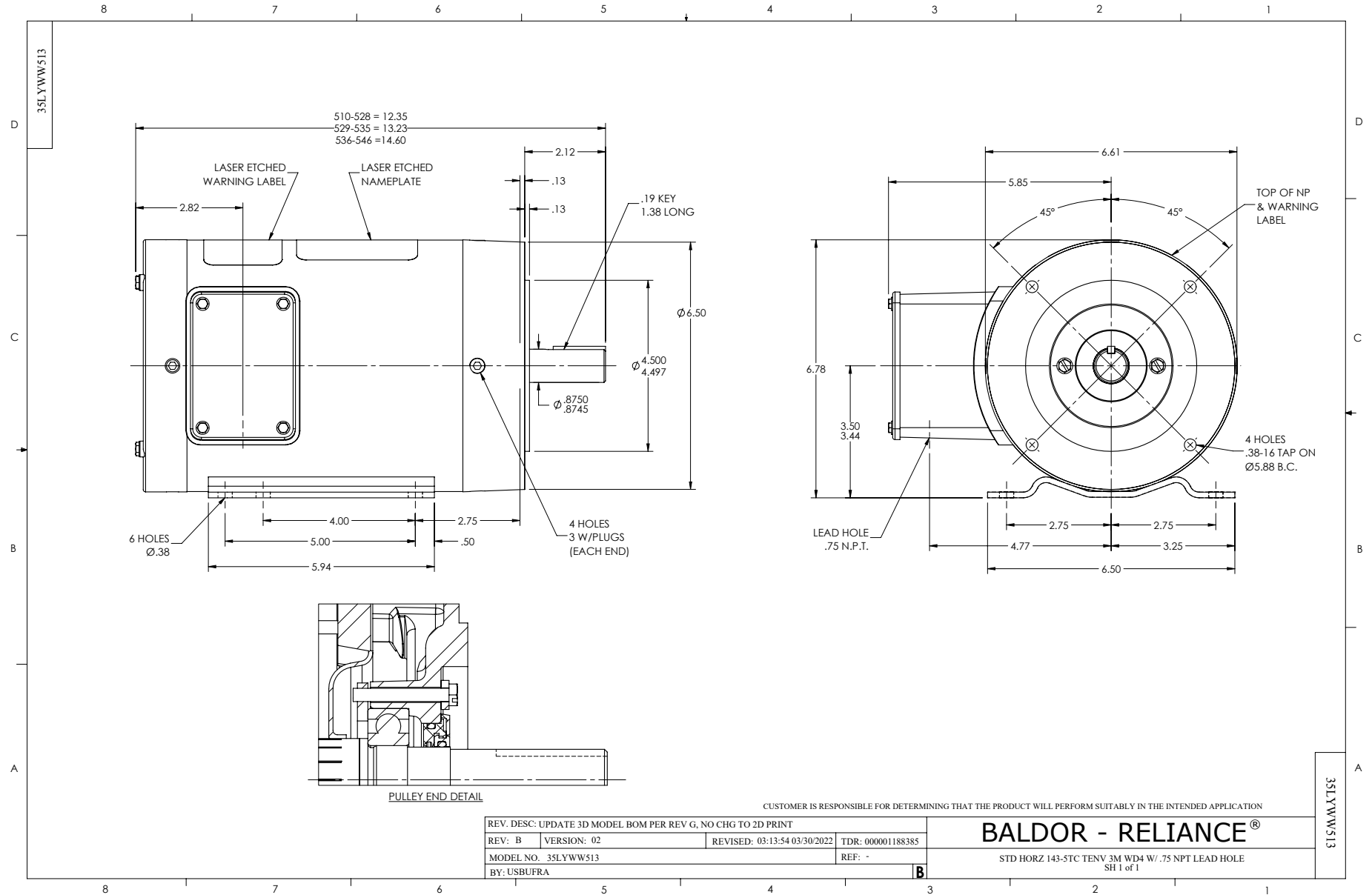
WINDING # 35WGR929

1.5 HP 3 PH 60 HZ 3500 RPM 460 V 3532M

Typical performance - not guaranteed values.

TORQUES (LB-FT): PO=10.9 PU=5.2 LR=10.2 LRA=20.6





CD0005



LOW VOLTAGE  
(2Y)



LINE

HIGH VOLTAGE  
(1Y)



LINE

NOTES:

1. INTERCHANGE ANY TWO LINE LEADS TO REVERSE ROTATION.
2. OPTIONAL THERMOSTATS ARE PROVIDED WHEN SPECIFIED.
3. ACTUAL NUMBER OF INTERNAL PARALLEL CIRCUITS MAY BE A MULTIPLE OF THOSE SHOWN ABOVE.
4. LEAD COLORS ARE OPTIONAL. LEADS MUST ALWAYS BE NUMBERED AS SHOWN.

CD0005

REV. DESC: REVISE TO SHOW OPTIONAL COLORS

REV. LTR: E BY: JLP REVISED: 01/19/99 10:15 TDR: 0171435

500000

FILE: AAA00005140

MDL: -

MTL: -

**BALDOR ELECTRIC Co.**

3PH, DV, 9 LEADS