



---

# Customer information packet

## CEWDBM3615T

5HP, 1750RPM, 3PH, 60HZ, 184TC, 3642M, TEFC, F1

Class - None

Division - Not Applicable

## Specifications

Enclosure	TEFC
Frame	184TC
Frame Material	Steel
Frequency	60.00 Hz
Haz Area Class and Group	None
Haz Area Division	Not Applicable
Motor Letter Type	Three Phase
Output @ Frequency	5.000 HP @ 60 HZ
Phase	3
Synchronous Speed @ Frequency	1800 RPM @ 60 HZ
Voltage @ Frequency	460.0 V @ 60 HZ 230.0 V @ 60 HZ
Agency Approvals	NEMA PREMIUM NEMA_PREMIUM UR CSA EEV
Ambient Temperature	40 °C
Auxillary Box	No Auxillary Box
Auxillary Box Lead Termination	None
Base Indicator	Rigid
Bearing Grease Type	Polyrex EM (-20F +300F)
Blower	None
Brake Torque	25.0 lb-ft
Current @ Voltage	13.900 A @ 208.0 V 6.700 A @ 460.0 V 13.400 A @ 230.0 V
Design Code	B
Drip Cover	No Drip Cover
Duty Rating	CONT
Efficiency @ 100% Load	89.5 %
Electrically Isolated Bearing	Not Electrically Isolated
Feedback Device	NO FEEDBACK

## Part detail

Revision	N
Type	AC
Mech. spec.	36G566
Base	
Status	PRD/A
Elec. spec.	36WGS268
Layout	36LYG566
Eff. date	02-14-2024
CD Diagram	CD0005
Poles	04
Leads	9#16
Proprietary	False
Created date	08-04-2010

Front Face Code	C-Face
Front Shaft Indicator	None
Heater Indicator	No Heater
High Voltage Full Load Amps	6.7 a
Insulation Class	F
Inverter Code	Inverter Ready
KVA Code	J
Lifting Lugs	Standard Lifting Lugs
Locked Bearing Indicator	Locked Bearing
Motor Lead Exit	Ko Box
Motor Lead Quantity/Wire Size	9 @ 16 AWG
Motor Lead Termination	Flying Leads
Motor Standards	NEMA
Motor Type	3642M
Mounting Arrangement	F1
Number of Poles	4
Overall Length	23.30 IN
Power Factor	78
Product Family	Wash Down
Pulley End Bearing Type	Sealed Bearing
Pulley Face Code	C-Face
Pulley Shaft Indicator	Standard
Rodent Screen	None
Service Factor	1.15
Shaft Diameter	1.125 IN
Shaft Extension Location	Pulley End
Shaft Ground Indicator	No Shaft Grounding
Shaft Rotation	Reversible
Shaft Slinger Indicator	Shaft Slinger
Speed	1750 rpm
Speed Code	Single Speed
Starting Method	Direct on line
Thermal Device - Bearing	None
Thermal Device - Winding	None

<b>Vibration Sensor Indicator</b>	<b>No Vibration Sensor</b>
<b>Winding Thermal 1</b>	<b>None</b>
<b>Winding Thermal 2</b>	<b>None</b>

**Nameplate**

<b>NP1669L</b>									
<b>CAT.NO.</b>	CEWDBM3615T								
<b>SPEC.</b>	36G566S268G1								
<b>HP</b>	5								
<b>VOLTS</b>	230/460								
<b>AMP</b>	13.4/6.7								
<b>RPM</b>	1750								
<b>FRAME</b>	184TC		<b>HZ</b>	60		<b>PH</b>	3		
<b>SER.F.</b>	1.15	<b>CODE</b>	J	<b>DES</b>	B	<b>CLASS</b>	F		
<b>NEMA-NOM-EFF</b>	89.5	<b>PF</b>	78						
<b>RATING</b>	40C AMB-CONT								
<b>CC</b>	010A								
<b>DE</b>	6206		<b>ODE</b>	6205					
<b>ENCL</b>	TEFC	<b>SN</b>							
<b>BLANK</b>									

## Parts list

Part number	Description	Quantity
SA200979	SA 36G566S268G1	1.000 ea
RA188284	RA 36G566S268G1	1.000 ea
36CB3005A03W	36 CB .75 NPT @ 6 W/WHITE EPOXY	1.000 ea
35GS1022A03	GASKET BOX .125 THK WHITE NEOPRENE	1.000 ea
51XB1016A08	10-16X 1/2HXWSSLD SERTYB	2.000 ea
11XW1032G06	10-32 X .38, TAPTITE II, HEX WSHR SLTD U	1.000 ea
36EP1303A55MW	FACE 36M WASHDOWN DRILLED W/WHITE EPOXY	1.000 ea
HW4032A01	BLACK DRAIN PLUG FOR WASH DOWN MOTORS	3.000 ea
HW5100A05	WVY WSHR F/205 & 304 BRGS	1.000 ea
36PE3301A27MW	PUEP ASSEMBLY FOR ROUTING PURPOSES	1.000 ea
HW4032A01	BLACK DRAIN PLUG FOR WASH DOWN MOTORS	3.000 ea
HW4600B50	SEAL 1.156 X 1.874 X 0.250 SINGLE LIP DB	1.000 ea
10XN2520S26	1/4-20X 1 5/8 HEX HD SS	4.000 ea
HW2502D08	KEY, 3/16 X .875 SS	1.000 ea
51XB1214A16	12-14X1.00 HXWSSLD SERTYB	1.000 ea
35FH4005A32W	FAN COVER MODEL 35 VERT. MOTORS W/WHITE	1.000 ea
10XN1032S06	HEX HD CAP SCREW, SS	3.000 ea
HA1014A05	SPACER FOR FAN COVER MTD ON BRAKE (#304	3.000 ea
11XB1016S08	10-16 X 1/2 HEX WASHER SLOTTED TYPE B	3.000 ea
HW4600B36SP	V-RING SLINGER 1.188 X 1.690 X .24 VITON	1.000 ea
36CB4518	36 LIPPED CB LID PRIMED	1.000 ea
37GS3010SP	1/16"WHITE LID GASKET	1.000 ea
59XW0832S07	TAPTITE II,HEX WSHR UNSLTD SER,410 S.S.,	4.000 ea
HW2502E16	#303 SS,SQ KEY 1/4 X 1.750	1.000 ea
HA7000A02	KEY RETAINER RING, 1 1/8 DIA, 1 3/8 DIA	1.000 ea
MJ5001A27	32220KN GRAY SEALER *MIN BUY 4 QTS=1GAL	0.001 qt
LB1164	LABEL,WARNING AND DRAIN	1.000 ea
85XU0407S04	4X1/4 U DRIVE PIN STAINLESS	2.000 ea
HA5027A01	HA4066A01 T-DRAIN X2 BAGGED	1.000 ea
HW3200A01	3/8-16X3/4 EYEBOLT WELDED F/S	1.000 ea
MJ1000A02	GREASE, POLYREX EM EXXON	0.050 lb

35FN3002A05SP	EXFN, PLASTIC, 6.376 OD, .638 ID	1.000 ea
MG1025Z02	ACTIVATOR WILKOFAS 060.02HF	0.010 ga
MG1025W01	WILKOFAS, 781.01, SIGNAL WHITE #9003	0.022 ga
75BK6406DQF	1-056-164-06-DQF BRAKE	1.000 ea
84XN3816J36	3/8-16X2-1/4 SOCK HD, BK OX	4.000 ea
HA3101S29	THRUBOLT- 1/4-20X13.00 SS	4.000 ea
LB1624	COMBINED WARNING LABEL, ISO/ANSI PICTOGR	1.000 ea
LC0005	CONN.DIA.,TY M,9-LD,DUAL VOLT,REVERSING	1.000 ea
NP1669L	SS WD SUPER-E UL PREM REV MTG	1.000 ea
GOPA1000	PKG GRP, PRINT PK1026A06	1.000 ea
LB1404	BRAKE CONNECTION LABEL	1.000 ea
MN416A01	TAG-INSTAL-MAINT no wire (2100bx)4/22	1.000 ea

**AC Induction Motor Performance Data**

Record # 35063

Typical performance - not guaranteed values

<b>Winding: 36WGS268-R016</b>		<b>Type: 3642M</b>		<b>Enclosure: TEFC</b>	
<b>Nameplate Data</b>			<b>460 V, 60 Hz: High Voltage Connection</b>		
<b>Rated Output (HP)</b>	5	<b>Full Load Torque</b>	14.9 LB-FT		
<b>Volts</b>	230/460	<b>Start Configuration</b>	direct on line		
<b>Full Load Amps</b>	13.4/6.7	<b>Breakdown Torque</b>	52.2 LB-FT		
<b>R.P.M.</b>	1750	<b>Pull-up Torque</b>	31.5 LB-FT		
<b>Hz</b>	60 <b>Phase</b>	3	<b>Locked-rotor Torque</b>	34.9 LB-FT	
<b>NEMA Design Code</b>	<b>B KVA Code</b>	J	<b>Starting Current</b>	49.1 A	
<b>Service Factor (S.F.)</b>		1.15	<b>No-load Current</b>	3.24 A	
<b>NEMA Nom. Eff.</b>	89.5 <b>Power Factor</b>	78	<b>Line-line Res. @ 25°C</b>	2.27 Ω	
<b>Rating - Duty</b>	40C AMB-CONT		<b>Temp. Rise @ Rated Load</b>	71°C	
<b>S.F. Amps</b>			<b>Temp. Rise @ S.F. Load</b>	87°C	
			<b>Locked-rotor Power Factor</b>	39.8	
			<b>Rotor inertia</b>	0.391 LB-FT <sup>2</sup>	

**Load Characteristics 460 V, 60 Hz, 5 HP**

<b>% of Rated Load</b>	<b>25</b>	<b>50</b>	<b>75</b>	<b>100</b>	<b>125</b>	<b>150</b>	<b>S.F.</b>
<b>Power Factor</b>	39	60	72	78	83	83	81
<b>Efficiency</b>	85	89.7	90.6	89.6	88.6	87	89
<b>Speed</b>	1789	1776	1762	1750	1733	1714	1740
<b>Line amperes</b>	3.55	4.31	5.43	6.65	7.94	9.64	7.42



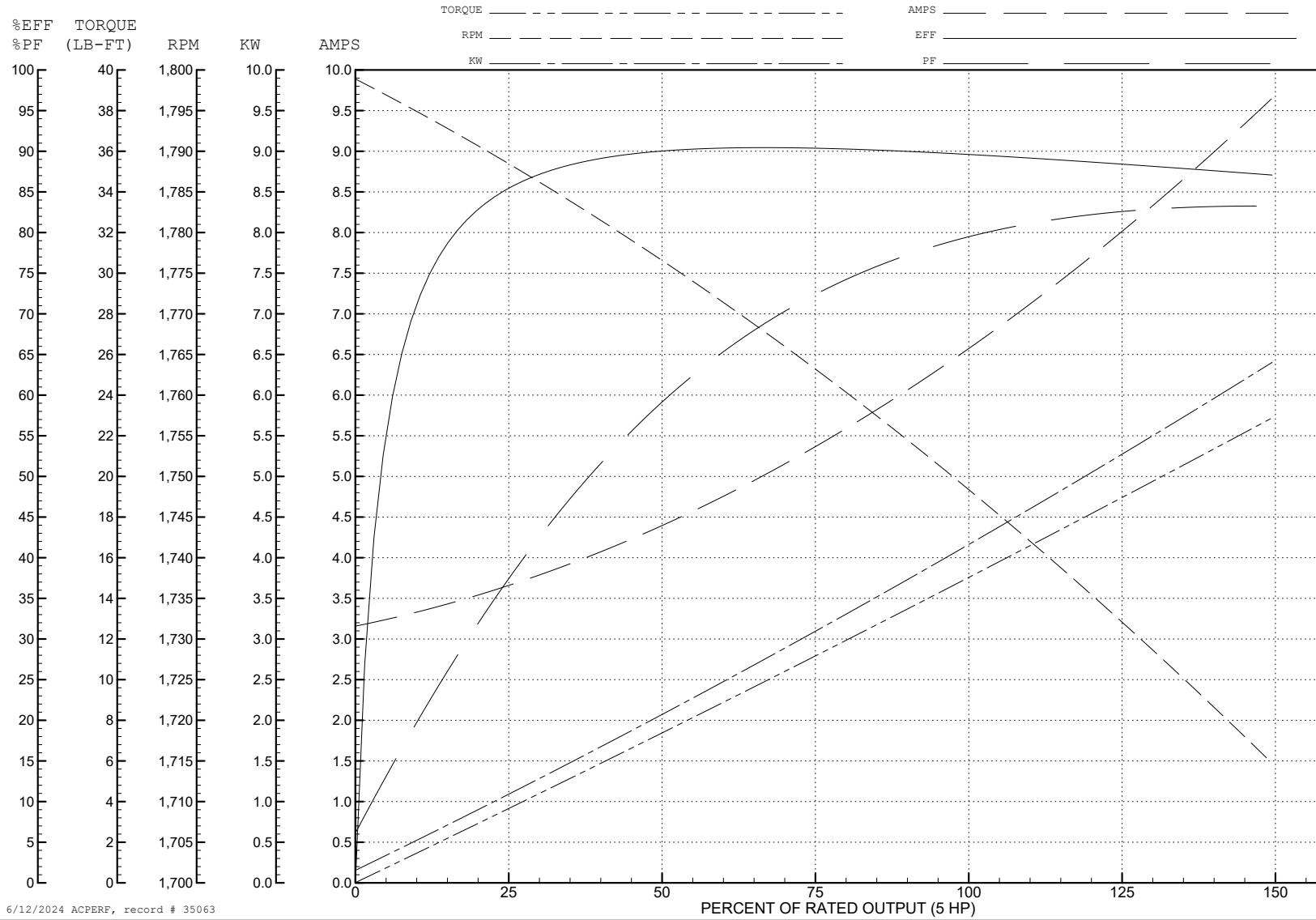
ABB Motors and Mechanical Inc.

WINDING # 36WGS268

5 HP 3 PH 60 HZ 1750 RPM 460 V 3642M

Typical performance - not guaranteed values.

TORQUES (LB-FT): PO=52.2 PU=31.5 LR=34.9 LRA=49.1



6/12/2024 ACPERF, record # 35063

**AC Induction Motor Performance Data**

Record # 93277

Typical performance - not guaranteed values

Winding: 36WGS268-R016		Type: 3642M	Enclosure: TEFC	
<b>Nameplate Data</b>			<b>230 V, 60 Hz: Low Voltage Connection</b>	
Rated Output (HP)	5	Full Load Torque	14.9 LB-FT	
Volts	230/460	Start Configuration	direct on line	
Full Load Amps	13.4/6.7	Breakdown Torque	52.2 LB-FT	
R.P.M.	1750	Pull-up Torque	31.5 LB-FT	
Hz	60 Phase	Locked-rotor Torque	34.9 LB-FT	
NEMA Design Code	B KVA Code	Starting Current	98.2 A	
Service Factor (S.F.)	1.15	No-load Current	6.48 A	
NEMA Nom. Eff.	89.5 Power Factor	Line-line Res. @ 25°C	0.567 Ω	
Rating - Duty	40C AMB-CONT	Temp. Rise @ Rated Load	71°C	
S.F. Amps		Temp. Rise @ S.F. Load	86°C	
		Locked-rotor Power Factor	39.8	
		Rotor inertia	0.391 lb-ft <sup>2</sup>	

**Load Characteristics 230 V, 60 Hz, 5 HP**

% of Rated Load	25	50	75	100	125	150	S.F.
Power Factor	38	60	72	78	83	83	81
Efficiency	84.9	89.6	90.5	89.6	88.5	87	88.9
Speed	1789	1776	1762	1750	1733	1714	1740
Line amperes	7.1	8.62	10.86	13.3	15.88	19.28	14.8

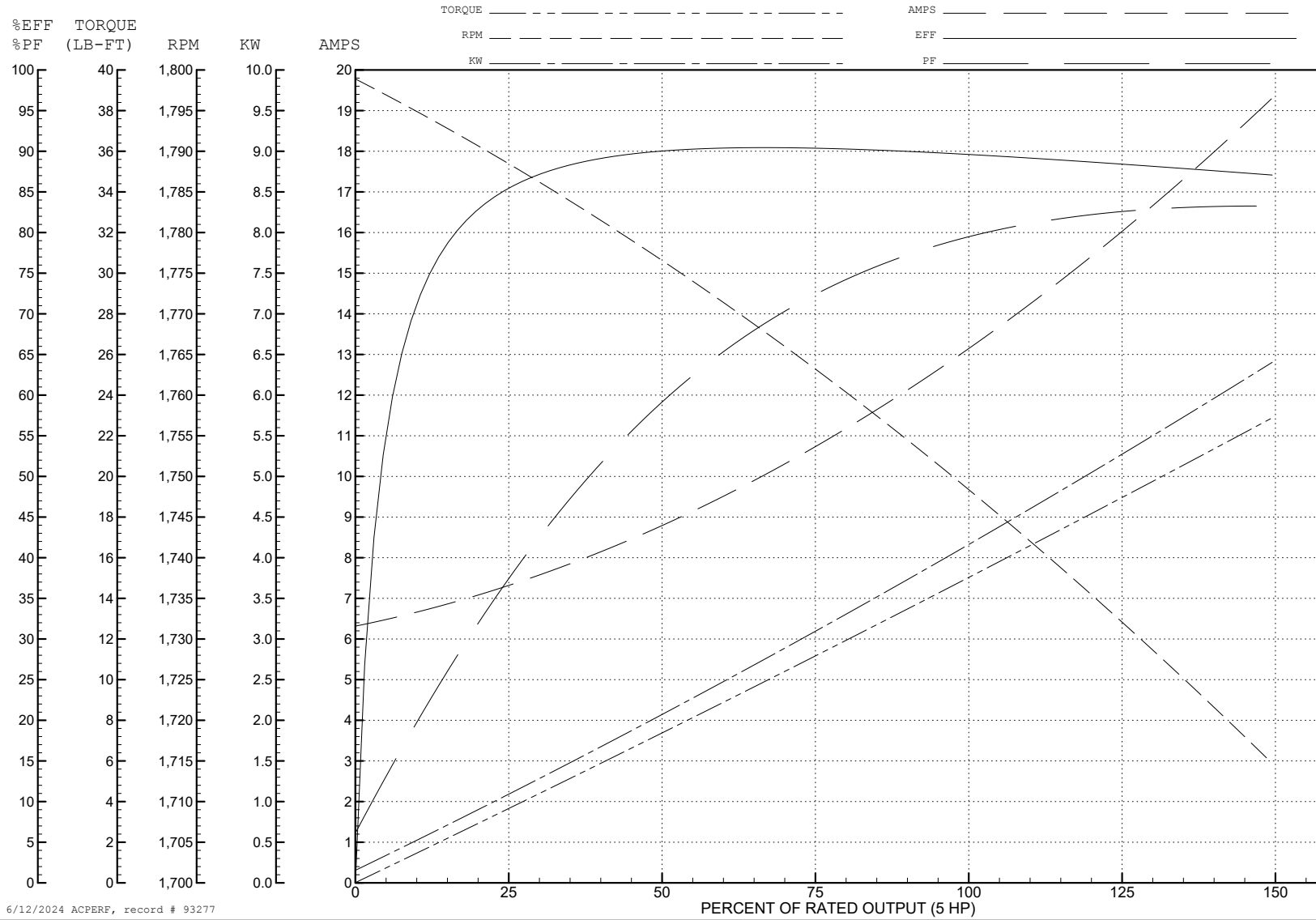
ABB Motors and Mechanical Inc.

WINDING # 36WGS268

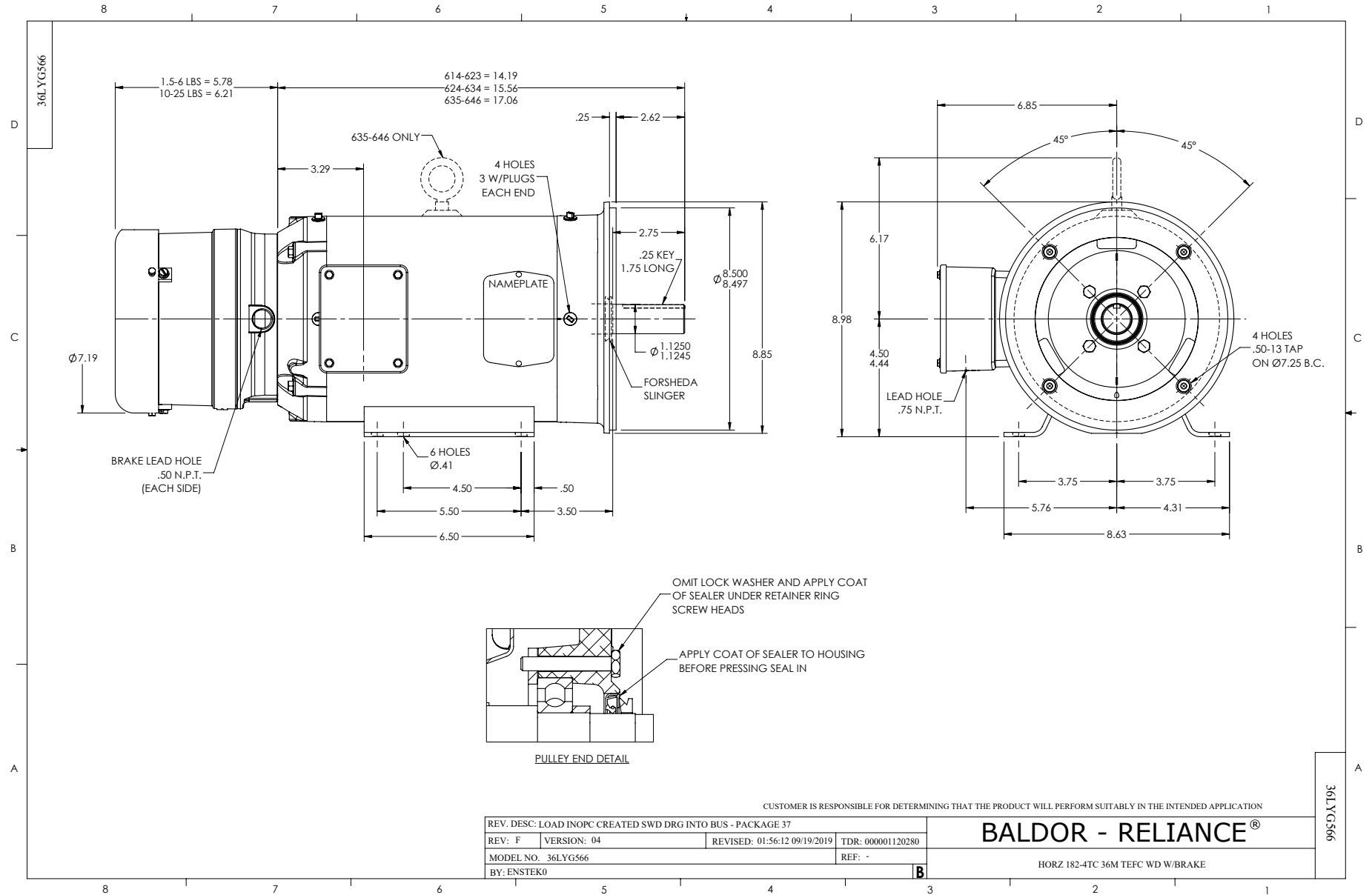
5 HP 3 PH 60 HZ 1750 RPM 230 V 3642M

Typical performance - not guaranteed values.

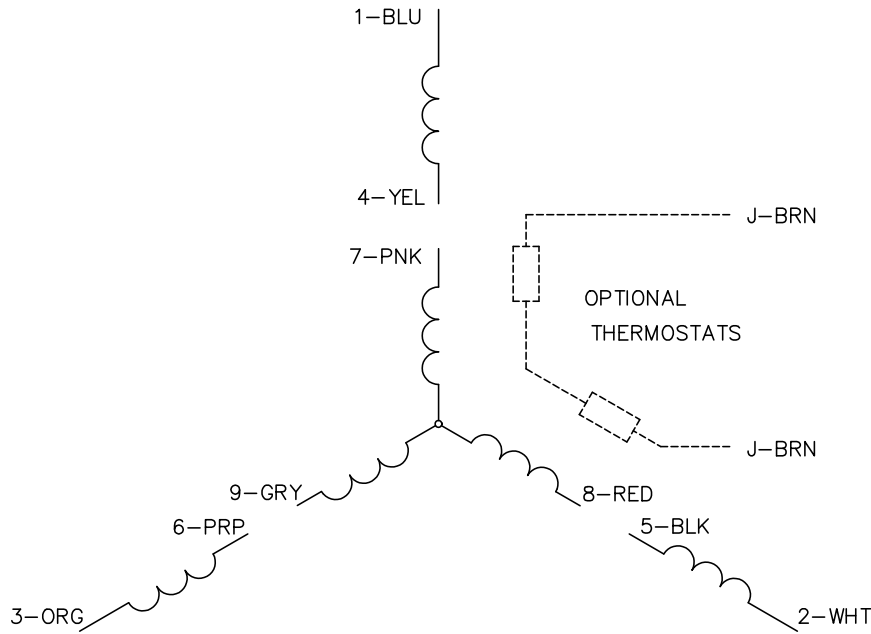
TORQUES (LB-FT): PO=52.2 PU=31.5 LR=34.9 LRA=98.2



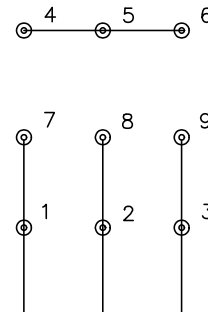
6/12/2024 ACPERF, record # 93277



CD0005

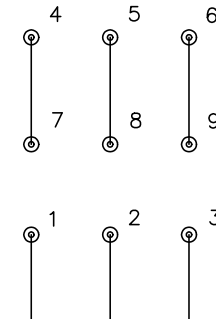


LOW VOLTAGE  
(2Y)



LINE

HIGH VOLTAGE  
(1Y)



LINE

NOTES:

1. INTERCHANGE ANY TWO LINE LEADS TO REVERSE ROTATION.
2. OPTIONAL THERMOSTATS ARE PROVIDED WHEN SPECIFIED.
3. ACTUAL NUMBER OF INTERNAL PARALLEL CIRCUITS MAY BE A MULTIPLE OF THOSE SHOWN ABOVE.
4. LEAD COLORS ARE OPTIONAL. LEADS MUST ALWAYS BE NUMBERED AS SHOWN.

CD0005

REV. DESC: REVISE TO SHOW OPTIONAL COLORS			
REV. LTR: E	BY: JLP	REVISED: 01/19/99 10:15	TDR: 0171435
S00000		FILE: AAA00005140	MDL: -
		MTL: -	

**BALDOR ELECTRIC Co.**

3PH, DV, 9 LEADS