



Customer information packet

CEWDM3613T-5

5HP, 3450RPM, 3PH, 60HZ, 184TC, 3630M, TEFC, F1

Class - None

Division - Not Applicable

Specifications

Enclosure	TEFC
Frame	184TC
Frame Material	Steel
Frequency	60.00 Hz
Haz Area Class and Group	None
Haz Area Division	Not Applicable
Motor Letter Type	Three Phase
Output @ Frequency	5.000 HP @ 60 HZ
Phase	3
Synchronous Speed @ Frequency	3600 RPM @ 60 HZ
Voltage @ Frequency	575.0 V @ 60 HZ
Agency Approvals	UR CSA CSA EEV
Ambient Temperature	40 °C
Auxillary Box	No Auxillary Box
Auxillary Box Lead Termination	None
Base Indicator	Rigid
Bearing Grease Type	Polyrex EM (-20F +300F)
Blower	None
Current @ Voltage	4.700 A @ 575.0 V
Design Code	A
Drip Cover	No Drip Cover
Duty Rating	CONT
Efficiency @ 100% Load	88.5 %
Electrically Isolated Bearing	Not Electrically Isolated
Feedback Device	NO FEEDBACK
Front Face Code	Standard
Front Shaft Indicator	None
Heater Indicator	No Heater
High Voltage Full Load Amps	4.7 a
Insulation Class	F

Part detail

Revision	Q
Type	AC
Mech. spec.	36K190
Base	
Status	PRD/A
Elec. spec.	36WGS505
Layout	36LYK190
Eff. date	08-12-2024
CD Diagram	CD0006
Poles	02
Leads	3#16
Proprietary	False
Created date	02-07-2013

Inverter Code	Inverter Ready
KVA Code	L
Lifting Lugs	No Lifting Lugs
Locked Bearing Indicator	Locked Bearing
Motor Lead Exit	Ko Box
Motor Lead Quantity/Wire Size	3 @ 16 AWG
Motor Lead Termination	Flying Leads
Motor Standards	NEMA
Motor Type	3630M
Mounting Arrangement	F1
Number of Poles	2
Overall Length	16.54 IN
Power Factor	91
Product Family	Wash Down
Pulley End Bearing Type	Ball
Pulley Face Code	C-Face
Pulley Shaft Indicator	Standard
Rodent Screen	None
Service Factor	1.15
Shaft Diameter	1.125 IN
Shaft Extension Location	Pulley End
Shaft Ground Indicator	No Shaft Grounding
Shaft Rotation	Reversible
Shaft Slinger Indicator	No Slinger
Speed	3450 rpm
Speed Code	Single Speed
Starting Method	Direct on line
Thermal Device - Bearing	None
Thermal Device - Winding	None
Vibration Sensor Indicator	No Vibration Sensor
Winding Thermal 1	None
Winding Thermal 2	None

Nameplate

NP1669L									
CAT.NO.	CEWDM3613T-5								
SPEC.	36K190S505G3								
HP	5								
VOLTS	575								
AMP	4.7								
RPM	3450								
FRAME	184TC		HZ	60		PH	3		
SER.F.	1.15	CODE	L	DES	A	CLASS	F		
NEMA-NOM-EFF	88.5	PF	91						
RATING	40C AMB-CONT								
CC	010A								
DE	6206		ODE	6205					
ENCL	TEFC	SN							
BLANK	SFA 5.3								

Parts list

Part number	Description	Quantity
SA258179	SA 36K190S505G3	1.000 ea
RA244955	RA 36K190S505G3	1.000 ea
34FN3002B02	EXTERNAL FAN, PLASTIC, .905/.907 HUB W/	1.000 ea
36CB3005A03W	36 CB .75 NPT @ 6 W/WHITE EPOXY	1.000 ea
35GS1022A03	GASKET BOX .125 THK WHITE NEOPRENE	1.000 ea
51XB1016A08	10-16X 1/2HXWSSLD SERTYB	2.000 ea
HA5027A01	HA4066A01 T-DRAIN X2 BAGGED	1.000 ea
11XW1032G06	10-32 X .38, TAPTITE II, HEX WSHR SLTD U	1.000 ea
36EP3104A03MW	FREP MACH (RAISED FH PADS) WHITE EPOXY	1.000 ea
HW4032A01	BLACK DRAIN PLUG FOR WASH DOWN MOTORS	3.000 ea
HW5100A05	WVY WSHR F/205 & 304 BRGS	1.000 ea
36PE3301A27MW	PUEP ASSEMBLY FOR ROUTING PURPOSES	1.000 ea
HW4032A01	BLACK DRAIN PLUG FOR WASH DOWN MOTORS	3.000 ea
HW4600B50	SEAL 1.156 X 1.874 X 0.250 SINGLE LIP DB	1.000 ea
10XN2520S26	1/4-20X 1 5/8 HEX HD SS	4.000 ea
36FH4010A08	IEC FH NO GREASER - W/PRIMER	1.000 ea
11XW1032S06	10-32 X .38, TAPTITE II, HEX WSHR SLTD U	3.000 ea
36CB4518	36 LIPPED CB LID PRIMED	1.000 ea
37GS3010SP	1/16"WHITE LID GASKET	1.000 ea
59XW0832S07	TAPTITE II,HEX WSHR UNSLTD SER,410 S.S.,	4.000 ea
HW4600B32SP	V-RING SLINGER 1.000 X 1.540 X .24 VITON	1.000 ea
HW4600B36SP	V-RING SLINGER 1.188 X 1.690 X .24 VITON	1.000 ea
HW2502E16	#303 SS,SQ KEY 1/4 X 1.750	1.000 ea
HA7000A02	KEY RETAINER RING, 1 1/8 DIA, 1 3/8 DIA	1.000 ea
MJ5001A27	32220KN GRAY SEALER *MIN BUY 4 QTS=1GAL	0.001 qt
85XU0407S04	4X1/4 U DRIVE PIN STAINLESS	2.000 ea
LB1164	LABEL,WARNING AND DRAIN	1.000 ea
MJ1000A02	GREASE, POLYREX EM EXXON	0.050 lb
51XB1214A16	12-14X1.00 HXWSSLD SERTYB	1.000 ea
MG1025Z02	ACTIVATOR WILKOFASST 060.02HF	0.010 ga
MG1025W01	WILKOFASST, 781.01, SIGNAL WHITE #9003	0.022 ga

HA3101S25	THRUBOLT 1/4-20 X 11.00	4.000 ea
LC0006	CONNECTION LABEL	1.000 ea
NP1669L	SS WD SUPER-E UL PREM REV MTG	1.000 ea
36PA1001	PKG GRP, PRINT PK1017A06	1.000 ea
MN416A01	TAG-INSTAL-MAINT no wire (2500bx)4/22	1.000 ea
FE-0000001	ZRTG FE ASSEMBLY	1.000 ea

AC Induction Motor Performance Data

Record # 34807

Typical performance - not guaranteed values

Winding: 36WGS505-R003		Type: 3630M		Enclosure: TEFC	
Nameplate Data			575 V, 60 Hz: Single Voltage Motor		
Rated Output (HP)	5	Full Load Torque	7.64 LB-FT		
Volts	575	Start Configuration	direct on line		
Full Load Amps	4.7	Breakdown Torque	33.7 LB-FT		
R.P.M.	3450	Pull-up Torque	23.5 LB-FT		
Hz	60	Locked-rotor Torque	27.5 LB-FT		
NEMA Design Code	A	Starting Current	45.7 A		
Service Factor (S.F.)	1.15	No-load Current	1.34 A		
NEMA Nom. Eff.	88.5	Line-line Res. @ 25°C	3.58 Ω		
Rating - Duty	40C	Temp. Rise @ Rated Load	72°C		
S.F. Amps	5.3	Temp. Rise @ S.F. Load	88°C		
		Locked-rotor Power Factor	45		
		Rotor inertia	0.134 LB-FT ²		

Load Characteristics 575 V, 60 Hz, 5 HP

% of Rated Load	25	50	75	100	125	150	S.F.
Power Factor	63	81	88	91	93	93	92
Efficiency	83.2	88.4	89.1	88.3	87	85.8	87.5
Speed	3569	3537	3504	3466	3428	3385	3443
Line amperes	1.79	2.61	3.58	4.68	5.81	7.05	5.36

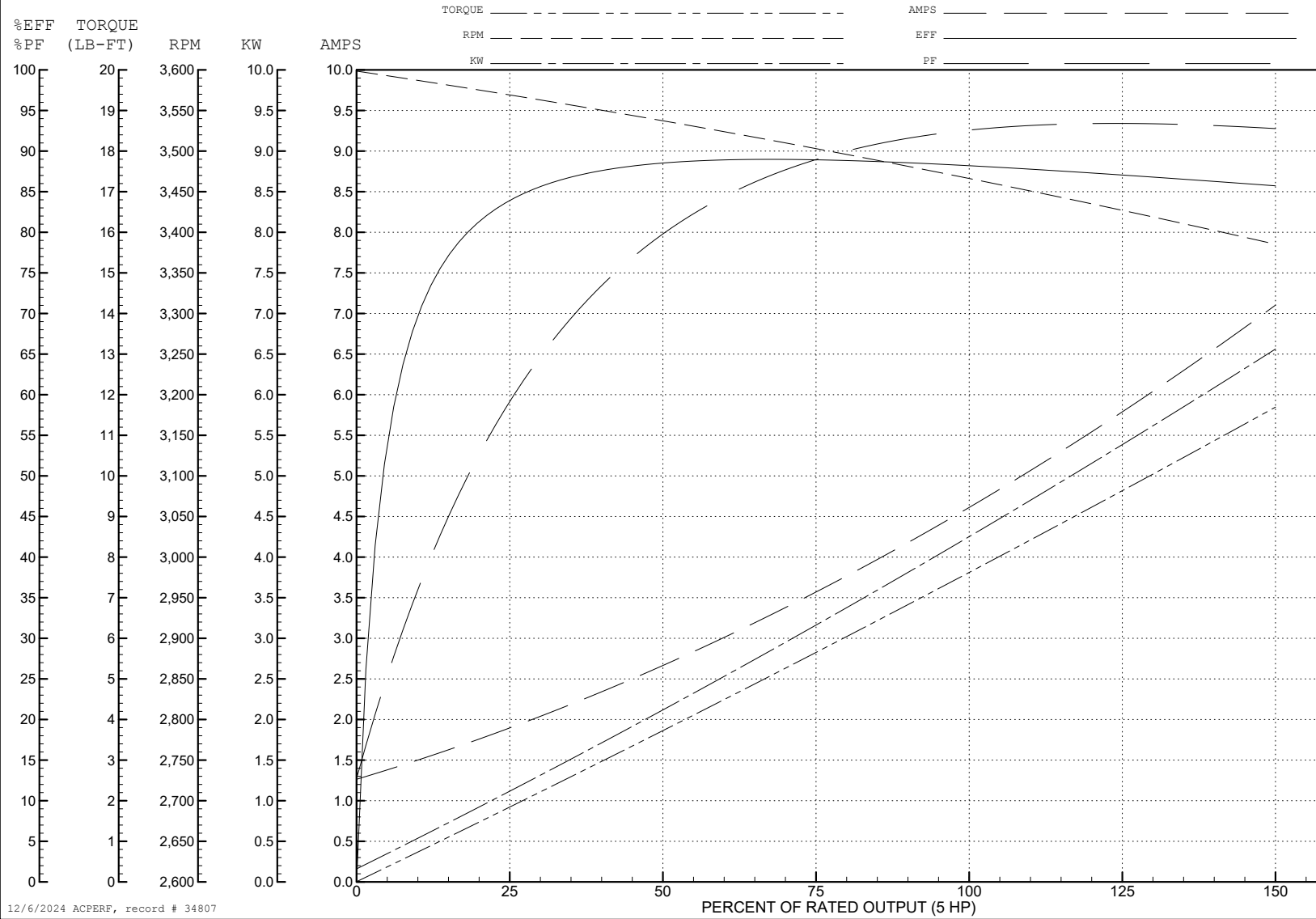
ABB Motors and Mechanical Inc.

WINDING # 36WGS505

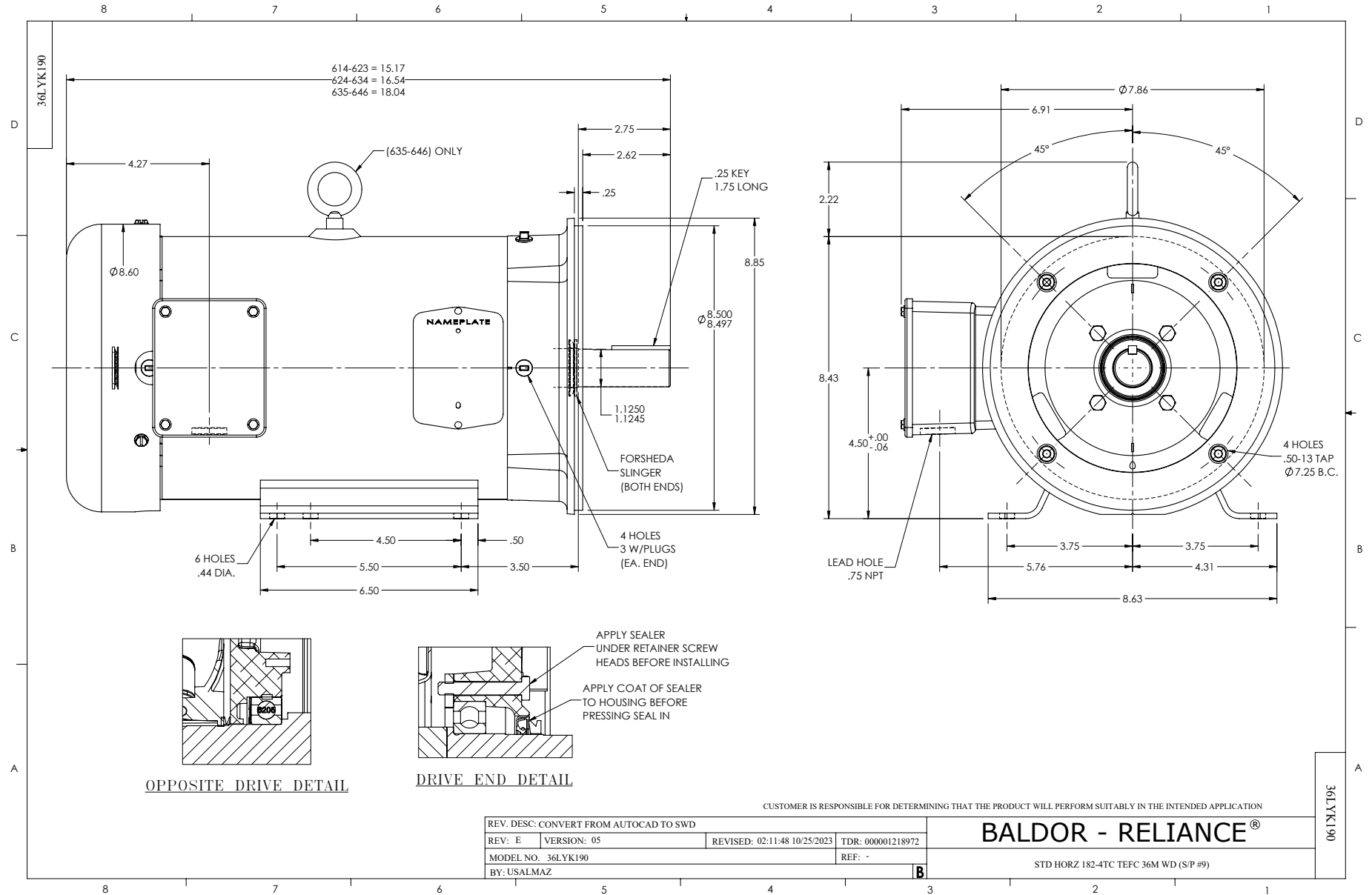
5 HP 3 PH 60 HZ 3450 RPM 575 V 3630M

Typical performance - not guaranteed values.

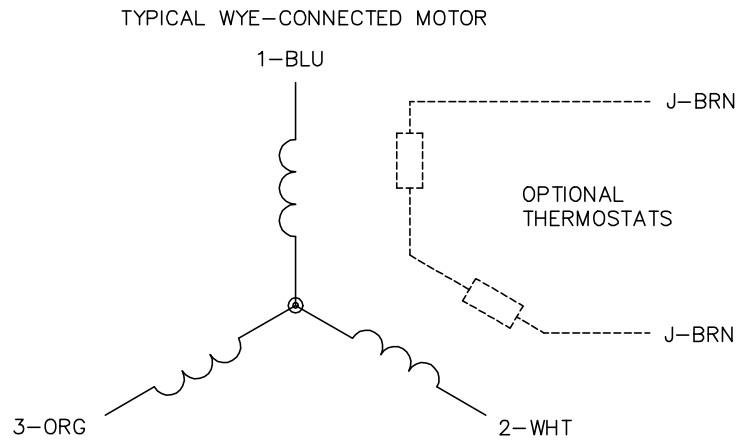
TORQUES (LB-FT): PO=33.7 PU=23.5 LR=27.5 LRA=45.7



12/6/2024 ACPERF, record # 34807



CD0006



NOTES:

1. THREE LEAD MOTOR MAY BE EITHER WYE CONNECTED OR DELTA CONNECTED.
2. INTERCHANGE ANY TWO LINE LEADS TO REVERSE ROTATION.
3. OPTIONAL THERMOSTATS ARE PROVIDED WHEN SPECIFIED.
4. ACTUAL NUMBER OF INTERNAL PARALLEL CIRCUITS MAY VARY.
5. LEAD COLORS ARE OPTIONAL. LEADS MUST BE NUMBERED AS SHOWN.

CD0006

REV. DESC: ADD CLASS CONN00000007		
REV. LTR: E	VERSION: 01	TDR: 000001099922
FILE: \AAA\00005\141	REVISED: 10:24:49 02/19/2019	BY: ENBRIRO
MTL: -	© □	

BALDOR - RELIANCE®

3PH, SV, 3 LEADS, WYE OR DELTA CONNECTED

SH 1 of 1