

BALDOR • RELIANCE

Customer information packet

CEWDM41906T

20HP, 3520RPM, 3PH, 60HZ, 256TC, TEFC, F1

Class - None

Division - Not Applicable

Copyright © All product information within this document is subject to ABB Motors and Mechanical Inc. copyright © protection, unless otherwise noted.

3/1/2024 6:06:21 PM

Specifications

Enclosure	TEFC
Frame	256TC
Frame Material	Steel
Frequency	60.00 Hz
Motor Letter Type	Three Phase
Output @ Frequency	20.000 HP @ 60 HZ
Phase	3
Synchronous Speed @ Frequency	3600 RPM @ 60 HZ
Voltage @ Frequency	230.0 V @ 60 HZ 460.0 V @ 60 HZ
XP Class and Group	None
XP Division	Not Applicable
Agency Approvals	CSA CSA EEV NEMA PREMIUM UR
Ambient Temperature	40 °C
Auxillary Box	No Auxillary Box
Auxillary Box Lead Termination	None
Base Indicator	Rigid
Bearing Grease Type	Polyrex EM (-20F +300F)
Blower	None
Current @ Voltage	46.000 A @ 230.0 V 23.000 A @ 460.0 V
Design Code	A
Drip Cover	No Drip Cover
Duty Rating	CONT
Efficiency @ 100% Load	91.0 %
Electrically Isolated Bearing	Not Electrically Isolated
Feedback Device	NO FEEDBACK
Heater Indicator	No Heater
High Voltage Full Load Amps	23.0 a

Part detail

Revision	L
Type	AC
Mech. spec.	
Base	
Status	PRD/A
Elec. spec.	39WGX191
Layout	39LYR098
Eff. date	02-14-2024
CD Diagram	CD0005
Poles	02
Leads	9#12
Proprietary	False
Created date	08-13-2019

Insulation Class	F
Inverter Code	Inverter Duty
IP Rating	IP55
KVA Code	H
Lifting Lugs	Standard Lifting Lugs
Locked Bearing Indicator	Locked Bearing
Motor Lead Termination	Flying Leads
Motor Standards	NEMA
Motor Type	3940M
Mounting Arrangement	F1
Number of Poles	2
Overall Length	23.57 IN
Power Factor	90
Product Family	Wash Down
Pulley Face Code	C-Face
Rodent Screen	None
Service Factor	1.00
Shaft Diameter	1.625 IN
Shaft Ground Indicator	No Shaft Grounding
Shaft Rotation	Reversible
Speed	3520 rpm
Speed Code	Single Speed
Starting Method	Direct on line
Thermal Device - Bearing	None
Thermal Device - Winding	None
Vibration Sensor Indicator	No Vibration Sensor
Winding Thermal 1	None
Winding Thermal 2	None

Nameplate

NP1669L									
CAT.NO.	CEWDM41906T								
SPEC.	39-0000-0190								
HP	20								
VOLTS	230/460								
AMP	46/23								
RPM	3520								
FRAME	256TC		HZ	60		PH	3		
SER.F.	1.15	CODE	H	DES	A	CLASS	F		
NEMA-NOM-EFF	91	PF	90						
RATING	40C AMB-CONT								
CC	010A								
DE	6309		ODE	6208					
ENCL	TEFC	SN							
BLANK	10:1CT, 20:1VT @ 1.00SF								

Parts list

Part number	Description	Quantity
SA372996	SA 39-0000-0190	1.000 ea
RA362770	RA 39-0000-0190	1.000 ea
LB1164	LABEL,WARNING AND DRAIN	1.000 ea
LC0005	CONN.DIA.,TY M,9-LD,DUAL VOLT,REVERSING	1.000 ea
NP1669L	SS WD SUPER-E UL PREM REV MTG	1.000 ea
85XU0407S04	4X1/4 U DRIVE PIN STAINLESS	2.000 ea
MN416A01	TAG-INSTAL-MAINT no wire (2100bx)4/22	1.000 ea
HW3201A01	1/2-13 EYEBOLT	1.000 ea
09FH4000A23LP5	FAN COVER, MACH W/BLACK EPOXY, PRIMED	1.000 ea
10XN2520S16	41/4-20 X 1 HEX HEAD SS	3.000 ea
HA2101A05	SS SPACER,SCH 40,.25" SS PIPE,.625" LONG	3.000 ea
37FN3002C02	EXFN, PLASTIC, 6.00 OD, 1.503 ID	1.000 ea
HW2500A25	WOODRUFF KEY USA #1008 #BLOW CARBON STEE	1.000 ea
MJ1000A02	GREASE, POLYREX EM EXXON	0.080 lb
HA3154S02	THRUBOLT STUD 3/8-16 X 15.875 SS	4.000 ea
LD7020D09	LEAD SET, 12AWG, 9 LEAD, 20" LONG LEADS	1.000 ea
XY3816S12	3/8-16 HEX FINISHED NUT SS	8.000 ea
39EP1100A08LP5	FR ENDPLATE, MACH W/EPOXY PRIMER & MG102	1.000 ea
HW5100A08	W3118-035 WVY WSHR (WB)	1.000 ea
HW4032A01	BLACK DRAIN PLUG FOR WASH DOWN MOTORS	3.000 ea
39EP1500A04P	PU ENDPLATE, MACH W/EPOXY PRIMER	1.000 ea
HW4600B44	V-RING SLINGER 1.500 X 1.810 X .28 VITON	1.000 ea
HW4600B44	V-RING SLINGER 1.500 X 1.810 X .28 VITON	1.000 ea
HW4600B53	SEAL 1.688 X 2.275 X 0.312 SINGLE LIP DB	1.000 ea
10XN2520S28	1/4-20X 1 3/4 HEX HD SS X	4.000 ea
HW4032A01	BLACK DRAIN PLUG FOR WASH DOWN MOTORS	3.000 ea
09CB3002A50P	CB MACH - 1.25 N.P.T. LEAD HOLE W/EPOXY	1.000 ea
09GS1017	GASKET, CONDUIT BOX, .125 THICK BLACK NE	1.000 ea
19XW2520A16	SCREW,1/4-20X1 TAPTITE-II OR ROLOC 91	2.000 ea
HW1001A25	LOCKWASHER 1/4, ZINC PLT .493 OD, .255 I	2.000 ea
WD1000B25	GND LUG, BURNDY L125HP OR T&B L125HP-BB	1.000 ea

19XW3118G08	.31-18X.50,HEX WSHR HD,TAPTITE 2,GREEN	1.000 ea
HA6016WP	ADAPTER, CONDUIT BOX, W/WHITE EPOXY, PRIM	1.000 ea
09CB3501P	CONDUIT BOX LID FOR 09CB3001 & 09CB3002	1.000 ea
12GS1002	GASKET, CONDUIT BOX LID, NEOP	1.000 ea
19XT2520S12	1/4-20X3/4 HWH NO SLOT TY.23 18-8 S.S.	2.000 ea
HW1001S25	WASHER, 1/4 SPLT LK, STAINLESS STEEL	2.000 ea
09GS1006	GASKET, CONDUIT BOX, NEOP-1/16 THICK-BLA	1.000 ea
MG1025W01	WILKOFAS, 781.01, SIGNAL WHITE #9003	0.070 ga
MJ5001A27	32220KN GRAY SEALER *MIN BUY 4 QTS=1GAL	0.031 qt
MJ5002A01	SILICON RUBBER SEALANT, 732CL 10.3 OZ TU	0.025 ea
40PA1000	PACKAGING GROUP	1.000 ea
HW2502G25	#303 SS,SQ KEY 3/8 X 2.880	1.000 ea
LB1624	COMBINED WARNING LABEL, ISO/ANSI PICTOGR	1.000 ea

AC Induction Motor Performance Data

Record # 41946

Typical performance - not guaranteed values

Winding: 39WGX191-R001		Type: 3940M		Enclosure: TEFC	
Nameplate Data			460 V, 60 Hz: High Voltage Connection		
Rated Output (HP)	20	Full Load Torque	29.6 LB-FT		
Volts	230/460	Start Configuration	direct on line		
Full Load Amps	46/23	Breakdown Torque	108 LB-FT		
R.P.M.	3520	Pull-up Torque	40.8 LB-FT		
Hz	60	Locked-rotor Torque	51.6 LB-FT		
NEMA Design Code	A	Starting Current	168 A		
Service Factor (S.F.)	1.15	No-load Current	6.78 A		
NEMA Nom. Eff.	91	Line-line Res. @ 25°C	0.446 Ω		
Rating - Duty	40C AMB-CONT	Temp. Rise @ Rated Load	77°C		
S.F. Amps		Temp. Rise @ S.F. Load	94°C		
		Locked-rotor Power Factor	28.4		
		Rotor inertia	1.02 lb-ft ²		

Load Characteristics 460 V, 60 Hz, 20 HP

% of Rated Load	25	50	75	100	125	150	S.F.
Power Factor	59	80	87	90	91	91	91
Efficiency	85.1	90.4	91.3	91.1	90.3	89.2	90.6
Speed	3580.6	3561.9	3542.4	3521.2	3498.6	3473.5	3508
Line amperes	8.79	12.7	17.5	22.6	28.5	34.3	26.1

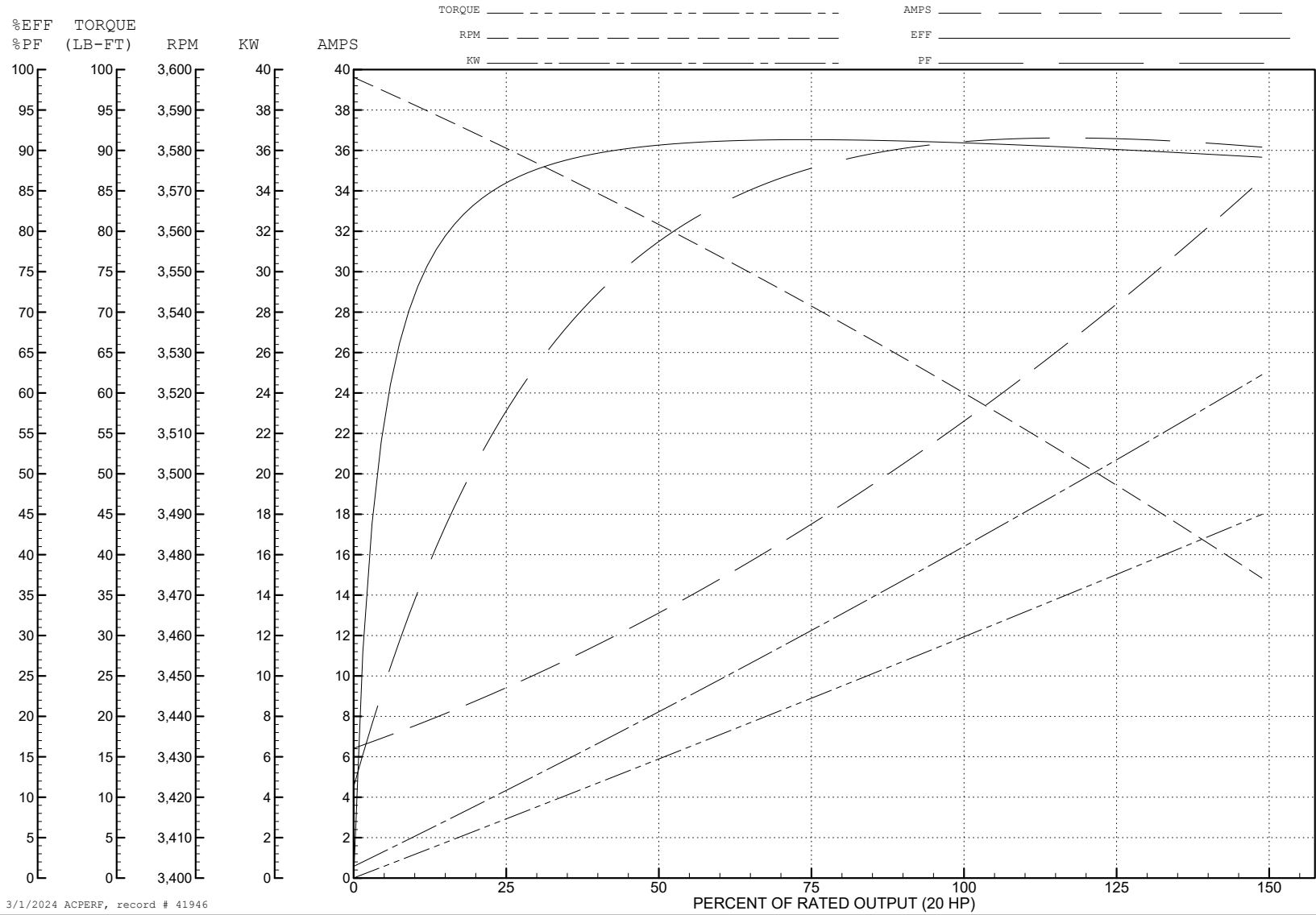
ABB Motors and Mechanical Inc.

WINDING # 39WGX191

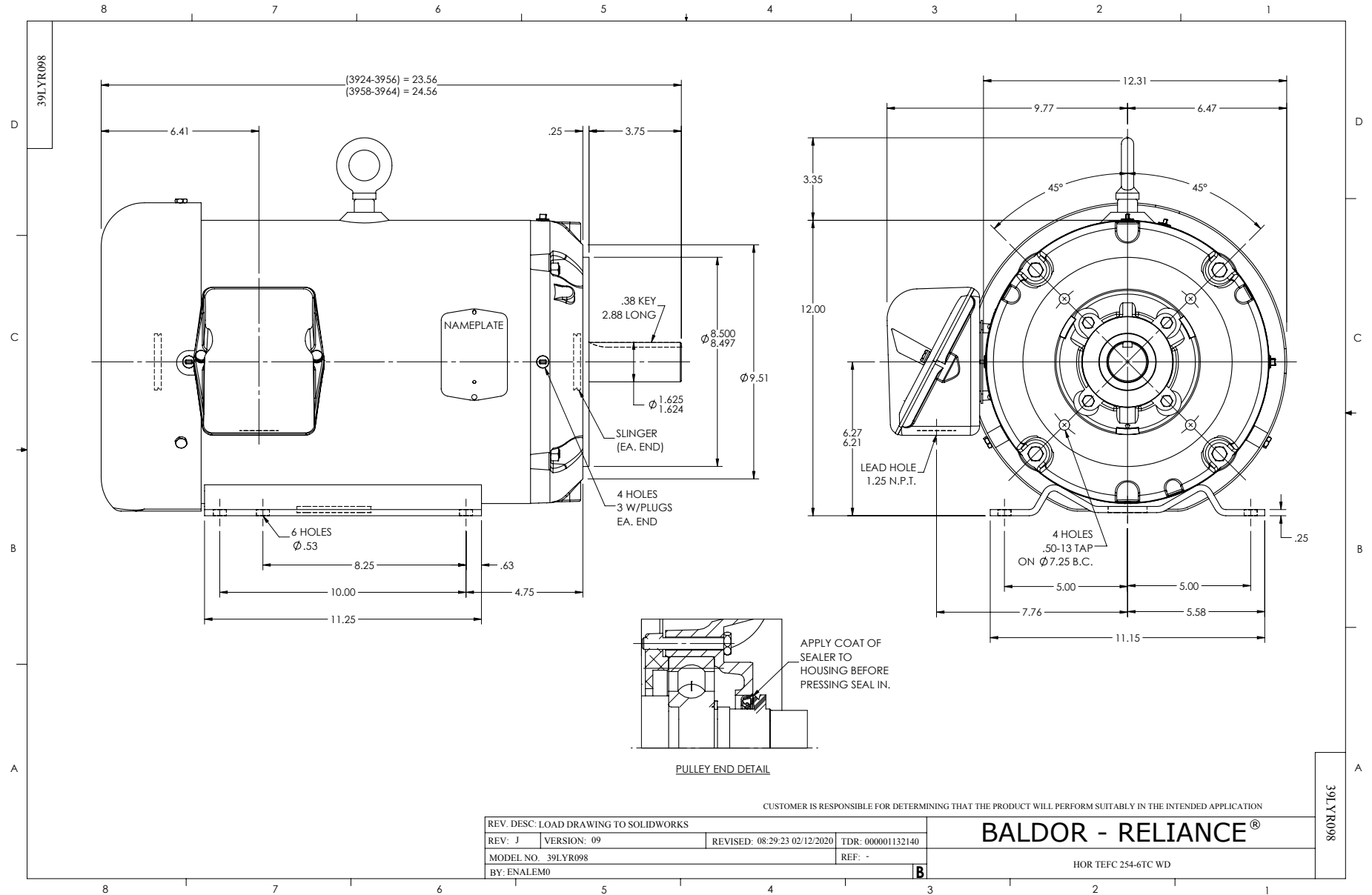
Typical performance - not guaranteed values.

20 HP 3 PH 60 HZ 3520 RPM 460 V 3940M

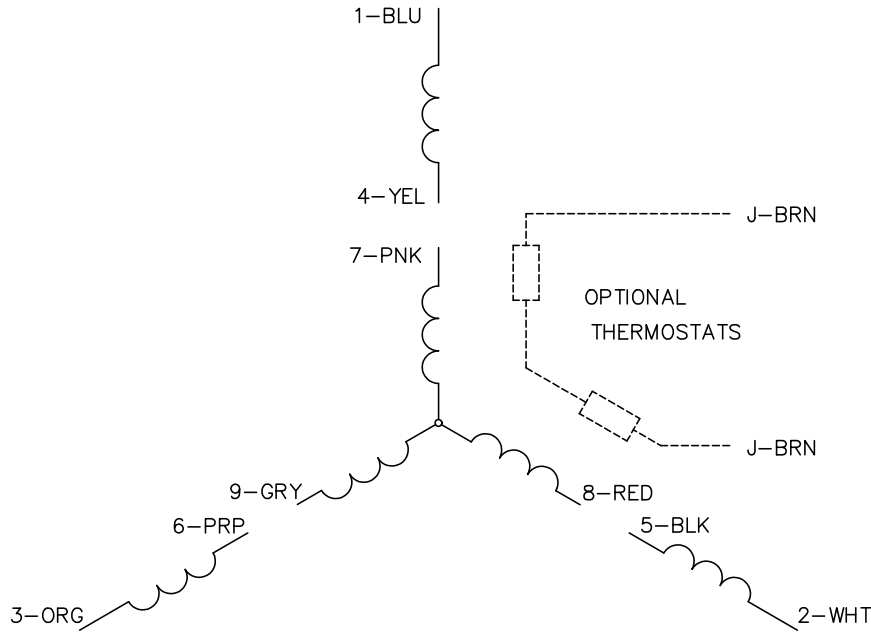
TORQUES (LB-FT): PO=108 PU=40.8 LR=51.6 LRA=168



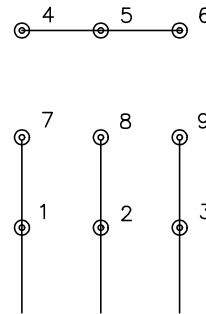
3/1/2024 ACPERF, record # 41946



CD0005

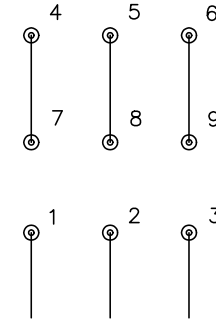


LOW VOLTAGE
(2Y)



LINE

HIGH VOLTAGE
(1Y)



LINE

NOTES:

1. INTERCHANGE ANY TWO LINE LEADS TO REVERSE ROTATION.
2. OPTIONAL THERMOSTATS ARE PROVIDED WHEN SPECIFIED.
3. ACTUAL NUMBER OF INTERNAL PARALLEL CIRCUITS MAY BE A MULTIPLE OF THOSE SHOWN ABOVE.
4. LEAD COLORS ARE OPTIONAL. LEADS MUST ALWAYS BE NUMBERED AS SHOWN.

CD0005

REV. DESC: REVISE TO SHOW OPTIONAL COLORS			
REV. LTR: E	BY: JLP	REVISED: 01/19/99 10:15	TDR: 0171435
S00000		FILE: AAA00005140	MDL: -
		MTL: -	

BALDOR ELECTRIC Co.

3PH, DV, 9 LEADS