

ABB BALDOR RELIANCE III

Customer information packet CFSWDM23932T-E

10HP, 1180RPM, 3PH, 60HZ, 256TC, 3964M, TEFC, F

Class - None

Division - Not Applicable

Specifications

Enclosure	TEFC
Frame	256TC
Frame Material	Stainless Steel
Frequency	60.00 Hz
Haz Area Class and Group	None
Haz Area Division	Not Applicable
Motor Letter Type	Three Phase
Output @ Frequency	10.000 HP @ 60 HZ
Phase	3
Synchronous Speed @ Frequency	1200 RPM @ 60 HZ
Voltage @ Frequency	230.0 V @ 60 HZ 460.0 V @ 60 HZ
Agency Approvals	NEMA PREMIUM CSA UR
Ambient Temperature	40 °C
Auxiliary Box	NO AUXILLARY BOX
Auxiliary Box Lead Termination	None
Base Indicator	Rigid
Bearing Grease Type	Polyrex EM (-20F +300F)
Blower	None
Current @ Voltage	15.100 A @ 460.0 V 30.200 A @ 230.0 V
Design Code	A
Drip Cover	No Drip Cover
Duty Rating	CONT
Efficiency @ 100% Load	91.0 %
Electrically Isolated Bearing	Not Electrically Isolated
Feedback Device	NO FEEDBACK
Front Face Code	Standard
Front Shaft Indicator	None
Heater Indicator	No Heater

Part Detail

Revision	Z
Type	AC
Mech. spec.	39E646
Base	
Status	PRD/A
Elec. spec.	39WGX896
Layout	39LYE646
Eff. date	02-10-2025
CD Diagram	CD0180
Poles	06
Leads	9#12
Proprietary	False
Created date	04-06-2017

High Voltage Full Load Amps	15.1 a
Insulation Class	H
Inverter Code	Inverter Ready
KVA Code	K
Lifting Lugs	Standard Lifting Lugs
Locked Bearing Indicator	Locked Bearing
Motor Lead Exit	Ko Box
Motor Lead Quantity/Wire Size	9 @ 12 AWG
Motor Lead Termination	Flying Leads
Motor Standards	NEMA
Motor Type	3964M
Mounting Arrangement	F1
Number of Poles	6
Overall Length	25.18 IN
Power Factor	68
Product Family	WD All SS Encapsulated
Pulley End Bearing Type	Sealed Bearing
Pulley Face Code	C-Face
Pulley Shaft Indicator	Standard
Rodent Screen	None
RoHS Status	ROHS COMPLIANT
Service Factor	1.15
Shaft Diameter	1.625 IN
Shaft Extension Location	Pulley End
Shaft Ground Indicator	No Shaft Grounding
Shaft Rotation	Reversible
Shaft Slinger Indicator	No Slinger
Speed	1180 rpm
Speed Code	Single Speed
Starting Method	Direct on line
Thermal Device - Bearing	None
Thermal Device - Winding	None
Vibration Sensor Indicator	No Vibration Sensor
Winding Thermal 1	None

Winding Thermal 2

None

Nameplate

NP4427AAA05											
CAT #	CFSWDM23932T-E				WGT		LBS				
SPEC	39E646X896G1				ENCL	TEFC					
SER #		CC	010A	IP	69						
HP	10	MAG CUR	17/8.5								
VOLTS	230/460				NEMA NOM. EFF	91					
AMPS	30.2/15.1				PF	68					
RATING	40C AMB-CONT										
RPM	1180				MAX RPM	1800					
FRAME	256TC	HZ	60	CODE	K	CLASS	H				
SER.F.	1.15	SF AMP		PH	3	DES	A				
DE	6309		ODE	6309							
LUBRICATION	POLYREX EM										
ID LOGO	INV TYPE:	VPWM	CHP	60	TO	90				1.5:1	
ID LOGO	WK2	5.14	CT	30	TO	60	2:1				
ID LOGO	SL HZ	1	VT	6	TO	60	10:1				
YR								QR			

Parts List

Part number	Description	Quantity
SA341992	SA 39E646X896G1	1.000 ea
RA325090	RA 39E646X896G1	1.000 ea
09FN3001D01SP	EXTERNAL FAN, PLASTIC (COMES W/SCREW FRO	1.000 ea
39CB1001A01	39 MID-SECTION, - 3PC. BOX W/5.75-12 THD	1.000 ea
RM1070A79	O-RING, -051 VITON/FKM .070CS X 5.489ID	1.000 ea
10XN2520S10	1/4-20X 5/8 HEX HD CAP SS	4.000 ea
HW1001S25	WASHER, 1/4 SPLT LK, STAINLESS STEEL	4.000 ea
WD1000B16	T&B CX70TN OR L70P TERMINAL LUG	1.000 ea
10XN2520S08	SCREW, 1/4-20 X 1/2 HHCS SS	1.000 ea
39EP1904A02	FREP ENCL 309 BRG (STAINLESS) POLISHED	1.000 ea
RM1070A80	O-RING, VITON/FKM .070CS X 10.800ID	1.000 ea
HW4600F81	45 X 68 X 10 LIP SEAL, GRAPHITE INFUSED	1.000 ea
HW4600F80	45 X 62 X 4.5 AFS SEAL, GRAPHITE INFUSED	1.000 ea
HW4500S33	1/8 NPT STAINLESS #304 SS PLUG	4.000 ea
HW4500S33	1/8 NPT STAINLESS #304 SS PLUG	4.000 ea
HW4600F81	45 X 68 X 10 LIP SEAL, GRAPHITE INFUSED	1.000 ea
HW4600F80	45 X 62 X 4.5 AFS SEAL, GRAPHITE INFUSED	1.000 ea
HW5100A11	W3917-042 WVY WSHR (WB)	1.000 ea
39EP1905A01	PUEP ENCL 309 BRG (STAINLESS) POLISHED	1.000 ea
RM1070A80	O-RING, VITON/FKM .070CS X 10.800ID	1.000 ea
RM1070A78	O-RING, -012 VITON/FKM .070CS X .364ID	4.000 ea
39FH4004A01	304 SS FANCOVER SPUN W/SLOTS & MTG(POLIS	1.000 ea
10XN2520FS08	HEX HD CAP SCREW 1/4-20 X 1/2 SS FOOD SA	3.000 ea
HW1001S25	WASHER, 1/4 SPLT LK, STAINLESS STEEL	3.000 ea
39CB1500A01	39 LID, 3 PC. BOX STAINLESS (POLISHED)	1.000 ea
RM1070A79	O-RING, -051 VITON/FKM .070CS X 5.489ID	1.000 ea
HW2502G25	#303 SS,SQ KEY 3/8 X 2.880	1.000 ea
MJ5001A27	32220KN GRAY SEALER *MIN BUY 4 QTS=1GAL	0.005 qt
MJ5004A93	FOOD GRADE (H1 RATED) ANTISEIZE THRD COM	0.005 ea
HA5027A09	DRAIN KIT,(2)HA4002A03 BAGGED W/LABEL	1.000 ea
MJ1000A02	GREASE, POLYREX EM EXXON	0.030 lb

HA3105FS14	THRUBOLT, 3/8-16 X 17.250 SS FOOD SAFE	4.000 ea
HW2502F08	KEY, 5/16 SQ X .875 303 SS	1.000 ea
51XB1214S20	12-14X1.25 HXWSSLD SERTYB, SS	1.000 ea
FE-0000013	ZRTG FE ASSEMBLY	1.000 ea
WD5603A01	KIT, CLOSED-END LEAD SPLICE (18-14GA)	1.000 ea
PE-0000003	ZRTG PE ASSEMBLY	1.000 ea
40PA1000	PACKAGING GROUP	1.000 ea
MN416A01	TAG-INSTAL-MAINT no wire (2500 bx)11/25	1.000 ea
LD7020D09	LEAD SET, 12AWG, 9 LEAD, 20" LONG LEADS	1.000 ea
HA1025A03	FELT WSH 2.1875 OD X 1.170 ID X .25 #321	8.000 ea

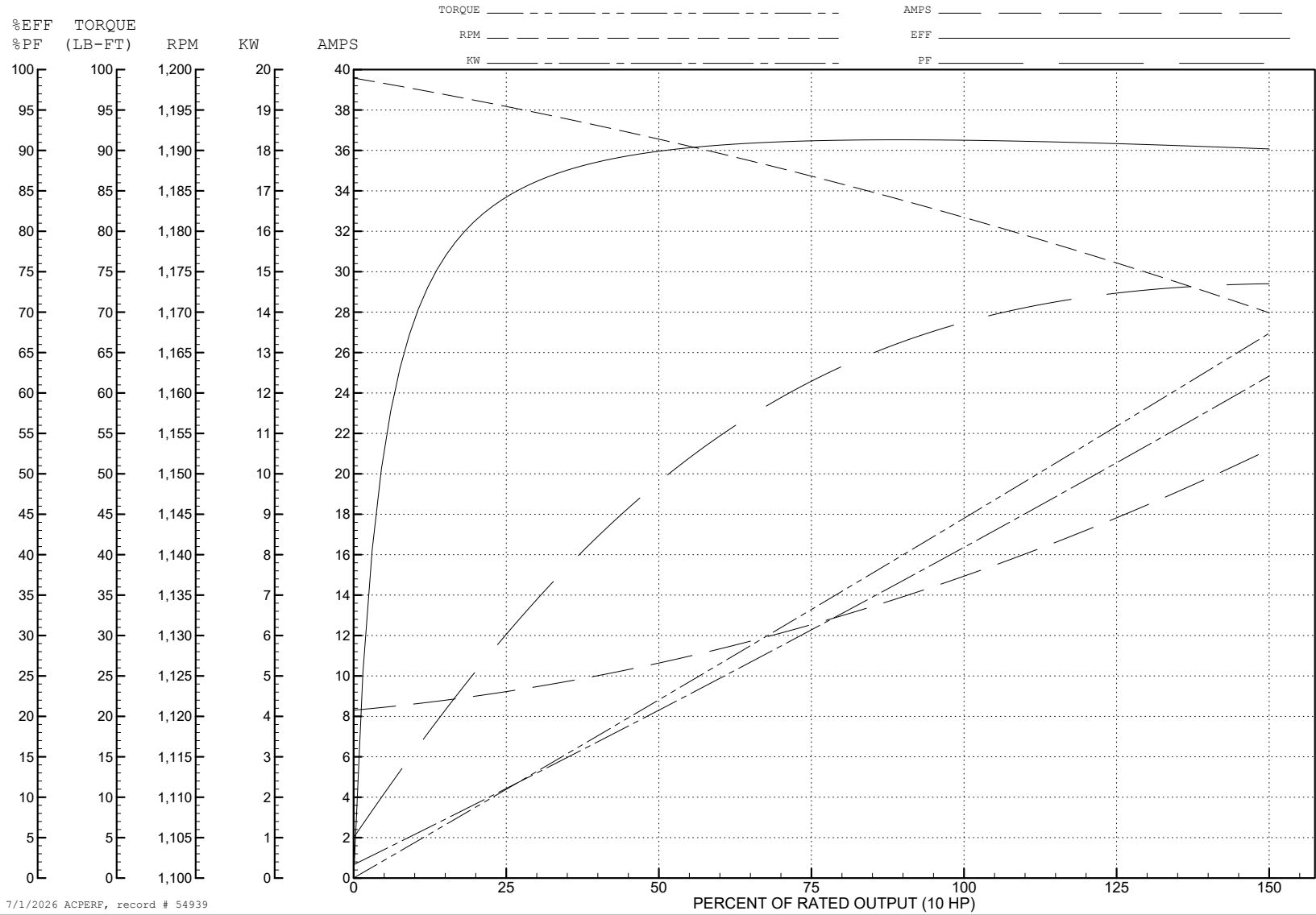
ABB Motors and Mechanical Inc.

WINDING # 39WGx896

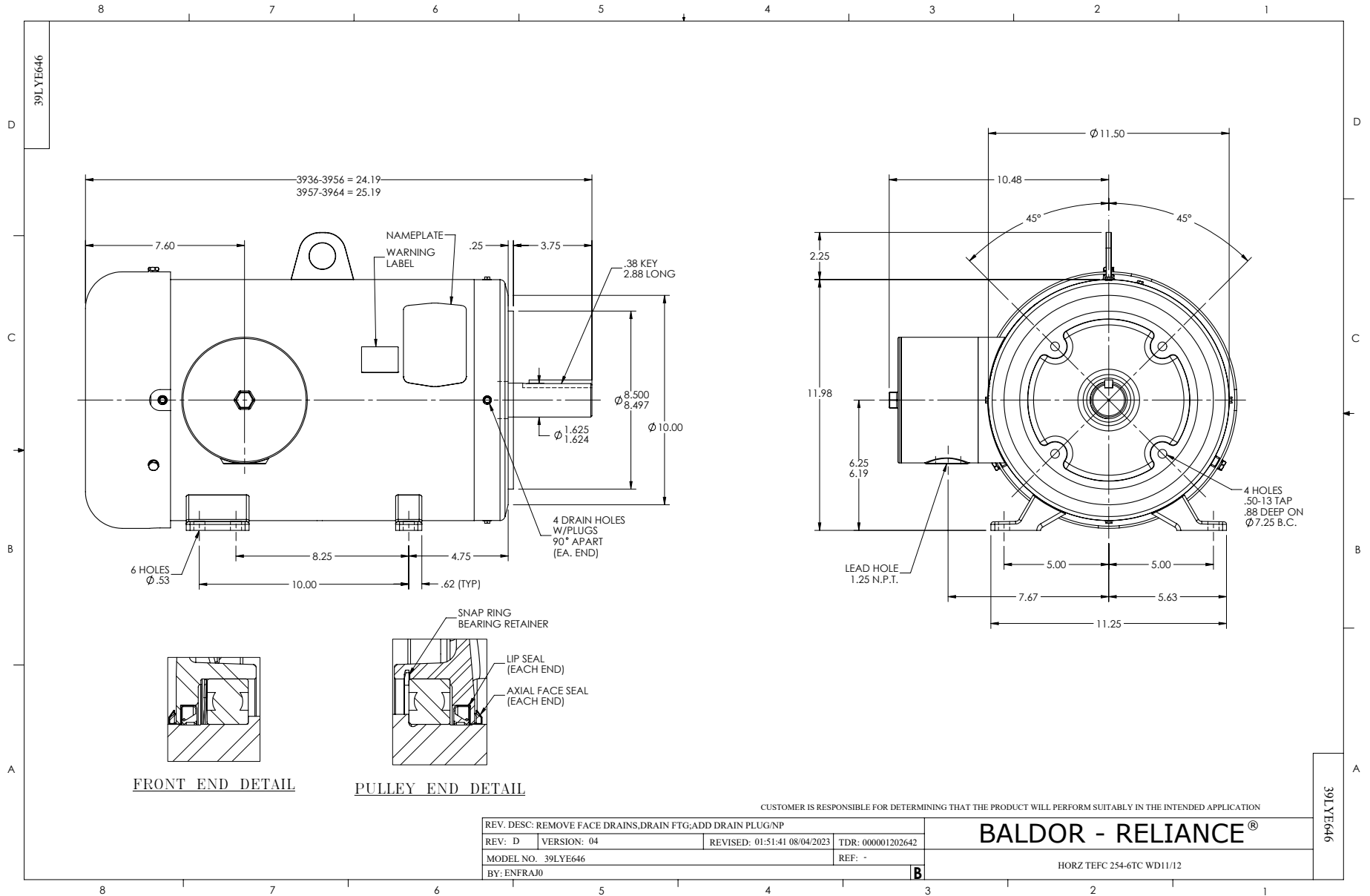
Typical performance - not guaranteed values.

10 HP 3 PH 60 HZ 1180 RPM 460 V 3964M

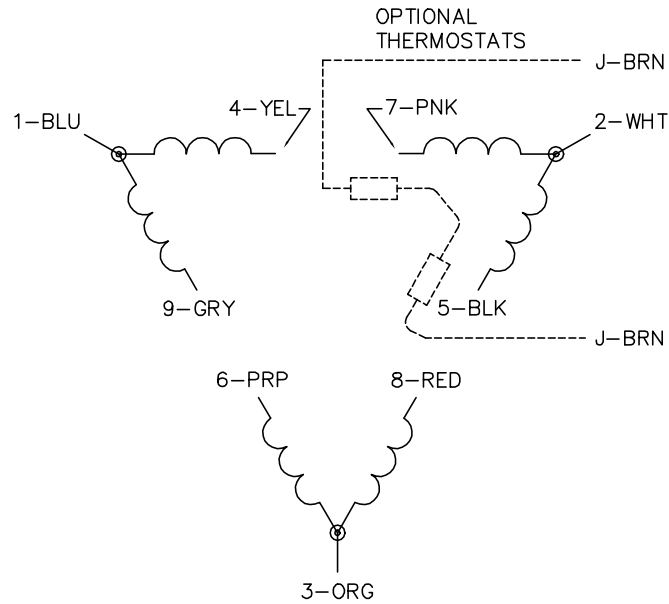
TORQUES (LB-FT): PO=149 PU=58 LR=81.2 LRA=103



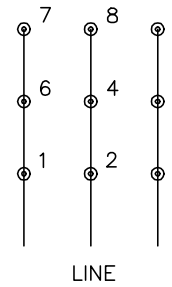
7/1/2026 ACPERF, record # 54939



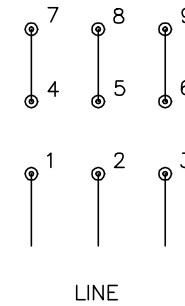
CD0180



LOW VOLTAGE
(2D)



HIGH VOLTAGE
(1D)



NOTES:

1. INTERCHANGE ANY TWO LINE LEADS TO REVERSE ROTATION.
2. OPTIONAL THERMOSTATS ARE PROVIDED WHEN SPECIFIED.
3. ACTUAL NUMBER OF INTERNAL PARALLEL CIRCUITS MAY BE A MULTIPLE OF THOSE SHOWN ABOVE.
4. LEAD COLORS ARE OPTIONAL. LEADS MUST ALWAYS BE NUMBERED AS SHOWN.

CD0180

REV. DESC: ADD CLASS CONN00000007		
REV. LTR: D	VERSION: 01	TDR: 000001099922
FILE: \AAA\00005\148	REVISED: 10: 25: 29 02/19/2019	BY: ENBRIRO
MTL: -	© □	

BALDOR - RELIANCE®

3PH, DV, 9 LEADS, DELTA CONNECTION

SH 1 of 1