



---

# Customer information packet

## CFSWDM3541-E

.75HP, 3500RPM, 3PH, 60HZ, 56C, 3520M, TENV, F1

Class - None

Division - Not Applicable

## Specifications

Enclosure	TENV
Frame	56C
Frame Material	Stainless Steel
Frequency	60.00 Hz
Haz Area Class and Group	None
Haz Area Division	Not Applicable
Motor Letter Type	Three Phase
Output @ Frequency	.750 HP @ 60 HZ
Phase	3
Synchronous Speed @ Frequency	3600 RPM @ 60 HZ
Voltage @ Frequency	460.0 V @ 60 HZ 230.0 V @ 60 HZ 208.0 V @ 60 HZ
Agency Approvals	CSA UR
Ambient Temperature	40 °C
Auxiliary Box	NO AUXILLARY BOX
Auxiliary Box Lead Termination	None
Base Indicator	Rigid
Bearing Grease Type	Polyrex EM (-20F +300F)
Blower	None
Current @ Voltage	2.100 A @ 208.0 V 2.000 A @ 230.0 V 1.000 A @ 460.0 V
Design Code	B
Drip Cover	No Drip Cover
Duty Rating	CONT
Efficiency @ 100% Load	86.5 %
Electrically Isolated Bearing	Not Electrically Isolated
Feedback Device	NO FEEDBACK
Front Face Code	Standard
Front Shaft Indicator	None

## Part detail

Revision	K
Type	AC
Mech. spec.	35E4735
Base	
Status	PRD/A
Elec. spec.	35WGP070
Layout	35LYE4735
Eff. date	08-14-2023
CD Diagram	CD0005
Poles	02
Leads	9#18 15" lead length,0#0 dbl dip & bake,0#0 phase insulaY
Proprietary	False
Created date	07-18-2017

Heater Indicator	No Heater
High Voltage Full Load Amps	1.0 a
Insulation Class	H
Inverter Code	Inverter Ready
KVA Code	M
Lifting Lugs	No Lifting Lugs
Locked Bearing Indicator	Locked Bearing
Motor Finish	UNPAINTED
Motor Lead Exit	Ko Box
Motor Lead Quantity/Wire Size	@ 0 AWG 9 @ 18 AWG
Motor Lead Termination	Flying Leads
Motor Standards	NEMA
Motor Type	3520M
Mounting Arrangement	F1
Number of Poles	2
Overall Length	11.78 IN
Power Factor	85
Product Family	WD All SS Encapsulated
Pulley End Bearing Type	Sealed Bearing
Pulley Face Code	C-Face
Pulley Shaft Indicator	Standard
Rodent Screen	None
RoHS Status	ROHS COMPLIANT
Service Factor	1.15
Shaft Diameter	0.625 IN
Shaft Extension Location	Pulley End
Shaft Ground Indicator	No Shaft Grounding
Shaft Rotation	Reversible
Shaft Slinger Indicator	No Slinger
Speed	3500 rpm
Speed Code	Single Speed
Starting Method	Direct on line
Thermal Device - Bearing	None

<b>Thermal Device - Winding</b>	None
<b>Vibration Sensor Indicator</b>	No Vibration Sensor
<b>Winding Thermal 1</b>	None
<b>Winding Thermal 2</b>	None

**Nameplate**

<b>NP4427AAA01</b>									
<b>CAT #</b>	CFSWDM3541-E			<b>WT</b>	41	<b>LBS</b>			
<b>SPEC</b>	35E4735P070G1			<b>ENCL</b>	TENV				
<b>SER #</b>				<b>CC</b>	010A	<b>IP</b>	69		
<b>HP</b>	.75	<b>MAG CUR</b>	1/5						
<b>VOLTS</b>	208-230/460			<b>NEMA NOM. EFF</b>	86.5				
<b>AMPS</b>	2.1-2/1			<b>PF</b>	85				
<b>RATING</b>	40C AMB-CONT								
<b>RPM</b>	3500			<b>MAX RPM</b>	5400				
<b>FRAME</b>	56C	<b>HZ</b>	60	<b>CODE</b>	M	<b>CLASS</b>	H		
<b>SER.F.</b>	1.15	<b>SF AMP</b>	2.4-2.2/1.1		<b>PH</b>	3	<b>DES</b>	B	
<b>DE</b>	6205		<b>ODE</b>	6205					
<b>LUBRICATION</b>	POLYREX EM								
<b>ID LOGO</b>	<b>INVERTER TYPE</b>	<b>VPWM</b>	<b>CHP</b>	60	<b>TO</b>	90	1.5:1		
<b>ID LOGO</b>	<b>WK2</b>	0.06	<b>CT</b>	15	<b>TO</b>	60	4:1		
<b>ID LOGO</b>	<b>SL HZ</b>	1.7	<b>VT</b>	3	<b>TO</b>	60	20:1		
				<b>QR</b>					
<b>YR</b>									

## Parts list

Part number	Description	Quantity
SA346290	SA 35E4735P070G1	1.000 ea
RA334801	RA 35E4735P070G1	1.000 ea
35CB1017A01	35/36 MID SECT - 3 PC. CONDUIT BOX 1/2 N	1.000 ea
HA3424S48	STUD - M6X1.0 THDS X 3.00"	1.000 ea
11XW1032G08	10-32 X .50, TAPTITE II, HEX WSHR SLTD U	1.000 ea
HW3001B02	BRASS CUP WASHER W/GROUND SYMBOL TAB,	1.000 ea
35EP1940A03	FRONT TENV 205 BRG (STAINLESS)	1.000 ea
RM1070A25	O-RING, VITON/FKM .070CS X 6.190ID	1.000 ea
HW4500S33	1/8 NPT STAINLESS #304 SS PLUG	4.000 ea
HW5100A05	WVY WSHR F/205 & 304 BRGS	1.000 ea
35EP1935A02	PULLEY 56C/143-5TC ENCL 205 BRG	1.000 ea
RM1070A25	O-RING, VITON/FKM .070CS X 6.190ID	1.000 ea
HW4600G01	.984X1.499X.25 VITON SLICK SERIES LIP	1.000 ea
HW4600E99	25 X 42 X 6 AFX SEAL, GRAPHITE INFUSED V	1.000 ea
HW4500S33	1/8 NPT STAINLESS #304 SS PLUG	4.000 ea
RM1070A26	O-RING,4.5MM I.D.X1.5MM C.S. (VITON)	4.000 ea
RM1070A81	O-RING, -043 VITON/FKM .070CS X 3.489ID	1.000 ea
35CB1513A01	35-36-37 MACH. LID - 3 PC. CONDUIT BOX	1.000 ea
RM1070A81	O-RING, -043 VITON/FKM .070CS X 3.489ID	1.000 ea
HW2502D13	SS KEY, 3/16 SQ X 1.375	1.000 ea
HA7000A04	KEY RETAINER 0.625 DIA SHAFTS	1.000 ea
MJ5001A27	32220KN GRAY SEALER *MIN BUY 4 QTS=1GAL	0.005 qt
MJ5004A93	FOOD GRADE (H1 RATED) ANTISEIZE THRD COM	0.005 ea
HA1025A21	WSHR,FELT .125" THK	1.000 ea
HA5027A09	DRAIN KIT,(2)HA4002A03 BAGGED W/LABEL	1.000 ea
MJ1000A02	GREASE, POLYREX EM EXXON	0.050 lb
WD5603A01	KIT, CLOSED-END LEAD SPLICE (18-14GA)	1.000 ea
HA3100FS11	THRUBOLT, 10-32 X 8.500 SS FOOD SAFE	4.000 ea
35PA1066	PKG GRP, PRINT PK1008A06	1.000 ea
MN416A01	TAG-INSTAL-MAINT no wire (2500 bx)11/22	1.000 ea
PE-0000010	ZRTG PE ASSEMBLY	1.000 ea

FE-0000007

ZRTG FE ASSEMBLY

1.000 ea

---

**AC Induction Motor Performance Data**

Record # 63249

Typical performance - not guaranteed values

Winding: 35WGP070-R004			Type: 3520M			Enclosure: TENV		
<b>Nameplate Data</b>				<b>460 V, 60 Hz: High Voltage Connection</b>				
Rated Output (HP)			.75	Full Load Torque	1.13 LB-FT			
Volts			208-230/460	Start Configuration	direct on line			
Full Load Amps			2.1-2/1	Breakdown Torque	5.62 LB-FT			
R.P.M.			3500	Pull-up Torque	2.68 LB-FT			
Hz	60 Phase		3	Locked-rotor Torque	4.74 LB-FT			
NEMA Design Code	B	KVA Code	M	Starting Current	10.4 A			
Service Factor (S.F.)			1.15	No-load Current	0.45 A			
NEMA Nom. Eff.	86.5	Power Factor	85	Line-line Res. @ 25°C	16.9 Ω			
Rating - Duty			40C AMB-CONT	Temp. Rise @ Rated Load	56°C			
S.F. Amps			2.4-2.2/1.1	Temp. Rise @ S.F. Load	65°C			
				Locked-rotor Power Factor	51.2			
				Rotor inertia	0.0553 LB-FT <sup>2</sup>			

**Load Characteristics 460 V, 60 Hz, 0.75 HP**

% of Rated Load	25	50	75	100	125	150	S.F.
Power Factor	47	67	79	85	88	90	87
Efficiency	73.7	82.6	84.9	85.8	84.9	83.9	85.3
Speed	3570	3547	3519	3492	3462	3430	3474
Line amperes	0.509	0.626	0.788	0.966	1.17	1.39	1.09

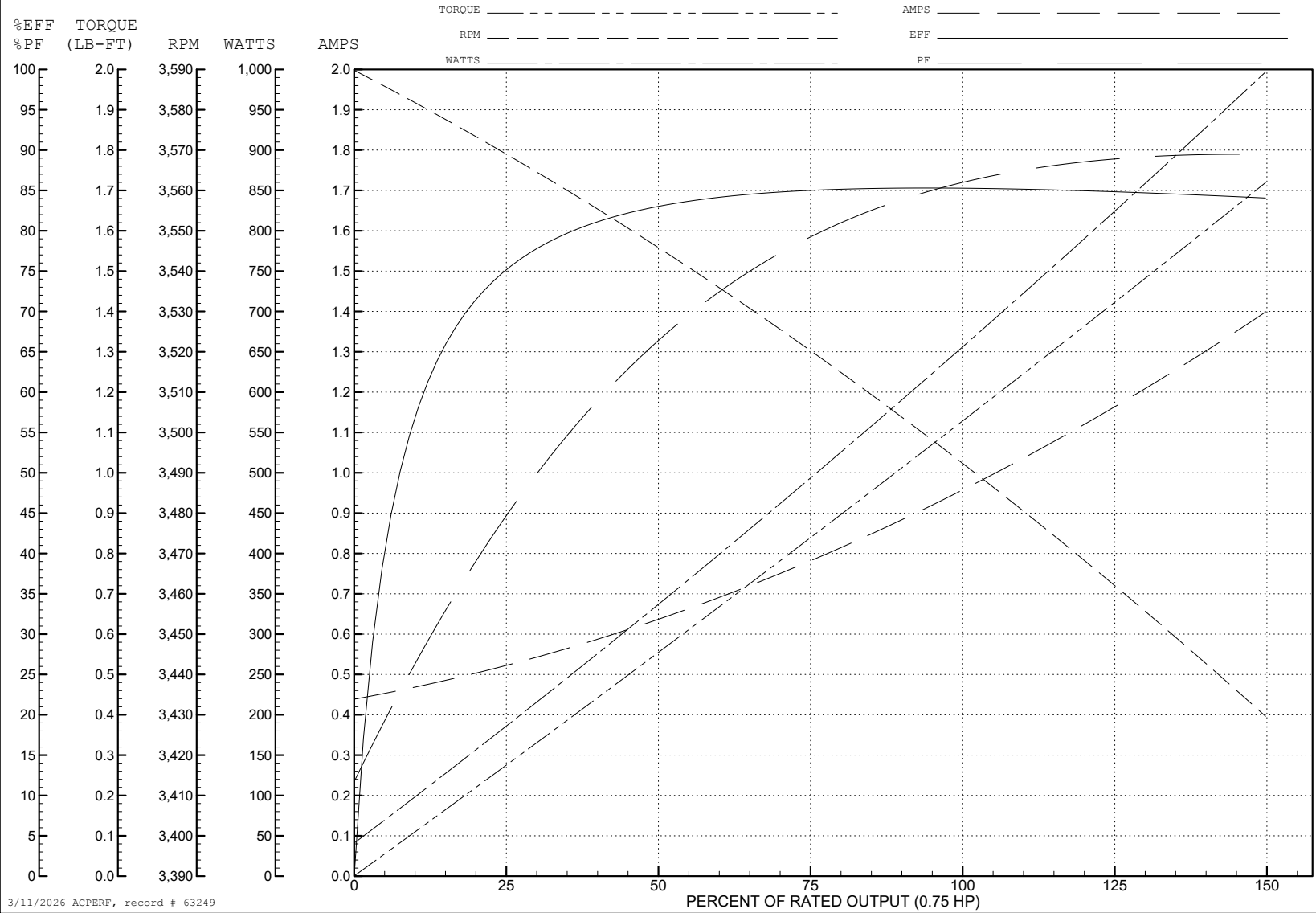
ABB Motors and Mechanical Inc.

WINDING # 35WGP070

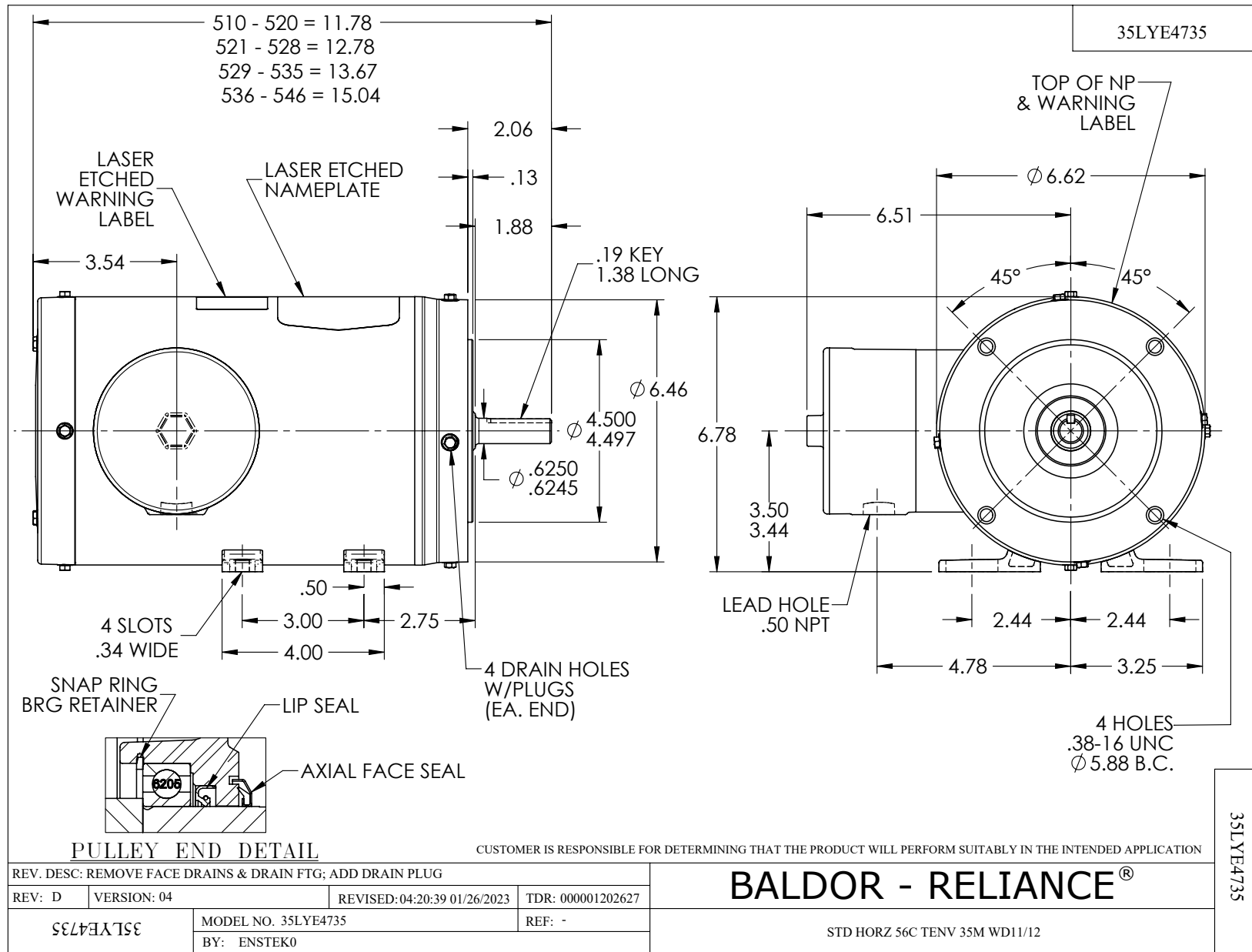
Typical performance - not guaranteed values.

0.75 HP 3 PH 60 HZ 3500 RPM 460 V 3520M

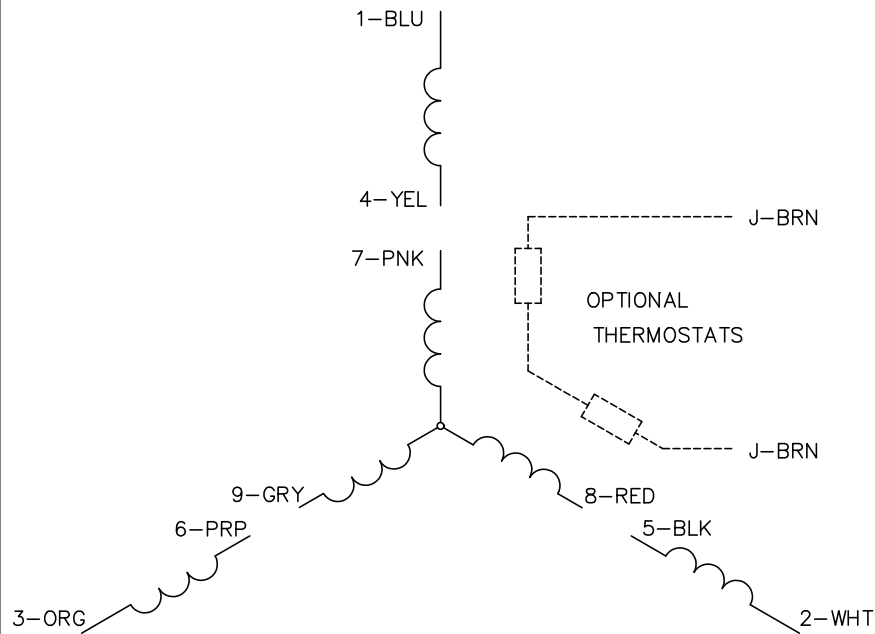
TORQUES (LB-FT): PO=5.62 PU=2.68 LR=4.74 LRA=10.4



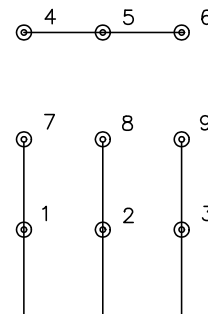
3/11/2026 ACPERF, record # 63249



CD0005

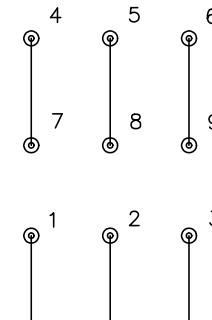


LOW VOLTAGE  
(2Y)



LINE

HIGH VOLTAGE  
(1Y)



LINE

NOTES:

1. INTERCHANGE ANY TWO LINE LEADS TO REVERSE ROTATION.
2. OPTIONAL THERMOSTATS ARE PROVIDED WHEN SPECIFIED.
3. ACTUAL NUMBER OF INTERNAL PARALLEL CIRCUITS MAY BE A MULTIPLE OF THOSE SHOWN ABOVE.
4. LEAD COLORS ARE OPTIONAL. LEADS MUST ALWAYS BE NUMBERED AS SHOWN.

REV. DESC: REVISE TO SHOW OPTIONAL COLORS			
REV. LTR: E	BY: JLP	REVISED: 01/19/99 10:15	TDR: 0171435
S00000		FILE: AAA00005140	MDL: -
		MTL: -	

**BALDOR ELECTRIC Co.**

3PH, DV, 9 LEADS

CD0005