

BALDOR • RELIANCE

Customer information packet

CFSWDM3708T-E

5HP, 1165RPM, 3PH, 60HZ, 3756M, N

Class - None

Division - Not Applicable

Specifications

| | |
|--------------------------------|---|
| Enclosure | TEFC |
| Frame | 213TC |
| Frame Material | Stainless Steel |
| Frequency | 60.00 Hz |
| Motor Letter Type | Three Phase |
| Output @ Frequency | 5.000 HP @ 60 HZ |
| Phase | 3 |
| Synchronous Speed @ Frequency | 1200 RPM @ 60 HZ |
| Voltage @ Frequency | 230.0 V @ 60 HZ 460.0 V @ 60 HZ |
| XP Class and Group | None |
| XP Division | Not Applicable |
| Agency Approvals | CSA CSA EEV NEMA PREMIUM UR |
| Ambient Temperature | 40 °C |
| Auxillary Box | No Auxillary Box |
| Auxillary Box Lead Termination | None |
| Base Indicator | Rigid |
| Bearing Grease Type | Polyrex EM (-20F +300F) |
| Blower | None |
| Current @ Voltage | 7.400 A @ 460.0 V 15.500 A @ 208.0 V 14.800 A @ 230.0 V |
| Design Code | A |
| Drip Cover | No Drip Cover |
| Duty Rating | CONT |
| Efficiency @ 100% Load | 89.5 % |
| Electrically Isolated Bearing | Not Electrically Isolated |
| Feedback Device | NO FEEDBACK |
| Front Shaft Indicator | None |

Part detail

| | |
|--------------|------------|
| Revision | C |
| Type | AC |
| Mech. spec. | 37Q242 |
| Base | |
| Status | PRD/A |
| Elec. spec. | 37WGZ663 |
| Layout | 37LYQ242 |
| Eff. date | 09-22-2023 |
| CD Diagram | CD0005 |
| Poles | 06 |
| Leads | 9#14 |
| Proprietary | False |
| Created date | 01-05-2021 |

| | |
|-------------------------------|----------------------------|
| Heater Indicator | No Heater |
| High Voltage Full Load Amps | 7.4 a |
| Insulation Class | F |
| Inverter Code | Inverter Ready |
| KVA Code | R |
| Lifting Lugs | Standard Lifting Lugs |
| Locked Bearing Indicator | Locked Bearing |
| Motor Lead Quantity/Wire Size | 9 @ 14 AWG |
| Motor Lead Termination | Flying Leads |
| Motor Standards | NEMA |
| Motor Type | 3756M |
| Mounting Arrangement | F1 |
| Number of Poles | 6 |
| Overall Length | 22.12 IN |
| Power Factor | 71 |
| Product Family | WD All SD Non-Encapsulated |
| Pulley End Bearing Type | Sealed Bearing |
| Pulley Face Code | C-Face |
| Pulley Shaft Indicator | Standard |
| Rodent Screen | None |
| RoHS Status | ROHS COMPLIANT |
| Service Factor | 1.15 |
| Shaft Diameter | 1.375 IN |
| Shaft Ground Indicator | No Shaft Grounding |
| Shaft Rotation | Reversible |
| Shaft Slinger Indicator | No Slinger |
| Speed | 1165 rpm |
| Speed Code | Single Speed |
| Starting Method | Direct on line |
| Thermal Device - Bearing | None |
| Thermal Device - Winding | None |
| Vibration Sensor Indicator | No Vibration Sensor |
| Winding Thermal 1 | None |
| Winding Thermal 2 | None |

Nameplate

| NP4427AAA01 | | | | | | | | | | |
|--------------------|----------------------|----------------|-------------|-------------|----------------------|--------------|------------|------------|---|--|
| CAT # | CFSWDM3708T-E | | | | WT | 179 | LBS | | | |
| SPEC | 37Q242Z663G1 | | | | ENCL | TEFC | | | | |
| SER # | | | | | CC | | IP | 69 | | |
| HP | 5 | MAG CUR | | | 8/4 | | | | | |
| VOLTS | 230/460 | | | | NEMA NOM. EFF | | 89.5 | | | |
| AMPS | 14.8/7.4 | | | | PF | 71 | | | | |
| RATING | 40C AMB-CONT | | | | | | | | | |
| RPM | 1165 | | | | MAX RPM | | 1800 | | | |
| FRAME | 213TC | HZ | 60 | CODE | K | CLASS | H | | | |
| SER.F. | 1.15 | SF AMP | | | | PH | 3 | DES | A | |
| DE | 6307 | | ODE | 6307 | | | | | | |
| LUBRICATION | POLYREX EM | | | | | | | | | |
| ID LOGO | INVERTER TYPE | | VPWM | CHP | 60 | TO | 90 | 1.5:1 | | |
| ID LOGO | WK2 | 1.39 | CT | 30 | TO | 60 | 2:1 | | | |
| ID LOGO | SL HZ | 1.8 | VT | 6 | TO | 60 | 10:1 | | | |
| | | | | | QR | | | | | |
| YR | | | | | | | | | | |

Parts list

| Part number | Description | Quantity |
|--------------|--|----------|
| SA389266 | SA 37Q242Z663G1 | 1.000 ea |
| RA379637 | RA 37Q242Z663G1 | 1.000 ea |
| 37FN3002C01 | EXFN, PLASTIC, 6.00 OD, 1.155 ID | 1.000 ea |
| 35CB1017B01 | 37 MID SECT - 3 PC. CONDUIT BOX 1.00 NPT | 1.000 ea |
| RM1070A81 | O-RING, -043 VITON/FKM .070CS X 3.489ID | 1.000 ea |
| HA3424S64 | STUD - M6X1.0 THDS X 4.00" | 1.000 ea |
| 11XW1032G08 | 10-32 X .50, TAPTITE II, HEX WSHR SLTD U | 1.000 ea |
| HW3001B01 | BRASS CUP WASHER, FOR #10 SCREW | 1.000 ea |
| 37EP1920A03 | FREP, TEFC MACH - 307 BRG WD11/12 (STAIN | 1.000 ea |
| RM1070A48 | O-RING, .070 C.S. X 8.656 ID, VITON | 1.000 ea |
| HW4600F35 | 35 X 52 X 8 LIP SEAL, GRAPHITE INFUSED V | 1.000 ea |
| HW4600F34 | 35 X 53 X 4.5 AFX SEAL, GRAPHITE INFUSED | 1.000 ea |
| HW4500S33 | 1/8 NPT STAINLESS #304 SS PLUG | 4.000 ea |
| HW4500S33 | 1/8 NPT STAINLESS #304 SS PLUG | 4.000 ea |
| HW5100A08 | W3118-035 WVY WSHR (WB) | 1.000 ea |
| 37EP1925A01 | PUEP, MACH - 307 BRG WD11/12 (STAINLESS) | 1.000 ea |
| RM1070A48 | O-RING, .070 C.S. X 8.656 ID, VITON | 1.000 ea |
| HW4600F35 | 35 X 52 X 8 LIP SEAL, GRAPHITE INFUSED V | 1.000 ea |
| HW4600F34 | 35 X 53 X 4.5 AFX SEAL, GRAPHITE INFUSED | 1.000 ea |
| RM1070A47 | O-RING, -011 VITON/FKM .070CS X .301ID | 4.000 ea |
| 51XB1214S20 | 12-14X1.25 HXWSSLD SERTYB, SS | 1.000 ea |
| 37FH4000A45 | STAINLESS FAN COVER, NO GREASER SLOT (FO | 1.000 ea |
| 10XN1032FS06 | HEX HD CAP SCREW 10-32 X 3/8 SS FOOD SAF | 3.000 ea |
| 35CB1513A01 | 35-36-37 MACH. LID - 3 PC. CONDUIT BOX | 1.000 ea |
| RM1070A81 | O-RING, -043 VITON/FKM .070CS X 3.489ID | 1.000 ea |
| HW2502F21 | #303 SS,SQ KEY 5/16 X 2.375 | 1.000 ea |
| HA7000A02 | KEY RETAINER RING, 1 1/8 DIA, 1 3/8 DIA | 1.000 ea |
| MJ5001A27 | 32220KN GRAY SEALER *MIN BUY 4 QTS=1GAL | 0.005 qt |
| MJ5004A93 | FOOD GRADE (H1 RATED) ANTISEIZE THRD COM | 0.005 ea |
| HA1025A21 | WSHR,FELT .125" THK | 1.000 ea |
| HA5027A09 | DRAIN KIT,(2)HA4002A03 BAGGED W/LABEL | 1.000 ea |

| | | |
|------------|---|----------|
| MJ1000A02 | GREASE, POLYREX EM EXXON | 0.050 lb |
| WD5603A01 | KIT, CLOSED-END LEAD SPLICE (18-14GA) | 1.000 ea |
| HA3104FS31 | THRUBOLT, 5/16-18 X 15.875 SS FOOD SAFE | 4.000 ea |
| 37PA1074 | PALLET PACK GRP, PRINT BOX PK1026A06 | 1.000 ea |
| MN416A01 | TAG-INSTAL-MAINT no wire (2100bx)4/22 | 1.000 ea |
| FE-0000016 | ZTRG FE ASSEMBLY | 1.000 ea |
| PE-0000016 | ZRTG PE ASSEMBLY | 1.000 ea |

AC Induction Motor Performance Data

Record # 86054

Preliminary Data Sheet

| Winding: 37WGZ663-R001 | | Type: 3756M | | Enclosure: TEFC | |
|-------------------------------|--------------------------|----------------------------|--|-------------------------|--|
| Nameplate Data | | | 460 V, 60 Hz: High Voltage Connection | | |
| Rated Output (HP) | 5 | Full Load Torque | 22.57 LB-FT | | |
| Volts | 230/460 | Start Configuration | direct on line | | |
| Full Load Amps | 14.8/7.4 | Breakdown Torque | 77.17 LB-FT | | |
| R.P.M. | 1165 | Pull-up Torque | 44.95 LB-FT | | |
| Hz | 60 Phase | 3 | Locked-rotor Torque | 51.14 LB-FT | |
| NEMA Design Code | A KVA Code | R | Starting Current | 53.3 A | |
| Service Factor (S.F.) | 1.15 | No-load Current | 3.95 A | | |
| NEMA Nom. Eff. | 89.5 Power Factor | 71 | Line-line Res. @ 25°C | 1.43 Ω | |
| Rating - Duty | 40C AMB-CONT | | Temp. Rise @ Rated Load | 55°C | |
| S.F. Amps | | | Temp. Rise @ S.F. Load | 67°C | |
| | | | Locked-rotor Power Factor | 21.1 | |
| | | | Rotor inertia | 1.39 lb-ft ² | |

Load Characteristics 460 V, 60 Hz, 5 HP

| % of Rated Load | 25 | 50 | 75 | 100 | 125 | 150 | S.F. |
|------------------------|-----------|-----------|-----------|------------|------------|------------|-------------|
| Power Factor | 33 | 52 | 64 | 71 | 75 | 76 | 73 |
| Efficiency | 84 | 89.5 | 90.1 | 90 | 89.1 | 87.3 | 89.5 |
| Speed | 1193 | 1185 | 1176 | 1167 | 1157 | 1144 | 1161 |
| Line amperes | 4.26 | 4.99 | 6.11 | 7.38 | 8.81 | 10.57 | 8.24 |

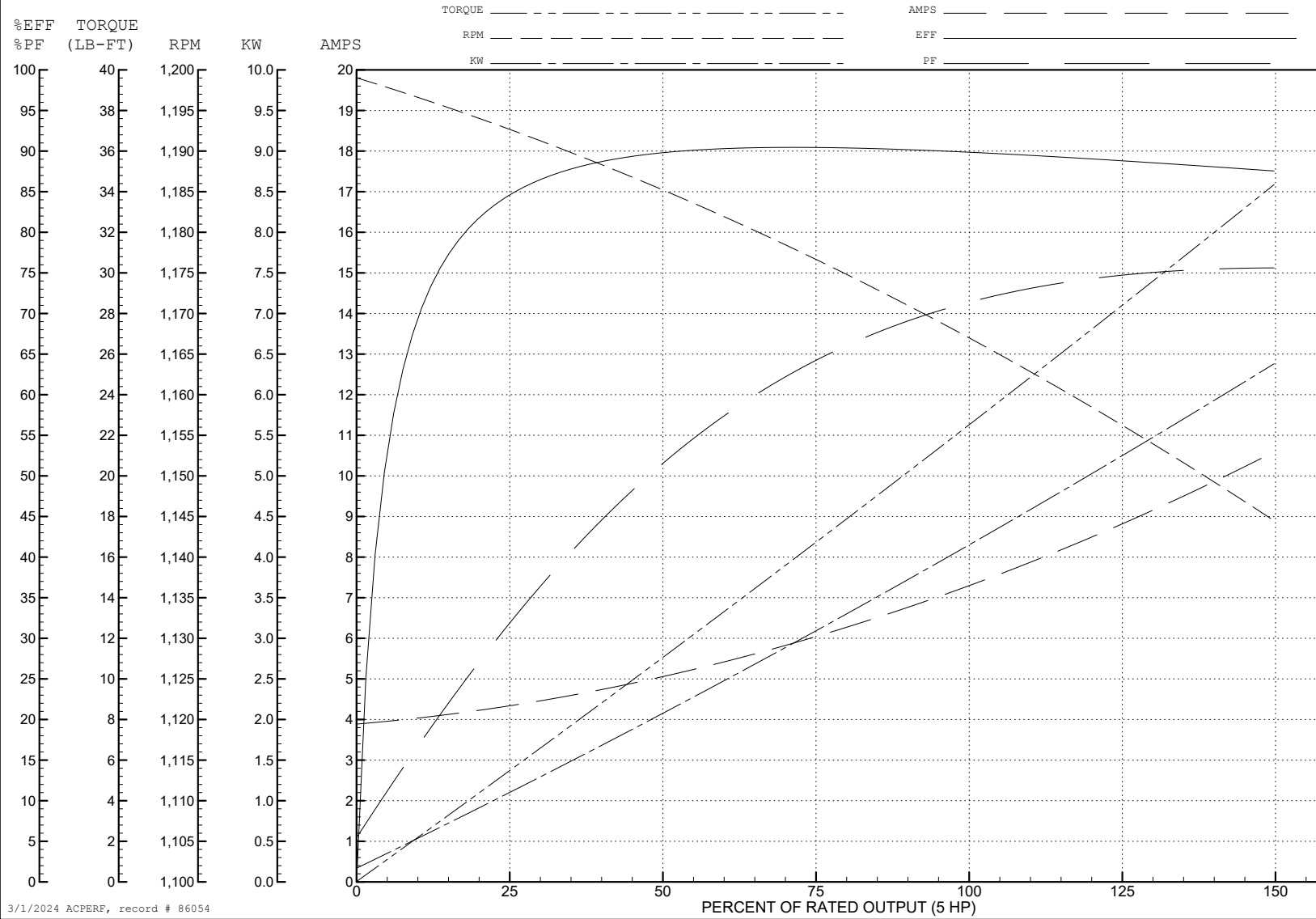
ABB Motors and Mechanical Inc.

WINDING # 37WGZ663

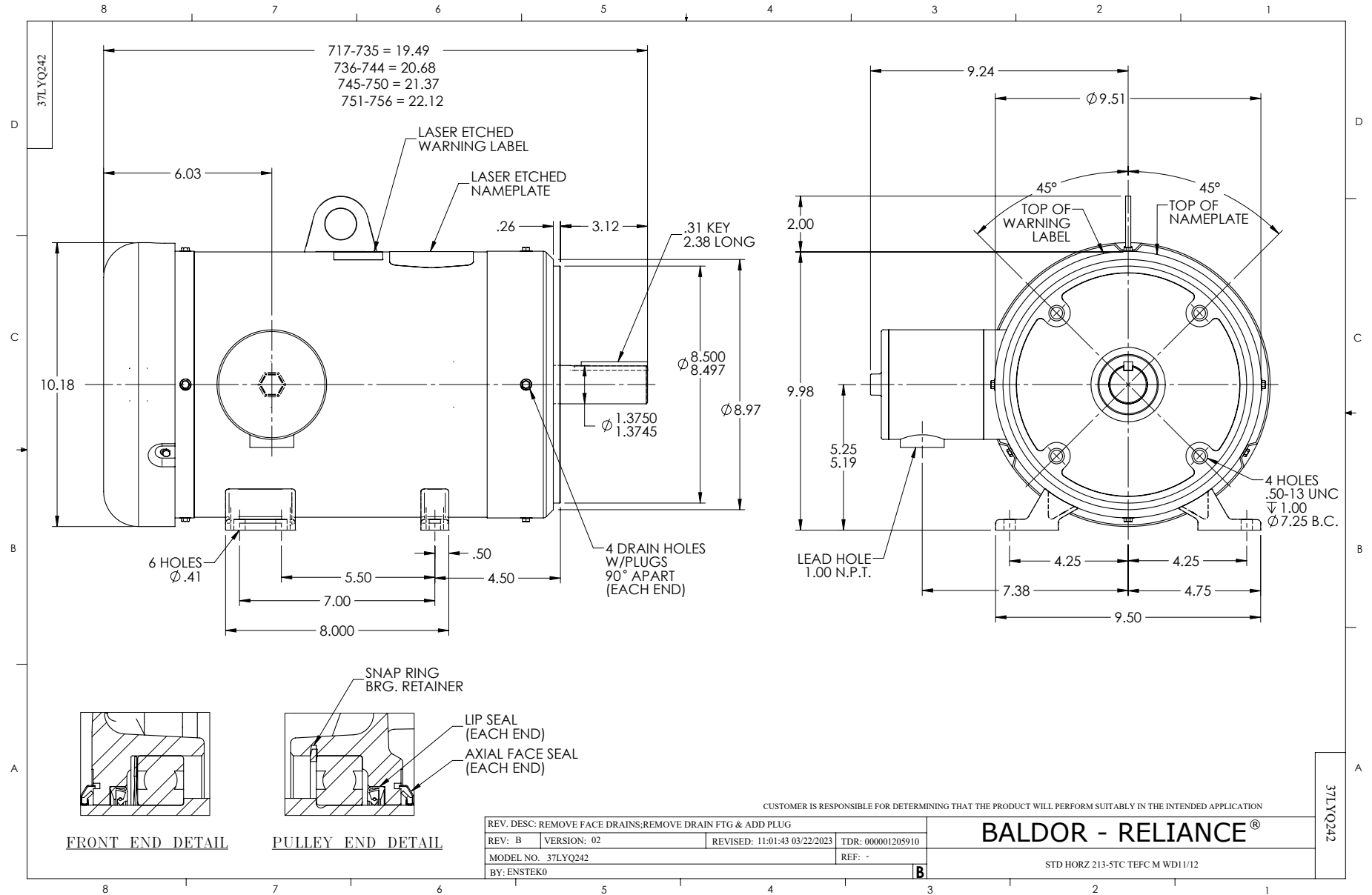
Typical performance - not guaranteed values.

5 HP 3 PH 60 HZ 1165 RPM 460 V 3756M

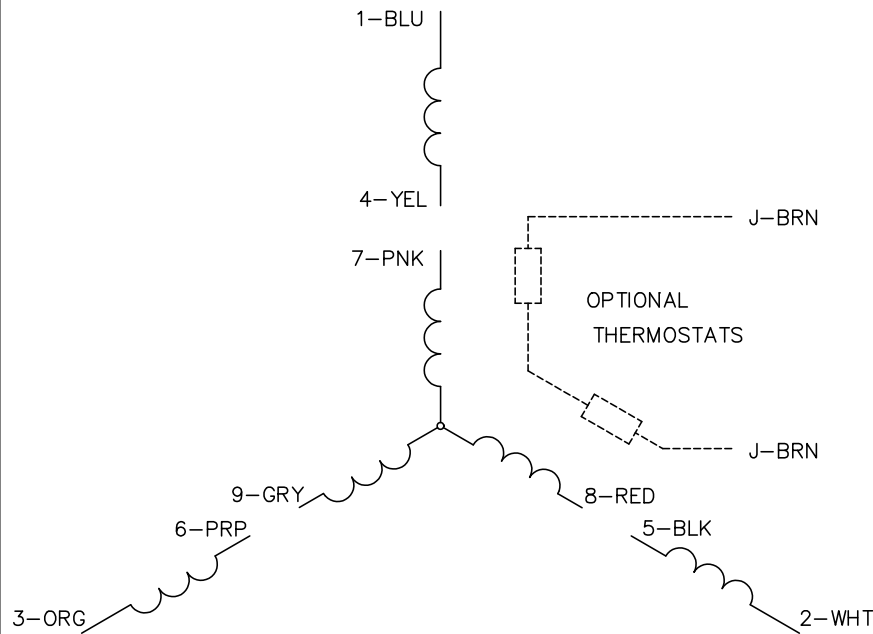
TORQUES (LB-FT): PO=77.17 PU=44.95 LR=51.14 LRA=53.3



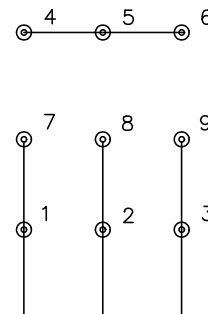
3/1/2024 ACPERF, record # 86054



CD0005

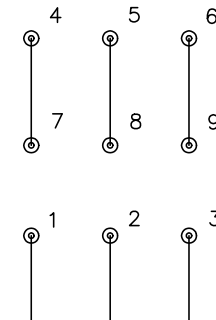


LOW VOLTAGE
(2Y)



LINE

HIGH VOLTAGE
(1Y)



LINE

NOTES:

1. INTERCHANGE ANY TWO LINE LEADS TO REVERSE ROTATION.
2. OPTIONAL THERMOSTATS ARE PROVIDED WHEN SPECIFIED.
3. ACTUAL NUMBER OF INTERNAL PARALLEL CIRCUITS MAY BE A MULTIPLE OF THOSE SHOWN ABOVE.
4. LEAD COLORS ARE OPTIONAL. LEADS MUST ALWAYS BE NUMBERED AS SHOWN.

| | | | |
|---|---------|-------------------------|--------------|
| REV. DESC: REVISE TO SHOW OPTIONAL COLORS | | | |
| REV. LTR: E | BY: JLP | REVISED: 01/19/99 10:15 | TDR: 0171435 |
| S00000 | | FILE: AAA00005140 | MDL: - |
| | | MTL: - | |

BALDOR ELECTRIC Co.

3PH, DV, 9 LEADS

CD0005