

ABB BALDOR RELIANCE III

Customer information packet CFSWDM41908T

68M 2P TEFC HOR 284TSC S/P9-11 SE ALL SS

Specifications

Enclosure	TEFC
Frame	284TSC
Frame Material	Stainless Steel
Frequency	60.00 Hz
Motor Letter Type	Three Phase
Output @ Frequency	30.000 HP @ 60 HZ
Phase	3
Synchronous Speed @ Frequency	3600 RPM @ 60 HZ
Voltage @ Frequency	230.0 V @ 60 HZ 460.0 V @ 60 HZ
Agency Approvals	CSA UR NEMA PREMIUM
Ambient Temperature	40 °C
Auxiliary Box	NO AUXILLARY BOX
Auxiliary Box Lead Termination	None
Base Indicator	Rigid
Bearing Grease Type	Polyrex EM (-20F +300F)
Blower	None
Current @ Voltage	68.000 A @ 230.0 V 34.000 A @ 460.0 V
Design Code	A
Drip Cover	No Drip Cover
Duty Rating	CONT
Efficiency @ 100% Load	91.7 %
Electrically Isolated Bearing	Not Electrically Isolated
Feedback Device	NO FEEDBACK
Front Shaft Indicator	None
Heater Indicator	No Heater
High Voltage Full Load Amps	34.0 a
Insulation Class	H
Inverter Code	Inverter Ready

Part Detail

Revision	J
Type	AC
Mech. spec.	40E464
Base	
Status	PRD/A
Elec. spec.	40WGX293
Layout	40LYE464
Eff. date	09-22-2023
CD Diagram	CD0180
Poles	02
Leads	9#10
Proprietary	False
Created date	07-10-2018

KVA Code	J
Lifting Lugs	Standard Lifting Lugs
Locked Bearing Indicator	Locked Bearing
Motor Lead Quantity/Wire Size	9 @ 10 AWG
Motor Lead Termination	Flying Leads
Motor Standards	NEMA
Motor Type	4068M
Mounting Arrangement	F1
Number of Poles	2
Overall Length	26.77 IN
Power Factor	90
Product Family	WD All SD Non-Encapsulated
Pulley End Bearing Type	Ball
Pulley Face Code	C-Face
Pulley Shaft Indicator	Standard
Rodent Screen	None
RoHS Status	ROHS COMPLIANT
Service Factor	1.15
Shaft Diameter	1.625 IN
Shaft Ground Indicator	No Shaft Grounding
Shaft Rotation	Reversible
Shaft Slinger Indicator	No Slinger
Speed	3540 rpm
Speed Code	Single Speed
Starting Method	Direct on line
Thermal Device - Bearing	None
Thermal Device - Winding	None
Vibration Sensor Indicator	No Vibration Sensor
Winding Thermal 1	None
Winding Thermal 2	None

Nameplate

NP4427AAA05

CAT #	CFSWDM41908T	LBS	
SPEC	40E464X293G1	ENCL	TEFC
SER #		CC	010A IP 69
HP	30	MAG CUR	20/10
VOLTS	230/460	NEMA NOM. EFF	91.7
AMPS	68/34	PF	90
RATING	40C AMB-CONT		
RPM	3540	MAX RPM	5400
FRAME	286TSC	HZ	60
		CODE	J
		CLASS	H
SER.F.	1.15	SF AMP	
		PH	3
		DES	A
DE	6311	ODE	6311
LUBRICATION	POLYREX_SHC_102_EM		
ID LOGO	VPWM	CHP	60
		TO	90
			1.5:1
ID LOGO	WK2	2.92	CT
			30
		TO	60
			2:1
ID LOGO	SL HZ	1	VT
			6
		TO	60
			10:1
YR			QR

Parts List

Part number	Description	Quantity
SA358250	SA 40E464X293G1	1.000 ea
RA347300	RA 40E464X293G1	1.000 ea
37FN3002A03	EXFN, PLASTIC, 9.00 OD, 1.690 ID	1.000 ea
40CB1001A01	40 MACH. MID SECTION - 3 PC. CONDUIT BOX	1.000 ea
10XN2520S12	BOLT 1/4 - 20X 3/4 HEX HEAD SS (F/S)	4.000 ea
HW1001S25	WASHER, 1/4 SPLT LK, STAINLESS STEEL	4.000 ea
RM1070A82	O-RING, -055 VITON/FKM .070CS X 6.489 ID	1.000 ea
10XN2520G06	1/4 20X3/8 HX HD CAP, GREEN	1.000 ea
WD1000B16	T&B CX70TN OR L70P TERMINAL LUG	1.000 ea
40EP1901A02	FREP, MACH - 311 BRG WD11 SS	1.000 ea
RM1070A83	O-RING, VITON/FKM .070CS X 12.500 ID	1.000 ea
HW4500S33	1/8 NPT STAINLESS #304 SS PLUG	4.000 ea
HW4500S33	1/8 NPT STAINLESS #304 SS PLUG	4.000 ea
HW4600H05	55 X 75 X 8 LIP SEAL, GRAPHITE INFUSED V	1.000 ea
HW4600G75	55 X 75 X 5.5 AFS SEAL, GRAPHITE INFUSED	1.000 ea
HW4600H05	55 X 75 X 8 LIP SEAL, GRAPHITE INFUSED V	1.000 ea
HW4600G75	55 X 75 X 5.5 AFS SEAL, GRAPHITE INFUSED	1.000 ea
HW5100A13	W4627-047 WVY WSHR	1.000 ea
40EP1900A02	PUEP, MACH - 311 BRG WD11 SS	1.000 ea
RM1070A83	O-RING, VITON/FKM .070CS X 12.500 ID	1.000 ea
RM1070A78	O-RING, -012 VITON/FKM .070CS X .364ID	4.000 ea
40CB1500A01	40 MACH. LID - 3 PC. SS CONDUIT BOX	1.000 ea
RM1070A82	O-RING, -055 VITON/FKM .070CS X 6.489 ID	1.000 ea
51XB1214S20	12-14X1.25 HXWSSLD SERTYB, SS	1.000 ea
10FH4018A01	304 SS FAN HOUSING & BASE PLATE FOR HORZ	1.000 ea
10XN2520S08	SCREW, 1/4-20 X 1/2 HHCS SS	4.000 ea
HW2502G17	#303 SS,SQ KEY 3/8 X 1.875	1.000 ea
MJ5004A93	FOOD GRADE (H1 RATED) ANTISEIZE THRD COM	0.005 ea
MJ5001A27	32220KN GRAY SEALER *MIN BUY 4 QTS=1GAL	0.031 qt
HA5027A09	DRAIN KIT,(2)HA4002A03 BAGGED W/LABEL	1.000 ea
MJ1000B13	PETROLATUM, OR PETROLEUM JELLY	0.010 oz

MJ1000A107	GREASE, MOBIL SHC POLYREX 102 EM	0.050 lb
HW2502F10	KEY, 5/16 SQ X 1.000 303 STAIMLESS STEEL	1.000 ea
HA3105FS16	THRUBOLT, 3/8-16 X 18.750 SS FOOD SAFE	4.000 ea
WD4006A11	WIRE JOINT, 6-14 AWG, SILICONE FILLED	6.000 ea
40PA1000	PACKAGING GROUP	1.000 ea
MN416A01	TAG-INSTAL-MAINT no wire (2500 bx)11/25	1.000 ea
FE-0000022	ZRTG FE ASSEMBLY	1.000 ea
PE-0000013	ZRTG PE ASSEMBLY	1.000 ea

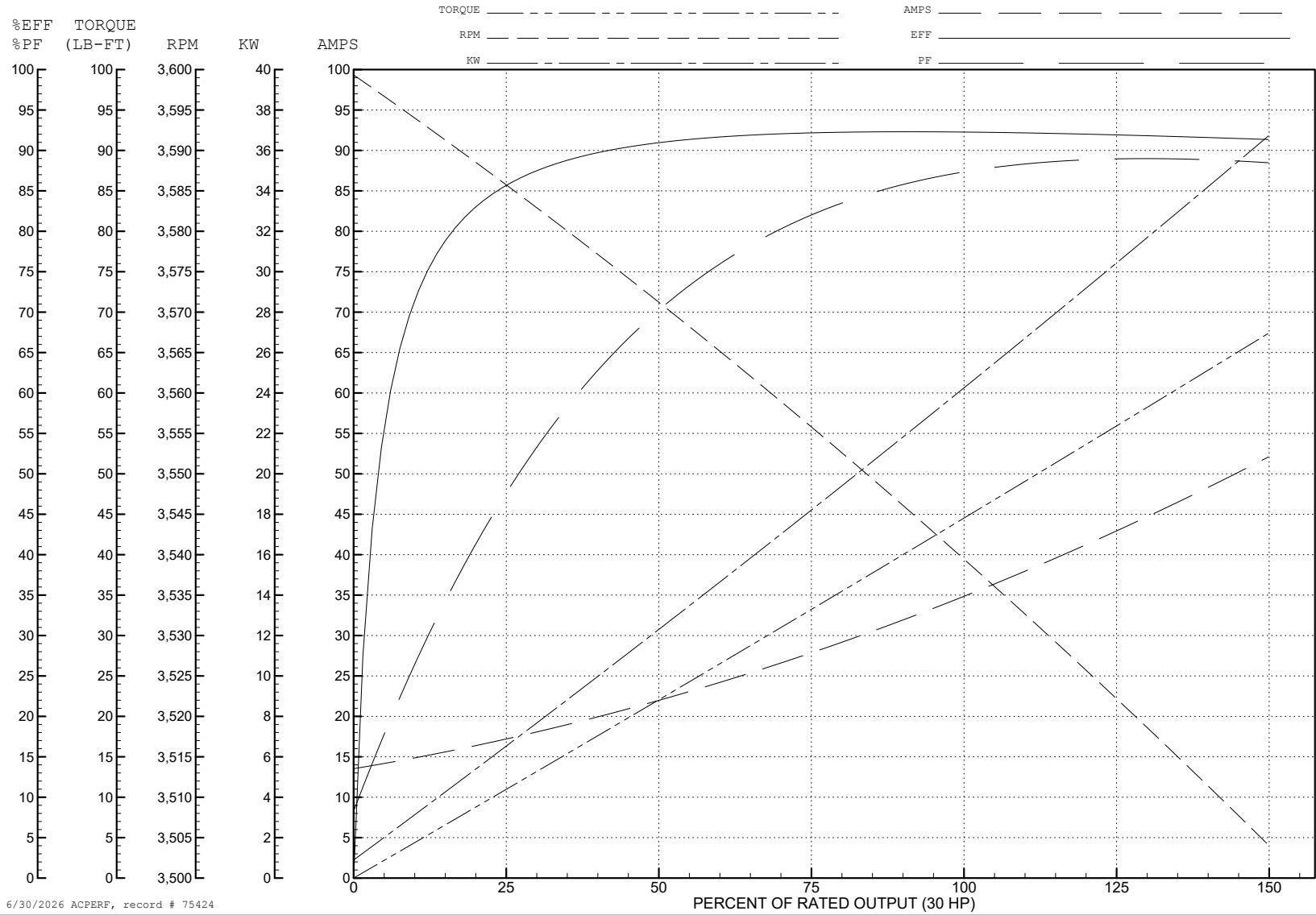
ABB Motors and Mechanical Inc.

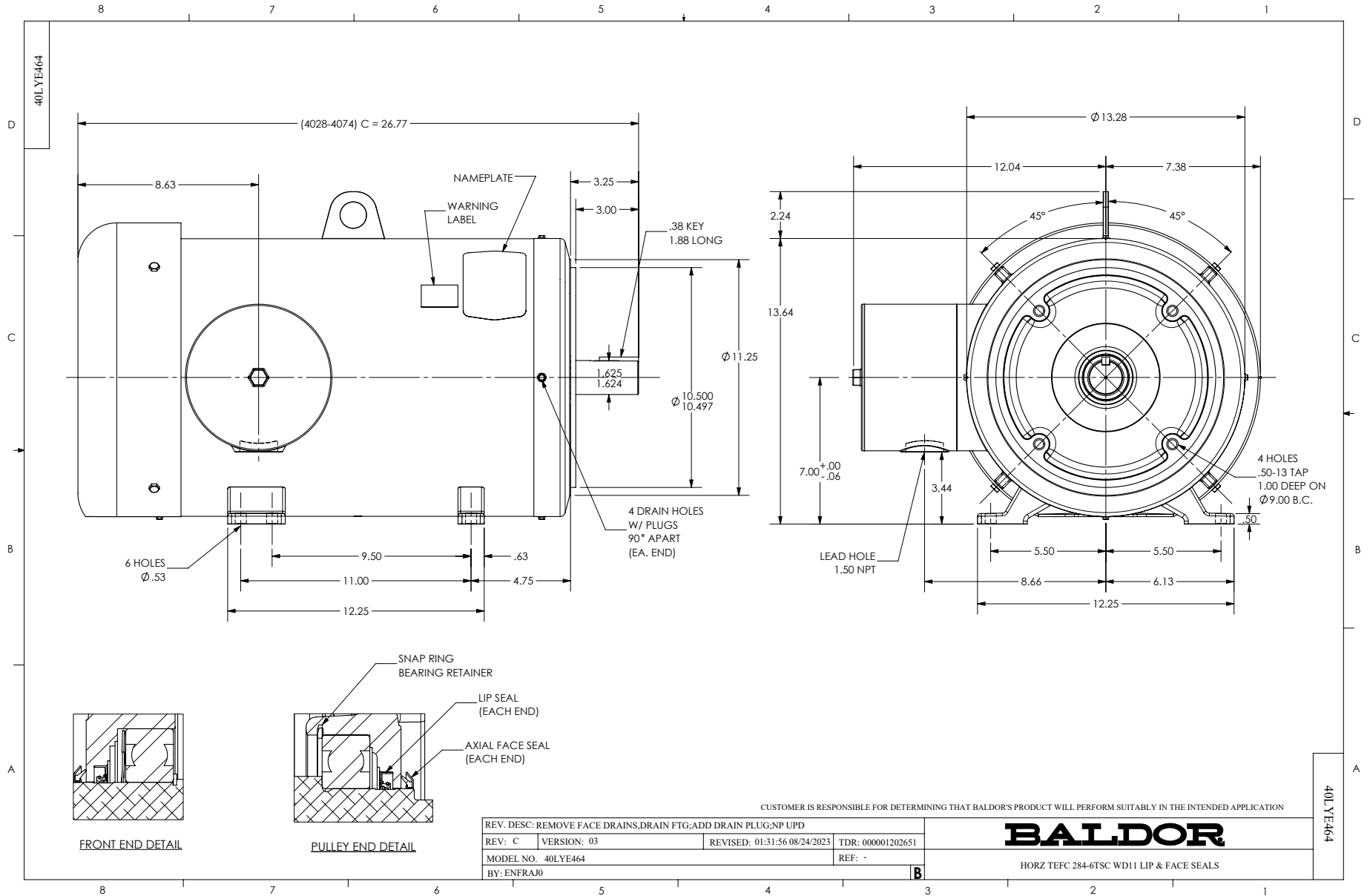
WINDING # 40WGx293

30 HP 3 PH 60 HZ 3540 RPM 460 V 4068M

Typical performance - not guaranteed values.

TORQUES (LB-FT): PO=166 PU=71.9 LR=99.7 LRA=293

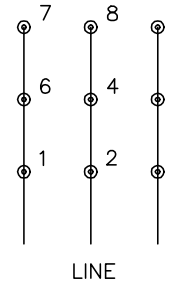




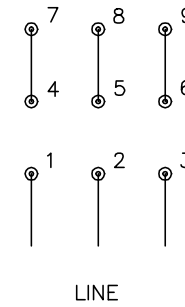
CD0180



LOW VOLTAGE
(2D)



HIGH VOLTAGE
(1D)



NOTES:

1. INTERCHANGE ANY TWO LINE LEADS TO REVERSE ROTATION.
2. OPTIONAL THERMOSTATS ARE PROVIDED WHEN SPECIFIED.
3. ACTUAL NUMBER OF INTERNAL PARALLEL CIRCUITS MAY BE A MULTIPLE OF THOSE SHOWN ABOVE.
4. LEAD COLORS ARE OPTIONAL. LEADS MUST ALWAYS BE NUMBERED AS SHOWN.

CD0180

REV. DESC: ADD CLASS CONN00000007		
REV. LTR: D	VERSION: 01	TDR: 000001099922
FILE: \AAA\00005\148	REVISED: 10: 25: 29 02/19/2019	BY: ENBRIRO
MTL: -	© □	

BALDOR - RELIANCE®

3PH, DV, 9 LEADS, DELTA CONNECTION

SH 1 of 1