

**BALDOR • RELIANCE**

---

# Customer information packet

## CFSWDNM3555-E

2HP, 3480RPM, 3PH, 60HZ, 56C, 3546M, TENV, F1, N

Class - None

Division - Not Applicable

Copyright © All product information within this document is subject to ABB Motors and Mechanical Inc. copyright © protection, unless otherwise noted.

3/1/2024 6:52:49 PM

## Specifications

Enclosure	TENV
Frame	56C
Frame Material	Stainless Steel
Frequency	60.00 Hz
Motor Letter Type	Three Phase
Output @ Frequency	2.000 HP @ 60 HZ
Phase	3
Synchronous Speed @ Frequency	3600 RPM @ 60 HZ
Voltage @ Frequency	230.0 V @ 60 HZ 460.0 V @ 60 HZ
XP Class and Group	None
XP Division	Not Applicable
Agency Approvals	UR CSA
Ambient Temperature	40 °C
Auxillary Box	No Auxillary Box
Auxillary Box Lead Termination	None
Base Indicator	Rigid
Bearing Grease Type	Polyrex EM (-20F +300F)
Blower	None
Current @ Voltage	2.400 A @ 460.0 V 4.800 A @ 230.0 V
Design Code	B
Drip Cover	No Drip Cover
Duty Rating	CONT
Efficiency @ 100% Load	88.5 %
Electrically Isolated Bearing	Not Electrically Isolated
Feedback Device	NO FEEDBACK
Front Face Code	Standard
Front Shaft Indicator	None
Heater Indicator	No Heater
High Voltage Full Load Amps	2.4 a

## Part detail

Revision	K
Type	AC
Mech. spec.	35E4735
Base	
Status	PRD/A
Elec. spec.	35WGL288
Layout	35LYE4735
Eff. date	08-14-2023
CD Diagram	CD0005
Poles	02
Leads	9#18,0#,0#,0# Y
Proprietary	False
Created date	07-18-2017

<b>Insulation Class</b>	H
<b>Inverter Code</b>	Not Inverter
<b>KVA Code</b>	N
<b>Lifting Lugs</b>	No Lifting Lugs
<b>Locked Bearing Indicator</b>	Locked Bearing
<b>Motor Finish</b>	UNPAINTED
<b>Motor Lead Exit</b>	Ko Box
<b>Motor Lead Quantity/Wire Size</b>	@ 0 AWG 9 @ 18 AWG
<b>Motor Lead Termination</b>	Flying Leads
<b>Motor Standards</b>	NEMA
<b>Motor Type</b>	3546M
<b>Mounting Arrangement</b>	F1
<b>Number of Poles</b>	2
<b>Overall Length</b>	15.04 IN
<b>Power Factor</b>	89
<b>Product Family</b>	WD All SS Encapsulated
<b>Pulley End Bearing Type</b>	Sealed Bearing
<b>Pulley Face Code</b>	C-Face
<b>Pulley Shaft Indicator</b>	Standard
<b>Rodent Screen</b>	None
<b>RoHS Status</b>	ROHS COMPLIANT
<b>Service Factor</b>	1.15
<b>Shaft Diameter</b>	0.625 IN
<b>Shaft Extension Location</b>	Pulley End
<b>Shaft Ground Indicator</b>	No Shaft Grounding
<b>Shaft Rotation</b>	Reversible
<b>Shaft Slinger Indicator</b>	No Slinger
<b>Speed</b>	3480 rpm
<b>Speed Code</b>	Single Speed
<b>Starting Method</b>	Direct on line
<b>Thermal Device - Bearing</b>	None
<b>Thermal Device - Winding</b>	None
<b>Vibration Sensor Indicator</b>	No Vibration Sensor

<b>Winding Thermal 1</b>	<b>None</b>
<b>Winding Thermal 2</b>	<b>None</b>

**Nameplate**

NP4427AAA01										
<b>CAT #</b>	CFSWDDNM3555-E			<b>WT</b>	61	<b>LBS</b>				
<b>SPEC</b>	35E4735L288G1			<b>ENCL</b>	TENV					
<b>SER #</b>				<b>CC</b>	010A	<b>IP</b>	69			
<b>HP</b>	2	<b>MAG CUR</b>		1.7/.85						
<b>VOLTS</b>	230/460			<b>NEMA NOM. EFF</b>		88.5				
<b>AMPS</b>	4.8/2.4			<b>PF</b>	89					
<b>RATING</b>	40C AMB-CONT									
<b>RPM</b>	3480			<b>MAX RPM</b>		5400				
<b>FRAME</b>	56C	<b>HZ</b>	60	<b>CODE</b>	N	<b>CLASS</b>	H			
<b>SER.F.</b>	1.15	<b>SF AMP</b>			<b>PH</b>	3	<b>DES</b>	B		
<b>DE</b>	6205	<b>ODE</b>	6205							
<b>LUBRICATION</b>	POLYREX EM									
<b>ID LOGO</b>	<b>INVERTER TYPE</b>		<b>VPWM</b>	<b>CHP</b>	60	<b>TO</b>	90	1.5:1		
<b>ID LOGO</b>	<b>WK2</b>	0.127	<b>CT</b>	15	<b>TO</b>	60	4:1			
<b>ID LOGO</b>	<b>SL HZ</b>	2	<b>VT</b>	3	<b>TO</b>	60	20:1			
				<b>QR</b>						
<b>YR</b>										

## Parts list

Part number	Description	Quantity
SA346303	SA 35E4735L288G1	1.000 ea
RA334813	RA 35E4735L288G1	1.000 ea
35CB1017A01	35/36 MID SECT - 3 PC. CONDUIT BOX 1/2 N	1.000 ea
HA3424S48	STUD - M6X1.0 THDS X 3.00"	1.000 ea
11XW1032G08	10-32 X .50, TAPTITE II, HEX WSHR SLTD U	1.000 ea
HW3001B02	BRASS CUP WASHER W/GROUND SYMBOL TAB,	1.000 ea
35EP1940A03	FRONT TENV 205 BRG (STAINLESS)	1.000 ea
RM1070A25	O-RING, VITON/FKM .070CS X 6.190ID	1.000 ea
HW4500S33	1/8 NPT STAINLESS #304 SS PLUG	4.000 ea
HW5100A05	WVY WSHR F/205 & 304 BRGS	1.000 ea
35EP1935A02	PULLEY 56C/143-5TC ENCL 205 BRG	1.000 ea
RM1070A25	O-RING, VITON/FKM .070CS X 6.190ID	1.000 ea
HW4600G01	.984X1.499X.25 VITON SLICK SERIES LIP	1.000 ea
HW4600E99	25 X 42 X 6 AFX SEAL, GRAPHITE INFUSED V	1.000 ea
HW4500S33	1/8 NPT STAINLESS #304 SS PLUG	4.000 ea
RM1070A26	O-RING,4.5MM I.D.X1.5MM C.S. (VITON)	4.000 ea
RM1070A81	O-RING, -043 VITON/FKM .070CS X 3.489ID	1.000 ea
35CB1513A01	35-36-37 MACH. LID - 3 PC. CONDUIT BOX	1.000 ea
RM1070A81	O-RING, -043 VITON/FKM .070CS X 3.489ID	1.000 ea
HW2502D13	SS KEY, 3/16 SQ X 1.375	1.000 ea
HA7000A04	KEY RETAINER 0.625 DIA SHAFTS	1.000 ea
MJ5001A27	32220KN GRAY SEALER *MIN BUY 4 QTS=1GAL	0.005 qt
MJ5004A93	FOOD GRADE (H1 RATED) ANTISEIZE THRD COM	0.005 ea
HA1025A21	WSHR,FELT .125" THK	1.000 ea
HA5027A09	DRAIN KIT,(2)HA4002A03 BAGGED W/LABEL	1.000 ea
MJ1000A02	GREASE, POLYREX EM EXXON	0.050 lb
WD5603A01	KIT, CLOSED-END LEAD SPLICE (18-14GA)	1.000 ea
HA3100FS61	THRUBOLT, 10-32 X 11.750 SS FOOD SAFE	4.000 ea
36PA1000	PKG GRP, PRINT PK1016A06	1.000 ea
MN416A01	TAG-INSTAL-MAINT no wire (2100bx)4/22	1.000 ea
PE-0000016	ZRTG PE ASSEMBLY	1.000 ea

FE-0000015

ZRTG FE ASSEMBLY

1.000 ea

---

**AC Induction Motor Performance Data**

Record # 51581

Typical performance - not guaranteed values

<b>Winding:</b> 35WGL288-R001		<b>Type:</b> 3546M		<b>Enclosure:</b> TENV	
<b>Nameplate Data</b>			<b>460 V, 60 Hz: High Voltage Connection</b>		
<b>Rated Output (HP)</b>	2	<b>Full Load Torque</b>	3.04 LB-FT		
<b>Volts</b>	230/460	<b>Start Configuration</b>	direct on line		
<b>Full Load Amps</b>	4.8/2.4	<b>Breakdown Torque</b>	17.3 LB-FT		
<b>R.P.M.</b>	3480	<b>Pull-up Torque</b>	6.76 LB-FT		
<b>Hz</b>	60 <b>Phase</b>	3	<b>Locked-rotor Torque</b>	14.8 LB-FT	
<b>NEMA Design Code</b>	<b>B KVA Code</b>	N	<b>Starting Current</b>	29.7 A	
<b>Service Factor (S.F.)</b>		1.15	<b>No-load Current</b>	0.876 A	
<b>NEMA Nom. Eff.</b>	88.5 <b>Power Factor</b>	89	<b>Line-line Res. @ 25°C</b>	5.3448 Ω	
<b>Rating - Duty</b>		40C AMB-CONT	<b>Temp. Rise @ Rated Load</b>	104°C	
<b>S.F. Amps</b>			<b>Temp. Rise @ S.F. Load</b>	128°C	

**Load Characteristics 460 V, 60 Hz, 2 HP**

<b>% of Rated Load</b>	<b>25</b>	<b>50</b>	<b>75</b>	<b>100</b>	<b>125</b>	<b>150</b>	<b>S.F.</b>
<b>Power Factor</b>	54	75	85	89	91	93	90
<b>Efficiency</b>	84.9	89.3	89.9	89.2	88.1	86.5	88.5
<b>Speed</b>	3568.9	3541.4	3511.5	3479.4	3445.1	3406.6	3459
<b>Line amperes</b>	1.06	1.41	1.86	2.37	2.92	3.52	2.7



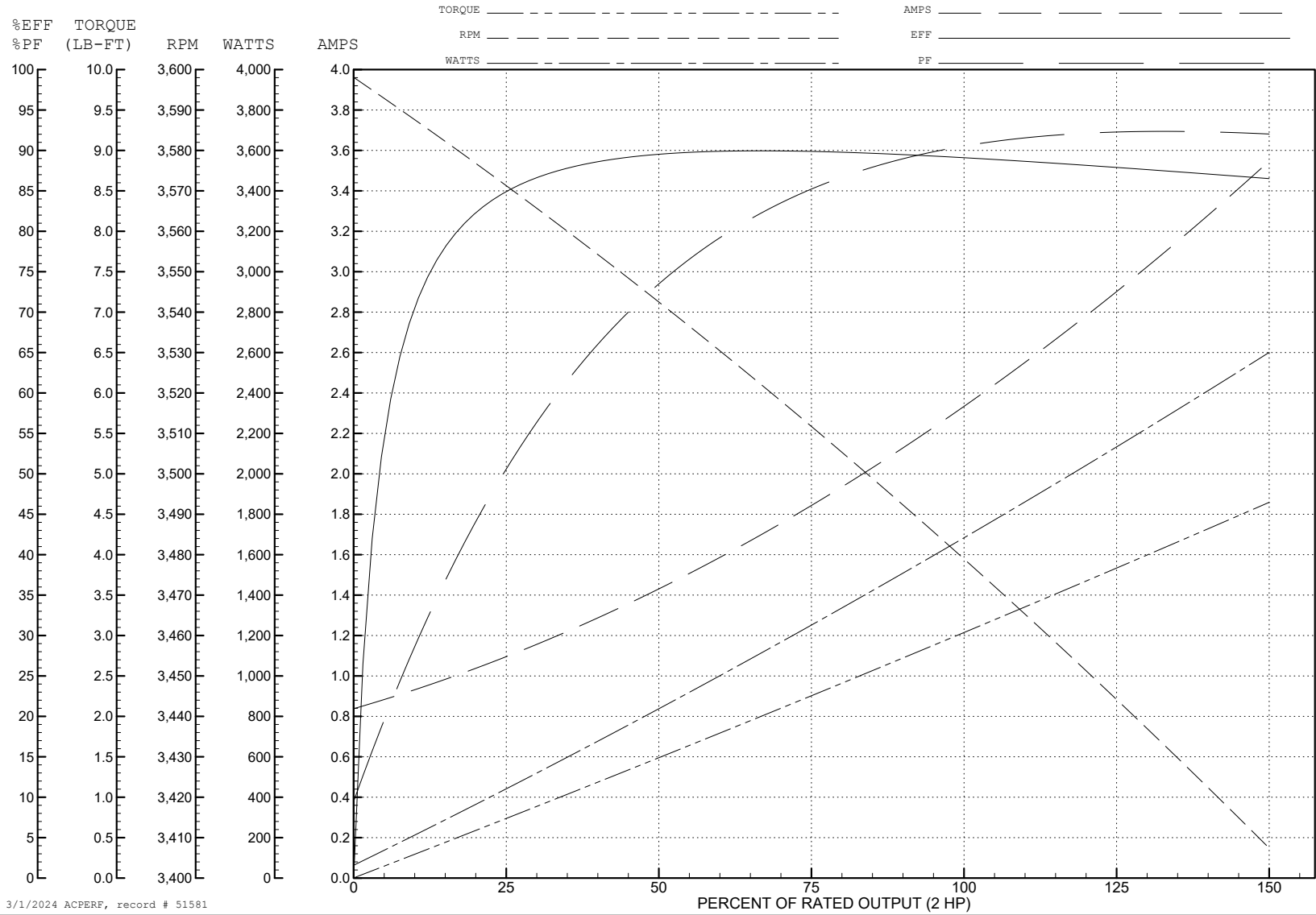
ABB Motors and Mechanical Inc.

WINDING # 35WGL288

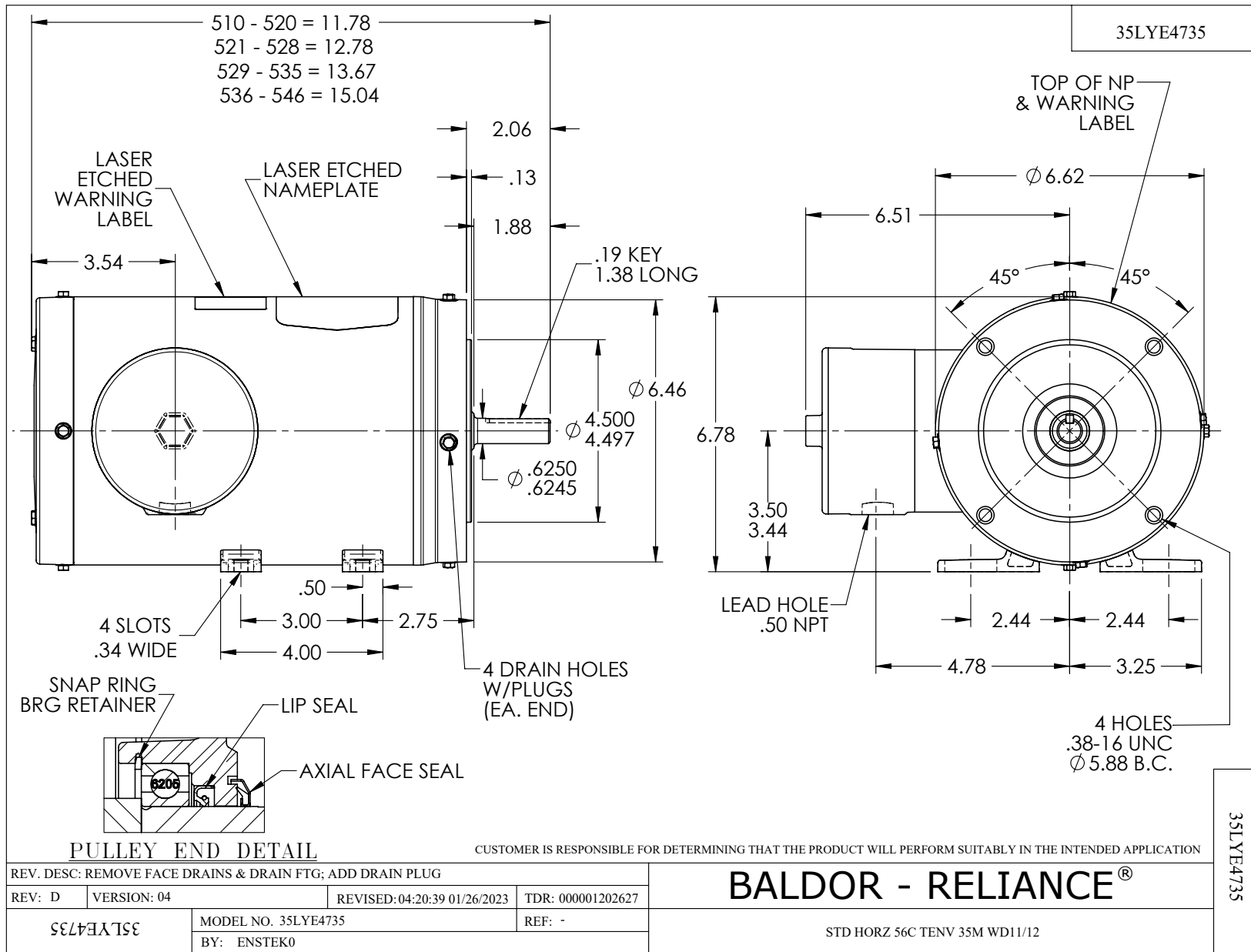
Typical performance - not guaranteed values.

2 HP 3 PH 60 HZ 3480 RPM 460 V 3546M

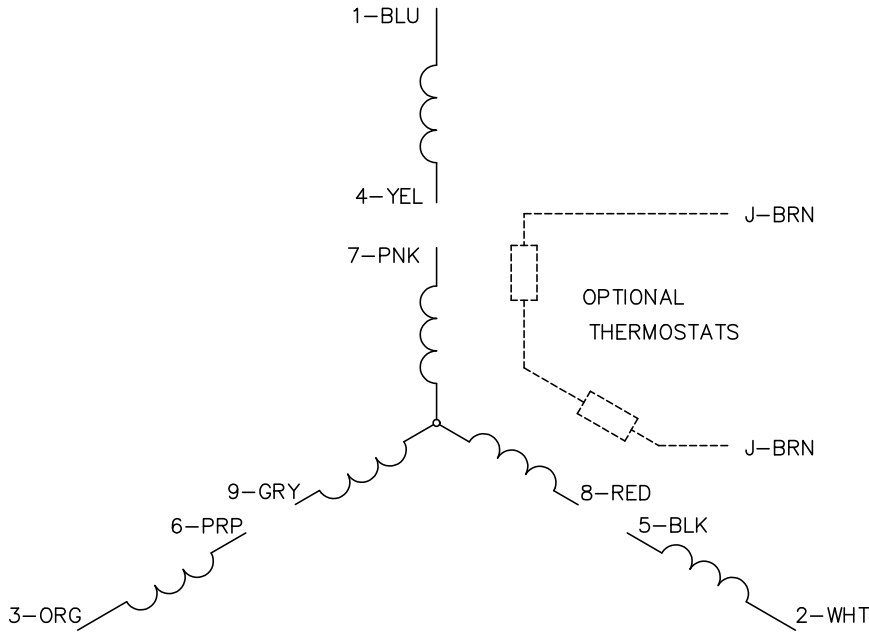
TORQUES (LB-FT): PO=17.3 PU=6.76 LR=14.8 LRA=29.7



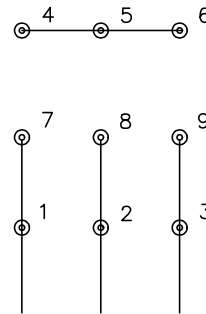
3/1/2024 ACPERF, record # 51581



CD0005

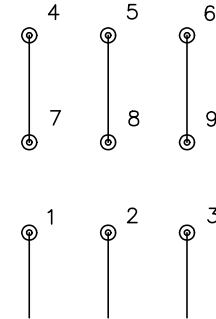


LOW VOLTAGE  
(2Y)



LINE

HIGH VOLTAGE  
(1Y)



LINE

NOTES:

1. INTERCHANGE ANY TWO LINE LEADS TO REVERSE ROTATION.
2. OPTIONAL THERMOSTATS ARE PROVIDED WHEN SPECIFIED.
3. ACTUAL NUMBER OF INTERNAL PARALLEL CIRCUITS MAY BE A MULTIPLE OF THOSE SHOWN ABOVE.
4. LEAD COLORS ARE OPTIONAL. LEADS MUST ALWAYS BE NUMBERED AS SHOWN.

CD0005

REV. DESC: REVISE TO SHOW OPTIONAL COLORS

REV. LTR: E BY: JLP REVISED: 01/19/99 10:15 TDR: 0171435

500000

FILE: AAA00005140

MDL: -

MTL: -

**BALDOR ELECTRIC Co.**

3PH, DV, 9 LEADS