



Customer information packet

CPX25766T

7.5HP, 1180//980RPM, 3PH, 60HZ, 254TY, XPFC, F

Class - CLI GP C,D; CLII GP E,F,G

Division - Division I

Specifications

Enclosure	XPFC
Frame	254TY
Frame Material	Iron
Frequency	50.00 Hz 60.00 Hz
Motor Letter Type	Three Phase
Output @ Frequency	7.500 HP @ 60 HZ 5.000 HP @ 50 HZ
Phase	3
Synchronous Speed @ Frequency	1200 RPM @ 60 HZ
Voltage @ Frequency	190.0 V @ 50 HZ 230.0 V @ 60 HZ 380.0 V @ 50 HZ 460.0 V @ 60 HZ
XP Class and Group	CLI GP C,D; CLII GP E,F,G
XP Division	Division I
Agency Approvals	CSA CSA EEV UR
Ambient Temperature	40 °C
Auxillary Box	No Auxillary Box
Auxillary Box Lead Termination	None
Base Indicator	Rigid
Bearing Grease Type	Polyrex EM (-20F +300F)
Blower	None
Constant Torque Speed Range	6
Current @ Voltage	9.600 A @ 380.0 V 23.000 A @ 208.0 V 22.000 A @ 230.0 V 19.200 A @ 190.0 V 11.000 A @ 460.0 V
Design Code	A

Part detail

Revision	G
Type	AC
Mech. spec.	
Base	
Status	PRD/A
Elec. spec.	09WGT118
Layout	09LYM363
Eff. date	06-29-2021
CD Diagram	CD0005
Poles	06
Leads	9#12
Proprietary	False
Created date	04-25-2019

Drip Cover	No Drip Cover
Duty Rating	CONT
Efficiency @ 100% Load	91.0 %
Electrically Isolated Bearing	Not Electrically Isolated
Enclosure Modification	Severe Duty Features
Feedback Device	NO FEEDBACK
Heater Indicator	No Heater
High Voltage Full Load Amps	9.6 a
Insulation Class	F
Inverter Code	Inverter Duty
IP Rating	IP55
KVA Code	J
Lifting Lugs	Standard Lifting Lugs
Locked Bearing Indicator	Locked Bearing
Max Speed	1800 rpm
Motor Lead Termination	Flying Leads
Motor Standards	NEMA
Motor Type	0954M
Mounting Arrangement	F1
Number of Poles	6
Overall Length	25.75 IN
Power Factor	70
Product Family	Chemical Process Features
Pulley Face Code	Standard
Rodent Screen	None
Service Factor	1.00
Shaft Diameter	1.625 IN
Shaft Ground Indicator	No Shaft Grounding
Shaft Rotation	Reversible
Speed	1180 rpm
Speed Code	Single Speed
Starting Method	Direct on line
Thermal Device - Bearing	None
Thermal Device - Winding	Normally Closed Thermostat

Vibration Sensor Indicator	No Vibration Sensor
Winding Thermal 1	None
Winding Thermal 2	None
XP Temp Code	T3C

Nameplate

NP2033XPSLEV

NO.		CC	010A				
S/N		TEMP CODE	T3C				
SPEC.	09-0000-1357	INV.TYPE	PWM				
CAT.NO.	CPX25766T	C HP FR	60	C HP TO	90		
HP	7.5//5	CT HZ FROM	6	CT HZ TO	60		
VOLTS	230/460//190/380	VT HZ FROM	6	VT HZ TO	60		
AMPS	22/11//19.2/9.6	MAG CUR					
RPM	1180//980	MX RPM	1800				
HZ	60//50	PH	3	CL	F	NOM.EFF.	91
SER.F.	1.00	DES	A	SL HZ	1	WK2	4.34
FRAME	254TY	RATING	40C AMB-CONT				
BLANK	55C AMB @ 1.00 SF, 60C RISE						
	1.15SF ON SINEWAVE		NEMA MG-1 PT.5,IP55				

Parts list

Part number	Description	Quantity
SA368862	SA 09-0000-1357	1.000 ea
RA358393	RA 09-0000-1357	1.000 ea
LB1115N	LABEL,LIFTING DEVICE (ON ROLLS)	1.000 ea
LC0005E01	SPL CONN.DIA./WARN.LABEL(LC0005/LB1119)	1.000 ea
NP2033XPSLEV	SS XP INV UL CSA-EEV CC CL-I GP-C&D	1.000 ea
85XU0407S04	4X1/4 U DRIVE PIN STAINLESS	2.000 ea
85XU0407S04	4X1/4 U DRIVE PIN STAINLESS	4.000 ea
MN416A01	TAG-INSTAL-MAINT no wire (2100bx)4/22	1.000 ea
LB1081Z	ALUM XP CAUTION LABEL (ZK PLANT ONLY-	1.000 ea
HW3201A01	1/2-13 EYEBOLT	1.000 ea
HW1002A63	WASHER, 5/8 HI-COLLAR SPRLCKWASHER	1.000 ea
09FH1004A48P	FAN COVER, MACH, W/GRSR, RLF & DRN HOLE	1.000 ea
HW1001A25	LOCKWASHER 1/4, ZINC PLT .493 OD, .255 I	3.000 ea
10XN2520K14	1/4-20 X .88 HEX GRD 5 (20001)	3.000 ea
LD7020D09	LEAD SET, 12AWG, 9 LEAD, 20" LONG LEADS	1.000 ea
09FN3001D01SP	EXTERNAL FAN, PLASTIC (COMES W/SCREW FRO	1.000 ea
HW2500A25	WOODRUFF KEY USA #1008 #BLOW CARBON STEE	1.000 ea
MJ1000A02	GREASE, POLYREX EM EXXON	0.080 lb
09EP1700A70LP5	FREP, MACH FOR GROUP C & GROUP E MTRS	1.000 ea
10XN3816K28	3/8-16 X 1.75 HEX HD CAP SCREW, GRADE 5	4.000 ea
HW1001A38	LOCKWASHER 3/8, ZINC PLT .688 OD, .382 I	4.000 ea
HA2009A39	SLINGER FOR GROUP E MTRS - 208 BRG.	1.000 ea
80XN0632A10	SET SCREW,#6-32 X .62 LG.HEX SOC. HD.	2.000 ea
HW5100A08	W3118-035 WVY WSHR (WB)	1.000 ea
HA4017A03	.125 X 1.75 GREASE EXT (F/S)	1.000 ea
HA4017A08	.125X3.50 GREASER EXTEN.	1.000 ea
HW4019A01	PIPE COUPLING 1/8 NPT,STEEL,ZINC COATING	1.000 ea
HA4051A00	PLASTIC CAP FOR GREASE FITTING	1.000 ea
HW4500A21	1618BALEMITE FITTING 825 UNIVERSAL	1.000 ea
HW4500A20	1/8NPT SL PIPE PLUG	1.000 ea
HW4505A02	BREATHER/DRAIN-EXP PROOF-.250-18 PTF AIS	1.000 ea

HW3023E06	.125 X .625 SPIRAL SPRING PIN	1.000 ea
09EP1707A26P	PUEP MACH, NON-XP; EPOXY PRIMER	1.000 ea
HW1001A38	LOCKWASHER 3/8, ZINC PLT .688 OD, .382 I	4.000 ea
10XN3816K28	3/8-16 X 1.75 HEX HD CAP SCREW, GRADE 5	4.000 ea
HA2009A38	SLINGER FOR GROUP E MTRS - 309 BRG.	1.000 ea
80XN0632A10	SET SCREW,#6-32 X .62 LG.HEX SOC. HD.	2.000 ea
10XN2520K36	1/4-20 X 2.25" HX HD SCRWGRADE 5, ZINC P	4.000 ea
HA4051A00	PLASTIC CAP FOR GREASE FITTING	1.000 ea
HW4500A03	GREASE FITTING, .125 NPT 1610(ALEMITE) 8	1.000 ea
HW4500A20	1/8NPT SL PIPE PLUG	1.000 ea
HW4505A02	BREATHER/DRAIN-EXP PROOF-.250-18 PTF AIS	1.000 ea
HW3023E06	.125 X .625 SPIRAL SPRING PIN	1.000 ea
09CB1003A01P	KOBX, MACH 1.25 NPT GROUP C MTRS PRIMED	1.000 ea
10XN3118K24	5/16-18 X 1.50" HEX HD, GRADE 5	4.000 ea
HW1001A31	LOCKWASHER 5/16, ZINC PLT.591 OD, .319 I	4.000 ea
WD1000B25	GND LUG, BURNDY L125HP OR T&B L125HP-BB	1.000 ea
10XN3118K12	5/16-18 X .75 GRADE 5, ZINC PLATED	1.000 ea
HW1001A31	LOCKWASHER 5/16, ZINC PLT.591 OD, .319 I	1.000 ea
09CB1502A01P	CONDUIT BOX LID MACH. GROUP C MTRS W/EP	1.000 ea
84XN5013J24	1/2-13 X 1-1/2 HEX SOCKET HD CAP SCREW	6.000 ea
HW1001A50	LOCKWASHER 1/2, ZINC PLT,.879 OD, .509 I	6.000 ea
MG1025G29	WILKOFAS, 789.229, DARK CHARCOAL GRAY	0.070 ga
40PA1005	PACKAGING GROUP, 09 STD	1.000 ea
HW2501G25	KEY, 3/8 SQ X 2.875	1.000 ea
MJ5000A09	EFI KIT #1578 (400 ML CARTRIDGE OF EFI	0.031 ea
MJ5001A27	32220KN GRAY SEALER *MIN BUY 4 QTS=1GAL	0.001 qt

AC Induction Motor Performance Data

Record # 57230

Typical performance - not guaranteed values

Winding: 09WGT118-R011		Type: 0954M	Enclosure: XPFC	
Nameplate Data			460 V, 60 Hz: High Voltage Connection	
Rated Output (HP)	7.5	Full Load Torque	33.3 LB-FT	
Volts	230/460	Start Configuration	direct on line	
Full Load Amps	22/11	Breakdown Torque	106 LB-FT	
R.P.M.	1180	Pull-up Torque	41.4 LB-FT	
Hz	60	Locked-rotor Torque	62.8 LB-FT	
NEMA Design Code	A	Starting Current	75.7 A	
Service Factor (S.F.)	1	No-load Current	5.97 A	
NEMA Nom. Eff.	91	Line-line Res. @ 25°C	0.895 Ω	
Rating - Duty	40C AMB-CONT	Temp. Rise @ Rated Load	41°C	
		Locked-rotor Power Factor	25.8	
		Rotor inertia	4.34 LB-FT ²	

Load Characteristics 460 V, 60 Hz, 7.5 HP

% of Rated Load	25	50	75	100	125	150
Power Factor	34	53	64	70	74	75
Efficiency	81.3	88	89.6	89.7	89.4	88.3
Speed	1196	1192	1187	1183	1177	1171
Line amperes	6.46	7.57	9.19	11.2	13.3	15.9

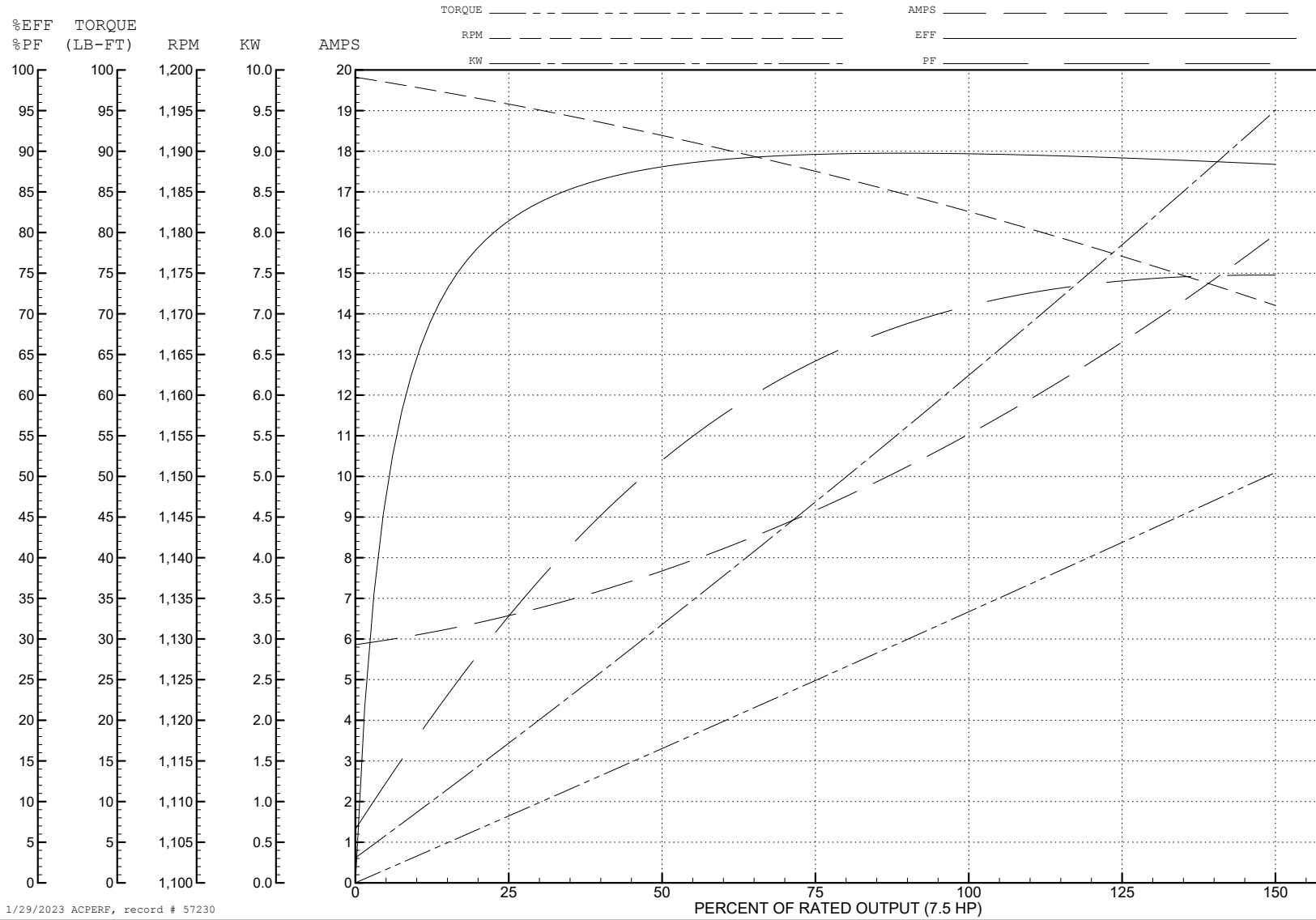
ABB Motors and Mechanical Inc.

WINDING # 09WGT118

7.5 HP 3 PH 60 HZ 1180 RPM 460 V 0954M

Typical performance - not guaranteed values.

TORQUES (LB-FT): PO=106 PU=41.4 LR=62.8 LRA=75.7



1/29/2023 ACPERF, record # 57230

AC Induction Motor Performance Data

Record # 75705

Typical performance - not guaranteed values

Winding: 09WGT118-R007		Type: 0954M	Enclosure: XPFC			
Nameplate Data			380 V, 50 Hz: High Voltage Connection			
Rated Output (HP)	7.5//5		Full Load Torque	26.49 LB-FT		
Volts	230/460//190/380		Start Configuration	direct on line		
Full Load Amps	22/11//19.2/9.6		Breakdown Torque	109 LB-FT		
R.P.M.	1180//980		Pull-up Torque	43.5 LB-FT		
Hz	60//50	Phase	3	Locked-rotor Torque	60.46 LB-FT	
NEMA Design Code	A		KVA Code	J	Starting Current	73.36 A
Service Factor (S.F.)	1				No-load Current	6 A
NEMA Nom. Eff.	91	Power Factor	70	Line-line Res. @ 25°C	0.895 Ω	
Rating - Duty	40C		AMB-CONT	Temp. Rise @ Rated Load	28°C	
S.F. Amps				Temp. Rise @ S.F. Load	34°C	
				Locked-rotor Power Factor	28.9	
				Rotor inertia	4.34 LB-FT ²	

Load Characteristics 380 V, 50 Hz, 5 HP

% of Rated Load	25	50	75	100	125	150
Power Factor	28	46	58	65	71	74
Efficiency	81.2	87.9	90.1	90.6	90.3	89.6
Speed	997	994	990	987	983	979
Line amperes	6.29	7.06	8.13	9.52	11.08	12.87

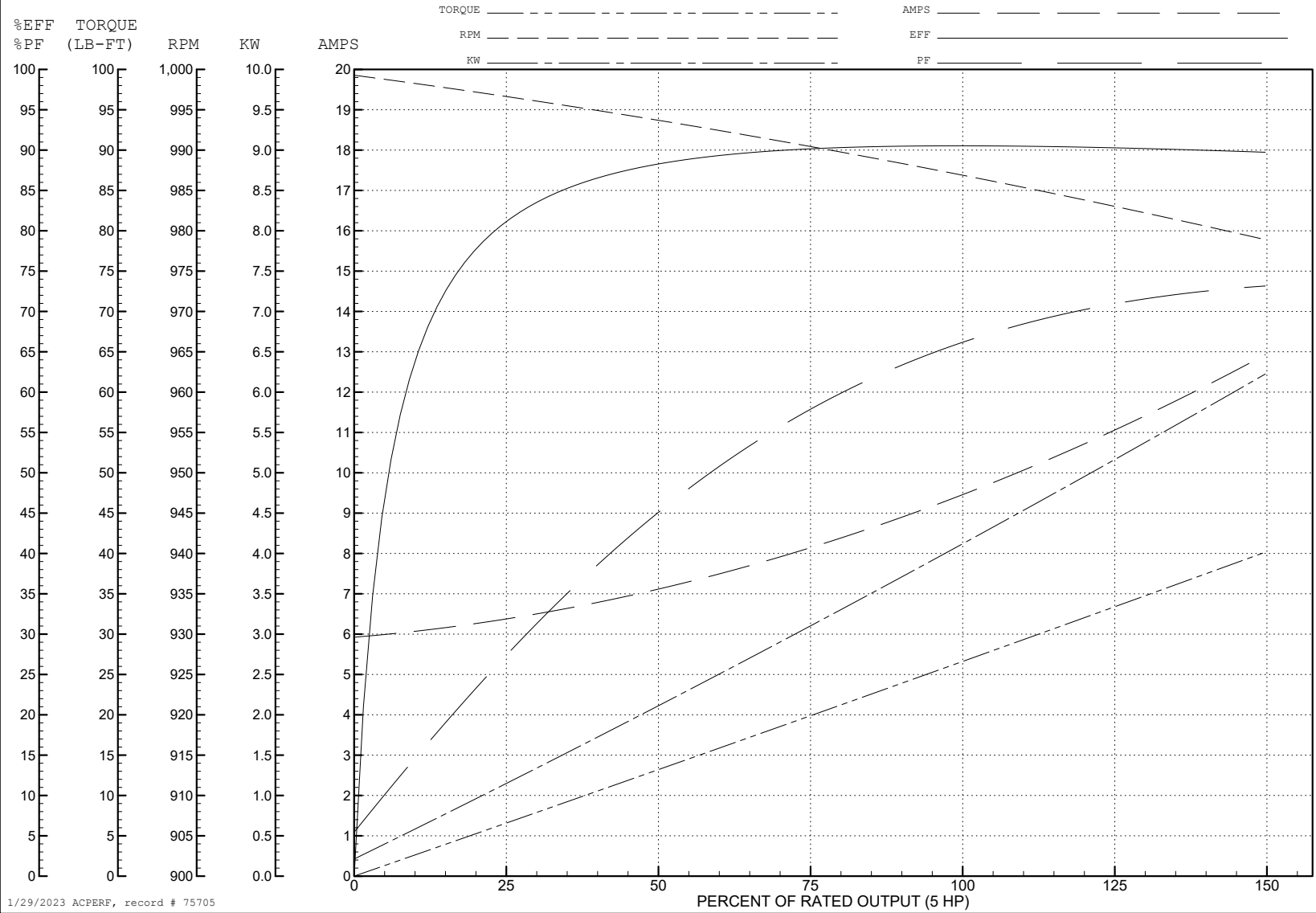
ABB Motors and Mechanical Inc.

WINDING # 09WGT118

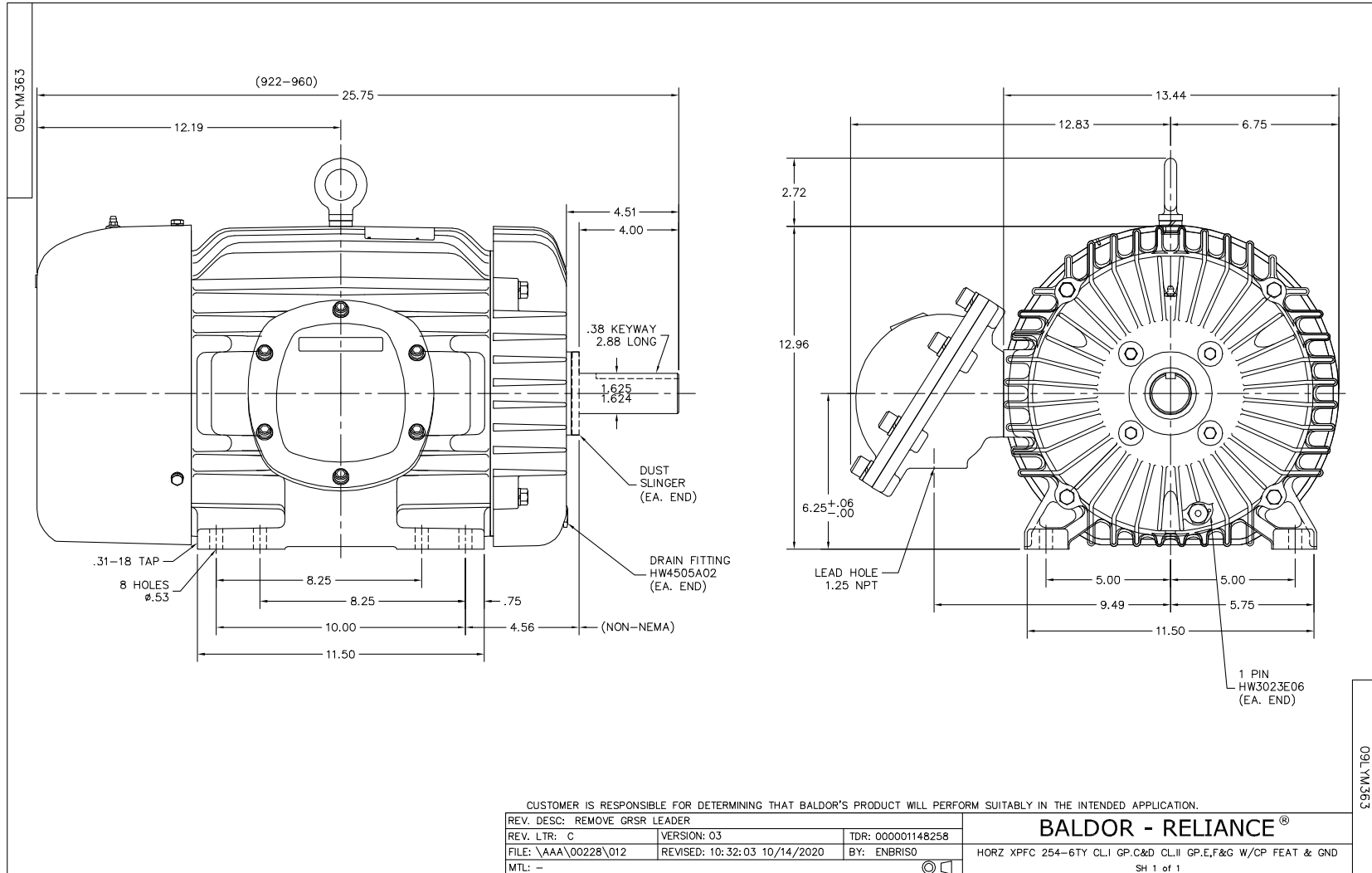
5 HP 3 PH 50 HZ 987 RPM 380 V 0954M

Typical performance - not guaranteed values.

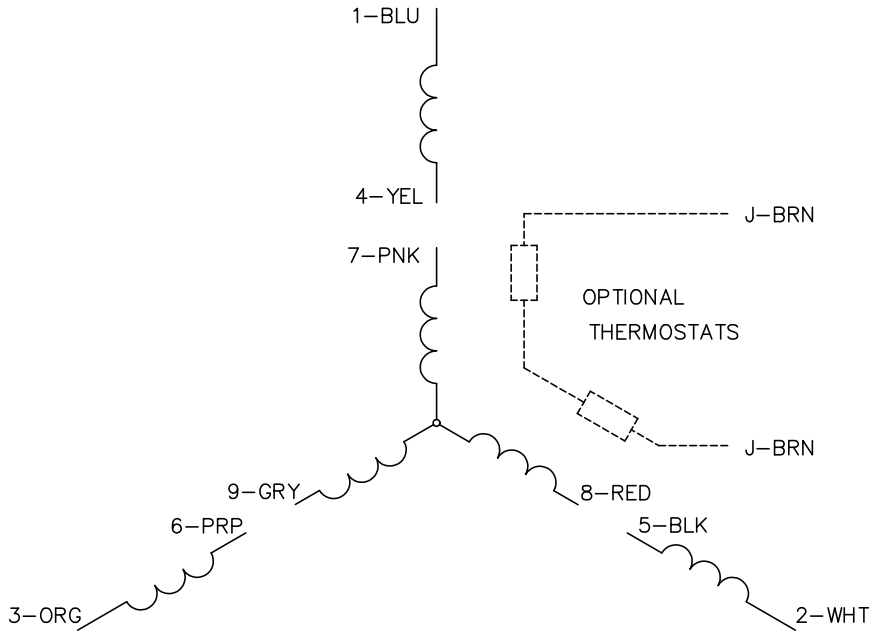
TORQUES (LB-FT): PO=109 PU=43.5 LR=60.46 LRA=73.36



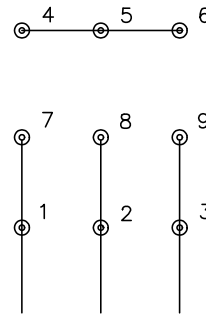
1/29/2023 ACPERF, record # 75705



CD0005

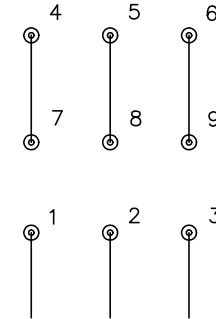


LOW VOLTAGE
(2Y)



LINE

HIGH VOLTAGE
(1Y)



LINE

NOTES:

1. INTERCHANGE ANY TWO LINE LEADS TO REVERSE ROTATION.
2. OPTIONAL THERMOSTATS ARE PROVIDED WHEN SPECIFIED.
3. ACTUAL NUMBER OF INTERNAL PARALLEL CIRCUITS MAY BE A MULTIPLE OF THOSE SHOWN ABOVE.
4. LEAD COLORS ARE OPTIONAL. LEADS MUST ALWAYS BE NUMBERED AS SHOWN.

CD0005

REV. DESC: REVISE TO SHOW OPTIONAL COLORS			
REV. LTR: E	BY: JLP	REVISED: 01/19/99 10:15	TDR: 0171435
S00000		FILE: AAA00005140	MDL: -
		MTL: -	

BALDOR ELECTRIC Co.

3PH, DV, 9 LEADS