

**BALDOR® • RELIANCE** 

**Product Information Packet**

**CXL050742A-50**

**.75HP, 1425RPM, 1PH, 50HZ, 56C, 3528L, XPFC, F1**

Part Detail							
Revision:	C	Status:	PRD/A	Change #:		Proprietary:	No
Type:	AC	Elec. Spec:	35WGS318	CD Diagram:	CD0008	Mfg Plant:	
Mech. Spec:		Layout:	35LYE365	Poles:	04	Created Date:	03-15-2021
Base:		Eff. Date:	06-28-2022	Leads:	6#18,1#16 #4TH		

Specs			
Catalog Number:	CXL050742A-50	Heater Indicator:	No Heater
Enclosure:	XPFC	Insulation Class:	B
Frame:	56C	Inverter Code:	Not Inverter
Frame Material:	Steel	IP Rating:	NONE
Motor Letter Type:	Cap Start, Induction Run	KVA Code:	J
Output @ Frequency:	.750 HP @ 50 HZ	Lifting Lugs:	No Lifting Lugs
Synchronous Speed @ Frequency:	1500 RPM @ 50 HZ	Locked Bearing Indicator:	Locked Bearing
Voltage @ Frequency:	110.0 V @ 50 HZ	Motor Lead Termination:	Flying Leads
	220.0 V @ 50 HZ	Motor Type:	3528L
XP Class and Group:	CLI GP D; CLII GP F,G	Mounting Arrangement:	F1
XP Division:	Division I	Power Factor:	76
Agency Approvals:	CSA	Product Family:	General Purpose
	UR	Pulley Face Code:	C-Face
Auxillary Box:	No Auxillary Box	Rodent Screen:	None
Auxillary Box Lead Termination:	None	Shaft Ground Indicator:	No Shaft Grounding
Base Indicator:	Rigid	Shaft Rotation:	Reversible
Bearing Grease Type:	Polyrex EM (-20F +300F)	Speed Code:	Single Speed
Blower:	None	Motor Standards:	NEMA

<b>Current @ Voltage:</b>	4.800 A @ 220.0 V	<b>Starting Method:</b>	Direct on line
	9.600 A @ 110.0 V	<b>Thermal Device - Bearing:</b>	None
<b>Design Code:</b>	-	<b>Thermal Device - Winding:</b>	None
<b>Drip Cover:</b>	No Drip Cover	<b>Vibration Sensor Indicator:</b>	No Vibration Sensor
<b>Duty Rating:</b>	CONT	<b>Winding Thermal 1:</b>	None
<b>Electrically Isolated Bearing:</b>	Not Electrically Isolated	<b>Winding Thermal 1 Location:</b>	EP
<b>Feedback Device:</b>	NO FEEDBACK	<b>Winding Thermal 2:</b>	None
		<b>XP Temp Code:</b>	T4

Nameplate NP0016XPSL			
NO.	<input type="text"/>	CC	<input type="text"/>
SER. #	<input type="text"/>		
SPEC	35-0000-1062		
CAT.NO.	CXL050742A-50		
H.P.	.75	T. CODE	T4
VOLTS	110/220		
AMPS	9.6/4.8		
R.P.M.	1425 35WGS318		
HZ	50	PH	1
SER.F.	1.00	DES	-
RATING	40C AMB-CONT		
FRAME	56C	NEMA NOM. EFF	70
USABLE AT 208V	<input type="text"/>		
BLANK	NEMA MG-1 PART 5, IP54		
		PF	76
		CLASS	B
		CODE	J

Parts List		
Part Number	Description	Quantity
SA393083	SA 35-0000-1062	1.000 EA
RA383701	RA 35-0000-1062	1.000 EA
LB1118	LABEL,WARNING (ROLL LABEL)	1.000 EA
LC0008	CONNECTION LABEL	1.000 EA
NP0016XPSL	SS XP UL CSA CC CL-I GP-D CL-II GP-F&G	1.000 EA
85XU0407S04	4X1/4 U DRIVE PIN STAINLESS	6.000 EA
MN416A01	TAG-INSTAL-MAINT no wire (2200bx) 4/22	1.000 EA
NP0018F	ALUM UL XP CONDUIT BOX NAMEPLATE	1.000 EA
TPMRJ30RX	THERMAL 1PH 0.75 AUT 120C	1.000 EA
51XT0632A06	6-32X3/8 TY23 HXWS SLDSR	2.000 EA
HA6001A01	THERMAL RETAINER (PLATED)	1.000 EA
NS2500A06	INSULATOR,AUTO THER PROT,W/PSA ON 1 SIDE	1.000 EA
35FH4005A01SP	IEC FH NO GREASER W/PRIMED	1.000 EA
51XW1032A06	10-32 X .38, TAPTITE II, HEX WSHR SLTD S	3.000 EA
35FN3002A05SP	EXFN, PLASTIC, 6.376 OD, .638 ID	1.000 EA
51XB1214A16	12-14X1.00 HXWSSLD SERTYB	1.000 EA
MJ1000A02	GREASE, POLYREX EM EXXON	0.050 LB
HA3104A08	THRUBOLT 5/16-18 X 9.375 X	4.000 EA
SP5051A64	MODEL 35 TORQ STATIONARY SWITCH FOR XP	1.000 EA
XY3118A12	5/16-18 HEX NUT DIRECTIONAL SERRATION	4.000 EA
35EP3700A01SP	FR ENDPLATE, XPFC	1.000 EA
HW5100A03	WAVY WASHER (W1543-017)	1.000 EA
HA6003A52	CLAMP, CAPACITOR, WHITE ZINC PLATED	2.000 EA
35EP3702A01SP	PU EP-205 BRG-35X-56C-143-5TC	1.000 EA

Parts List (continued)		
Part Number	Description	Quantity
HA3013A01	1/2-20X5/8 SPL.HX BOLT	2.000 EA
51XN1032A18	10-32 X 1 1/8 HX WS SL SR (ESKAY)	2.000 EA
HW3021C06	3/32 DI X .625 PIN (F/S)	2.000 EA
35CB3001A01SP	EXPL CONDUIT BOX, MACH, 1/2" PIPE TAP LE	1.000 EA
11XW1032G06	10-32 X .38, TAPTITE II, HEX WSHR SLTD U	1.000 EA
HW3001B01	BRASS CUP WASHER, FOR #10 SCREW	1.000 EA
35CB3500A01SP	CONDUIT BOX LID, MACH	1.000 EA
51XN2520A16	SCREW, HEX WS SLT, ZN, 1/4-20 X 1.00	4.000 EA
WD1000A15	3-520132-2 AMP FLAG (4M/RL NON-CANC/NON-	4.000 EA
51XW0832A07	8-32 X .44, TAPTITE II, HEX WSHR SLTD SE	2.000 EA
EC1189A02SP	61B2D120189NNBA ELEC CAP, 189-227MFD, 12	1.000 EA
EC1270A02SP	ELEC CAP, 270-324 MFD, 125V, 1.48D X 3.	1.000 EA
MG1500Y02	WILKOPON PRIMER YELLOW	0.022 GA
MG1025G29	WILKOFAS, 789.229, DARK CHARCOAL GRAY	0.022 GA
36PA1000	PKG GRP, PRINT PK1016A06	1.000 EA
HW2501D13	KEY, 3/16 SQ X 1.375	1.000 EA
HA7000A04	KEY RETAINER 0.625 DIA SHAFTS	1.000 EA

**AC Induction Motor Performance Data**

Record # 50517

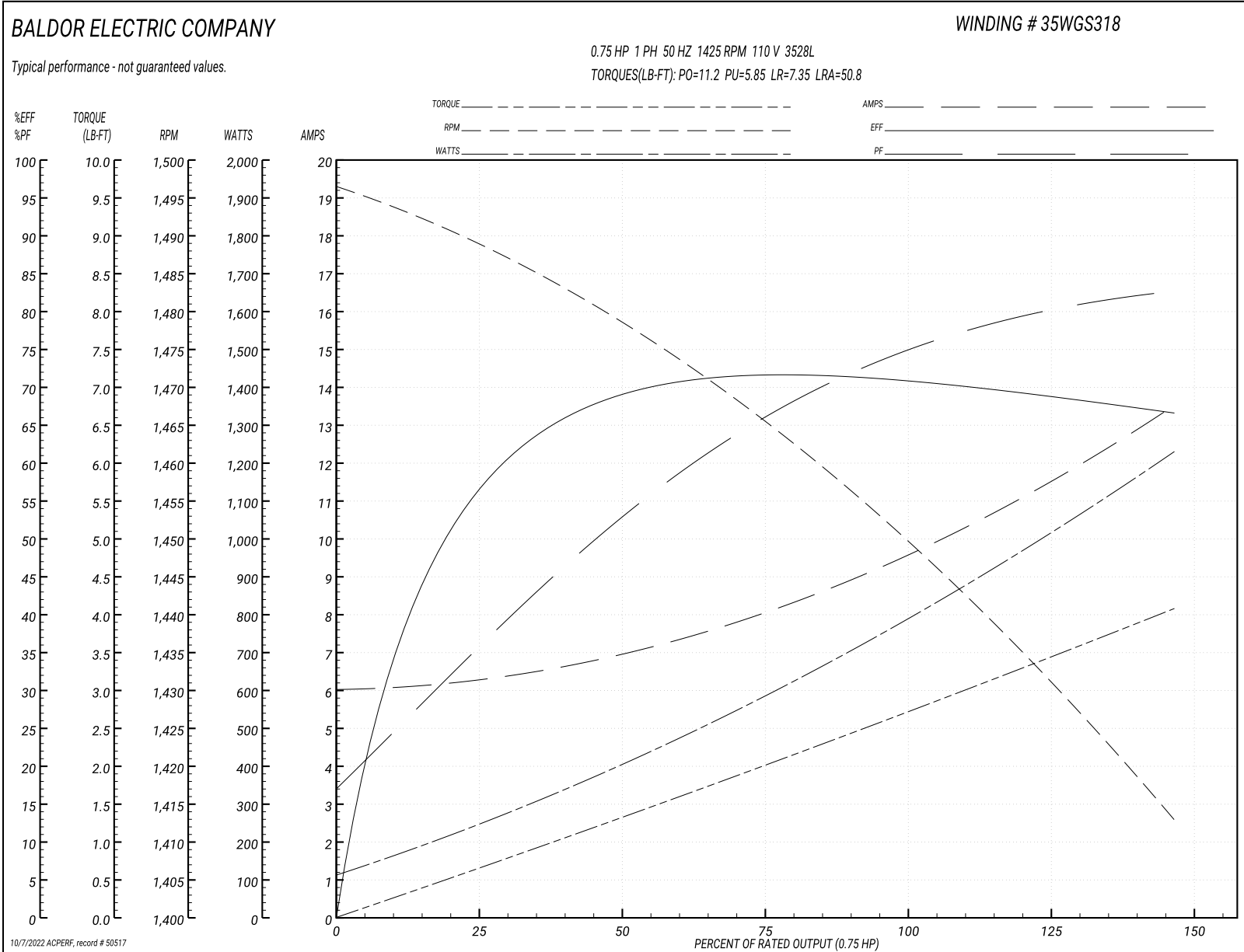
Typical performance - not guaranteed values

Winding: 35WGS318-R001			Type: 3528L			Enclosure: TEFC		
<b>Nameplate Data</b>				<b>110 V, 50 Hz: Low Voltage Connection</b>				
Rated Output (HP)			.75		Full Load Torque	2.68 LB-FT		
Volts			110/220		Start Configuration	direct on line		
Full Load Amps			9.6/4.8		Breakdown Torque	11.2 LB-FT		
R.P.M.			1425		Pull-up Torque	5.85 LB-FT		
Hz	50	Phase	1		Locked-rotor Torque	7.35 LB-FT		
NEMA Design Code	N		KVA Code	J		Starting Current	50.8 A	
Service Factor (S.F.)			1		No-load Current	6 A		
NEMA Nom. Eff.	70	Power Factor	76		Line-line Res. @ 25°C	0.825 Ω A Ph 2.35 Ω B Ph		
Rating - Duty			40C AMB-CONT		Temp. Rise @ Rated Load			
					Locked-rotor Power Factor	92.8		
					Rotor inertia	0.166 LB-FT <sup>2</sup>		

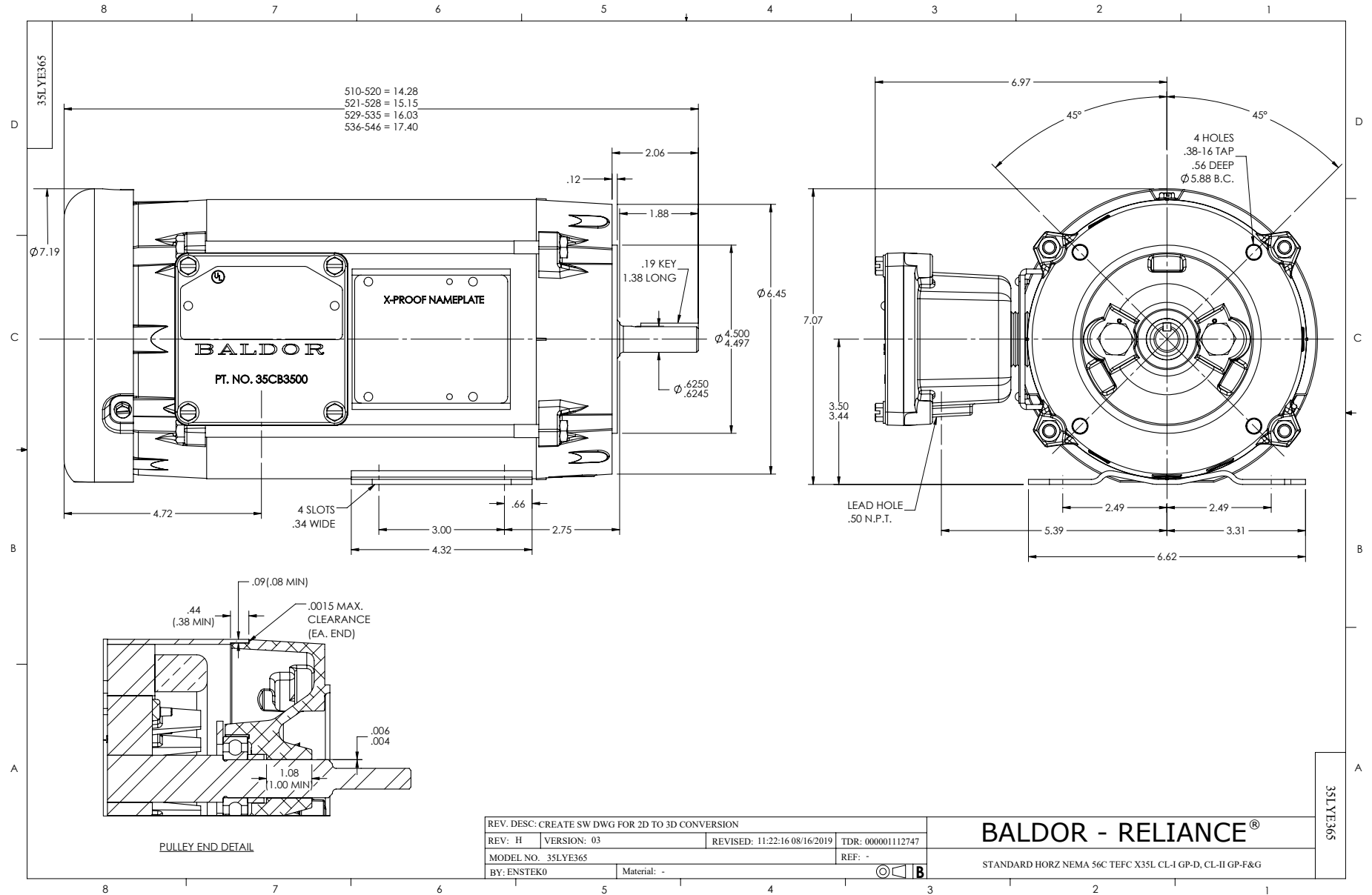
**Load Characteristics 110 V, 50 Hz, 0.75 HP**

% of Rated Load	25	50	75	100	125	150
Power Factor	38	54	66	74	80	83
Efficiency	56.3	67.9	71.4	71.8	69.5	66.1
Speed	1487	1477	1464	1453	1433	1411
Line amperes	6.32	7.01	8.14	9.47	11.4	13.6

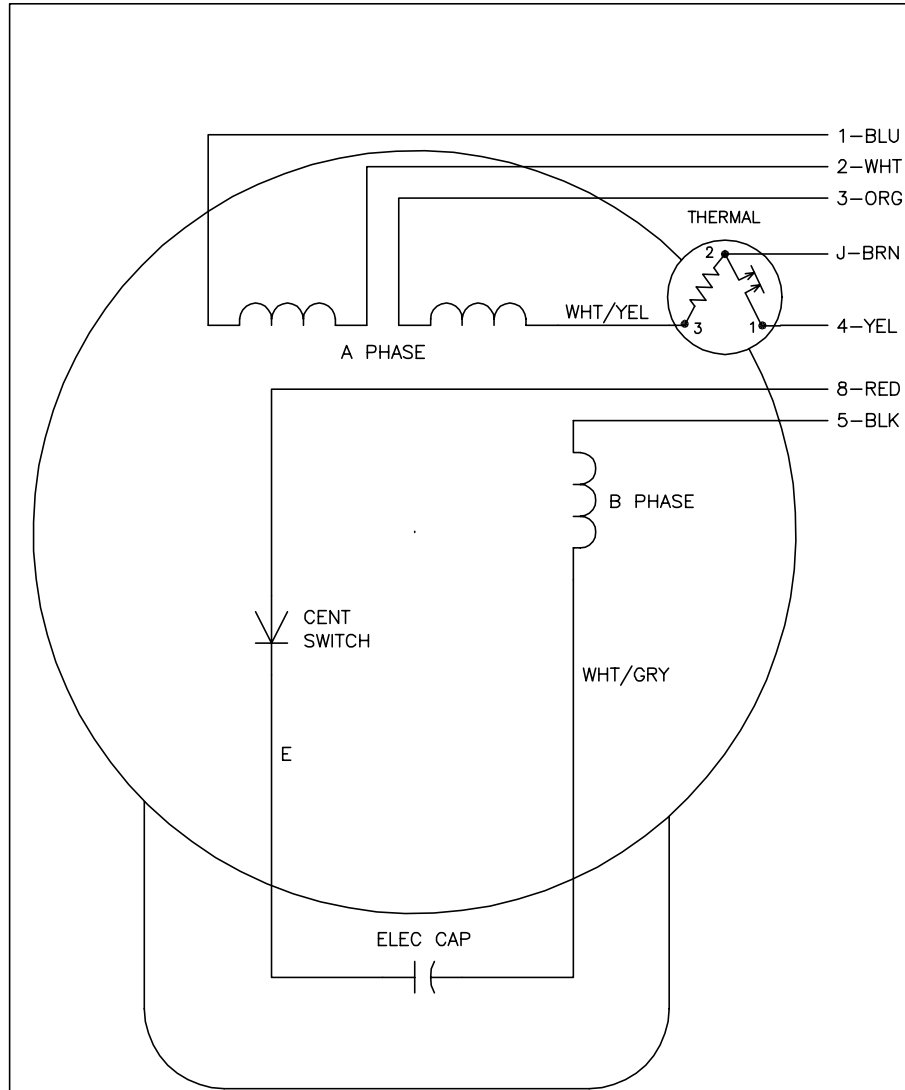
Performance Graph at 110V, 50Hz, 0.75HP Typical performance - Not guaranteed values







CD0008



	LINE A	LINE B	JOIN	JOIN
HIGH STD	1	4	2,3,8	J,5
HIGH OPP	1	4	2,3,5	J,8
LOW STD	1,3,8	4	-	2,J,5
LOW OPP	1,3,5	4	-	2,J,8

NOTES:

1. STANDARD ROTATION IS CCW FACING END OPPOSITE SHAFT EXTENSION.
2. MULTIPLE CAPACITORS ARE CONNECTED IN PARALLEL UNLESS OTHERWISE SPECIFIED.
3. LEAD COLORS ARE OPTIONAL. LEADS MUST ALWAYS BE NUMBERED AS SHOWN.

REV. DESC: REMOVE 2-TERMINAL THERMAL DETAIL, SEE CD0008A02		
REV. LTR: F	VERSION: 01	TDR: 000000360649
80000	FILE: \AAA\00007\408	REVISED: 10:56:54 04/18/2005
	MTL: -	BY: ENJOEPO

**BALDOR ELECTRIC Co.**

TYPE L, DV, REV, THERMAL, 7 LEADS

CD0008

Marketing maintained PDF of MN416:

<http://www.baldor.com/support/Literature/Load.ashx/MN416?ManNumber=MN416>