



---

# Customer information packet

## CXM18542T

5//3HP, 1750//1460RPM, 3PH, 60//50HZ, 184TC

Class - CLI GP D; CLII GP F,G

Division - Division I

## Specifications

Enclosure	XPFC
Frame	184TC
Frame Material	Steel
Frequency	50.00 Hz 60.00 Hz
Motor Letter Type	Three Phase
Output @ Frequency	5.000 HP @ 60 HZ 3.000 HP @ 50 HZ
Phase	3
Synchronous Speed @ Frequency	1800 RPM @ 50 HZ
Voltage @ Frequency	460.0 V @ 60 HZ 190.0 V @ 50 HZ 230.0 V @ 60 HZ 380.0 V @ 50 HZ
XP Class and Group	CLI GP D; CLII GP F,G
XP Division	Division I
Agency Approvals	UL CSA EEV
Ambient Temperature	40 °C
Auxillary Box	No Auxillary Box
Auxillary Box Lead Termination	None
Base Indicator	Rigid
Bearing Grease Type	Polyrex EM (-20F +300F)
Blower	None
Constant Torque Speed Range	30
Current @ Voltage	11.200 A @ 190.0 V 13.600 A @ 230.0 V 5.600 A @ 380.0 V 6.800 A @ 460.0 V
Design Code	A
Drip Cover	No Drip Cover
Duty Rating	CONT

## Part detail

Revision	B
Type	AC
Mech. spec.	
Base	
Status	PRD/A
Elec. spec.	36WGR866
Layout	36LYK919
Eff. date	04-16-2021
CD Diagram	CD0005
Poles	04
Leads	9#16
Proprietary	False
Created date	11-12-2020

Efficiency @ 100% Load	89.5 %
Electrically Isolated Bearing	Not Electrically Isolated
Feedback Device	NO FEEDBACK
Heater Indicator	No Heater
High Voltage Full Load Amps	5.6 a
Insulation Class	F
Inverter Code	Inverter Duty
IP Rating	NONE
KVA Code	L
Lifting Lugs	No Lifting Lugs
Locked Bearing Indicator	No Locked Bearing
Max Speed	2700 rpm
Motor Lead Termination	Flying Leads
Motor Standards	NEMA
Motor Type	3646M
Mounting Arrangement	F1
Number of Poles	4
Overall Length	20.36 IN
Power Factor	74
Product Family	General Purpose
Pulley Face Code	C-Face
Rodent Screen	None
RoHS Status	ROHS NON-COMPLIANT
Service Factor	1.00
Shaft Diameter	1.125 IN
Shaft Ground Indicator	No Shaft Grounding
Shaft Rotation	Reversible
Speed	1750 rpm
Speed Code	Single Speed
Starting Method	Direct on line
Thermal Device - Bearing	None
Thermal Device - Winding	Normally Closed Thermostat
Vibration Sensor Indicator	No Vibration Sensor
Winding Thermal 1	None

Winding Thermal 2

None

XP Temp Code

T3C

**Nameplate**

**NP0887XPSLEV**

<b>NO.</b>		<b>CC</b>	010A		
<b>S/N</b>		<b>TEMP CODE</b>	T3C		
<b>SPEC.</b>	36-0000-0439	<b>INV.TYPE</b>	PWM		
<b>CAT.NO.</b>	CXM18542T	<b>C HP FR</b>	60	<b>C HP TO</b>	90
<b>HP</b>	5//3	<b>CT HZ FROM</b>	30	<b>CT HZ TO</b>	60
<b>VOLTS</b>	230/460//190/380	<b>VT HZ FROM</b>	6	<b>VT HZ TO</b>	60
<b>AMPS</b>	13.6/6.8//11.2/5.6	<b>MAG CUR</b>	7.4/3.7		
<b>RPM</b>	1750//1460	<b>MX RPM</b>	2700		
<b>HZ</b>	60//50	<b>PH</b>	3	<b>CL</b>	F
		<b>NOM.EFF.</b>	89.5		
<b>SER.F.</b>	1.00	<b>DES</b>	A	<b>SL HZ</b>	1.4
		<b>WK2</b>	0.428		
<b>FRAME</b>	184TC	<b>RATING</b>	40C AMB-CONT		
	NEMA MG-1 PART 5, IP54		1.15 SF SINEWAVE		

## Parts list

Part number	Description	Quantity
SA388102	SA 36-0000-0439	1.000 ea
RA378447	RA 36-0000-0439	1.000 ea
LB1119N	WARNING LABEL	1.000 ea
LC0145B01	CONNECTION LABEL	1.000 ea
NP0887XPSLEV	SS XP INV UL CSA-EEV CC CL-I GP-D	1.000 ea
85XU0407S04	4X1/4 U DRIVE PIN STAINLESS	4.000 ea
85XU0407S04	4X1/4 U DRIVE PIN STAINLESS	2.000 ea
MN416A01	TAG-INSTAL-MAINT no wire (2100bx)4/22	1.000 ea
NP0018F	ALUM UL XP CONDUIT BOX NAMEPLATE	1.000 ea
36FH4009A70	IEC FH W/(2)GREASER HOLES, W/ PRIMER	1.000 ea
51XW1032A06	10-32 X .38, TAPTITE II, HEX WSHR SLTD S	3.000 ea
36FN3000C01SP	EXFN, PLASTIC, 5.25 OD, .912 ID	1.000 ea
MJ1000A02	GREASE, POLYREX EM EXXON	0.050 lb
HA3105A09	THRUBOLT 3/8-16 X 12.000	4.000 ea
WD4100A03	DE-750 HEYCO PLUG 62MP0750 MICRO PLASTIC	2.000 ea
36EP3700A01	FR ENDPLATE, MACH	1.000 ea
HW5100A05	WVY WSHR F/205 & 304 BRGS	1.000 ea
HW4500A19	1/4-28X1/4 SLOTTED PLUG F/S	2.000 ea
36EP1703A01	PU ENDPLATE, MACH	1.000 ea
84XN1032J20	SCREW, SOC 10-32 X 1 1/4"BMH4602	2.000 ea
HW4001A01	1/4 HX SOC PIPE PLG (F/S) ALLOY STEEL W/	2.000 ea
60XN1032A07	10-32 X .4375 TRUSS HEAD, TORX SERRATED	2.000 ea
HW3022E05	.125 DIA X .500 ROLLED SPRING PIN	1.000 ea
35CB3001A02SP	EXPL PROOF CONDUIT BOX, 3/4"PIPE TAP LEA	1.000 ea
11XW1032G06	10-32 X .38, TAPTITE II, HEX WSHR SLTD U	1.000 ea
HW3001B01	BRASS CUP WASHER, FOR #10 SCREW	1.000 ea
35CB3500A01SP	CONDUIT BOX LID, MACH	1.000 ea
51XN2520A16	SCREW, HEX WS SLT, ZN, 1/4-20 X 1.00	4.000 ea
MG1500Y02	WILKOPON PRIMER YELLOW	0.022 ga
MG1025G29	WILKOFAS, 789.229, DARK CHARCOAL GRAY	0.022 ga
GOPA1000	PKG GRP, PRINT PK1026A06	1.000 ea

---

HW2501E16	KEY, 1/4 SQ X 1.750	1.000 ea
HA7000A02	KEY RETAINER RING, 1 1/8 DIA, 1 3/8 DIA	1.000 ea

---

**AC Induction Motor Performance Data**

Record # 78059

Typical performance - not guaranteed values

<b>Winding: 36WGR866-R001</b>		<b>Type: 3646M</b>		<b>Enclosure: XPFC</b>		
<b>Nameplate Data</b>			<b>460 V, 60 Hz: High Voltage Connection</b>			
<b>Rated Output (HP)</b>	5//3		<b>Full Load Torque</b>	14.92 LB-FT		
<b>Volts</b>	230/460//190/380		<b>Start Configuration</b>	direct on line		
<b>Full Load Amps</b>	13.6/6.8//11.2/5.6		<b>Breakdown Torque</b>	68.7 LB-FT		
<b>R.P.M.</b>	1750//1460		<b>Pull-up Torque</b>	35.1 LB-FT		
<b>Hz</b>	60//50	<b>Phase</b>	3	<b>Locked-rotor Torque</b>	42.8 LB-FT	
<b>NEMA Design Code</b>	A		<b>KVA Code</b>	L	<b>Starting Current</b>	59.1 A
<b>Service Factor (S.F.)</b>	1			<b>No-load Current</b>	3.71 A	
<b>NEMA Nom. Eff.</b>	89.5	<b>Power Factor</b>	74	<b>Line-line Res. @ 25°C</b>	1.91 Ω	
<b>Rating - Duty</b>	40C AMB-CONT			<b>Temp. Rise @ Rated Load</b>	58°C	
				<b>Locked-rotor Power Factor</b>	39.7	
				<b>Rotor inertia</b>	0.428 LB-FT <sup>2</sup>	

**Load Characteristics 460 V, 60 Hz, 5 HP**

<b>% of Rated Load</b>	<b>25</b>	<b>50</b>	<b>75</b>	<b>100</b>	<b>125</b>	<b>150</b>
<b>Power Factor</b>	36	57	69	76	81	83
<b>Efficiency</b>	80.6	87.7	89.6	89.8	89.5	88.7
<b>Speed</b>	1789	1780	1770	1760	1749	1737
<b>Line amperes</b>	4.01	4.72	5.7	6.83	8.1	9.53



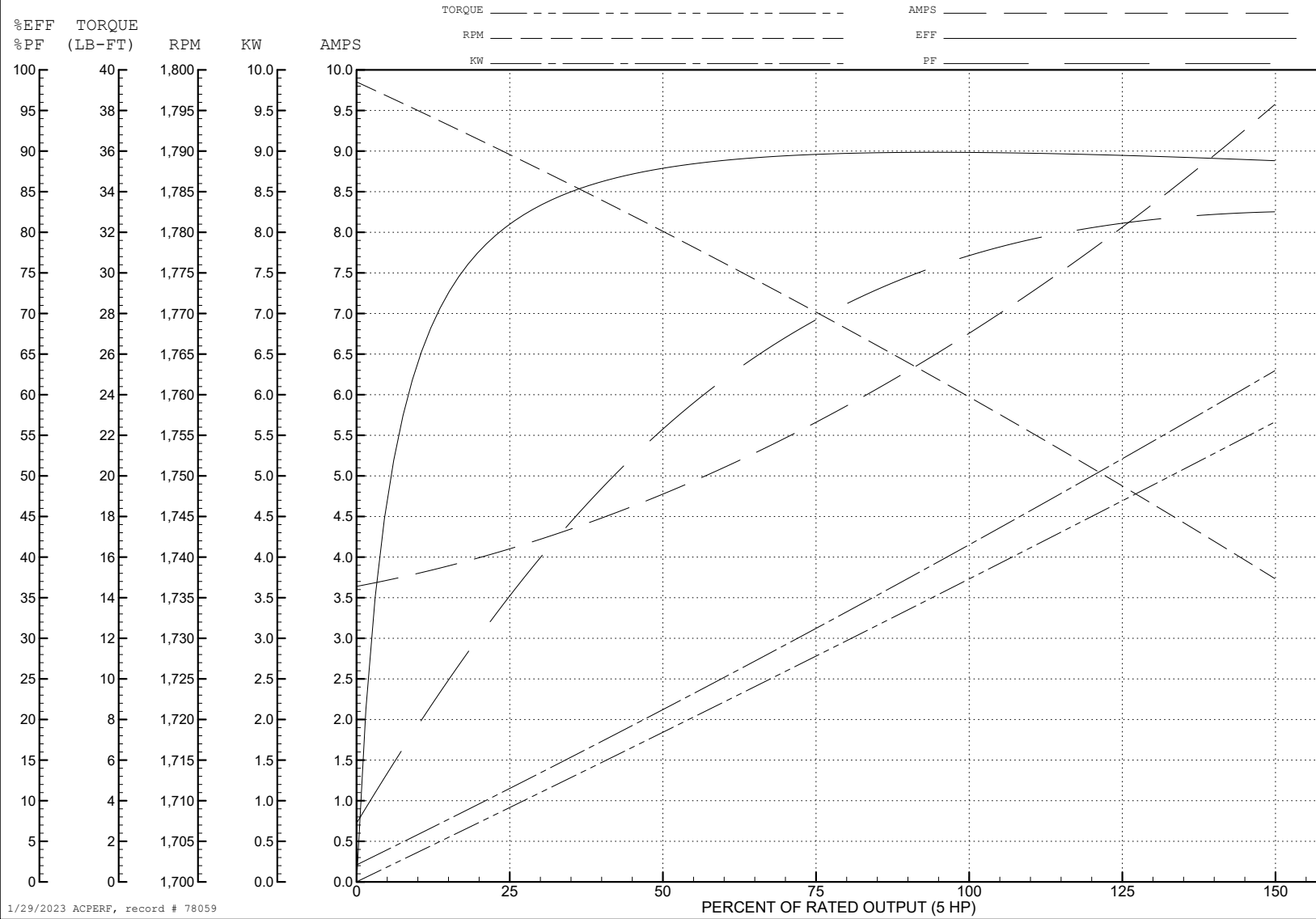
ABB Motors and Mechanical Inc.

WINDING # 36WGR866

5 HP 3 PH 60 HZ 1760 RPM 460 V 3646M

Typical performance - not guaranteed values.

TORQUES (LB-FT): PO=68.7 PU=35.1 LR=42.8 LRA=59.1



1/29/2023 ACPERF, record # 78059

**AC Induction Motor Performance Data**

Record # 78060

Typical performance - not guaranteed values

<b>Winding:</b> 36WGR866-R001		<b>Type:</b> 3646M		<b>Enclosure:</b> XPFC		
<b>Nameplate Data</b>			<b>380 V, 50 Hz: High Voltage Connection</b>			
<b>Rated Output (HP)</b>	5//3		<b>Full Load Torque</b>	10.7 LB-FT		
<b>Volts</b>	230/460//190/380		<b>Start Configuration</b>	direct on line		
<b>Full Load Amps</b>	13.6/6.8//11.2/5.6		<b>Breakdown Torque</b>	65.1 LB-FT		
<b>R.P.M.</b>	1750//1460		<b>Pull-up Torque</b>	35.75 LB-FT		
<b>Hz</b>	60//50	<b>Phase</b>	3	<b>Locked-rotor Torque</b>	43.59 LB-FT	
<b>NEMA Design Code</b>	A		<b>KVA Code</b>	L	<b>Starting Current</b>	57.03 A
<b>Service Factor (S.F.)</b>	1			<b>No-load Current</b>	3.63 A	
<b>NEMA Nom. Eff.</b>	89.5	<b>Power Factor</b>	74	<b>Line-line Res. @ 25°C</b>	1.91 Ω	
<b>Rating - Duty</b>	40C AMB-CONT			<b>Temp. Rise @ Rated Load</b>	42°C	
				<b>Locked-rotor Power Factor</b>	44	
				<b>Rotor inertia</b>	0.428 LB-FT <sup>2</sup>	

**Load Characteristics 380 V, 50 Hz, 3 HP**

<b>% of Rated Load</b>	<b>25</b>	<b>50</b>	<b>75</b>	<b>100</b>	<b>125</b>	<b>150</b>
<b>Power Factor</b>	29	47	60	68	75	78
<b>Efficiency</b>	75.9	84.9	87.8	88.7	88.8	88.4
<b>Speed</b>	1492	1485	1477	1470	1461	1453
<b>Line amperes</b>	3.82	4.27	4.89	5.6	6.42	7.34

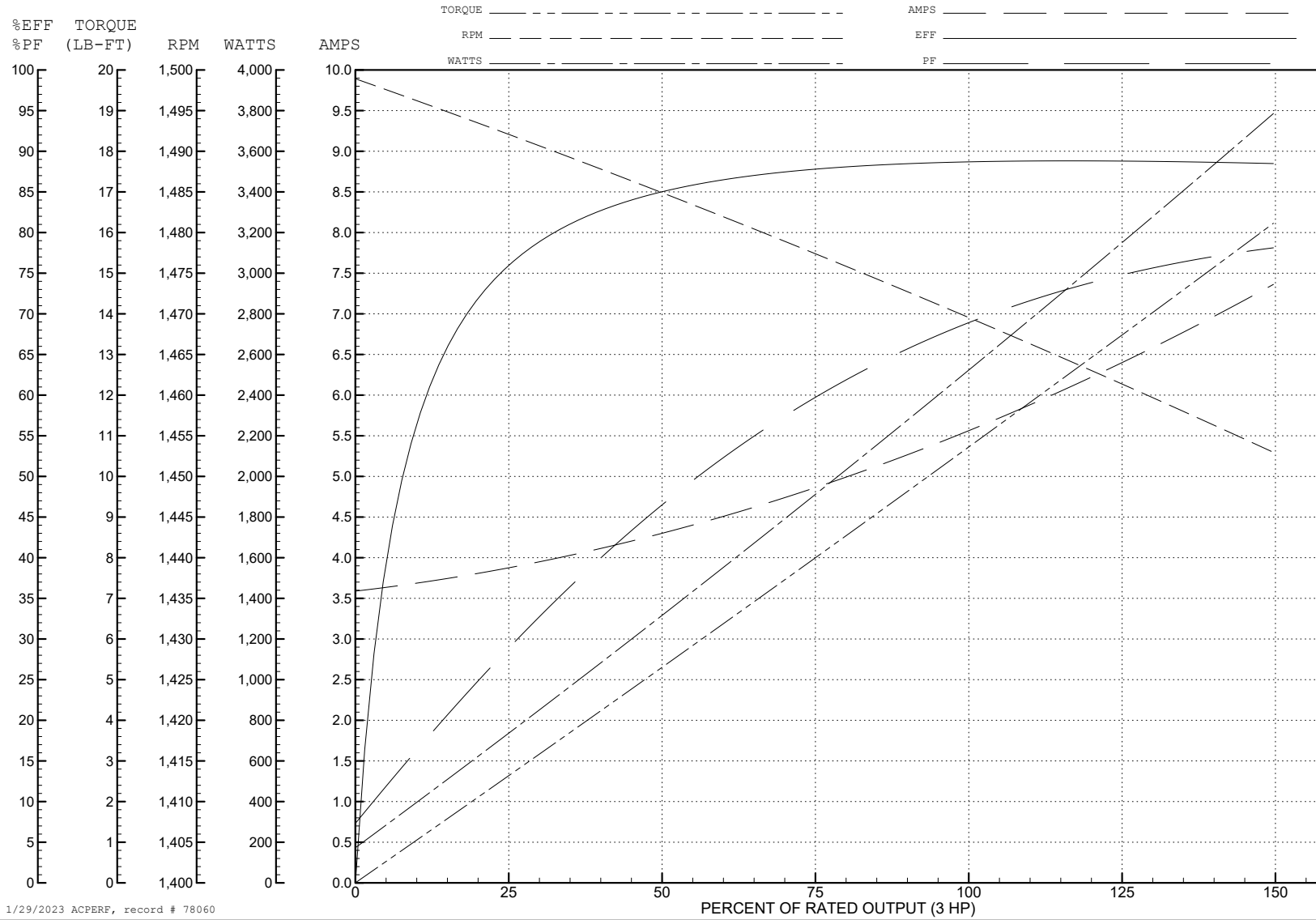
ABB Motors and Mechanical Inc.

WINDING # 36WGR866

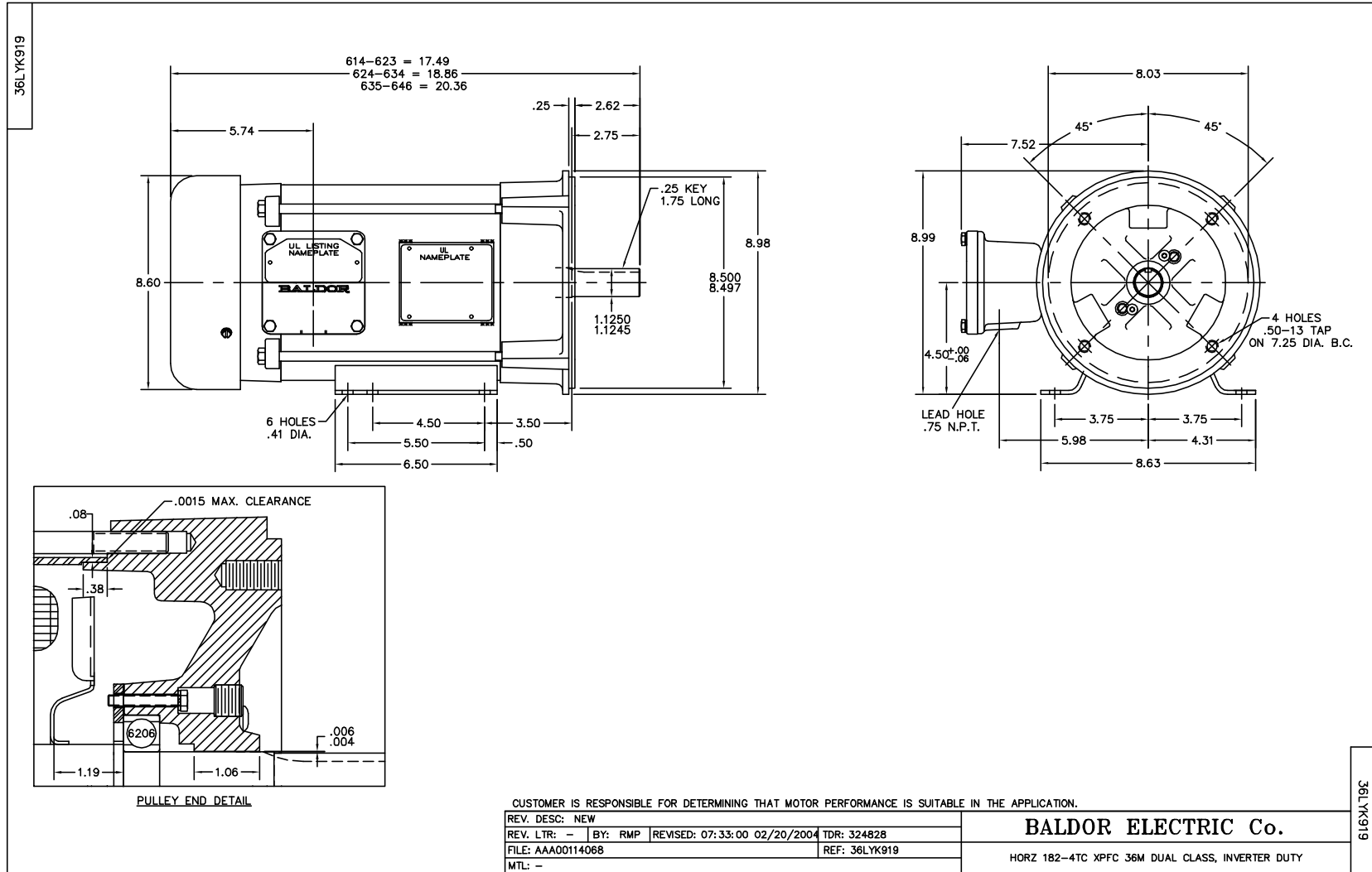
3 HP 3 PH 50 HZ 1470 RPM 380 V 3646M

Typical performance - not guaranteed values.

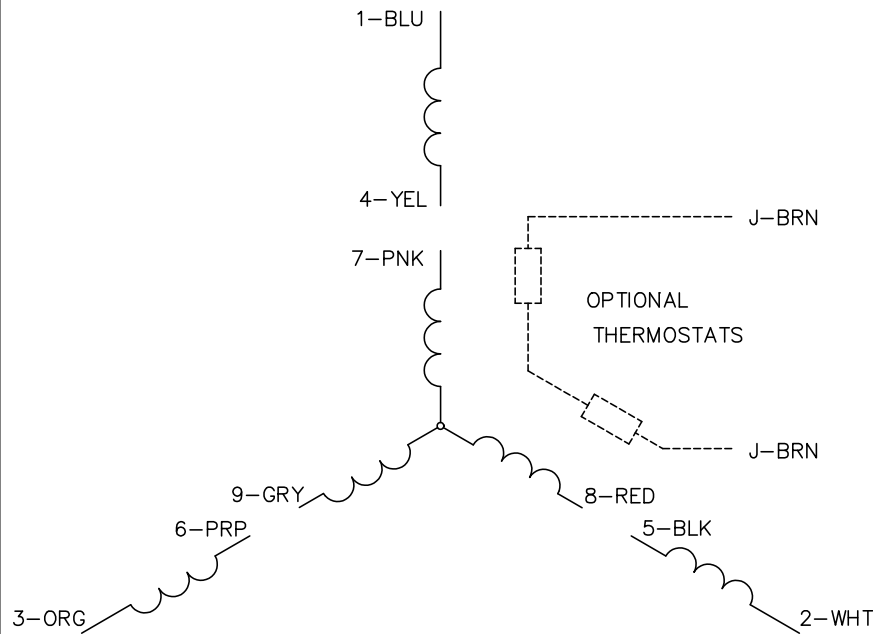
TORQUES (LB-FT): PO=65.1 PU=35.75 LR=43.59 LRA=57.03



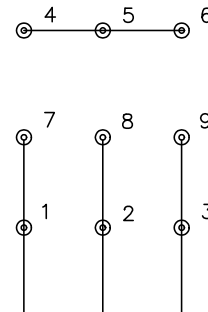
1/29/2023 ACPERF, record # 78060



CD0005

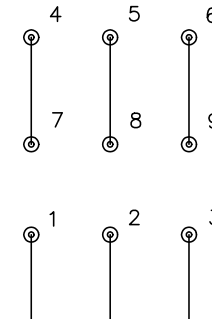


LOW VOLTAGE  
(2Y)



LINE

HIGH VOLTAGE  
(1Y)



LINE

**NOTES:**

1. INTERCHANGE ANY TWO LINE LEADS TO REVERSE ROTATION.
2. OPTIONAL THERMOSTATS ARE PROVIDED WHEN SPECIFIED.
3. ACTUAL NUMBER OF INTERNAL PARALLEL CIRCUITS MAY BE A MULTIPLE OF THOSE SHOWN ABOVE.
4. LEAD COLORS ARE OPTIONAL. LEADS MUST ALWAYS BE NUMBERED AS SHOWN.

REV. DESC: REVISE TO SHOW OPTIONAL COLORS			
REV. LTR: E	BY: JLP	REVISED: 01/19/99 10:15	TDR: 0171435
S00000		FILE: AAA00005140	MDL: -
		MTL: -	

**BALDOR ELECTRIC Co.**

3PH, DV, 9 LEADS

CD0005