



Customer information packet

CXT3504T

50HP, 1770RPM, 3PH, 60HZ, 326TC, 1272M, TEFC, F

Class - CLI GP A,B,C,D

Division - Division II

Specifications

Enclosure	TEFC
Frame	326TC
Frame Material	Iron
Frequency	60.00 Hz
Motor Letter Type	Three Phase
Output @ Frequency	50.000 HP @ 60 HZ
Phase	3
Synchronous Speed @ Frequency	1800 RPM @ 60 HZ
Voltage @ Frequency	230.0 V @ 60 HZ 460.0 V @ 60 HZ
XP Class and Group	CLIP A,B,C,D
XP Division	Division II
Agency Approvals	CCSA US UR NEMA PREMIUM CSA EEV
Ambient Temperature	40 °C
Auxillary Box	No Auxillary Box
Auxillary Box Lead Termination	None
Base Indicator	Rigid
Bearing Grease Type	Polyrex EM (-20F +300F)
Blower	None
Constant Torque Speed Range	3
Current @ Voltage	114.000 A @ 230.0 V 125.000 A @ 208.0 V 57.000 A @ 460.0 V
Design Code	B
Drip Cover	No Drip Cover
Duty Rating	CONT
Efficiency @ 100% Load	94.5 %
Electrically Isolated Bearing	Not Electrically Isolated
Feedback Device	NO FEEDBACK

Part detail

Revision	B
Type	AC
Mech. spec.	
Base	
Status	PRD/A
Elec. spec.	12WGY627
Layout	12LYC052
Eff. date	08-08-2022
CD Diagram	CD0005
Poles	04
Leads	9#8
Proprietary	False
Created date	11-16-2020

Heater Indicator	No Heater
High Voltage Full Load Amps	57.0 a
Insulation Class	F
Inverter Code	Inverter Duty
IP Rating	NONE
KVA Code	G
Lifting Lugs	Standard Lifting Lugs
Locked Bearing Indicator	Locked Bearing
Motor Lead Termination	Flying Leads
Motor Standards	NEMA
Motor Type	1272M
Mounting Arrangement	F1
Number of Poles	4
Overall Length	30.28 IN
Power Factor	87
Product Family	General Purpose
Pulley Face Code	C-Face
Rodent Screen	None
Service Factor	1.15
Shaft Diameter	2.125 IN
Shaft Ground Indicator	No Shaft Grounding
Shaft Rotation	Reversible
Speed	1770 rpm
Speed Code	Single Speed
Starting Method	Direct on line
Thermal Device - Bearing	None
Thermal Device - Winding	None
Vibration Sensor Indicator	No Vibration Sensor
Winding Thermal 1	None
Winding Thermal 2	None
XP Temp Code	T3

Nameplate

NP4163L										
CAT.NO.	CXT3504T					I.P.	54			
SPEC.	12-0000-1914					ENCL	TEFC			
FRAME	326TC		H.P.	50						
VOLTS	230/460		P.F.	87						
F.L. AMPS	114/57		RATING	40C AMB-CONT						
R.P.M.	1770		USABLE AT 208V			125				
HZ.	60		PH.	3		CLASS	F			
SER.F.	1.15		DES.	B		SL HZ	1			
NEMA NOM. EFF.	94.5		WK2	9.59						
DE	6312		ODE	6311						
MAG. CUR.	36/18									
INV TYPE	PWM	CHP	60		TO	90		T. CODE	T3	
CT	3	TO	60		VT	3		TO	60	
CC	010A		SN							
USABLE AT 50 HZ 40HP 190/380V										
112/56A										

Parts list

Part number	Description	Quantity
SA388660	SA 12-0000-1914	1.000 ea
RA379025	RA 12-0000-1914	1.000 ea
LB1115N	LABEL,LIFTING DEVICE (ON ROLLS)	1.000 ea
LC0005E01	SPL CONN.DIA./WARN.LABEL(LC0005/LB1119)	1.000 ea
LB1449	DIV-2/NEC WARNING LABEL	1.000 ea
NP4163L	SS CP INV DIV-2 UL CSA-C US EEV PREM, DI	1.000 ea
85XU0407S04	4X1/4 U DRIVE PIN STAINLESS	2.000 ea
MN416A01	TAG-INSTAL-MAINT no wire (2100bx)4/22	1.000 ea
12FH1002SP	FAN COVER, CAST	1.000 ea
HW1001A50	LOCKWASHER 1/2, ZINC PLT,.879 OD, .509 I	4.000 ea
XY5013A12	NUT,1/2-13,HEX,STEEL,ZINCPLATED	4.000 ea
09FN3001B03SP	EXTERNAL FAN, PLASTIC (COMES W/SCREW FRO	1.000 ea
HW2500A25	WOODRUFF KEY USA #1008 #BLOW CARBON STEE	1.000 ea
MJ1000A02	GREASE, POLYREX EM EXXON	0.200 lb
12EP1107A196	FREP W/SLINGER & "O" DRAIN,W/O RET HLS	1.000 ea
HA3400A13	STUD, 1/2-13 X 7" WELKER	4.000 ea
HW1001A50	LOCKWASHER 1/2, ZINC PLT,.879 OD, .509 I	4.000 ea
HW4600B41	V-RING SLINGER 2.125 X 2.880 X 0.280	1.000 ea
HW5100A13	W4627-047 WVY WSHER	1.000 ea
HA4017A01	1/8 X 4 GREASE EXT (F/S)	1.000 ea
HA4051A00	PLASTIC CAP FOR GREASE FITTING	1.000 ea
HW4500A21	1618BALEMITE FITTING 825 UNIVERSAL	1.000 ea
HW4500A17	317400 ALEMITE GREASE RELIEF	1.000 ea
HA4066A01	PUSH IN T-DRAIN FITTING (BLACK)	1.000 ea
12EP1105A121	PU ENDPLATE, MACH W/"O" DRAIN	1.000 ea
HW1001A50	LOCKWASHER 1/2, ZINC PLT,.879 OD, .509 I	4.000 ea
10XN5013K28	1/2-13 X 1.75 HEX HEAD MACH SCREW,GRAD	4.000 ea
HW4600B41	V-RING SLINGER 2.125 X 2.880 X 0.280	1.000 ea
10XN3118K40	5/16-18 X 2.75" HEX HD, GRADE 5	4.000 ea
HW1001A31	LOCKWASHER 5/16, ZINC PLT.591 OD, .319 I	4.000 ea
HA4051A00	PLASTIC CAP FOR GREASE FITTING	1.000 ea

HW4500A03	GREASE FITTING, .125 NPT 1610(ALEMITE) 8	1.000 ea
HW4500A17	317400 ALEMITE GREASE RELIEF	1.000 ea
HA4066A01	PUSH IN T-DRAIN FITTING (BLACK)	1.000 ea
10CB3001A31	KOBX, MACH W/2.50 LD HL,.38-16 GND	1.000 ea
09GS1000	GASKET-CONDUIT BOX, 1/16 THICK LEXIDE	1.000 ea
10XN3118K16	5/16-18 X 1' GRADE #5, STL, ZINC PLATE	4.000 ea
HW1001A31	LOCKWASHER 5/16, ZINC PLT.591 OD, .319 I	4.000 ea
WD1000B19	TERMINAL BURNDY L250HP	1.000 ea
10XN3816K08	3/8-16 X .50 HEX HD CAP SCREW GRADE 5	1.000 ea
HW1001A38	LOCKWASHER 3/8, ZINC PLT .688 OD, .382 I	1.000 ea
10CB3500SP	CONDUIT BOX LID, CAST	1.000 ea
10GS1000	GASKET, CONDUIT BOX LID	1.000 ea
51XW2520A12	.25-20 X .75, TAPTITE II, HEX WSHR SLTD	4.000 ea
MG1025L14	WILKOFAS, 776.14, GRUNDFOS BLACK	0.125 ga
12PA1000	PACKAGING GROUP PRINT PK1024A07	1.000 ea
HW2501H33	KEY, 1/2 SQ X 3.875	1.000 ea

AC Induction Motor Performance Data

Record # 40068

Typical performance - not guaranteed values

Winding: 12WGY627-R001		Type: 1272M		Enclosure: TEFC	
Nameplate Data			460 V, 60 Hz: Single Voltage Motor		
Rated Output (HP)	50		Full Load Torque	148 LB-FT	
Volts	230/460		Start Configuration	direct on line	
Full Load Amps	114/57		Breakdown Torque	446 LB-FT	
R.P.M.	1770		Pull-up Torque	182.7 LB-FT	
Hz	60 Phase	3	Locked-rotor Torque	253.9 LB-FT	
NEMA Design Code	B KVA Code	G	Starting Current	344 A	
Service Factor (S.F.)	1.15		No-load Current	18.3 A	
NEMA Nom. Eff.	94.5 Power Factor	87	Line-line Res. @ 25°C	0.11 Ω	
Rating - Duty	40C AMB-CONT		Temp. Rise @ Rated Load	61°C	
S.F. Amps			Temp. Rise @ S.F. Load	76°C	
			Locked-rotor Power Factor	24.4	
			Rotor inertia	9.59 LB-FT ²	

Load Characteristics 460 V, 60 Hz, 50 HP

% of Rated Load	25	50	75	100	125	150	S.F.
Power Factor	57	78	85	87	88	87	88
Efficiency	92.5	94.7	94.9	94.5	93.8	92.9	94.1
Speed	1791	1785	1779	1772	1765	1756	1768
Line amperes	22.3	31.9	43.5	56.9	71.3	87.1	65.5

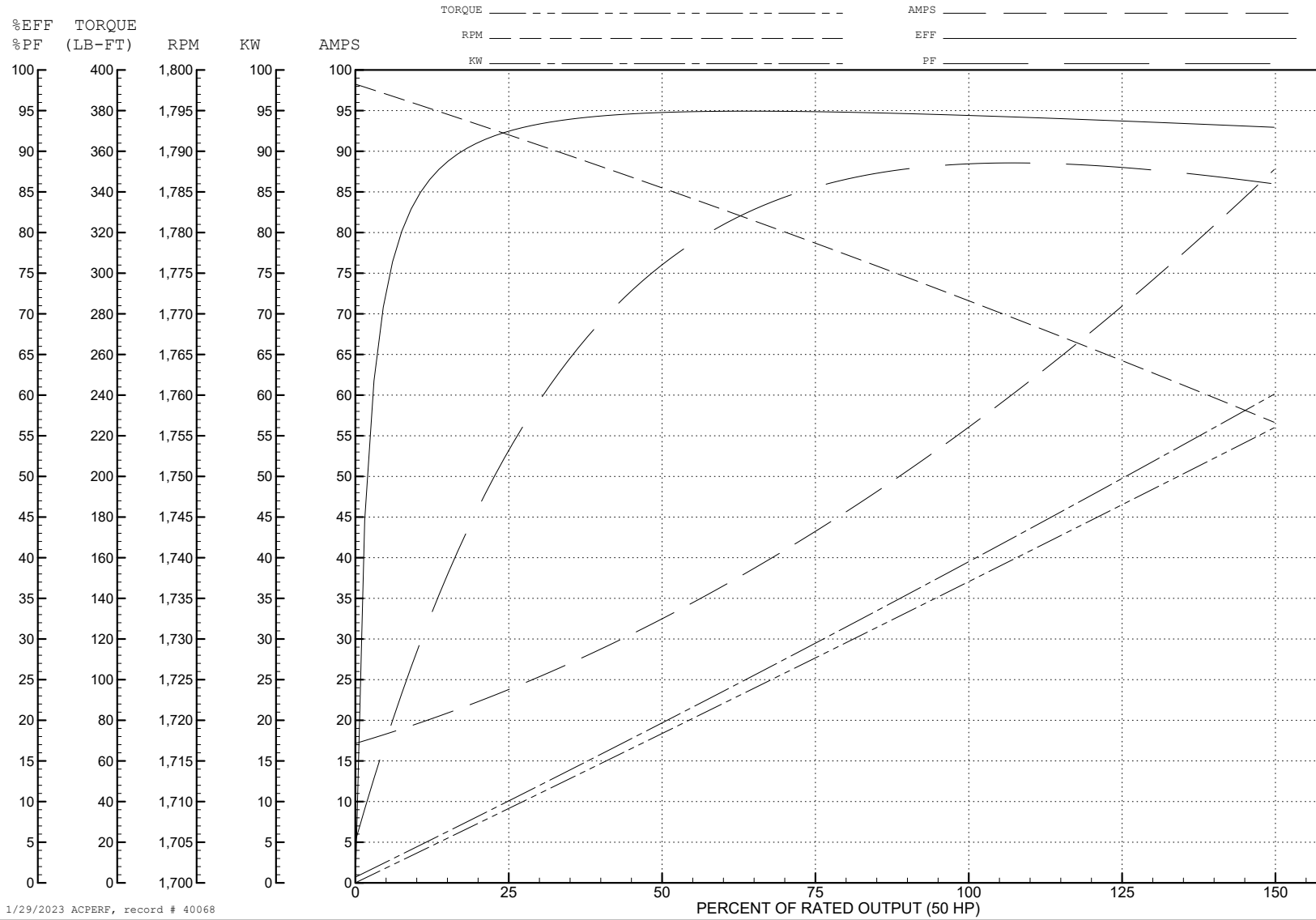
ABB Motors and Mechanical Inc.

WINDING # 12WGY627

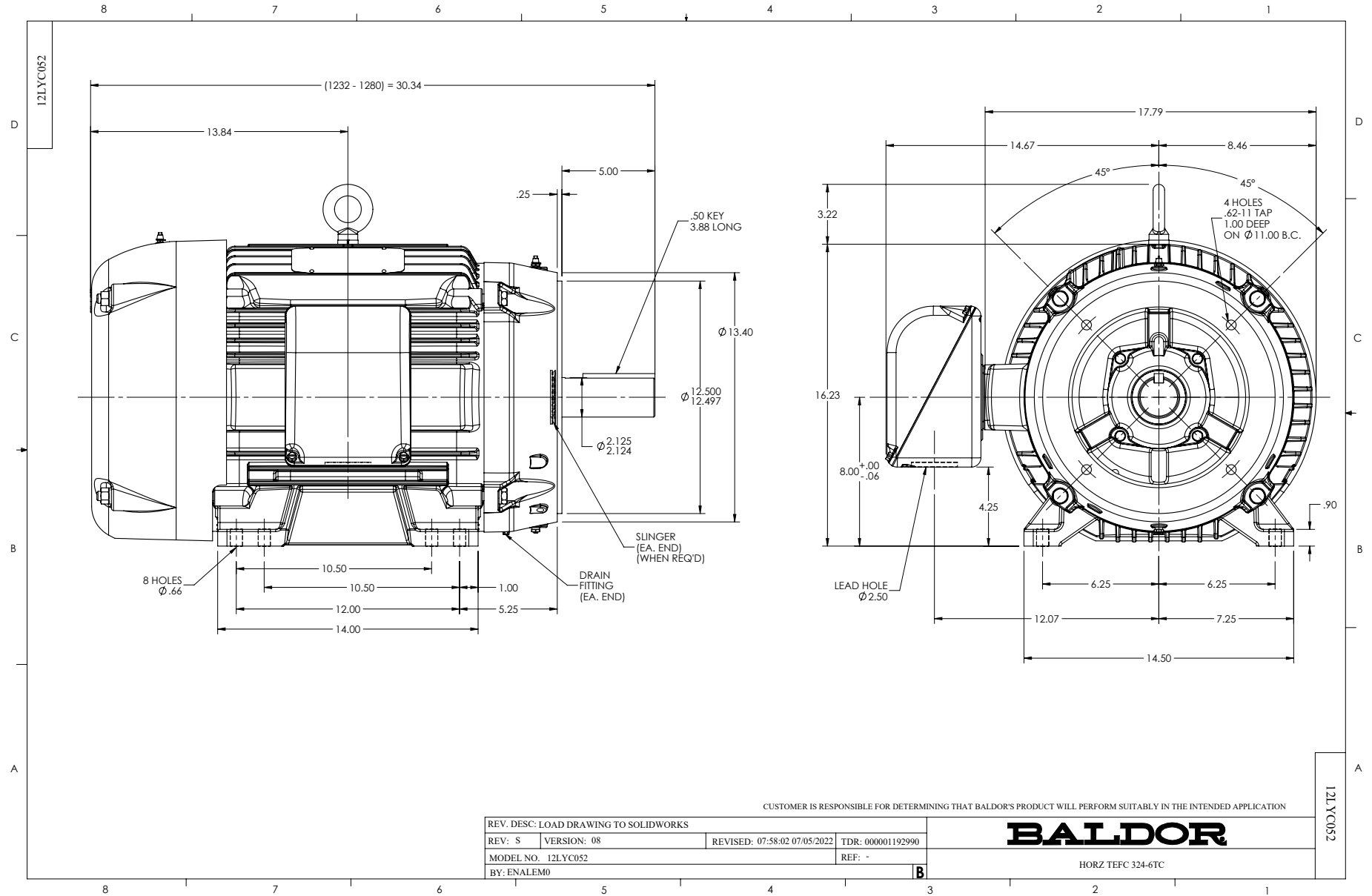
Typical performance - not guaranteed values.

50 HP 3 PH 60 HZ 1770 RPM 460 V 1272M

TORQUES (LB-FT): PO=446 PU=182.7 LR=253.9 LRA=344



1/29/2023 ACPERF, record # 40068



CD0005



LOW VOLTAGE
(2Y)



LINE

HIGH VOLTAGE
(1Y)



LINE

NOTES:

1. INTERCHANGE ANY TWO LINE LEADS TO REVERSE ROTATION.
2. OPTIONAL THERMOSTATS ARE PROVIDED WHEN SPECIFIED.
3. ACTUAL NUMBER OF INTERNAL PARALLEL CIRCUITS MAY BE A MULTIPLE OF THOSE SHOWN ABOVE.
4. LEAD COLORS ARE OPTIONAL. LEADS MUST ALWAYS BE NUMBERED AS SHOWN.

CD0005

REV. DESC: REVISE TO SHOW OPTIONAL COLORS			
REV. LTR: E	BY: JLP	REVISED: 01/19/99 10:15	TDR: 0171435
S00000		FILE: AAA00005140	MDL: -
		MTL: -	

BALDOR ELECTRIC Co.

3PH, DV, 9 LEADS