



---

# Customer information packet

## EBM3609Y

2HP, 1760RPM, 3PH, 60HZ, 184, 3528M, TEFC, F1, B

Class - None

Division - Not Applicable

## Specifications

Enclosure	TEFC
Frame	184
Frame Material	Steel
Frequency	60.00 Hz
Motor Letter Type	Three Phase
Output @ Frequency	2.000 HP @ 60 HZ
Phase	3
Synchronous Speed @ Frequency	1800 RPM @ 60 HZ
Voltage @ Frequency	230.0 V @ 60 HZ 460.0 V @ 60 HZ
XP Class and Group	None
XP Division	Not Applicable
Agency Approvals	CSA EEV NEMA PREMIUM NEMA_PREMIUM UR
Ambient Temperature	40 °C
Auxillary Box	No Auxillary Box
Auxillary Box Lead Termination	None
Base Indicator	Rigid
Bearing Grease Type	Polyrex EM (-20F +300F)
Blower	None
Current @ Voltage	6.000 A @ 208.0 V 5.600 A @ 230.0 V 2.800 A @ 460.0 V
Design Code	B
Drip Cover	No Drip Cover
Duty Rating	CONT
Efficiency @ 100% Load	86.5 %
Electrically Isolated Bearing	Not Electrically Isolated
Feedback Device	NO FEEDBACK
Front Shaft Indicator	None

## Part detail

Revision	A
Type	AC
Mech. spec.	35M527
Base	
Status	PRD/A
Elec. spec.	35WGG073
Layout	35LYM527
Eff. date	10-27-2022
CD Diagram	CD0005
Poles	04
Leads	9#18
Proprietary	False
Created date	01-10-2022

Heater Indicator	No Heater
High Voltage Full Load Amps	2.8 a
Insulation Class	F
Inverter Code	Inverter Ready
KVA Code	K
Lifting Lugs	No Lifting Lugs
Locked Bearing Indicator	No Locked Bearing
Motor Lead Quantity/Wire Size	9 @ 18 AWG
Motor Lead Termination	Flying Leads
Motor Standards	NEMA
Motor Type	3528M
Mounting Arrangement	F1
Number of Poles	4
Overall Length	17.49 IN
Power Factor	74
Product Family	General Purpose
Pulley End Bearing Type	Ball
Pulley Face Code	Standard
Pulley Shaft Indicator	Standard
Rodent Screen	None
Service Factor	1.15
Shaft Diameter	0.875 IN
Shaft Ground Indicator	No Shaft Grounding
Shaft Rotation	Reversible
Shaft Slinger Indicator	No Slinger
Speed	1760 rpm
Speed Code	Single Speed
Starting Method	Direct on line
Thermal Device - Bearing	None
Thermal Device - Winding	None
Vibration Sensor Indicator	No Vibration Sensor
Winding Thermal 1	None
Winding Thermal 2	None

**Nameplate**

<b>NP1259L</b>									
<b>CAT.NO.</b>	EBM3609Y								
<b>SPEC.</b>	35M527G073G1								
<b>HP</b>	2								
<b>VOLTS</b>	230/460								
<b>AMP</b>	5.6/2.8								
<b>RPM</b>	1760								
<b>FRAME</b>	184		<b>HZ</b>	60		<b>PH</b>	3		
<b>SER.F.</b>	1.15	<b>CODE</b>	K	<b>DES</b>	B	<b>CL</b>	F		
<b>NEMA-NOM-EFF</b>	86.5	<b>PF</b>	77						
<b>RATING</b>	40C AMB-CONT								
<b>CC</b>	010A		<b>USABLE AT 208V</b>				5.8		
<b>DE</b>	6205		<b>ODE</b>	6203					
<b>ENCL</b>	TEFC	<b>SN</b>							
	SFA 6.26/3.13								

## Parts list

Part number	Description	Quantity
SA402662	SA 35M527G073G1	1.000 ea
RA393939	RA 35M527G073G1	1.000 ea
34FN3002B01	EXTERNAL FAN, PLASTIC, .637/.639 HUB W/	1.000 ea
NS2512A01	INSULATOR, CONDUIT BOX X	1.000 ea
35CB3007	35 CB CASTING W/.88 DIA. LEAD HOLE	1.000 ea
36GS1000SP	GASKET-CONDUIT BOX, .06 THICK #SV-330 LE	1.000 ea
51XB1016A07	10-16 X 7/16 HXWSSLD SERTYB	2.000 ea
11XW1032G06	10-32 X .38, TAPTITE II, HEX WSHR SLTD U	1.000 ea
35EP3900T02	SPL FACE MTD FR EP-ENCL-W/STEARNS BRAKE	1.000 ea
HW4500A01	1641B(ALEMITE)400 UNIV, GREASE FITT	1.000 ea
HW5100A03	WAVY WASHER (W1543-017)	1.000 ea
35EP3123F01	F00 W/FH MTG	1.000 ea
HW4500A01	1641B(ALEMITE)400 UNIV, GREASE FITT	1.000 ea
XY1032A02	10-32 HEX NUT DIRECTIONAL SERRATION	4.000 ea
HW2501D10	KEY, 3/16 SQ X 1.000	1.000 ea
HW2500A16	EY, USA #606, WOODRUFF	1.000 ea
35FH4005A13	IEC FH W/GRSR & 1.09 SHAFT HOLE, W/	1.000 ea
51XW1032A06	10-32 X .38, TAPTITE II, HEX WSHR SLTD S	3.000 ea
35CB4521GX	CONDUIT BOX LID KIT **ORDER INDIV PARTS	1.000 ea
51XW0832A07	8-32 X .44, TAPTITE II, HEX WSHR SLTD SE	4.000 ea
HW2501D13	KEY, 3/16 SQ X 1.375	1.000 ea
HA7000A01	KEY RETAINER 7/8" DIA SHAFT	1.000 ea
85XU0407S04	4X1/4 U DRIVE PIN STAINLESS	2.000 ea
MJ1000A02	GREASE, POLYREX EM EXXON	0.050 lb
84XN3816J28	HEX SOC HD, 3/8-16 X 1.75 LONG	2.000 ea
35FN3002A02SP	EXFN, PLASTIC, 6.376 OD, .987 ID W/KEY	1.000 ea
HW2500A16	EY, USA #606, WOODRUFF	1.000 ea
MG1000Y03	MUNSELL 2.53Y 6.70/ 4.60, GLOSS 20,	0.017 ga
HA3100A18	THRUBOLT 10-32 X 9.250	4.000 ea
76BK3100BQF	1-056-031-00-BQF BRAKE TDR# 79345	1.000 ea
LB1404	BRAKE CONNECTION LABEL	1.000 ea

LC0005E01	CONN.DIA./WARNING LABEL (LC0005/LB1119N)	1.000 ea
NP1259L	ALUM SUPER-E UL CSA-EEV CC NEMA PREMIUM	1.000 ea
G7PA1000	PKG GRP, PRINT PK1034A06	1.000 ea
MN416A01	TAG-INSTAL-MAINT no wire (2100bx)4/22	1.000 ea

**AC Induction Motor Performance Data**

Record # 87157

Typical performance - not guaranteed values

Winding: 35WGG073-R001		Type: 3528M	Enclosure: TEFC	
<b>Nameplate Data</b>			<b>460 V, 60 Hz: High Voltage Connection</b>	
Rated Output (HP)		2	Full Load Torque	5.99 LB-FT
Volts		230/460	Start Configuration	direct on line
Full Load Amps		5.6/2.8	Breakdown Torque	20.5 LB-FT
R.P.M.		1760	Pull-up Torque	13.8 LB-FT
Hz	60 Phase	3	Locked-rotor Torque	15 LB-FT
NEMA Design Code	B KVA Code	K	Starting Current	22.5 A
Service Factor (S.F.)		1.15	No-load Current	1.62 A
NEMA Nom. Eff.	86.5 Power Factor	77	Line-line Res. @ 25°C	9.54 Ω
Rating - Duty		40C AMB-CONT	Temp. Rise @ Rated Load	64°C
S.F. Amps		6.3/3.15	Temp. Rise @ S.F. Load	77°C
			Locked-rotor Power Factor	57.9
			Rotor inertia	0.202 lb-ft <sup>2</sup>

**Load Characteristics 460 V, 60 Hz, 2 HP**

% of Rated Load	25	50	75	100	125	150	S.F.
Power Factor	35	55	68	76	81	84	80
Efficiency	78.3	85.3	86.9	86.5	85.3	83.6	86.1
Speed	1791	1782	1771	1760	1748	1734	1754
Line amperes	1.71	1.97	2.34	2.82	3.36	3.97	3.13

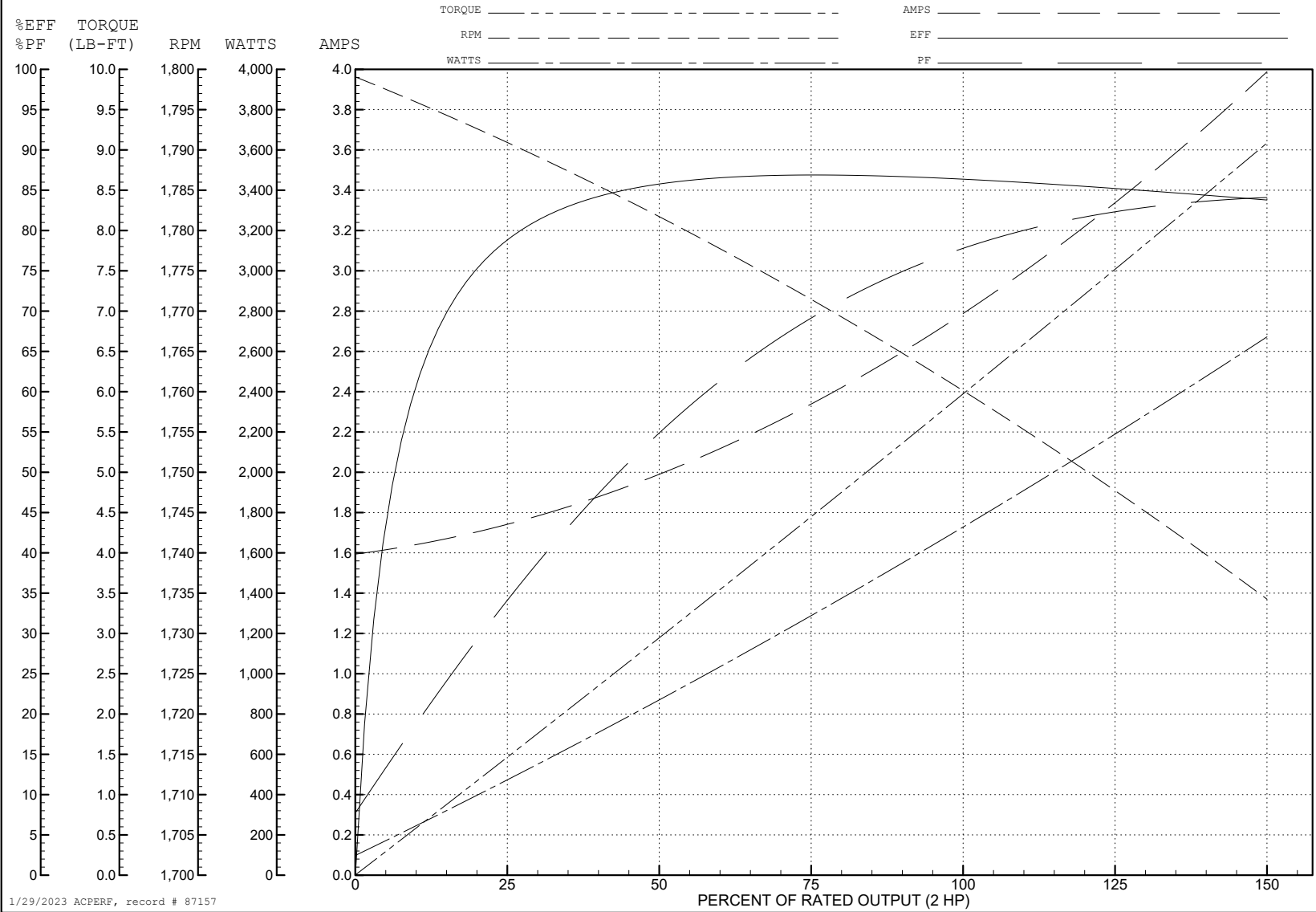
ABB Motors and Mechanical Inc.

WINDING # 35WGG073

2 HP 3 PH 60 HZ 1760 RPM 460 V 3528M

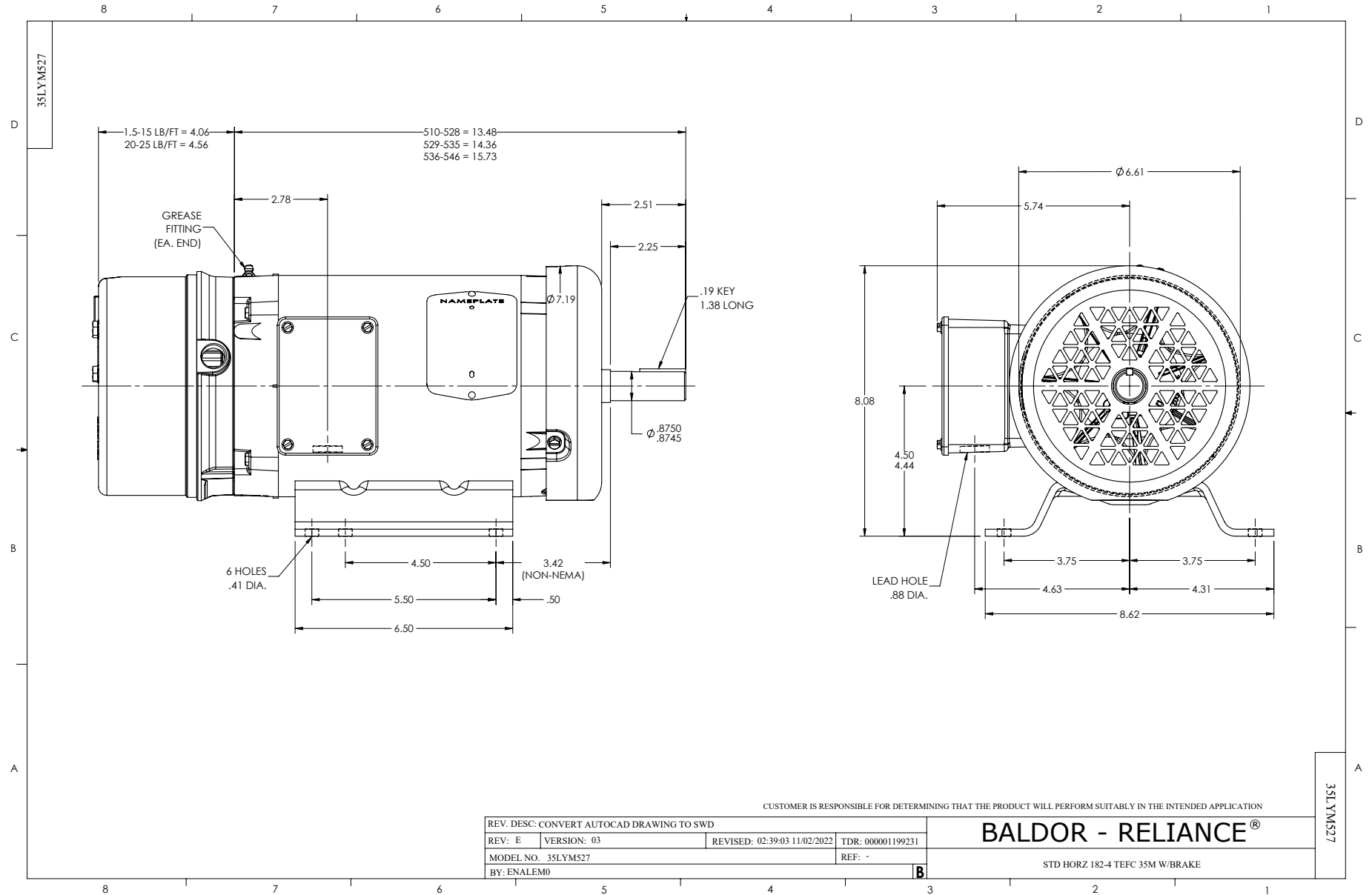
Typical performance - not guaranteed values.

TORQUES (LB-FT): PO=20.5 PU=13.8 LR=15 LRA=22.5

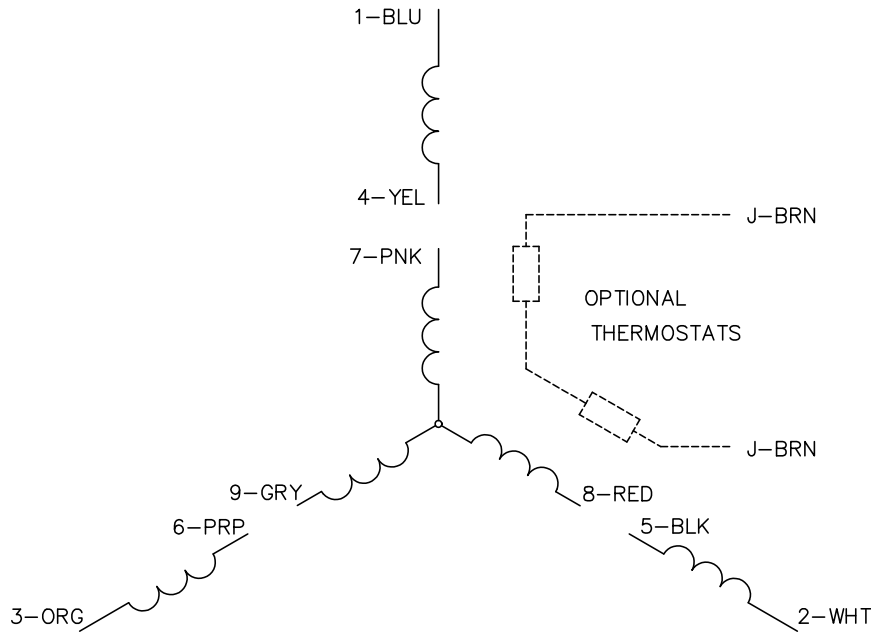


1/29/2023 ACPERF, record # 87157

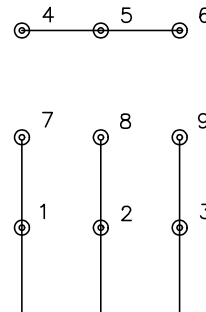




CD0005



LOW VOLTAGE (2Y)



LINE

HIGH VOLTAGE (1Y)



LINE

NOTES:

1. INTERCHANGE ANY TWO LINE LEADS TO REVERSE ROTATION.
2. OPTIONAL THERMOSTATS ARE PROVIDED WHEN SPECIFIED.
3. ACTUAL NUMBER OF INTERNAL PARALLEL CIRCUITS MAY BE A MULTIPLE OF THOSE SHOWN ABOVE.
4. LEAD COLORS ARE OPTIONAL. LEADS MUST ALWAYS BE NUMBERED AS SHOWN.

CD0005

REV. DESC: REVISE TO SHOW OPTIONAL COLORS			
REV. LTR: E	BY: JLP	REVISED: 01/19/99 10:15	TDR: 0171435
S00000		FILE: AAA00005140	MDL: -
		MTL: -	

BALDOR ELECTRIC Co.

3PH, DV, 9 LEADS