

BALDOR® • RELIANCE 

Product Information Packet

EBNM3546-D

1/.75KWHP,1770 1/MINRPM,3PH,60HZ,56,3522

Part Detail							
Revision:	B	Status:	PRD/A	Change #:		Proprietary:	No
Type:	AC	Elec. Spec:	35WGZ818	CD Diagram:	CD0005	Mfg Plant:	
Mech. Spec:	35X056	Layout:	35LYX056	Poles:	04	Created Date:	01-10-2022
Base:	RG	Eff. Date:	07-14-2022	Leads:	9#18		

Specs			
Catalog Number:	EBNM3546-D	Front Shaft Indicator:	None
Enclosure:	TENV	Heater Indicator:	No Heater
Frame:	56	Insulation Class:	F
Frame Material:	Steel	Inverter Code:	Inverter Ready
Motor Letter Type:	Three Phase	KVA Code:	M
Output @ Frequency:	1.000 HP @ 60 HZ	Lifting Lugs:	No Lifting Lugs
Synchronous Speed @ Frequency:	1800 RPM @ 60 HZ	Locked Bearing Indicator:	No Locked Bearing
Voltage @ Frequency:	460.0 V @ 60 HZ	Motor Lead Quantity/Wire Size:	9 @ 18 AWG
	230.0 V @ 60 HZ	Motor Lead Exit:	Ko Box
XP Class and Group:	None	Motor Lead Termination:	Flying Leads
XP Division:	Not Applicable	Motor Type:	3524M
Agency Approvals:	CE	Mounting Arrangement:	F3
	CSA	Power Factor:	76
	CSA EEV	Product Family:	General Purpose
	UR	Pulley End Bearing Type:	Ball
	WEEE	Pulley Face Code:	Standard
Auxillary Box:	No Auxillary Box	Pulley Shaft Indicator:	Standard
Auxillary Box Lead Termination:	None	Rodent Screen:	None

Base Indicator:	Rigid	Shaft Extension Location:	Pulley End
Bearing Grease Type:	Polyrex EM (-20F +300F)	Shaft Ground Indicator:	No Shaft Grounding
Blower:	None	Shaft Rotation:	Reversible
Current @ Voltage:	3.000 A @ 208.0 V	Shaft Slinger Indicator:	No Slinger
	2.900 A @ 230.0 V	Speed Code:	Single Speed
	1.450 A @ 460.0 V	Motor Standards:	NEMA
Design Code:	B	Starting Method:	Direct on line
Drip Cover:	No Drip Cover	Thermal Device - Bearing:	None
Duty Rating:	CONT	Thermal Device - Winding:	None
Electrically Isolated Bearing:	Not Electrically Isolated	Vibration Sensor Indicator:	No Vibration Sensor
Feedback Device:	NO FEEDBACK	Winding Thermal 1:	None
Front Face Code:	Brake Mounting	Winding Thermal 2:	None

Nameplate NP2934L										
CAT.NO.	EBNM3546-D									
SPEC.	35X056Z818G1									
HP	1/.75KW									
VOLTS	230/460									
AMP	3.34/1.67 IP44 IC410 22KG									
RPM	1770 1/MIN									
FRAME	56			HZ	60			PH	3	
SER.F.	1.15			CODE	M		DES	B	CL	F
NEMA-NOM-EFF	85.5			PF	66					
RATING	40C AMB-S1 CONT									
CC	010A						USABLE AT 208V	3.3		
DE	6205			ODE	6203					
ENCL	TENV			SN						
	IE3-60HZ-84.6(75%)82.1(50%)									

Parts List		
Part Number	Description	Quantity
SA401942	SA 35X056Z818G1	1.000 EA
RA393205	RA 35X056Z818G1	1.000 EA
NS2512A01	INSULATOR, CONDUIT BOX X	1.000 EA
35CB4007	KOBX,W/PRIMER (WAS REL# 79097-49-C)	1.000 EA
35GS3009	GASKET, KOBX 35CB4006 (411881-15A)	1.000 EA
WD4101A13	STEEL CAPLUG,BP-1 1/8, PLUG D3561S	2.000 EA
51XB1016A05	10-16X5/16HX WA SL SR TYB (F/S)	2.000 EA
11XW1032G06	10-32 X .38, TAPTITE II, HEX WSHR SLTD U	1.000 EA
HW3001B02	BRASS CUP WASHER W/GROUND SYMBOL TAB,	1.000 EA
35EP3900T25	FR EP FACE MNT ENCL FOR BRAKE	1.000 EA
HW5100A03	WAVY WASHER (W1543-017)	1.000 EA
35EP3123A00	MASTER DE,205 BRG,.998SH,#26 DRN	1.000 EA
XY1032A02	10-32 HEX NUT DIRECTIONAL SERRATION	4.000 EA
10XN3816K64	3/8-16X4 HX HD CAP SCREW, GRADE 5	4.000 EA
HW1001A38	LOCKWASHER 3/8, ZINC PLT .688 OD, .382 I	4.000 EA
BR2006B01	DBSC SPLINED HUB 5/8 BOR	1.000 EA
35CB4519	CB LID W/BLACK PRIMER	1.000 EA
35GS3020	NEOPRENE GASKET, KOBX LID (602018-31)	1.000 EA
51XW0832A07	8-32 X .44, TAPTITE II, HEX WSHR SLTD SE	4.000 EA
WD4006A01	WIRE JOINT,T&B RB-4 OR RB-44	1.000 EA
HW2501D13	KEY, 3/16 SQ X 1.375	1.000 EA
HA7000A04	KEY RETAINER 0.625 DIA SHAFTS	1.000 EA
85XU0407S04	4X1/4 U DRIVE PIN STAINLESS	2.000 EA
LB1419	CONNECTION LABEL	1.000 EA

Parts List (continued)		
Part Number	Description	Quantity
MJ1000A02	GREASE, POLYREX EM EXXON	0.050 LB
MG1025N19	MUNSELL 8.5BG 3.57/2.0, GLOSS 30, B/G,	0.017 GA
HA3100A18	THRUBOLT 10-32 X 9.250	4.000 EA
152326	DBSC-VP-6-MA-230/460 VAC	1.000 EA
MN416A01	TAG-INSTAL-MAINT no wire (2200bx) 4/22	1.000 EA
LC0005E01	CONN.DIA./WARNING LABEL (LC0005/LB1119N)	1.000 EA
NP2934L	ALUM SUPER-E UL CSA-EEV CE CC PREM	1.000 EA
36PA1001	PKG GRP, PRINT PK1017A06	1.000 EA
PK3082	STYROFOAM CRADLE	1.000 EA
PE-0000001	ZRTG PE ASSEMBLY	1.000 EA

AC Induction Motor Performance Data

Record # 89784

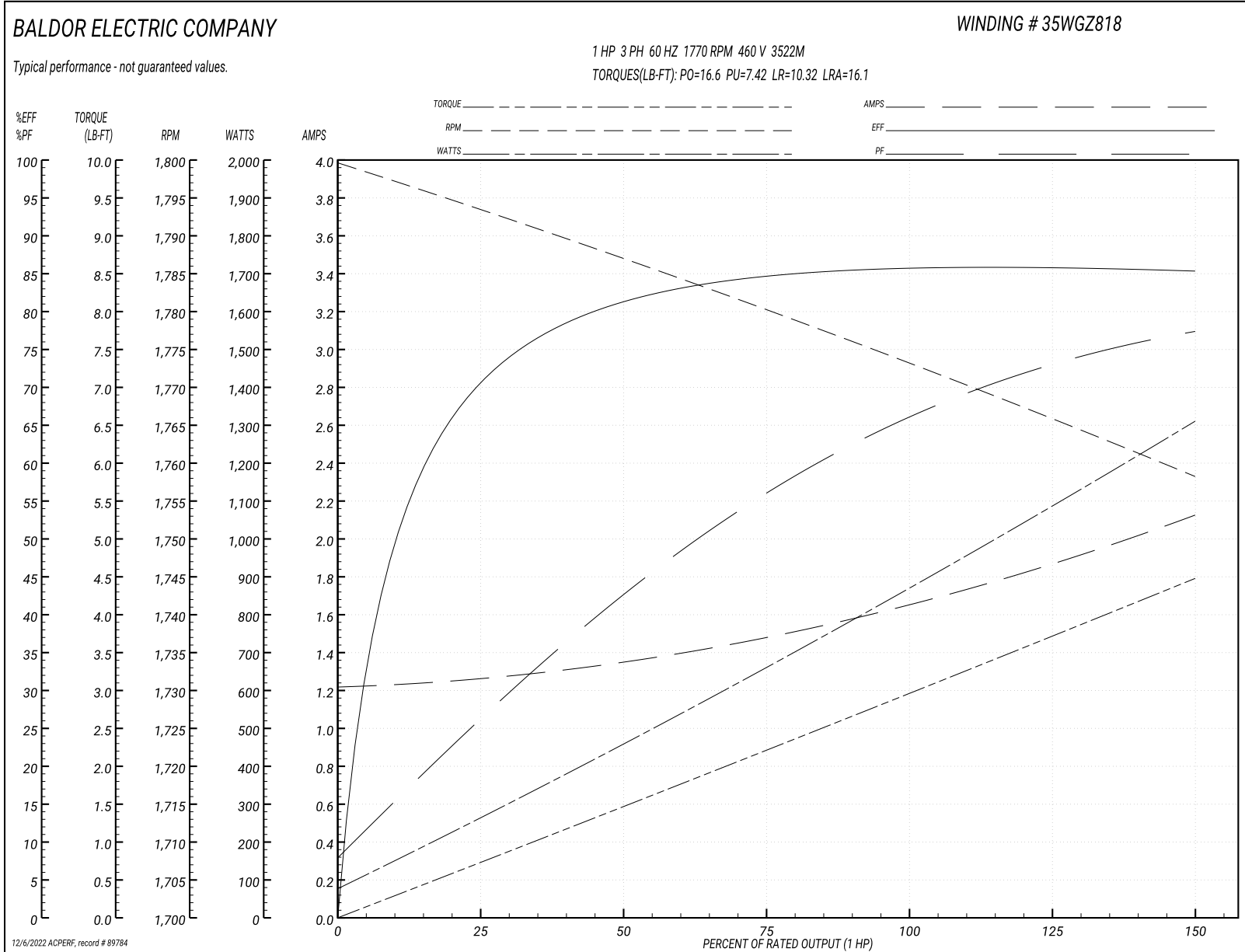
Typical performance - not guaranteed values

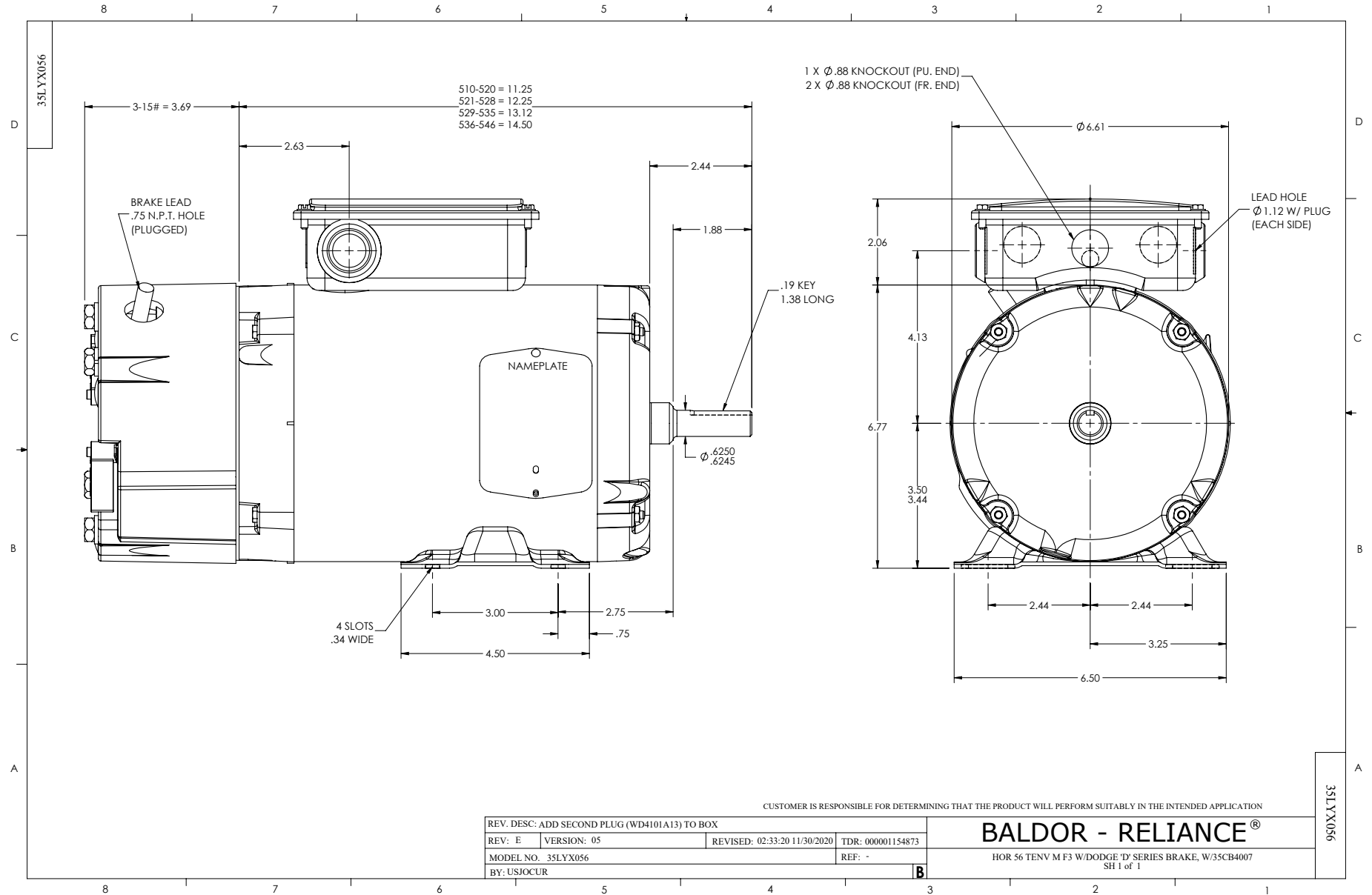
Winding: 35WGZ818-R002		Type: 3522M	Enclosure: TENV	
Nameplate Data			460 V, 60 Hz: High Voltage Connection	
Rated Output (HP)	1	Full Load Torque	2.99 LB-FT	
Volts	230/460	Start Configuration	direct on line	
Full Load Amps	3.34/1.67	Breakdown Torque	16.6 LB-FT	
R.P.M.	1770	Pull-up Torque	7.42 LB-FT	
Hz	60 Phase	Locked-rotor Torque	10.32 LB-FT	
NEMA Design Code	B KVA Code	Starting Current	16.1 A	
Service Factor (S.F.)	1.15	No-load Current	1.23 A	
NEMA Nom. Eff.	85.5 Power Factor	Line-line Res. @ 25°C	14.4 Ω	
Rating - Duty	40C AMB-CONT	Temp. Rise @ Rated Load	63°C	
S.F. Amps	3.5/1.75	Temp. Rise @ S.F. Load	71°C	
		Locked-rotor Power Factor	60.4724	
		Rotor inertia	0.159 lb-ft ²	

Load Characteristics 460 V, 60 Hz, 1 HP

% of Rated Load	25	50	75	100	125	150	S.F.
Power Factor	27	43	56	66	73	78	72
Efficiency	70.8	81.2	84.5	85.9	85.8	85.2	85.5
Speed	1793	1786	1781	1773	1766	1758	1768
Line amperes	1.25	1.34	1.49	1.67	1.87	2.12	1.75

Performance Graph at 460V, 60Hz, 1.0HP Typical performance - Not guaranteed values





CD0005

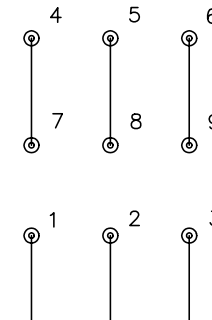


LOW VOLTAGE
(2Y)



LINE

HIGH VOLTAGE
(1Y)



LINE

NOTES:

1. INTERCHANGE ANY TWO LINE LEADS TO REVERSE ROTATION.
2. OPTIONAL THERMOSTATS ARE PROVIDED WHEN SPECIFIED.
3. ACTUAL NUMBER OF INTERNAL PARALLEL CIRCUITS MAY BE A MULTIPLE OF THOSE SHOWN ABOVE.
4. LEAD COLORS ARE OPTIONAL. LEADS MUST ALWAYS BE NUMBERED AS SHOWN.

REV. DESC: REVISE TO SHOW OPTIONAL COLORS			
REV. LTR: E	BY: JLP	REVISED: 01/19/99 10:15	TDR: 0171435
900000		FILE: AAA00005140	MDL: -
		MTL: -	

BALDOR ELECTRIC Co.

3PH, DV, 9 LEADS

CD0005

CD2120

WIRING CONNECTIONS (1 PHASE VAC)

	POWER LINE A	POWER LINE B	CAP TOGETHER	CAP ALONE
AC LOW VOLT.	B1	B2	B3 & B5	B4
AC HIGH VOLT.	B1 & B5	B2	---	B3 CAP ALONE B4 CAP ALONE
DC VOLT.	B1	B2	B3 & B5	B4

B1 WHITE
B2 BLACK
B3 GRAY
B4 BLUE
B5 RED

CD2120

REV. DESC: NEW		
REV. LTR: -	VERSION: 00	TDR: 000000741785
FILE: \CKA\00037\282	REVISED: 12:28:11 04/12/2012	
MTL: -	BY: CKRONSO	

BALDOR • DODGE • RELIANCE

D-SERIES MOTOR BRAKE 5LD AC\DC

SH 1 of 1