

BALDOR • RELIANCE

Customer information packet

ECS100A4H5EF4

5HP, 1800RPM, 3PH, 60HZ, 184T, TEFC, AXIAL

Class - None

Division - Not Applicable

Specifications

Enclosure	TEFC
Frame	184T
Frame Material	Steel
Frequency	60.00 Hz
Haz Area Class and Group	None
Haz Area Division	Not Applicable
Motor Letter Type	Three Phase
Phase	3
Agency Approvals	UL WEEE
Auxiliary Box	NO AUXILLARY BOX
Auxiliary Box Lead Termination	None
Base Indicator	Rigid
Bearing Grease Type	Polyrex EM (-20F +300F)
Blower	None
Constant Torque Speed Range	6
Design Code	B
Drip Cover	No Drip Cover
Electrically Isolated Bearing	Not Electrically Isolated
Feedback Device	NO FEEDBACK
Heater Indicator	No Heater
Inverter Code	Inverter Duty
IP Rating	NONE
Lifting Lugs	Standard Lifting Lugs
Locked Bearing Indicator	Locked Bearing
Motor Lead Quantity/Wire Size	3 @ 14 AWG
Motor Lead Termination	Flying Leads
Motor Standards	NEMA
Motor Type	3632B
Mounting Arrangement	F1
Number of Poles	4
Overall Length	22.25 IN

Part detail

Revision	K
Type	AC
Mech. spec.	36T259
Base	
Status	PRD/A
Elec. spec.	36WGL097
Layout	36LYT259
Eff. date	01-06-2026
CD Diagram	CD0006
Poles	04
Leads	3#14 Y
Proprietary	False
Created date	02-06-2020

Product Family	General Purpose
Pulley Face Code	Standard
Rodent Screen	None
RoHS Status	ROHS COMPLIANT
Shaft Diameter	1.125 IN
Shaft Ground Indicator	Shaft Grounding
Shaft Rotation	Reversible
Speed Code	Single Speed
Starting Method	INVERTER SPECIAL
Thermal Device - Bearing	None
Thermal Device - Winding	None
Vibration Sensor Indicator	No Vibration Sensor
Winding Thermal 1	None
Winding Thermal 2	None

Nameplate

NP3968A01A01									
CAT.NO.	ECS100A4H5EF4								
SPEC.	36T259L097G1								
FRAME	184T		ENCL.	TEFC	IP	54			
HP	5	40	C AMB		CONT				
NOM. EFF.	93.7%	PF	97.3%	SF	1.00				
VOLTS	460		FLA	5.3					
RPM	1800		RPM-MAX	4000					
HZ	60	PH.	3	CLASS	F				
BEMF (V)	252		RS (OHMS)	3.30					
LD (MH)	54.0		LQ (MH)	191.0					
VPWM	CHP	60	TO	133					
CT	6	TO	60	VT	1	TO	60		
MATCHED INV	ECI4A5P8								
DE	6206		ODE	6205					
SERIAL #									

NP3978A01

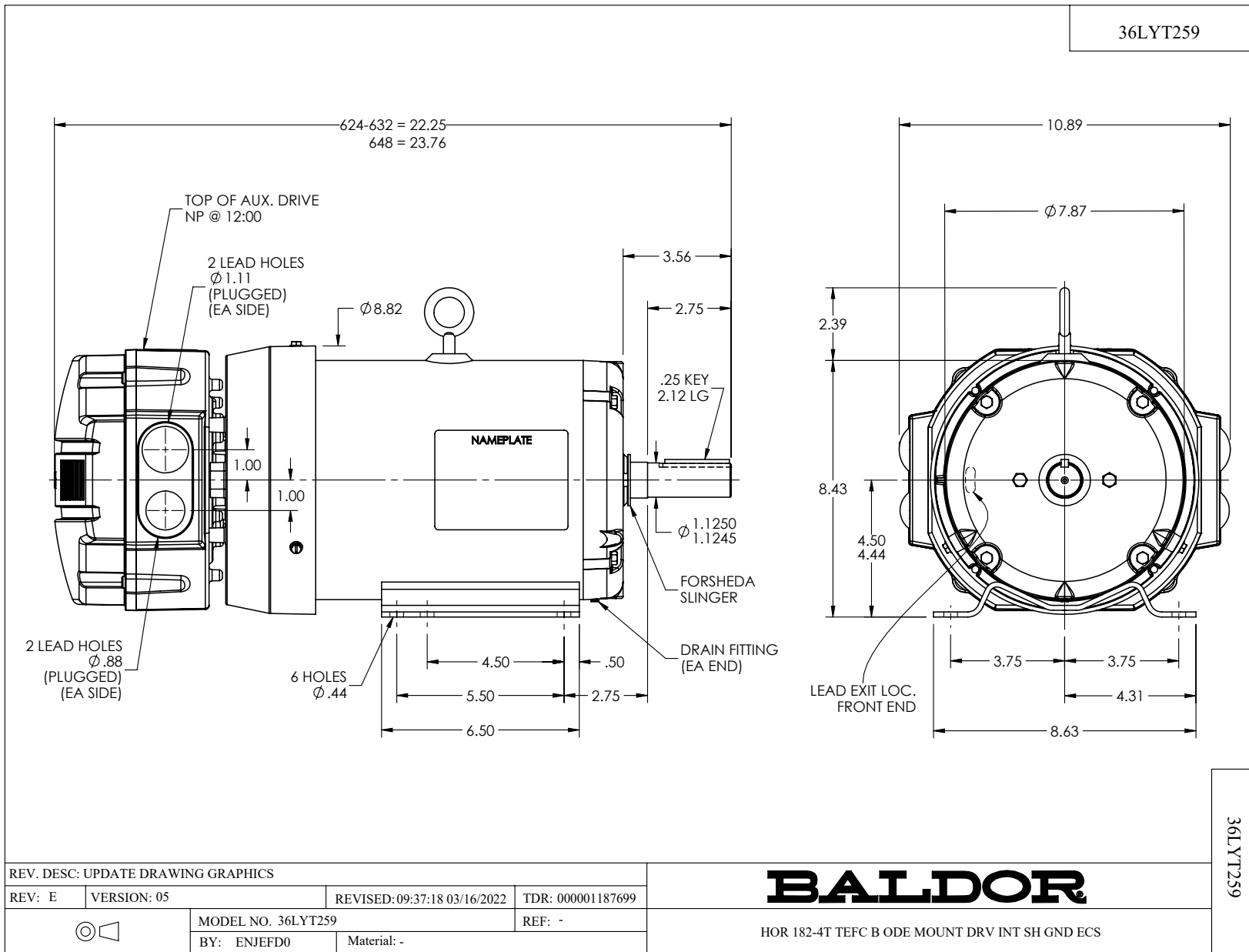
PART NO.	ECI4A5P8				
U1	480	PH	3	HZ	60
I1	7.1	W/EXT. CHOKE			6.0
SERIAL #					

Parts list

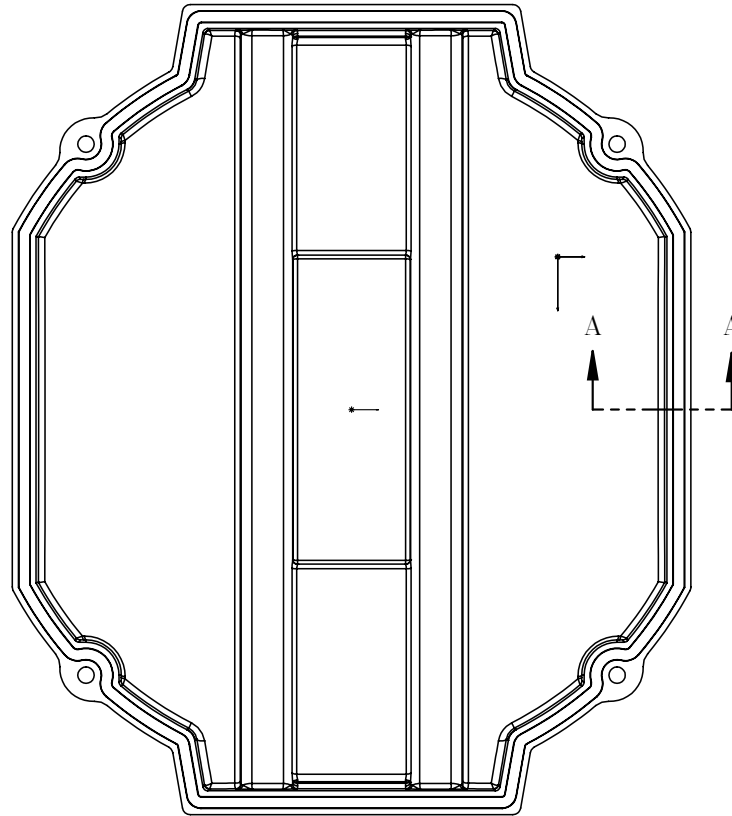
Part number	Description	Quantity
SA379259	SA 36T259L097G1	1.000 ea
RA369245	RA 36T259L097G1	1.000 ea
ECI4A5P8SP	380-480V, 3.0HP, 5.8A, W/BK CHOP, RTC, B	1.000 ea
HW3200A01	3/8-16X3/4 EYEBOLT WELDED F/S	1.000 ea
36EP3104B40	FREP TEFC 36L/M 205 BRG W/ECM CABLE SLOT	1.000 ea
HA4067A01	PUSH IN DRAIN FITTING (BLACK)	1.000 ea
HW5100A05	WVY WSHR F/205 & 304 BRGS	1.000 ea
36EP3100A42	PU EP, LOCKED 206 BRG, NO GRS	1.000 ea
HA4067A01	PUSH IN DRAIN FITTING (BLACK)	1.000 ea
10XN2520A20	1/4-20X 1 1/4 HEX HD X	2.000 ea
HW1001A25	LOCKWASHER 1/4, ZINC PLT .493 OD, .255 I	2.000 ea
XY2520A12	1/4-20 HEX NUT, DIRECTIONAL SERRATIONS	4.000 ea
36FN3000C01SP	EXFN, PLASTIC, 5.25 OD, .912 ID	1.000 ea
51XB1214A16	12-14X1.00 HXWSSLD SERTYB	1.000 ea
36FH3005	36 FRAME ODE ECM FAN HOUSING	1.000 ea
51XW1032A08	10/32X1/2 HXWSHR HD, SL, SERATED	3.000 ea
GS0027	ECM GASKET,36 ODE MOUNT,HEATSINK TO FAN	1.000 ea
WD4100A66	HEYCO #3835 KNOCKOUT PLUG(KOS-LT 3/4) BL	2.000 ea
HS0053A00	36 FRAME ODE ECM HEATSINK MACHINING	1.000 ea
MH4001F02	C-2 GLASS SLV-YELLOW #2 (per ft)	0.500 ft
GS0027	ECM GASKET,36 ODE MOUNT,HEATSINK TO FAN	1.000 ea
WD4100A30	HEYCO #3833 RUBBER PLUG KOS-LT - 1/2	2.000 ea
11XW1032A10	10-32 X .62, TAPTITE II, HEX WSHR SLTD	4.000 ea
36CB3500A00	36 FRAME ODE ECM PLASTIC COVER WITH FOAM	1.000 ea
15XN1032A10	SCREW PAN HD 10-32 X .625 (PHILLIPS)	4.000 ea
MJ5002A02	NON-CORROSIVE SILICONE, DOW 748, 10.3 OZ	0.001 ea
HW4600B36SP	V-RING SLINGER 1.188 X 1.380 X .24 VITON	1.000 ea
HW2501E16	KEY, 1/4 SQ X 1.750	1.000 ea
HA7000A02	KEY RETAINER RING, 1 1/8 DIA, 1 3/8 DIA	1.000 ea
MJ1000A02	GREASE, POLYREX EM EXXON	0.050 lb
HA3101A25	THRUBOLT 1/4-20 X 11.000 OHIO ROD	4.000 ea

15XN1032A14	10-32X7/8 PH PAN HD MACHINE ZINC SC	3.000 ea
MG1050G01	CELEROL MEDIUM CHARCOAL METALLIC GRAY	0.022 ga
NP3968A01A01	NP LABEL WEE, SH GND, C-UL-US, QR, ECS	1.000 ea
NP3978A01	MYLAR BALDOR-RELIANCE SYNC IPM DRIVE 4.3	1.000 ea
GOPA1000	PKG GRP, PRINT PK1026A06	1.000 ea
MN451	EC Titanium Quick Start 06/22	1.000 ea
PE-0000001	ZRTG PE ASSEMBLY	1.000 ea
LB1624	COMBINED WARNING LABEL, ISO/ANSI PICTOGR	1.000 ea

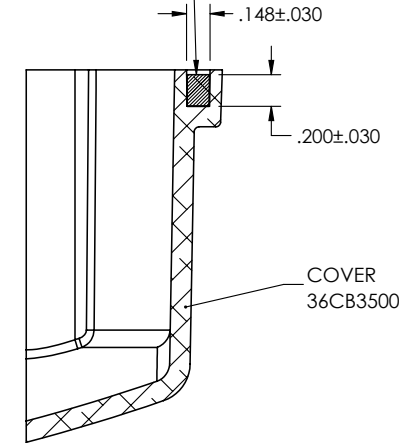
36LYT259



36CB3500A00



MATERIAL: RAMPF, RAKU-PUR 32-3280-51L



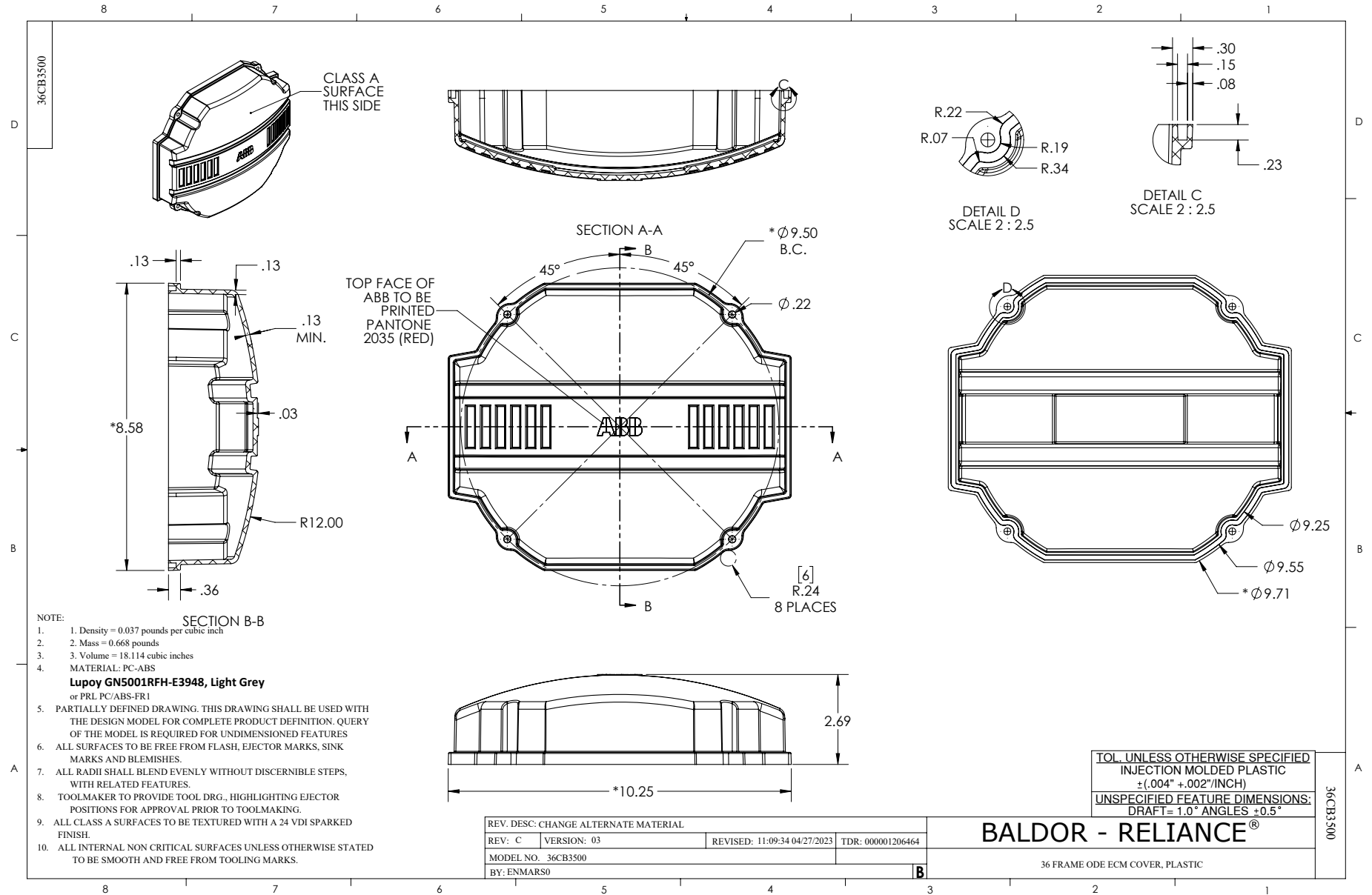
SECTION A-A

36CB3500A00

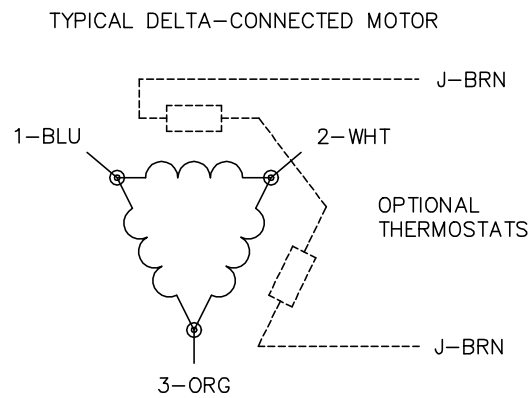
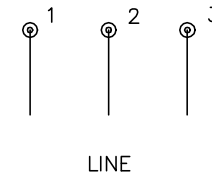
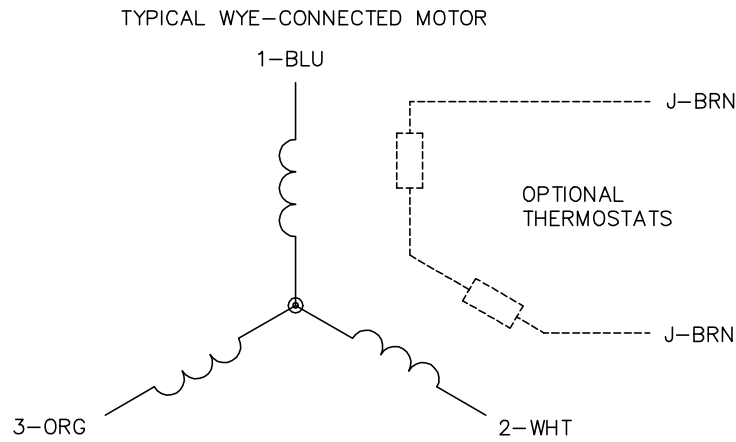
REV. DESC: UPDATE MATERIAL			
REV: A	VERSION: 01	REVISED: 10:45:08 03/29/2019	TDR: 000001101646
MODEL NO. 36CB3500A00		REF: -	
BY: ENMARS0		Material: -	

BALDOR - RELIANCE®

36 FRAME ODE ECM COVER WITH FOAM SEAL



CD0006



NOTES:

1. THREE LEAD MOTOR MAY BE EITHER WYE CONNECTED OR DELTA CONNECTED.
2. INTERCHANGE ANY TWO LINE LEADS TO REVERSE ROTATION.
3. OPTIONAL THERMOSTATS ARE PROVIDED WHEN SPECIFIED.
4. ACTUAL NUMBER OF INTERNAL PARALLEL CIRCUITS MAY VARY.
5. LEAD COLORS ARE OPTIONAL. LEADS MUST BE NUMBERED AS SHOWN.

CD0006

REV. DESC: ADD CLASS CONN00000007		
REV. LTR: E	VERSION: 01	TDR: 000001099922
FILE: \AAA\00005\141	REVISED: 10:24:49 02/19/2019	BY: ENBRIRO
MTL: -	© □	

BALDOR - RELIANCE®

3PH, SV, 3 LEADS, WYE OR DELTA CONNECTED

SH 1 of 1