

BALDOR® • RELIANCE 

Product Information Packet

ECS100T1H1DF4

1HP,1800RPM,1PH,60HZ,143T,TEFC,TOP

Part Detail							
Revision:	J	Status:	PRD/A	Change #:		Proprietary:	No
Type:	AC	Elec. Spec:	35WGZ719	CD Diagram:	CD0006	Mfg Plant:	
Mech. Spec:	35E5209	Layout:	35LYE5209	Poles:	04	Created Date:	05-31-2019
Base:	RG	Eff. Date:	11-02-2020	Leads:	3#16		

Specs			
Catalog Number:	ECS100T1H1DF4	IP Rating:	NONE
Enclosure:	TEFC	Lifting Lugs:	No Lifting Lugs
Frame:	143T	Locked Bearing Indicator:	Locked Bearing
Frame Material:	Steel	Motor Lead Quantity/Wire Size:	3 @ 16 AWG
XP Class and Group:	None	Motor Lead Termination:	Flying Leads
XP Division:	Not Applicable	Motor Type:	3514B
Agency Approvals:	UL	Mounting Arrangement:	F1
	WEEE	Product Family:	General Purpose
Auxillary Box:	No Auxillary Box	Pulley Face Code:	Standard
Auxillary Box Lead Termination:	None	Rodent Screen:	None
Base Indicator:	Rigid	RoHS Status:	ROHS COMPLIANT
Bearing Grease Type:	Polyrex EM (-20F +300F)	Shaft Ground Indicator:	Shaft Grounding
Blower:	None	Shaft Rotation:	Reversible
Constant Torque Speed Range:	6	Speed Code:	Single Speed
Design Code:	B	Motor Standards:	NEMA
Drip Cover:	No Drip Cover	Starting Method:	INVERTER SPECIAL
Electrically Isolated Bearing:	Not Electrically Isolated	Thermal Device - Bearing:	None
Feedback Device:	NO FEEDBACK	Thermal Device - Winding:	None

Heater Indicator:	No Heater	Vibration Sensor Indicator:	No Vibration Sensor
Inverter Code:	Inverter Duty	Winding Thermal 1:	None
		Winding Thermal 2:	None

Nameplate NP3968A01A01	
CAT.NO.	ECS100T1H1DF4
SPEC.	35E5209Z719G4
FRAME	143T
HP	1
NOM. EFF.	89.3%
VOLTS	230
RPM	1800
HZ	60
BEMF (V)	124
LD (MH)	48.7
VPWM	CHP 60
CT	6
MATCHED INV	ECI1A3P2
DE	6205
SERIAL #	
	ENCL. TEFC
	IP 54
	C AMB
	CONT
	PF 96.6%
	SF 1.0
	FLA 2.3
	RPM-MAX 4000
	PH. 3
	CLASS F
	RS (OHMS) 5.98
	LQ (MH) 180.4
	TO 133
	VT 1
	TO 60
	ODE 6203

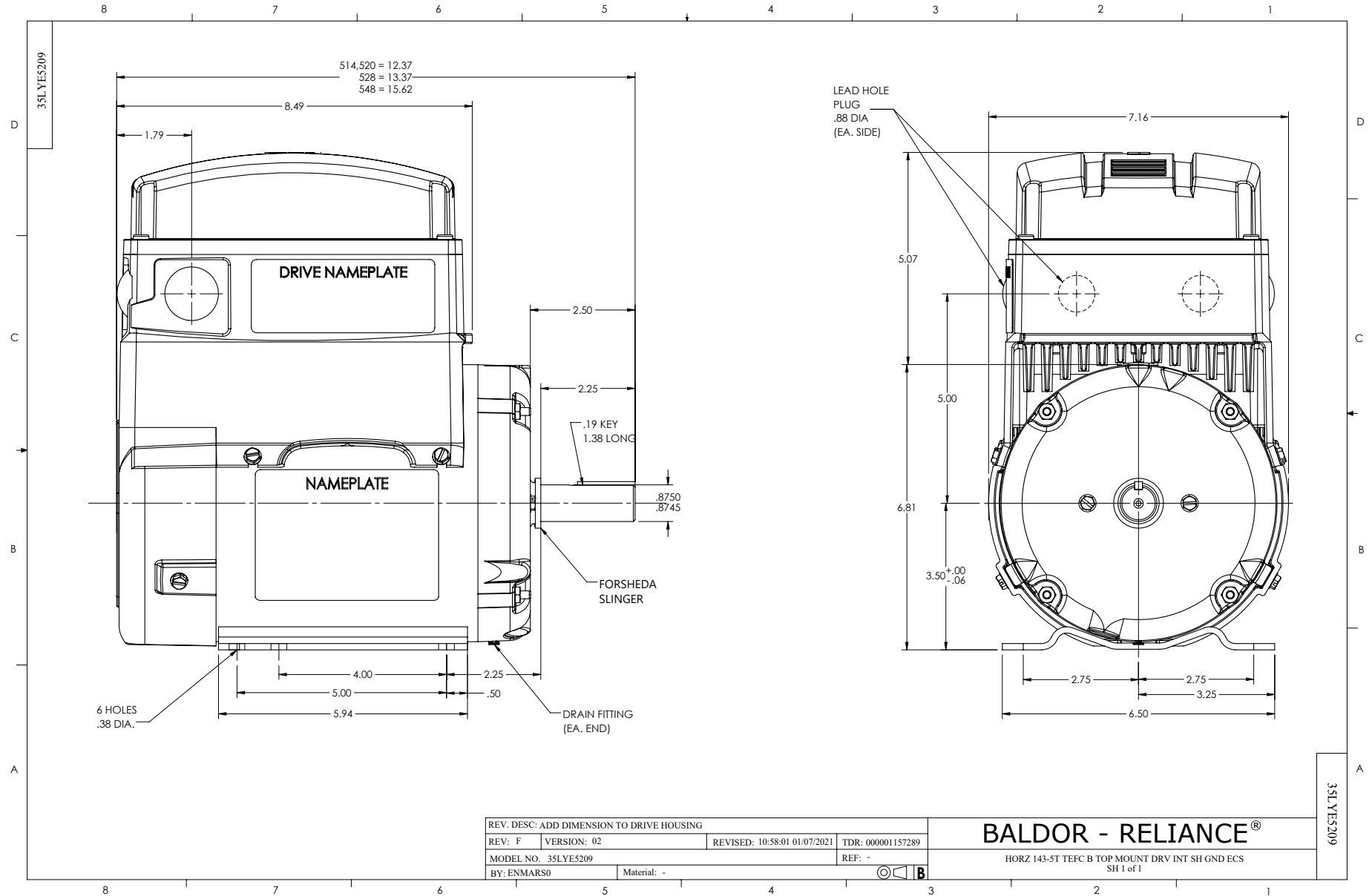
Nameplate NP3978A01

PART NO.	EC11A3P2		
U1	120	PH 1	HZ 60
I1	10.3	W/EXT. CHOKE 8.6	
SERIAL #			

Parts List		
Part Number	Description	Quantity
SA372797	SA 35E5209Z719G4	1.000 EA
RA362555	RA 35E5209Z719G4	1.000 EA
EC11A3P2	100-120V 1PH IN/230V 3PH OUT, 1.0HP, 3.2	1.000 EA
35EP3122K00	MASTER ODE,203 BRG,.683SH,#26 DRN,FH MTG	1.000 EA
HA4067A01	PUSH IN DRAIN FITTING (BLACK)	1.000 EA
HW5100A03	WAVY WASHER (W1543-017)	1.000 EA
35EP3123C00	MASTER DE,205 BRG,.998 SH,#26 DRN,LCK BR	1.000 EA
HA4067A01	PUSH IN DRAIN FITTING (BLACK)	1.000 EA
51XN1032A18	10-32 X 1 1/8 HX WS SL SR (ESKAY)	2.000 EA
XY1032A02	10-32 HEX NUT DIRECTIONAL SERRATION	4.000 EA
51XB1214A16	12-14X1.00 HXWSSLD SERTYB	1.000 EA
35FH3006	35 FRAME TOP ECM FAN HOUSING	1.000 EA
51XW1032A06	10-32 X .38, TAPTITE II, HEX WSHR SLTD S	2.000 EA
15XN0832A12	SCREW, 8/32 X 3/4" PAN HDPHIL, MS	3.000 EA
HS0052A00	35 FRAME TOP ECM HEATSINK MACHINING	1.000 EA
GS0025	35 FRAME TOP MOUNT GASKET	1.000 EA
WD4100A30	HEYCO #3833 RUBBER PLUG KOS-LT - 1/2	4.000 EA
51XB1016A07	10-16 X 7/16 HXWSSLD SERTYB	4.000 EA
35CB3505A00	35 FRAME TOP ECM PLASTIC COVER WITH FOAM	1.000 EA
15XN1032A10	SCREW PAN HD 10-32 X .625 (PHILLIPS)	4.000 EA
MJ5002A02	NON-CORROSIVE SILICONE, DOW 748, 10.3 OZ	0.001 EA
HW4600B32SP	V-RING SLINGER 1.000 X 1.540 X .24 VITON	1.000 EA
HW2501D13	KEY, 3/16 SQ X 1.375	1.000 EA
HA7000A01	KEY RETAINER 7/8" DIA SHAFT	1.000 EA

Parts List (continued)		
Part Number	Description	Quantity
MJ1000A02	GREASE, MOBIL POLYREX EM - 124047	0.050 LB
35FN3002A05SP	EXFN, PLASTIC, 6.376 OD, .638 ID	1.000 EA
HA3100A15	THRUBOLT 10-32 X 8.375	4.000 EA
MG1000G27	MED CHARCOAL METALLIC GREY 400-0096	0.017 GA
NP3968A01A01	NP LABEL WEE, SH GND, C-UL-US, QR, ECS	1.000 EA
NP3978A01	MYLAR BALDOR-RELIANCE SYNC IPM DRIVE 4.3	1.000 EA
36PA1001	PKG GRP, PRINT PK1017A06	1.000 EA
MN451	EC Titanium Quick Start 04/20	1.000 EA
FE-0000001	ZRTG FE ASSEMBLY	1.000 EA
PE-0000001	ZRTG PE ASSEMBLY	1.000 EA

No performance data has been
assigned to this product.



CD0006



NOTES:

1. THREE LEAD MOTOR MAY BE EITHER WYE CONNECTED OR DELTA CONNECTED.
2. INTERCHANGE ANY TWO LINE LEADS TO REVERSE ROTATION.
3. OPTIONAL THERMOSTATS ARE PROVIDED WHEN SPECIFIED.
4. ACTUAL NUMBER OF INTERNAL PARALLEL CIRCUITS MAY VARY.
5. LEAD COLORS ARE OPTIONAL. LEADS MUST BE NUMBERED AS SHOWN.

CD0006

REV. DESC: ADD CLASS CONN00000007		
REV. LTR: E	VERSION: 01	TDR: 000001099922
FILE: \AAA\00005\141	REVISED: 10:24:49 02/19/2019	BY: ENBRIRO
MTL: -	© □	

BALDOR - RELIANCE®

3PH, SV, 3 LEADS, WYE OR DELTA CONNECTED

SH 1 of 1