



Customer information packet

EM2515T-58

20HP, 1470RPM, 3PH, 50HZ, 256T, 3956M, OPSB, F3

Class - None

Division - Not Applicable

Specifications

Enclosure	OPSB
Frame	256T
Frame Material	Steel
Frequency	50.00 Hz
Motor Letter Type	Three Phase
Output @ Frequency	20.000 HP @ 50 HZ
Phase	3
Synchronous Speed @ Frequency	1500 RPM @ 50 HZ
Voltage @ Frequency	400.0 V @ 50 HZ
XP Class and Group	None
XP Division	Not Applicable
Agency Approvals	CE CSA IE3 ROHS UR WEEE
Ambient Temperature	40 °C
Auxillary Box	No Auxillary Box
Auxillary Box Lead Termination	None
Base Indicator	Rigid
Bearing Grease Type	Polyrex EM (-20F +300F)
Blower	None
Current @ Voltage	28.000 A @ 400.0 V
Design Code	B
Drip Cover	No Drip Cover
Duty Rating	CONT
Efficiency @ 100% Load	92.1 %
Electrically Isolated Bearing	Not Electrically Isolated
Feedback Device	NO FEEDBACK
Front Face Code	Standard
Front Shaft Indicator	None

Part detail

Revision	H
Type	AC
Mech. spec.	39E318
Base	
Status	PRD/A
Elec. spec.	39WGX494
Layout	39LYE318
Eff. date	11-22-2022
CD Diagram	CD0382
Poles	04
Leads	6#10
Proprietary	False
Created date	04-03-2015

Heater Indicator	No Heater
High Voltage Full Load Amps	28.0 a
Insulation Class	F
Inverter Code	Inverter Ready
KVA Code	H
Lifting Lugs	Standard Lifting Lugs
Locked Bearing Indicator	No Locked Bearing
Motor Lead Exit	Ko Box
Motor Lead Quantity/Wire Size	6 @ 10 AWG
Motor Lead Termination	Flying Leads
Motor Standards	NEMA
Motor Type	3956M
Mounting Arrangement	F3
Number of Poles	4
Overall Length	23.19 IN
Power Factor	85
Product Family	General Purpose
Pulley End Bearing Type	Ball
Pulley Face Code	Standard
Pulley Shaft Indicator	Standard
Rodent Screen	Included
RoHS Status	ROHS COMPLIANT
Service Factor	1.15
Shaft Diameter	1.625 IN
Shaft Extension Location	Pulley End
Shaft Ground Indicator	No Shaft Grounding
Shaft Rotation	Reversible
Shaft Slinger Indicator	No Slinger
Speed	1470 rpm
Speed Code	Single Speed
Starting Method	Wye Start - Delta Run
Thermal Device - Bearing	None
Thermal Device - Winding	None
Vibration Sensor Indicator	No Vibration Sensor

Winding Thermal 1

None

Winding Thermal 2

None

Nameplate

NP2716L										
CAT NO	EM2515T-58									
SPEC.	39E318X494G1									
HP	20HP/15KW						PH	3		
VOLTS	400									
AMP	28									
RPM	1470 1/MIN									
FRAME	256T		HZ	50			I.P.	23		
SER.F.	1.15	CODE	H	DES	B	CL	F			
NOM.EFF.	92.1		% (100%)							
PF	85		USABLE AT 208V							
RATING	40C AMB-S1 CONT				CC					
DE BRG	6309		ODE	6208						
ENCL	OPSB	SN								
BLANK	IE3-92.6(75%)91.8(50%)									
	IC01 127KG									

Parts list

Part number	Description	Quantity
SA296423	SA 39E318X494G1	1.000 ea
RA282463	RA 39E318X494G1	1.000 ea
HA6361A01	LIFTING LUG FOR 37, 39 & 40 FRAME ZINC	2.000 ea
HA6016	ADAPTER, CAST CONDUIT BOX	1.000 ea
09CB3003	CB W/1.75" DIA LD HL - 37, 39, 307 & 309	1.000 ea
51XW2520A12	.25-20 X .75, TAPTITE II, HEX WSHR SLTD	2.000 ea
HW1001A25	LOCKWASHER 1/4, ZINC PLT .493 OD, .255 I	2.000 ea
WD1000B16	T&B CX70TN OR L70P TERMINAL LUG	1.000 ea
59XW2520G07	.25-20X.44,HEX SER WSHR,TAPTITE 2,GREEN	1.000 ea
HA1101A01	RODENT SCREEN, 39 MTR	1.000 ea
51XW1032A06	10-32 X .38, TAPTITE II, HEX WSHR SLTD S	4.000 ea
39EP3200A01SP	FR/PU ENDPLATE, MACH	1.000 ea
HW5100A08	W3118-035 WVY WSHR (WB)	1.000 ea
39EP3201A13	PU ENDPLATE, MACH	1.000 ea
HA1101A01	RODENT SCREEN, 39 MTR	1.000 ea
51XW1032A06	10-32 X .38, TAPTITE II, HEX WSHR SLTD S	4.000 ea
XY3816A12	3/8-16 FINISHED NUT	8.000 ea
09CB3501SP	CONDUIT BOX LID FOR 09CB3001 & 09CB3002	1.000 ea
51XW2520A12	.25-20 X .75, TAPTITE II, HEX WSHR SLTD	2.000 ea
HW2501G25	KEY, 3/8 SQ X 2.875	1.000 ea
LB1115N	LABEL,LIFTING DEVICE (ON ROLLS)	1.000 ea
HW4500A03	GREASE FITTING, .125 NPT 1610(ALEMITE) 8	1.000 ea
HW4500A20	1/8NPT SL PIPE PLUG	1.000 ea
HA4051A00	PLASTIC CAP FOR GREASE FITTING	1.000 ea
MJ1000A02	GREASE, POLYREX EM EXXON	0.030 lb
HW4500A03	GREASE FITTING, .125 NPT 1610(ALEMITE) 8	1.000 ea
HW4500A20	1/8NPT SL PIPE PLUG	1.000 ea
HA4051A00	PLASTIC CAP FOR GREASE FITTING	1.000 ea
MG1000Y03	MUNSELL 2.53Y 6.70/ 4.60, GLOSS 20,	0.050 ga
85XU0407S04	4X1/4 U DRIVE PIN STAINLESS	2.000 ea
39AD2002A01	BAFFLE PLATE 39 OPEN, SLOTTED BAND MTRS	1.000 ea

39AD2002A01	BAFFLE PLATE 39 OPEN, SLOTTED BAND MTRS	1.000 ea
HA3154A03	STUD, 3/8-16 X 17.75	4.000 ea
LB1119N	WARNING LABEL	1.000 ea
LC0382	CONNECTION LABEL	1.000 ea
NP2716L	ALUM SUPER-E NEMA IE3 UL CSA CC CE	1.000 ea
40PA1000	PACKAGING GROUP	1.000 ea
MN416A01	TAG-INSTAL-MAINT no wire (2100bx)4/22	1.000 ea
LD7020E06	LEAD SET, 10AWG, 6 LEAD, 20" LONG LEADS	1.000 ea
LB1617	UKCA COMPLIANCE STICKER	1.000 ea

AC Induction Motor Performance Data

Record # 49907

Typical performance - not guaranteed values

Winding: 39WGX494-R003		Type: 3956M	Enclosure: OPEN	
Nameplate Data			400 V, 50 Hz: Single Voltage Motor	
Rated Output (HP)	20	Full Load Torque	72 LB-FT	
Volts	400	Start Configuration	direct on line	
Full Load Amps	28	Breakdown Torque	266 LB-FT	
R.P.M.	1470	Pull-up Torque	111 LB-FT	
Hz	50 Phase	3	Locked-rotor Torque	184 LB-FT
NEMA Design Code	B KVA Code	H	Starting Current	205 A
Service Factor (S.F.)		1.15	No-load Current	12.3 A
NEMA Nom. Eff.	92.1 Power Factor	85	Line-line Res. @ 25°C	0.355 Ω
Rating - Duty		40C AMB-CONT	Temp. Rise @ Rated Load	43°C
S.F. Amps			Temp. Rise @ S.F. Load	53°C

Load Characteristics 400 V, 50 Hz, 20 HP

% of Rated Load	25	50	75	100	125	150	S.F.
Power Factor	45	69	79	85	86	87	86
Efficiency	87.9	91.8	92.6	92.4	91.5	90.5	91.9
Speed	1493	1486	1478	1470	1460	1451	1464
Line amperes	13.8	17.4	22.3	27.8	34.1	40.9	31.6

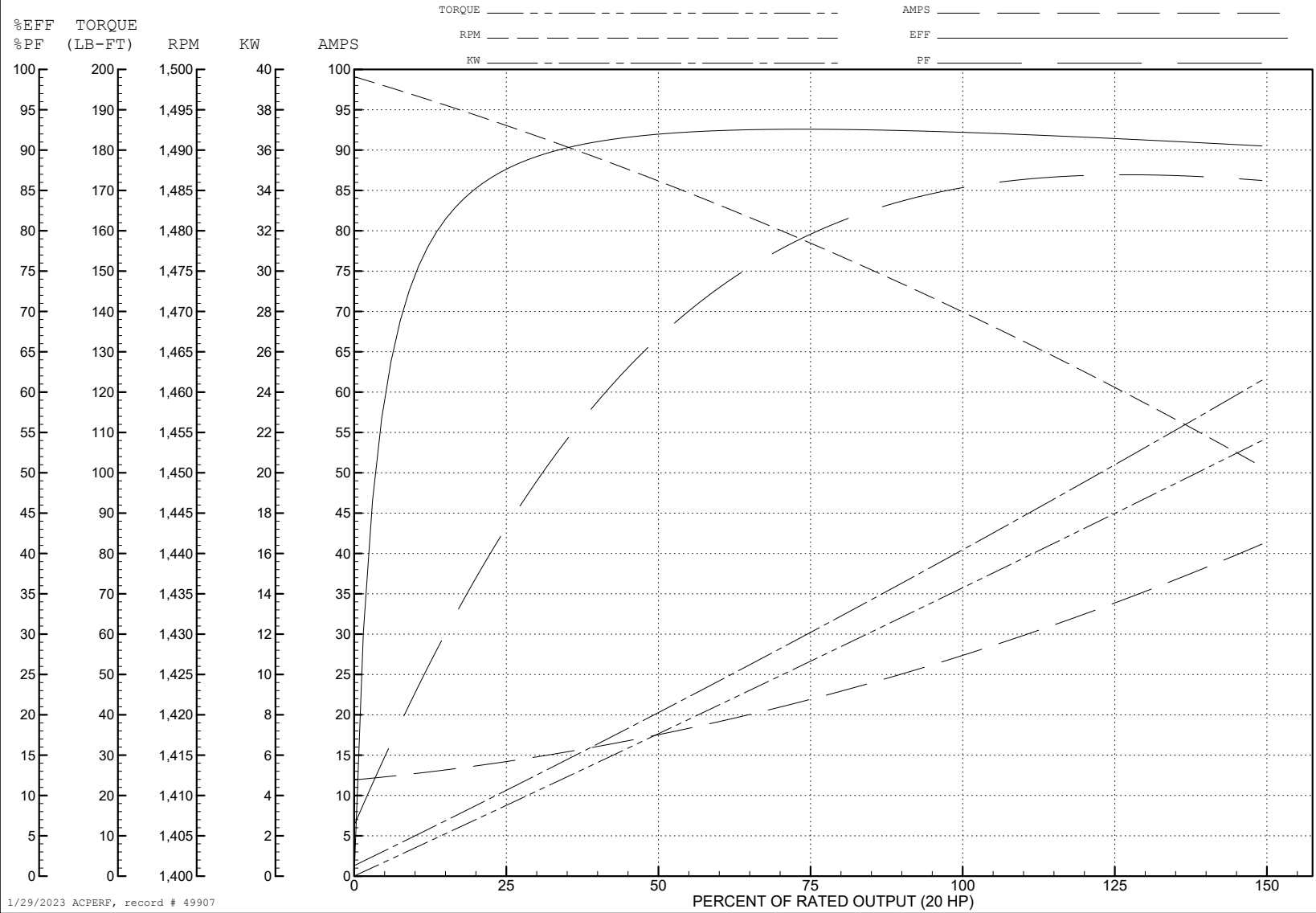
ABB Motors and Mechanical Inc.

WINDING # 39WGX494

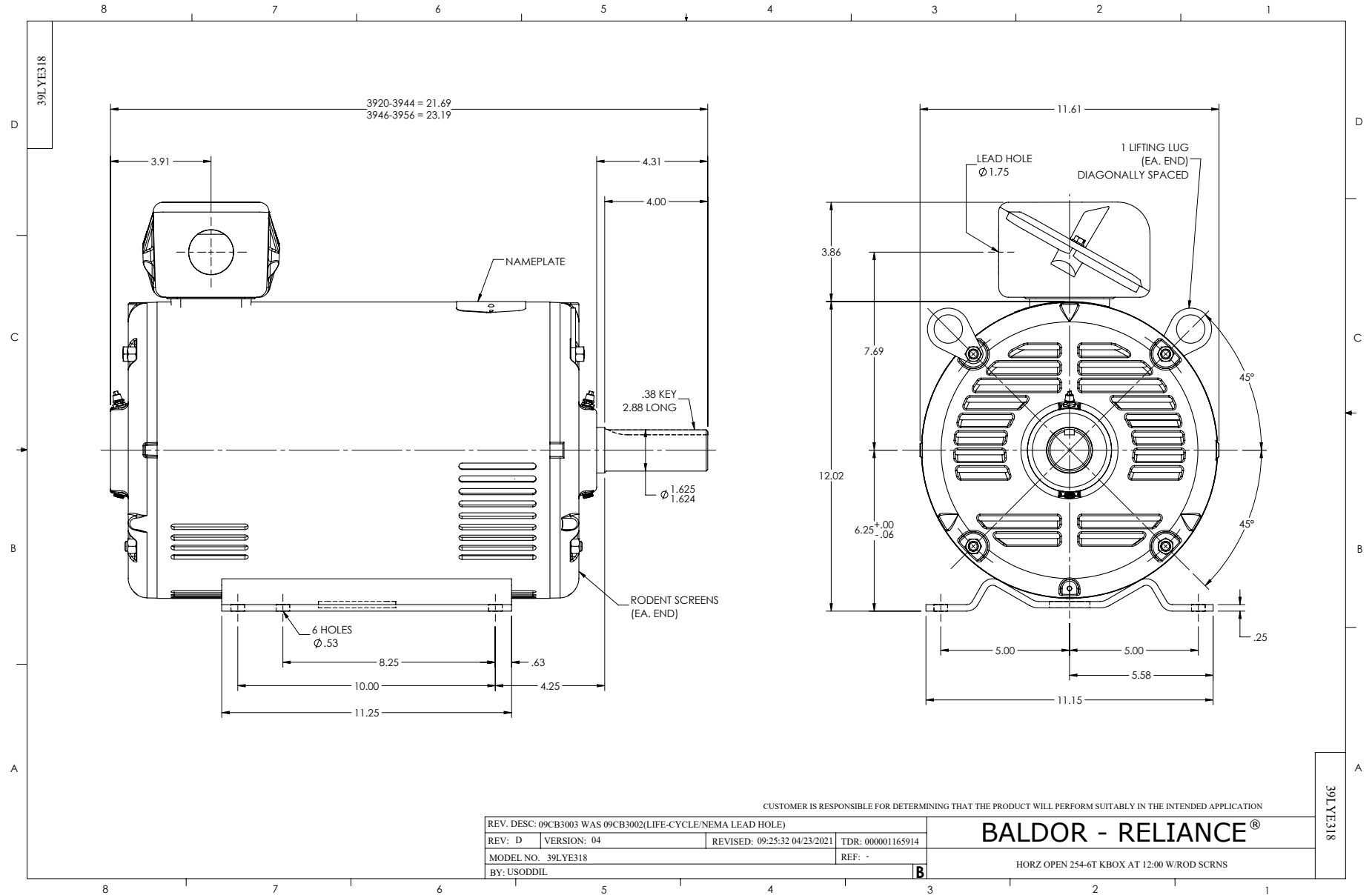
Typical performance - not guaranteed values.

20 HP 3 PH 50 HZ 1470 RPM 400 V 3956M

TORQUES (LB-FT): PO=266 PU=111 LR=184 LRA=205



1/29/2023 ACPERF, record # 49907



CUSTOMER IS RESPONSIBLE FOR DETERMINING THAT THE PRODUCT WILL PERFORM SUITABLY IN THE INTENDED APPLICATION

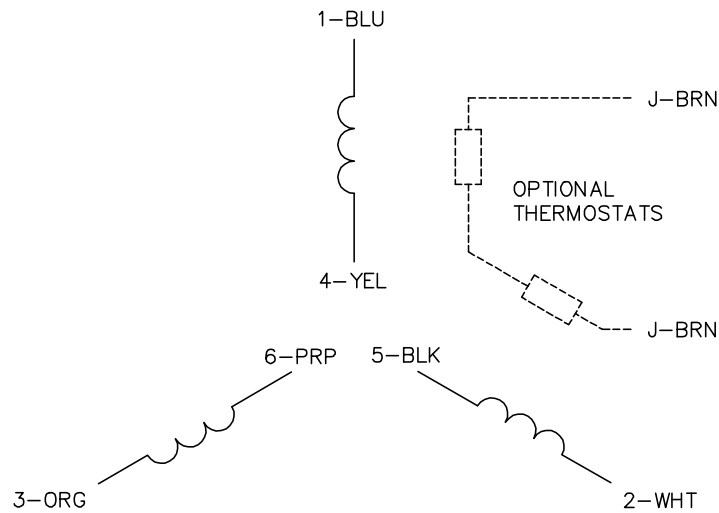
REV. DESC: 09CB3003 WAS 09CB3002(LIFE-CYCLE/NEMA LEAD HOLE)			
REV: D	VERSION: 04	REVISED: 09:25:32 04/23/2021	TDR: 000001165914
MODEL NO. 39LYE318		REF: -	
BY: USODDIL		B	

BALDOR - RELIANCE®

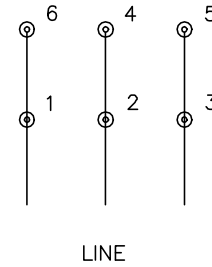
HORZ OPEN 254-6T KBOX AT 12:00 W/ROD SCRNS

39LYE318

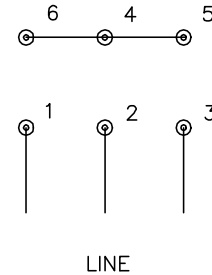
CD0382



RUN CONNECTION (1D)



START CONNECTION (1Y)



NOTES:

1. INTERCHANGE ANY TWO LINE LEADS TO REVERSE ROTATION.
2. OPTIONAL THERMOSTATS ARE PROVIDED WHEN SPECIFIED.
3. ACTUAL NUMBER OF INTERNAL PARALLEL CIRCUITS MAY BE A MULTIPLE OF THOSE SHOWN ABOVE.
4. LEAD COLORS ARE OPTIONAL. LEADS MUST ALWAYS BE NUMBERED AS SHOWN.
5. FOR ACROSS-THE-LINE STARTING, USE 'RUN' CONNECTION.

CD0382

REV. DESC: ADD CLASS CONN00000007		
REV. LTR: F	VERSION: 01	TDR: 000001099922
FILE: \AAA\00005\243	REVISED: 09:05:32 02/19/2019	BY: ENBRIRO
MTL: -	© □	

BALDOR - RELIANCE®

3PH, SV, 6 LEADS, Y START/D RUN

SH 1 of 1