

BALDOR • RELIANCE

Customer information packet

35E362G004G1

1//.75HP, 1760//1460RPM, 3PH, 60//50HZ, 143T

Class - CLI GP D; CLII GP F,G

Division - Division I

Specifications

Enclosure	XPFC
Frame	143T
Frame Material	Steel
Frequency	50.00 Hz 60.00 Hz
Motor Letter Type	Three Phase
Output @ Frequency	.750 HP @ 50 HZ 1.000 HP @ 60 HZ
Phase	3
Synchronous Speed @ Frequency	1800 RPM @ 60 HZ
Voltage @ Frequency	460.0 V @ 60 HZ 380.0 V @ 50 HZ 230.0 V @ 60 HZ 190.0 V @ 50 HZ
XP Class and Group	CLI GP D; CLII GP F,G
XP Division	Division I
Agency Approvals	CSA EEV UL
Ambient Temperature	40 °C
Auxillary Box	No Auxillary Box
Auxillary Box Lead Termination	None
Base Indicator	Rigid
Bearing Grease Type	Polyrex EM (-20F +300F)
Blower	None
Current @ Voltage	3.260 A @ 230.0 V 3.200 A @ 208.0 V 3.080 A @ 190.0 V 1.630 A @ 460.0 V 1.540 A @ 380.0 V
Design Code	B
Drip Cover	No Drip Cover
Duty Rating	CONT

Part detail

Revision	A
Type	AC
Mech. spec.	35E362
Base	
Status	PRD/A
Elec. spec.	35WGG004
Layout	35LYE362
Eff. date	07-14-2022
CD Diagram	CD0005
Poles	04
Leads	9#18 Y
Proprietary	False
Created date	01-10-2022

Efficiency @ 100% Load	85.5 %
Electrically Isolated Bearing	Not Electrically Isolated
Feedback Device	NO FEEDBACK
Front Shaft Indicator	None
Heater Indicator	No Heater
High Voltage Full Load Amps	1.5 a
Insulation Class	F
Inverter Code	Not Inverter
KVA Code	N
Lifting Lugs	No Lifting Lugs
Locked Bearing Indicator	No Locked Bearing
Motor Lead Quantity/Wire Size	9 @ 18 AWG
Motor Lead Termination	Flying Leads
Motor Standards	NEMA
Motor Type	X3520M
Mounting Arrangement	F1
Number of Poles	4
Overall Length	14.36 IN
Power Factor	67
Product Family	General Purpose
Pulley End Bearing Type	Ball
Pulley Face Code	Standard
Pulley Shaft Indicator	Standard
Rodent Screen	None
Service Factor	1.00
Shaft Diameter	0.875 IN
Shaft Ground Indicator	No Shaft Grounding
Shaft Rotation	Reversible
Shaft Slinger Indicator	No Slinger
Speed	1475 rpm 1760 rpm
Speed Code	Single Speed
Starting Method	Direct on line
Thermal Device - Bearing	None

Thermal Device - Winding	Normally Closed Thermostat
Vibration Sensor Indicator	No Vibration Sensor
Winding Thermal 1	None
Winding Thermal 2	None
XP Temp Code	T3C

Nameplate

NP1426XPSLEV				
NO.		CC	010A	
SER.				
SPEC.	35E362G004G1			
CAT.NO.				
HP	1//.75	T. CODE	T3C	
VOLTS	230/460//190/380			
AMPS	3.26/1.63//3.08/1.54			
RPM	1760//1475			
HZ	60//50	PH	3	CL F
SER.F.	1.00	DES	B	CODE N
RATING	40C AMB-CONT			
FRAME	143T	NEMA-NOM-EFF	85.5	
USABLE AT 208V	N/A	PF	67	
BLANK				

Parts list

Part number	Description	Quantity
SA402583	SA 35E362G004G1	1.000 ea
RA393860	RA 35E362G004G1	1.000 ea
34FN3002B01	EXTERNAL FAN, PLASTIC, .637/.639 HUB W/	1.000 ea
35CB3001A02G	EXPL PROOF CONDUIT BOX,3/4"PIPE TAP LEAD	1.000 ea
11XW1032G06	10-32 X .38, TAPTITE II, HEX WSHR SLTD U	1.000 ea
HW3001B01	BRASS CUP WASHER, FOR #10 SCREW	1.000 ea
35EP3700A01SP	FR ENDPLATE, XPFC	1.000 ea
HW5100A03	WAVY WASHER (W1543-017)	1.000 ea
35EP3701A01	PU ENDPLATE, XPFC - 205 BRG	1.000 ea
XY3118A12	5/16-18 HEX NUT DIRECTIONAL SERRATION	4.000 ea
51XB1214A16	12-14X1.00 HXWSSLD SERTYB	1.000 ea
35FH4005A01SP	IEC FH NO GREASER W/PRIMED	1.000 ea
51XW1032A06	10-32 X .38, TAPTITE II, HEX WSHR SLTD S	3.000 ea
35CB3500A01G	CONDUIT BOX LID, MACH W/FLUIDIZED GRAY	1.000 ea
51XN2520A16	SCREW, HEX WS SLT, ZN, 1/4-20 X 1.00	4.000 ea
HW2501D13	KEY, 3/16 SQ X 1.375	1.000 ea
HA7000A01	KEY RETAINER 7/8" DIA SHAFT	1.000 ea
85XU0407S04	4X1/4 U DRIVE PIN STAINLESS	6.000 ea
NP0018F	ALUM UL XP CONDUIT BOX NAMEPLATE	1.000 ea
HA1025A21	WSHR,FELT .125" THK	1.000 ea
MJ1000A02	GREASE, POLYREX EM EXXON	0.050 lb
MG1025G29	WILKOFAS, 789.229, DARK CHARCOAL GRAY	0.017 ga
HA3104A06	THRUBOLT 5/16-18 X 8.50 OHIO ROD	4.000 ea
LB1119N	WARNING LABEL	1.000 ea
LC0145B01	CONNECTION LABEL	1.000 ea
NP1426XPSLEV	SS XP UL CSA-EEV CC CL-I GP-D	1.000 ea
36PA1001	PKG GRP, PRINT PK1017A06	1.000 ea
MN416A01	TAG-INSTAL-MAINT no wire (2100bx)4/22	1.000 ea

AC Induction Motor Performance Data

Record # 86931

Typical performance - not guaranteed values

Winding: 35WGG004-R010		Type: 3520M	Enclosure: XPFC	
Nameplate Data			460 V, 60 Hz: High Voltage Connection	
Rated Output (HP)	1//.75		Full Load Torque	2.97 LB-FT
Volts	230/460//190/380		Start Configuration	direct on line
Full Load Amps	3.26/1.63//3.08/1.54		Breakdown Torque	13.68 LB-FT
R.P.M.	1760//1475		Pull-up Torque	7.85 LB-FT
Hz	60//50	Phase 3	Locked-rotor Torque	9.01 LB-FT
NEMA Design Code	B KVA Code N		Starting Current	14.13 A
Service Factor (S.F.)	1		No-load Current	1.08 A
NEMA Nom. Eff.	85.5	Power Factor 67	Line-line Res. @ 25°C	16.9 Ω
Rating - Duty	40C AMB-CONT		Temp. Rise @ Rated Load	24°C
			Locked-rotor Power Factor	61.5
			Rotor inertia	0.144 lb-ft ²

Load Characteristics 460 V, 60 Hz, 1 HP

% of Rated Load	25	50	75	100	125	150
Power Factor	30	47	60	69	76	79
Efficiency	72.1	81.7	84.7	85.7	85.5	84.7
Speed	1791	1784	1776	1768	1759	1750
Line amperes	1.11	1.22	1.38	1.59	1.82	2.09

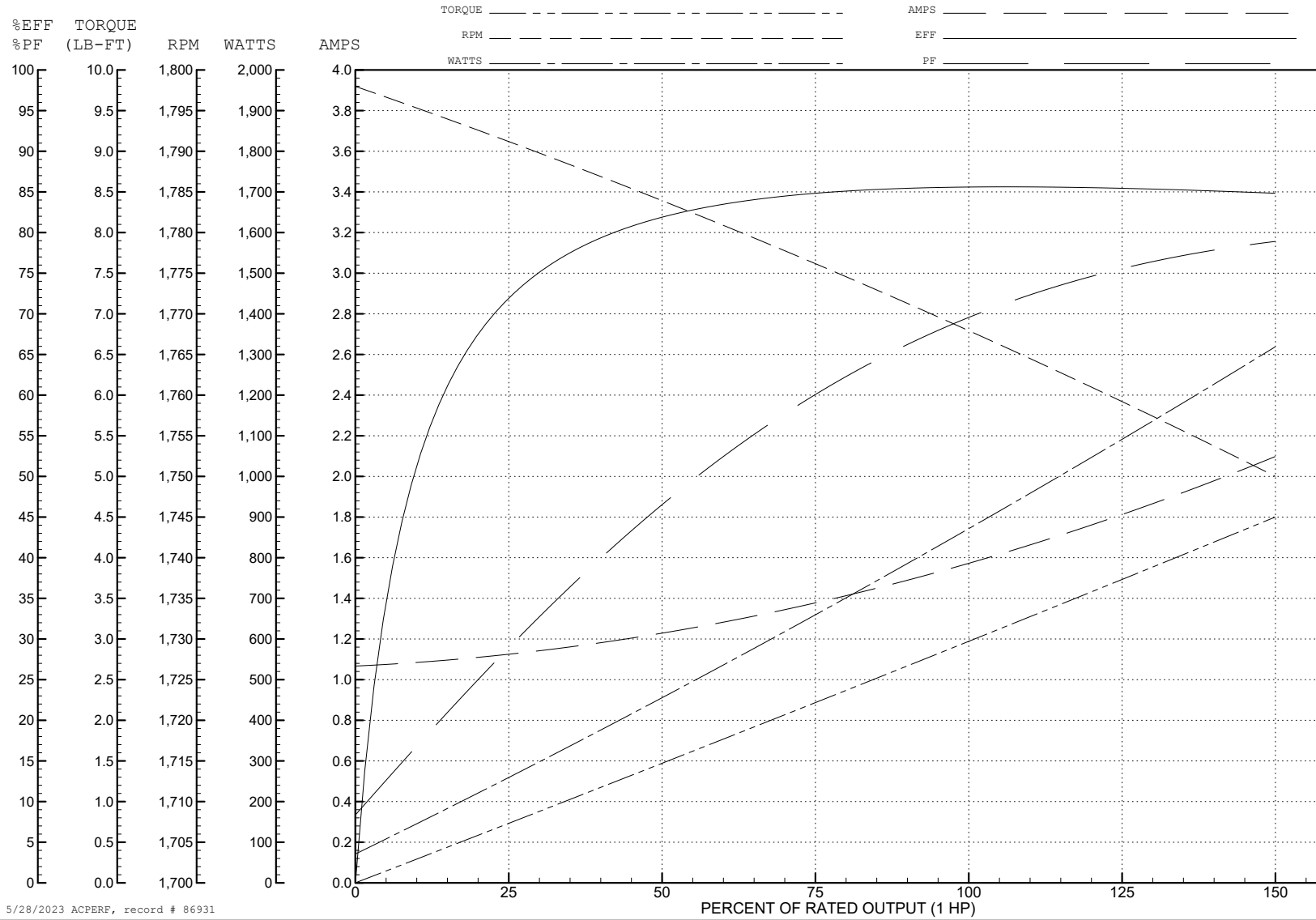
ABB Motors and Mechanical Inc.

WINDING # 35WGG004

Typical performance - not guaranteed values.

1 HP 3 PH 60 HZ 1768 RPM 460 V 3520M

TORQUES (LB-FT): PO=13.68 PU=7.85 LR=9.01 LRA=14.13



5/28/2023 ACPERF, record # 86931

AC Induction Motor Performance Data

Record # 86932

Typical performance - not guaranteed values

Winding: 35WGG004-R010		Type: 3520M	Enclosure: XPFC	
Nameplate Data			380 V, 50 Hz: High Voltage Connection	
Rated Output (HP)	1//.75		Full Load Torque	2.68 LB-FT
Volts	230/460//190/380		Start Configuration	direct on line
Full Load Amps	3.26/1.63//3.08/1.54		Breakdown Torque	12.31 LB-FT
R.P.M.	1760//1475		Pull-up Torque	7.45 LB-FT
Hz	60//50	Phase 3	Locked-rotor Torque	8.55 LB-FT
NEMA Design Code	B	KVA Code N	Starting Current	13.12 A
Service Factor (S.F.)	1		No-load Current	1.06 A
NEMA Nom. Eff.	85.5	Power Factor 67	Line-line Res. @ 25°C	16.9 Ω
Rating - Duty	40C AMB-CONT		Temp. Rise @ Rated Load	22°C
			Locked-rotor Power Factor	67.1
			Rotor inertia	0.144 lb-ft ²

Load Characteristics 380 V, 50 Hz, 0.75 HP

% of Rated Load	25	50	75	100	125	150
Power Factor	29	46	58	67	74	79
Efficiency	68.3	79	82.7	84	83.7	83.2
Speed	1492	1486	1479	1471	1463	1455
Line amperes	1.08	1.18	1.32	1.5	1.71	1.95

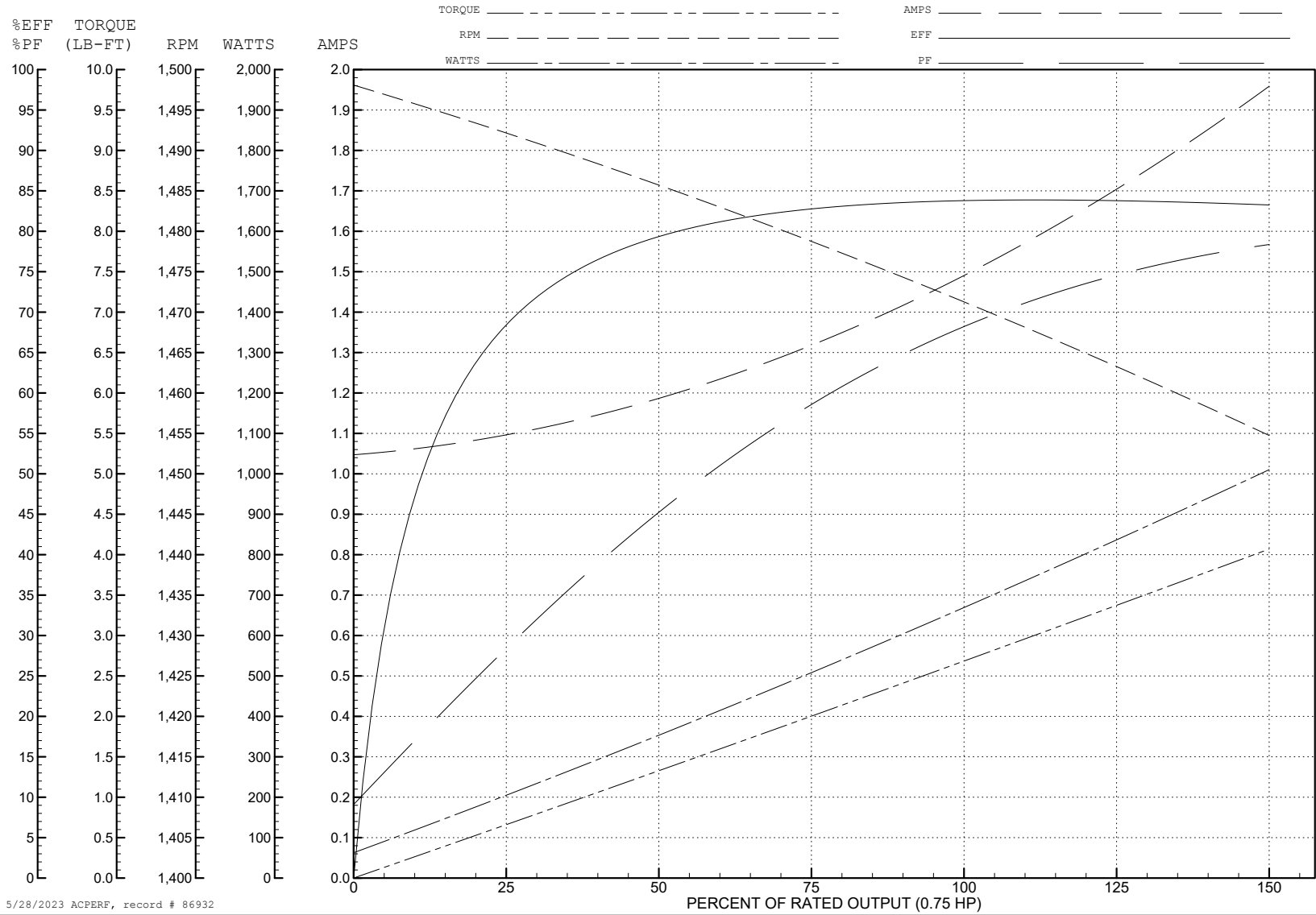
ABB Motors and Mechanical Inc.

WINDING # 35WGG004

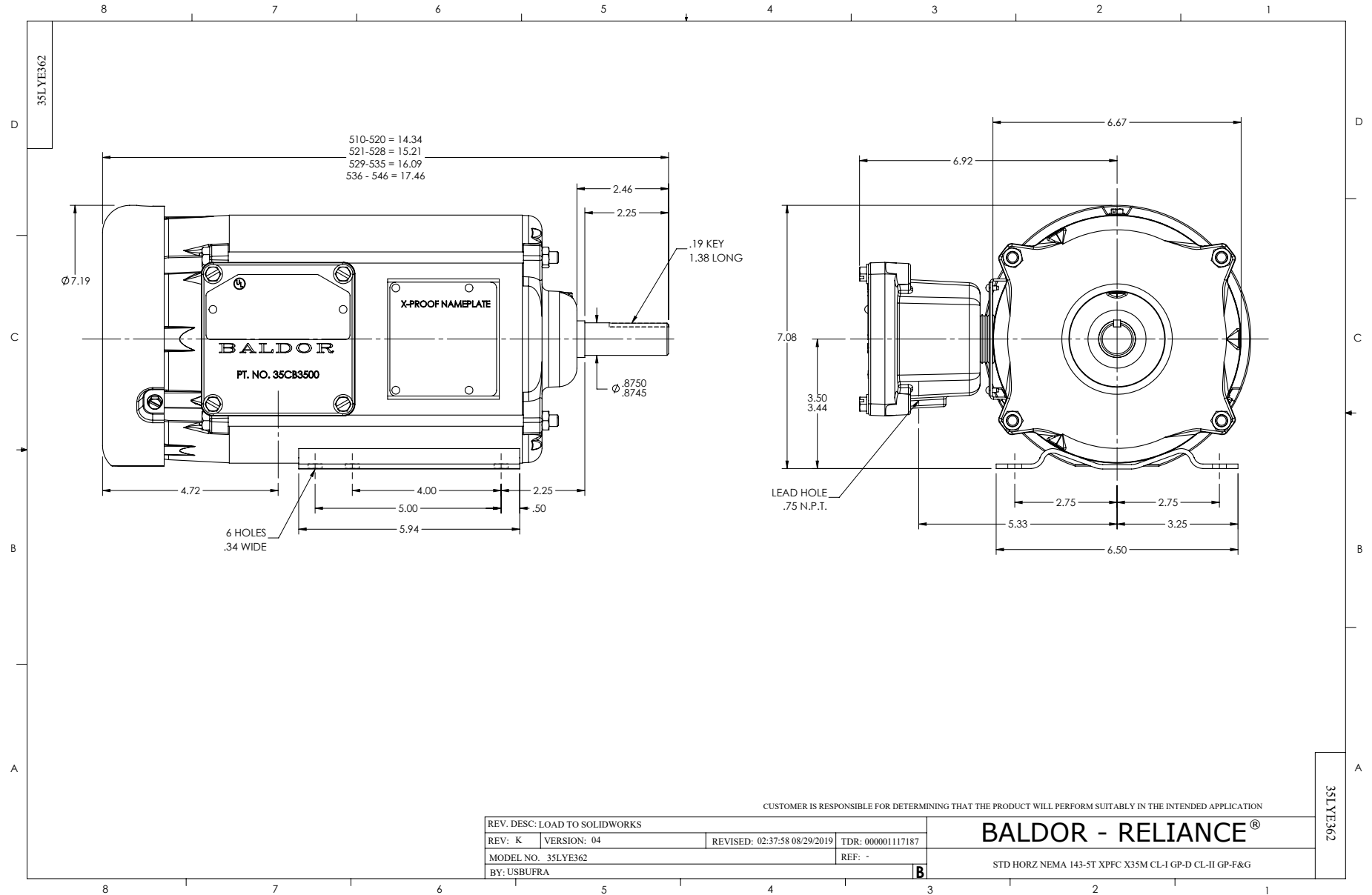
Typical performance - not guaranteed values.

0.75 HP 3 PH 50 HZ 1471 RPM 380 V 3520M

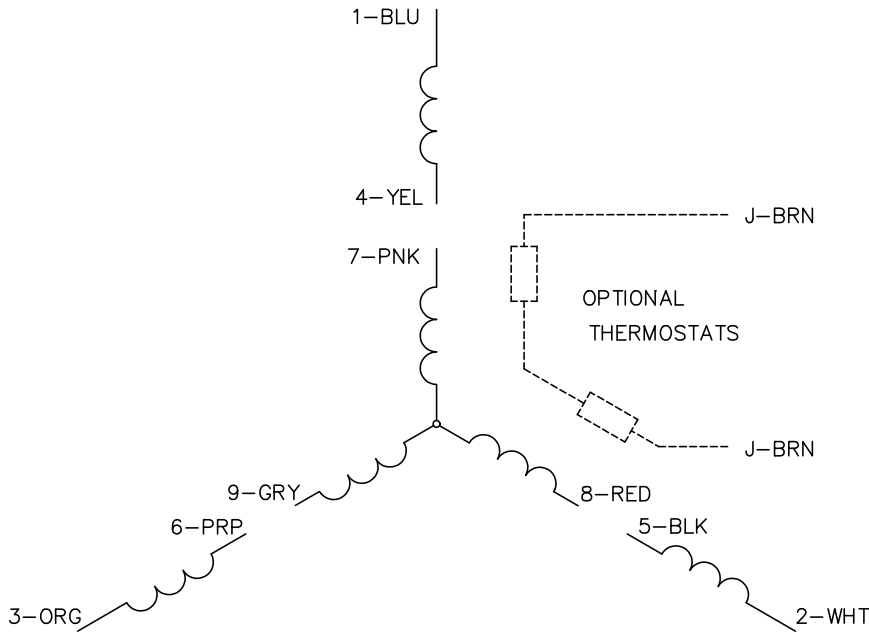
TORQUES (LB-FT): PO=12.31 PU=7.45 LR=8.55 LRA=13.12



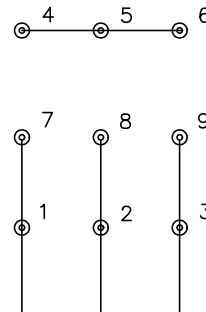
5/28/2023 ACPERF, record # 86932



CD0005

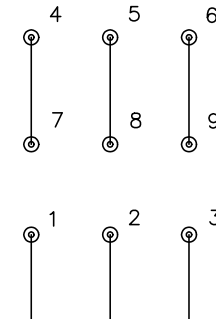


LOW VOLTAGE
(2Y)



LINE

HIGH VOLTAGE
(1Y)



LINE

NOTES:

1. INTERCHANGE ANY TWO LINE LEADS TO REVERSE ROTATION.
2. OPTIONAL THERMOSTATS ARE PROVIDED WHEN SPECIFIED.
3. ACTUAL NUMBER OF INTERNAL PARALLEL CIRCUITS MAY BE A MULTIPLE OF THOSE SHOWN ABOVE.
4. LEAD COLORS ARE OPTIONAL. LEADS MUST ALWAYS BE NUMBERED AS SHOWN.

CD0005

REV. DESC: REVISE TO SHOW OPTIONAL COLORS			
REV. LTR: E	BY: JLP	REVISED: 01/19/99 10:15	TDR: 0171435
S00000		FILE: AAA00005140	MDL: -
		MTL: -	

BALDOR ELECTRIC Co.

3PH, DV, 9 LEADS