

BALDOR® • RELIANCE

Product Information Packet

HDS100-0206ARKNN

HDS100-0206ARKNN,RES,KEY,230V

Specs			
Bearing Grease Type:	Polyrex EM		
Dimensional Drawing Numbers:	HD100LYA001		
Nameplate Amps:	3.2		

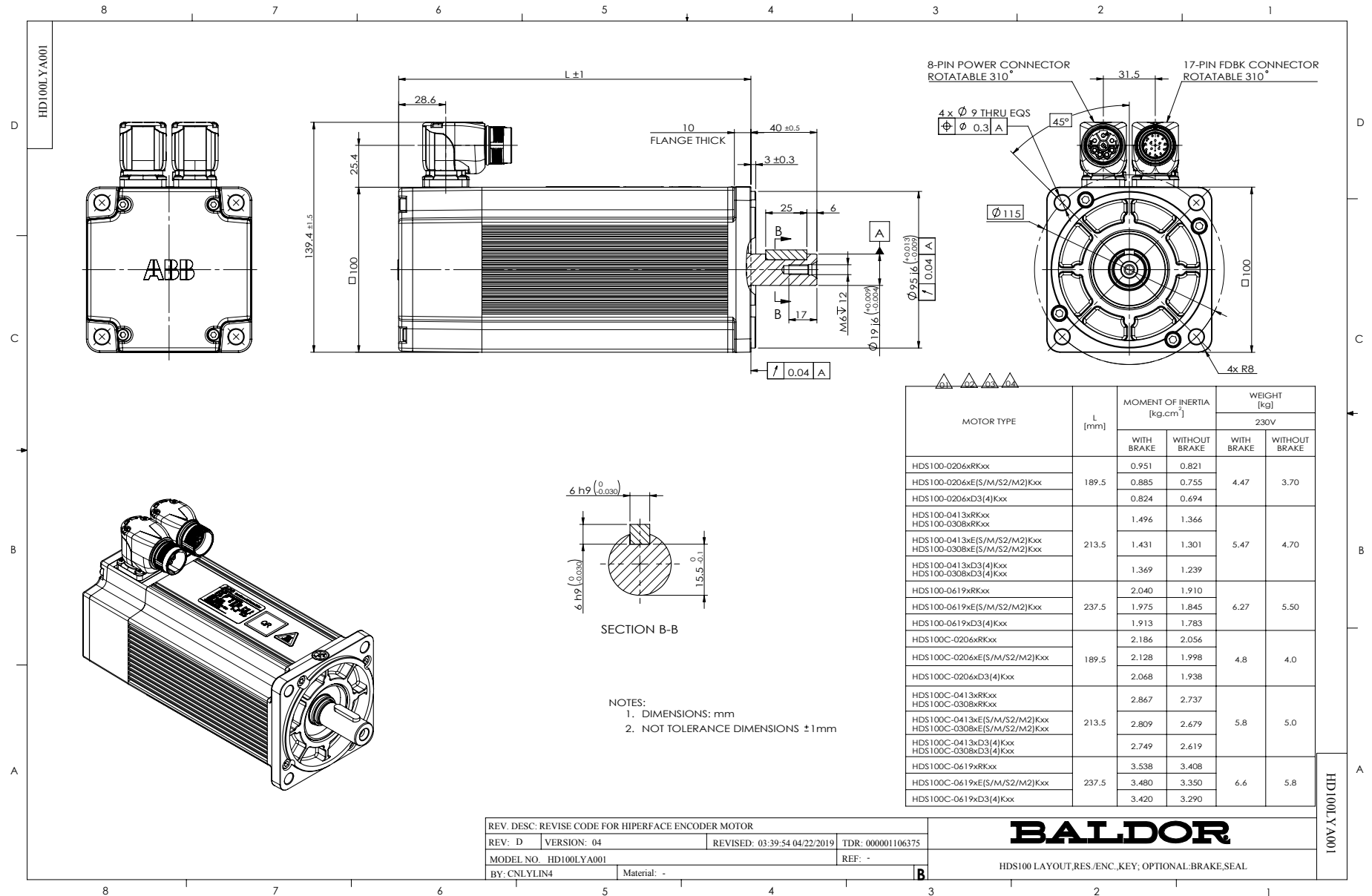
Nameplate LB1577T01

MODEL:	HDS100-0206ARKNN							
PN	0.6	KW		TO	2.0	N.M	IO 3.2	A
U	230	V		TP	6.0	N.M	IP 11.0	A
NN/N MAX	3000/4000			RPM			3XPTC130	
FBK	RES			IP	IP54		INS F	
BRK:		VDC/				N.M		
S/N								

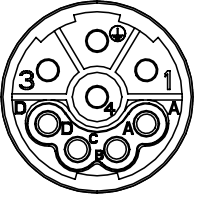
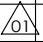
Parts List		
Part Number	Description	Quantity
HD100SA0001A22	STAROR ASSEMBLYHDS100, 22MM STACK,230V	1.000 EA
HD100SH0001A22	SHAFT,ROTOR L22MM, HDS100, RESOLVER	1.000 EA
HD100RA1000A22	ROTOR ASSEMBLY (W/O SHAFT),HDS100,SL=22M	1.000 EA
HW5010C15	CIRCLIPS FOR SHAFT-TYPE A,15,GB/T894.1	1.000 EA
HD100EP3100A01	END PLATE,REAR,MACHINED,HDS100,RESOLVER/	1.000 EA
HW5100D35	SPRING WASHER,JB/T7590-D35-H CLASS	1.000 EA
BG6202C02	DEEP GROOVE BALL BEARING,6202-2Z/C3,-30C	1.000 EA
84YN0050J045C	HEX SOCKET HEAD CAP SCREW,M5X45,GB/T70.1	4.000 EA
MJ5004A05CN	#242-21 LOCITE GENERAL PURPOSE MED. STR	0.300 ML
HW5010C20	CIRCLIPS FOR SHAFT-TYPE A,20MM,GB/T 894.	1.000 EA
HD100RF0001R01	SUB-ASSY:RESOLVER,HDS100	1.000 EA
LD2200A60	GRND LEAD ASSY,8" 18AWG,GRN/YEL,M4 RING	1.000 EA
09YN0040A008	SCREW ASSEMBLY,CROSS RECESSED PAN HEAD,S	1.000 EA
HD100CB0001A01	END COVER,FRONT,HDS100,MACHINING	1.000 EA
84YN0040J012	SCREW SOCKET HD M4 X 0.7 X 12MM	4.000 EA
WD1456A04	CONNECTOR,POWER,M23,8 PIN,MALE,PHOENIX C	1.000 EA
WD1456A04A01	CRIMP CONTACT,2MM,PHOENIX,SF-20KP004,FOR	4.000 EA
WD1456A04A02	CRIMP CONTACT,1MM,PHOENIX,SF-6CP2000,FOR	2.000 EA
WD1456A06	CONNECTOR,SIGNAL,M23,17 PIN,MALE,PHOENIX	1.000 EA
15YN0030A008	ROUND HEAD, CROSS RECESS SCREW,M3X8,ZINC	8.000 EA
HA71A0A02	DUST COVER, FOR HDS100 DEP	1.000 EA
HW2512E109	KEY, 6 X 6 X 25MM ROUND ENDED	1.000 EA
LB1577T01	NAMEPLATE,HDS PROTOTYPE	1.000 EA
LB1578	HOT WARING MARK	1.000 EA

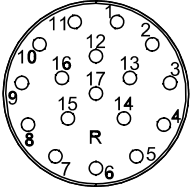
Parts List (continued)		
Part Number	Description	Quantity
LB1579	NO KNOCKING MARK	1.000 EA
LB1580	QR LABEL, HDS	1.000 EA
HA21A8Y80	SHAFT PROTECT SLEEVE FOR HDS100,Y80	1.000 EA
HDS100PA0206	MOTOR PACKING GROUP, HDS100-0206	1.000 EA

No performance data has been
assigned to this product.



CD2167A09

MOTOR & BRAKE & PTC LEADS			
 WD1456A04 (PLUG SIDE)	PIN	FUNCTION	COLOR
	1	U (R)	BLACK
	2	GROUND (PE)	YELLOW/GREEN
	3	W (T)	BLUE
	4	V (S)	RED
	A	PTC 	BLUE BLACK
	B	PTC	BLUE
	C	BRAKE	RED
	D	BRAKE	BLUE

RESOLVER LEADS			
 WD1456A06 (PLUG SIDE)	PIN	FUNCTION	COLOR
	1	R1 (REF+)	RED/WHITE
	2	R2 (REF-)	YELLOW/WHITE
	3	S1 (COS+)	RED
	4	S3 (COS-)	BLACK
	5	S4 (SIN-)	BLUE
	6	S2 (SIN+)	YELLOW
	7~17	-	-

REV. DESC: CORRECTED PTC THERMISTER LEAD COLOR			
REV: A	VERSION: 01	REVISED: 09:37:00 06/23/2017	TDR: 000001025915
60V17DC CD2167A09	MODEL NO. CD2167A09		REF: -
	BY: CNSESU2	Material: -	

BALDOR

CONNECTION DIAGRAM, POWER & RESOLVER

CD2167A09