

BALDOR • RELIANCE

Customer information packet

IDCSWDM3546T

1HP, 1770RPM, 3PH, 60HZ, 143TC, 3522M, TENV, F1

Class - None

Division - Not Applicable

Specifications

| | |
|--------------------------------|---|
| Enclosure | TENV |
| Frame | 143TC |
| Frame Material | Stainless Steel |
| Frequency | 60.00 Hz |
| Haz Area Class and Group | None |
| Haz Area Division | Not Applicable |
| Motor Letter Type | Three Phase |
| Output @ Frequency | 1.000 HP @ 60 HZ |
| Phase | 3 |
| Synchronous Speed @ Frequency | 1800 RPM @ 60 HZ |
| Voltage @ Frequency | 230.0 V @ 60 HZ 460.0 V @ 60 HZ |
| Agency Approvals | CSA UR |
| Ambient Temperature | 40 °C |
| Auxillary Box | No Auxillary Box |
| Auxillary Box Lead Termination | None |
| Base Indicator | Rigid |
| Bearing Grease Type | Polyrex EM (-20F +300F) |
| Blower | None |
| Current @ Voltage | 1.670 A @ 460.0 V 3.300 A @ 208.0 V 3.340 A @ 230.0 V |
| Design Code | B |
| Drip Cover | No Drip Cover |
| Duty Rating | CONT |
| Efficiency @ 100% Load | 85.5 % |
| Electrically Isolated Bearing | Not Electrically Isolated |
| Feedback Device | NO FEEDBACK |
| Front Shaft Indicator | None |
| Heater Indicator | No Heater |
| High Voltage Full Load Amps | 1.7 a |

Part detail

| | |
|--------------|------------|
| Revision | A |
| Type | AC |
| Mech. spec. | 35SS597 |
| Base | |
| Status | PRD/A |
| Elec. spec. | 35WGZ818 |
| Layout | 35LYSS597 |
| Eff. date | 05-16-2022 |
| CD Diagram | CD0005 |
| Poles | 04 |
| Leads | 9#18 |
| Proprietary | False |
| Created date | 01-10-2022 |

| | |
|--------------------------------------|----------------------------|
| Insulation Class | H |
| Inverter Code | Inverter Ready |
| KVA Code | M |
| Lifting Lugs | No Lifting Lugs |
| Locked Bearing Indicator | Locked Bearing |
| Max Speed | 2700 rpm |
| Motor Lead Quantity/Wire Size | 9 @ 18 AWG |
| Motor Lead Termination | Flying Leads |
| Motor Standards | NEMA |
| Motor Type | 3522M |
| Mounting Arrangement | F1 |
| Number of Poles | 4 |
| Overall Length | 12.12 IN |
| Power Factor | 66 |
| Product Family | Wash Down Paint Free |
| Pulley End Bearing Type | Sealed Bearing |
| Pulley Face Code | C-Face |
| Pulley Shaft Indicator | Standard |
| Rodent Screen | None |
| Service Factor | 1.00 |
| Shaft Diameter | 0.875 IN |
| Shaft Ground Indicator | No Shaft Grounding |
| Shaft Rotation | Reversible |
| Shaft Slinger Indicator | No Slinger |
| Speed | 1770 rpm |
| Speed Code | Single Speed |
| Starting Method | Direct on line |
| Thermal Device - Bearing | None |
| Thermal Device - Winding | Normally Closed Thermostat |
| Vibration Sensor Indicator | No Vibration Sensor |
| Winding Thermal 1 | None |
| Winding Thermal 2 | None |

Nameplate

| NP1608L | | | | | |
|---------------------|---------------|----------------|-----------|--------------|---|
| CAT NO | IDCSWDM3546T | | | | |
| SPEC. | 35SS597Z818G1 | | | | |
| FRAME | 143TC | HP | 1 TE | | |
| VOLTS | 230/460 | | | | |
| MAG CUR | 2.5/1.25 | FLA | 3.34/1.67 | | |
| RPM | 1770 | RPM MAX | 2700 | | |
| HZ | 60 | PH | 3 | CLASS | H |
| SER.F. | 1.00 | DES | B | SL HZ | 1 |
| NEMA-NOM-EFF | 85.5 | WK2 | 0.159 | | |
| BLWR V | PH | HZ | A | | |
| RATING | 40C AMB-CONT | | | | |
| DE BRG | 6205 | ODE BRG | 6203 | | |
| CC | 010A | SN | | | |

Parts list

| Part number | Description | Quantity |
|--------------|---|----------|
| SA402521 | SA 35SS597Z818G1 | 1.000 ea |
| RA393798 | RA 35SS597Z818G1 | 1.000 ea |
| NS2512A01 | INSULATOR, CONDUIT BOX X | 1.000 ea |
| 35CB5001A21 | CONDUIT BOX KIT, FOR SUPER II WASHDOWN | 1.000 ea |
| 11XW1032G06 | 10-32 X .38, TAPTITE II, HEX WSHR SLTD U | 1.000 ea |
| 35EP3122D00U | MASTER ODE,203 BRG, .125NPT DRNS(BALL BUR | 1.000 ea |
| HW4500S33 | 1/8 NPT STAINLESS #304 SS PLUG | 3.000 ea |
| HW5100A03 | WAVY WASHER (W1543-017) | 1.000 ea |
| 35EP3307E00U | MASTER DE,205 BRG,1.623SH, .125NPT DRNS,C | 1.000 ea |
| HW4500S33 | 1/8 NPT STAINLESS #304 SS PLUG | 3.000 ea |
| HW4606A02 | JM CLIPPER/SEAL (LWE-0938-1624-AL23) | 1.000 ea |
| 12XN1032S20 | 10-32 X 1-1/4 HEX M.S. , STAINLESS STEEL | 2.000 ea |
| HA1049A01 | DUBO LOK WASHER SIZE 10 (NYLON LOCK SEAL | 2.000 ea |
| HA1049A01 | DUBO LOK WASHER SIZE 10 (NYLON LOCK SEAL | 4.000 ea |
| HW2502D13 | SS KEY, 3/16 SQ X 1.375 | 1.000 ea |
| HA7000A01 | KEY RETAINER 7/8" DIA SHAFT | 1.000 ea |
| MJ5001A02 | 732 CL SEALANT 3 OZ DIXIE BEARING 289100 | 0.001 ea |
| 85XU0407S04 | 4X1/4 U DRIVE PIN STAINLESS | 2.000 ea |
| LB1164 | LABEL,WARNING AND DRAIN | 1.000 ea |
| HA5027A02 | HA4054 T-DRAIN X2 BAGGED WITH LABEL | 1.000 ea |
| MJ1000A02 | GREASE, POLYREX EM EXXON | 0.050 lb |
| HA3100S24 | THRUBOLT 8.625 LENGTH 1.250 TH LENGTH SS | 4.000 ea |
| LC0145B01 | CONNECTION LABEL | 1.000 ea |
| NP1608L | SS WD INV UL CSA CC REV MTG | 1.000 ea |
| 35PA1066 | PKG GRP, PRINT PK1008A06 | 1.000 ea |
| PK3082 | STYROFOAM CRADLE | 1.000 ea |
| MN416A01 | TAG-INSTAL-MAINT no wire (2100bx)4/22 | 1.000 ea |
| FE-0000001 | ZRTG FE ASSEMBLY | 1.000 ea |
| PE-0000001 | ZRTG PE ASSEMBLY | 1.000 ea |

AC Induction Motor Performance Data

Record # 89787

Typical performance - not guaranteed values

| Winding: 35WGZ818-R005 | | Type: 3522M | | Enclosure: TENV | |
|-------------------------------|--------------------------|----------------------------|--|--------------------------|--|
| Nameplate Data | | | 460 V, 60 Hz: High Voltage Connection | | |
| Rated Output (HP) | 1 | Full Load Torque | 2.99 LB-FT | | |
| Volts | 230/460 | Start Configuration | direct on line | | |
| Full Load Amps | 3.34/1.67 | Breakdown Torque | 16.6 LB-FT | | |
| R.P.M. | 1770 | Pull-up Torque | 7.42 LB-FT | | |
| Hz | 60 Phase | 3 | Locked-rotor Torque | 10.32 LB-FT | |
| NEMA Design Code | B KVA Code | M | Starting Current | 16.1 A | |
| Service Factor (S.F.) | | 1 | No-load Current | 1.23 A | |
| NEMA Nom. Eff. | 85.5 Power Factor | 66 | Line-line Res. @ 25°C | 14.4 Ω | |
| Rating - Duty | 40C AMB-CONT | | Temp. Rise @ Rated Load | 63°C | |
| | | | Locked-rotor Power Factor | 59.3666 | |
| | | | Rotor inertia | 0.159 lb-ft ² | |

Load Characteristics 460 V, 60 Hz, 1 HP

| % of Rated Load | 25 | 50 | 75 | 100 | 125 | 150 |
|------------------------|-----------|-----------|-----------|------------|------------|------------|
| Power Factor | 27 | 43 | 56 | 66 | 73 | 78 |
| Efficiency | 70.8 | 81.2 | 84.5 | 85.9 | 85.8 | 85.2 |
| Speed | 1793 | 1786 | 1781 | 1773 | 1766 | 1758 |
| Line amperes | 1.25 | 1.34 | 1.49 | 1.67 | 1.87 | 2.12 |

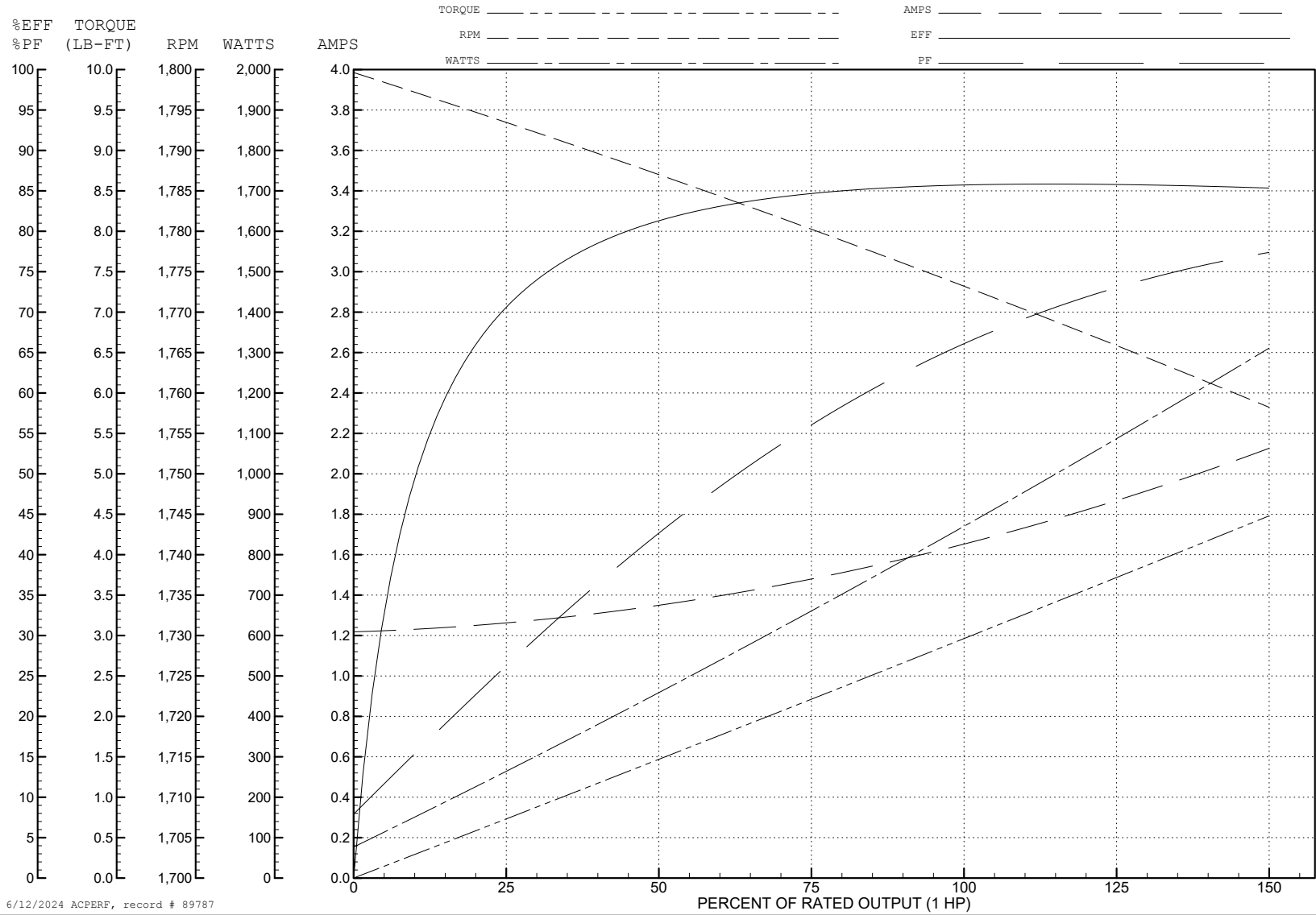
ABB Motors and Mechanical Inc.

WINDING # 35WGZ818

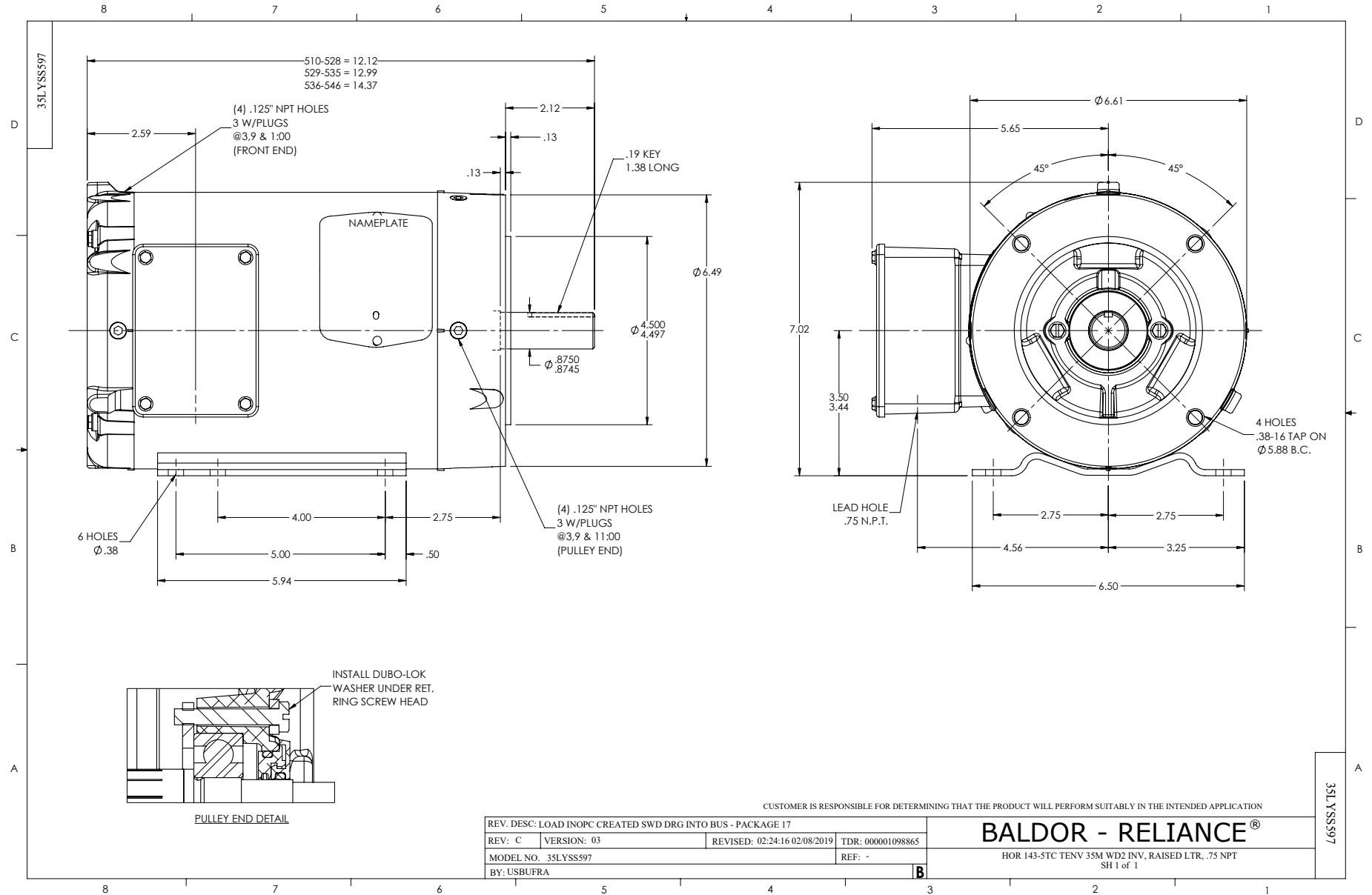
Typical performance - not guaranteed values.

1 HP 3 PH 60 HZ 1770 RPM 460 V 3522M

TORQUES (LB-FT): PO=16.6 PU=7.42 LR=10.32 LRA=16.1



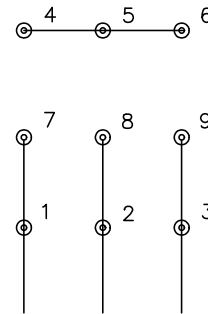
6/12/2024 ACPERF, record # 89787



CD0005

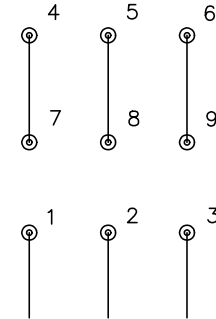


LOW VOLTAGE
(2Y)



LINE

HIGH VOLTAGE
(1Y)



LINE

NOTES:

1. INTERCHANGE ANY TWO LINE LEADS TO REVERSE ROTATION.
2. OPTIONAL THERMOSTATS ARE PROVIDED WHEN SPECIFIED.
3. ACTUAL NUMBER OF INTERNAL PARALLEL CIRCUITS MAY BE A MULTIPLE OF THOSE SHOWN ABOVE.
4. LEAD COLORS ARE OPTIONAL. LEADS MUST ALWAYS BE NUMBERED AS SHOWN.

CD0005

| | | | |
|---|---------|-------------------------|--------------|
| REV. DESC: REVISE TO SHOW OPTIONAL COLORS | | | |
| REV. LTR: E | BY: JLP | REVISED: 01/19/99 10:15 | TDR: 0171435 |
| S00000 | | FILE: AAA00005140 | MDL: - |
| | | MTL: - | |

BALDOR ELECTRIC Co.

3PH, DV, 9 LEADS