



Customer information packet

IDVSWDM3611T

3HP, 1760RPM, 3PH, 60HZ, 182TC, 3636M, TEFC, F1

Class - None

Division - Not Applicable

Specifications

Enclosure	TEFC
Frame	182TC
Frame Material	Stainless Steel
Frequency	60.00 Hz
Motor Letter Type	Three Phase
Output @ Frequency	3.000 HP @ 60 HZ
Phase	3
Synchronous Speed @ Frequency	1800 RPM @ 60 HZ
Voltage @ Frequency	230.0 V @ 60 HZ 460.0 V @ 60 HZ
XP Class and Group	None
XP Division	Not Applicable
Agency Approvals	CSA UR
Ambient Temperature	40 °C
Auxillary Box	No Auxillary Box
Auxillary Box Lead Termination	None
Base Indicator	No Mounting
Bearing Grease Type	Polyrex EM (-20F +300F)
Blower	None
Current @ Voltage	8.800 A @ 208.0 V 8.400 A @ 230.0 V 4.200 A @ 460.0 V
Design Code	B
Drip Cover	No Drip Cover
Duty Rating	CONT
Efficiency @ 100% Load	89.5 %
Electrically Isolated Bearing	Not Electrically Isolated
Feedback Device	NO FEEDBACK
Front Face Code	Standard
Front Shaft Indicator	None
Heater Indicator	No Heater

Part detail

Revision	Q
Type	AC
Mech. spec.	36K606
Base	
Status	PRD/A
Elec. spec.	36WGS945
Layout	36LYK606
Eff. date	08-23-2023
CD Diagram	CD0005
Poles	04
Leads	9#16
Proprietary	False
Created date	07-13-2012

High Voltage Full Load Amps	4.2 a
Insulation Class	H
Inverter Code	Inverter Ready
KVA Code	K
Lifting Lugs	No Lifting Lugs
Locked Bearing Indicator	Locked Bearing
Max Speed	6000 rpm
Motor Lead Exit	Ko Box
Motor Lead Quantity/Wire Size	9 @ 16 AWG
Motor Lead Termination	Flying Leads
Motor Standards	NEMA
Motor Type	3636M
Mounting Arrangement	F1
Number of Poles	4
Overall Length	18.06 IN
Power Factor	76
Product Family	Wash Down Paint Free
Pulley End Bearing Type	Ball
Pulley Face Code	C-Face
Pulley Shaft Indicator	Standard
Rodent Screen	None
Service Factor	1.00
Shaft Diameter	1.125 IN
Shaft Extension Location	Pulley End
Shaft Ground Indicator	No Shaft Grounding
Shaft Rotation	Reversible
Shaft Slinger Indicator	Shaft Slinger
Speed	1760 rpm
Speed Code	Single Speed
Starting Method	Direct on line
Thermal Device - Bearing	None
Thermal Device - Winding	Normally Closed Thermostat
Vibration Sensor Indicator	No Vibration Sensor
Winding Thermal 1	None

Winding Thermal 2

None

Nameplate

NP3956L			
CAT.NO.	IDVSWDM3611T		
SPEC.	36K606S945G1		
FRAME	182TC	H.P.	3 TE
VOLTS	230/460		
MAG. CUR.	4.6/2.3	F.L. AMPS	8.4/4.2
R.P.M.	1760	R.P.M. MAX	6000
HZ.	60	PH.	3 CLASS H
SER.F.	1.00	DES.	B SL HZ 1.3
NEMA NOM. EFF.	89.5	WK2	0.372
BLWR V	PH	HZ	AMPS
RATING	40C AMB-CONT		
DE BRG	6206	ODE BRG	6205
CC	010A SN		

Parts list

Part number	Description	Quantity
SA247872	SA 36K606S945G1	1.000 ea
RA234742	RA 36K606S945G1	1.000 ea
36FN3000C01SP	EXFN, PLASTIC, 5.25 OD, .912 ID	1.000 ea
36CB2000A06MU	CONDUIT BOX, MACH W/.75 NPT, BALL BURNIS	1.000 ea
37GS3011	1/8"WHITE NEOPRENE BOX GS	1.000 ea
10XN1032S08	10-32X1/2 HEX HEAD S STL	2.000 ea
HA5027A04	HA4054 T-DRAIN X2 BAGGED	1.000 ea
HW1000A10	#10 FLAT WASHER (SAE)	2.000 ea
11XW1032G06	10-32 X .38, TAPTITE II, HEX WSHR SLTD U	1.000 ea
HW3001B02	BRASS CUP WASHER W/GROUND SYMBOL TAB,	1.000 ea
36EP3101B27MU	FR EP,205 BRG-ENCL, (FOR S.P. #9D)	1.000 ea
HW4500S33	1/8 NPT STAINLESS #304 SS PLUG	3.000 ea
HW5100A05	WVY WSHR F/205 & 304 BRGS	1.000 ea
36EP3301A32MU	PU EP,182-4TC 206 BRG OIL SEAL NO GSR-BA	1.000 ea
HW4500S33	1/8 NPT STAINLESS #304 SS PLUG	3.000 ea
HW4606A03	JM CLIPPER/SEAL (LWE-1156-1875-AL44)	1.000 ea
10XN2520S28	1/4-20X 1 3/4 HEX HD SS X	4.000 ea
HA1049A02	DUBO LOK WASHER SIZE 1/4 (NYLON LOCK SEA	4.000 ea
HA1049A02	DUBO LOK WASHER SIZE 1/4 (NYLON LOCK SEA	4.000 ea
51XB1214A16	12-14X1.00 HXWSSLD SERTYB	1.000 ea
36FH4011	WASHDOWN FAN COVER #304 STAINLESS W/NOTC	1.000 ea
11XB1016S07	10-16X7/16HX WS SLD TYP BTDR 13817	3.000 ea
36CB4517	LIPPED CB LID #304 STAINLESS - CLEANED	1.000 ea
37GS3010SP	1/16"WHITE LID GASKET	1.000 ea
59XW0832S07	TAPTITE II,HEX WSHR UNSLTD SER,410 S.S.,	4.000 ea
HW1003S08	WASHER, #8 EX TH LK, SS	4.000 ea
HW4600B32SP	V-RING SLINGER 1.000 X 1.540 X .24 VITON	1.000 ea
HW2502E16	#303 SS,SQ KEY 1/4 X 1.750	1.000 ea
HA7000A02	KEY RETAINER RING, 1 1/8 DIA, 1 3/8 DIA	1.000 ea
MJ5001A02	732 CL SEALANT 3 OZ DIXIE BEARING 289100	0.001 ea
LB1164	LABEL,WARNING AND DRAIN	1.000 ea

85XU0407S04	4X1/4 U DRIVE PIN STAINLESS	2.000 ea
HW3200S01	EYEBOLT 3/8-16 X3/4 S.S. TDR #35988	1.000 ea
MJ1000A02	GREASE, POLYREX EM EXXON	0.050 lb
HA3101S40	THRUBOLT 1/4-20 X 12.687	4.000 ea
LC0145B01	CONNECTION LABEL	1.000 ea
NP3956L	SS WD INV UL CSA-EEV PREM CC REV MTG	1.000 ea
36PA1001	PKG GRP, PRINT PK1017A06	1.000 ea
PK3082	STYROFOAM CRADLE	1.000 ea
MN416A01	TAG-INSTAL-MAINT no wire (2100bx)4/22	1.000 ea
LB1624	COMBINED WARNING LABEL, ISO/ANSI PICTOGR	1.000 ea

AC Induction Motor Performance Data

Record # 39148

Typical performance - not guaranteed values

Winding: 36WGS945-R002		Type: 3636M	Enclosure: TEFC	
Nameplate Data			460 V, 60 Hz: High Voltage Connection	
Rated Output (HP)	3	Full Load Torque	9.04 LB-FT	
Volts	230/460	Start Configuration	direct on line	
Full Load Amps	8.4/4.2	Breakdown Torque	34.81 LB-FT	
R.P.M.	1760	Pull-up Torque	18.62 LB-FT	
Hz	60 Phase	Locked-rotor Torque	21.9 LB-FT	
NEMA Design Code	B KVA Code	Starting Current	34.1 A	
Service Factor (S.F.)	1	No-load Current	2.25 A	
NEMA Nom. Eff.	89.5 Power Factor	Line-line Res. @ 25°C	3.58 Ω	
Rating - Duty	40C AMB-CONT	Temp. Rise @ Rated Load	62°C	
		Locked-rotor Power Factor	41	
		Rotor inertia	0.335 LB-FT ²	

Load Characteristics 460 V, 60 Hz, 3 HP

% of Rated Load	25	50	75	100	125	150
Power Factor	36	56	69	76	80	83
Efficiency	82.2	88.1	89.7	89.8	89.2	88.3
Speed	1790	1781	1772	1762	1751	1738
Line amperes	2.45	2.86	3.46	4.17	4.95	5.83

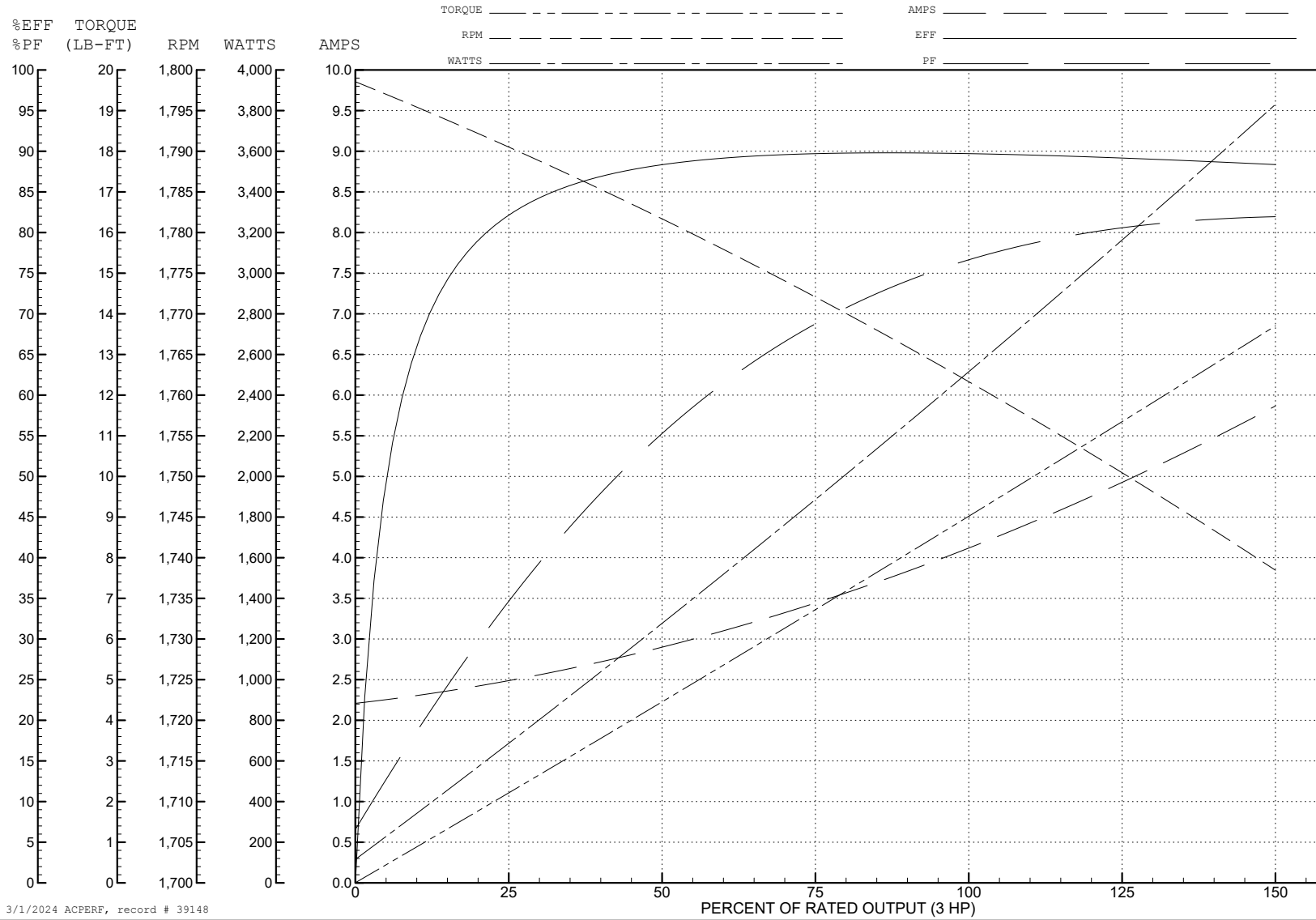
ABB Motors and Mechanical Inc.

WINDING # 36WGS945

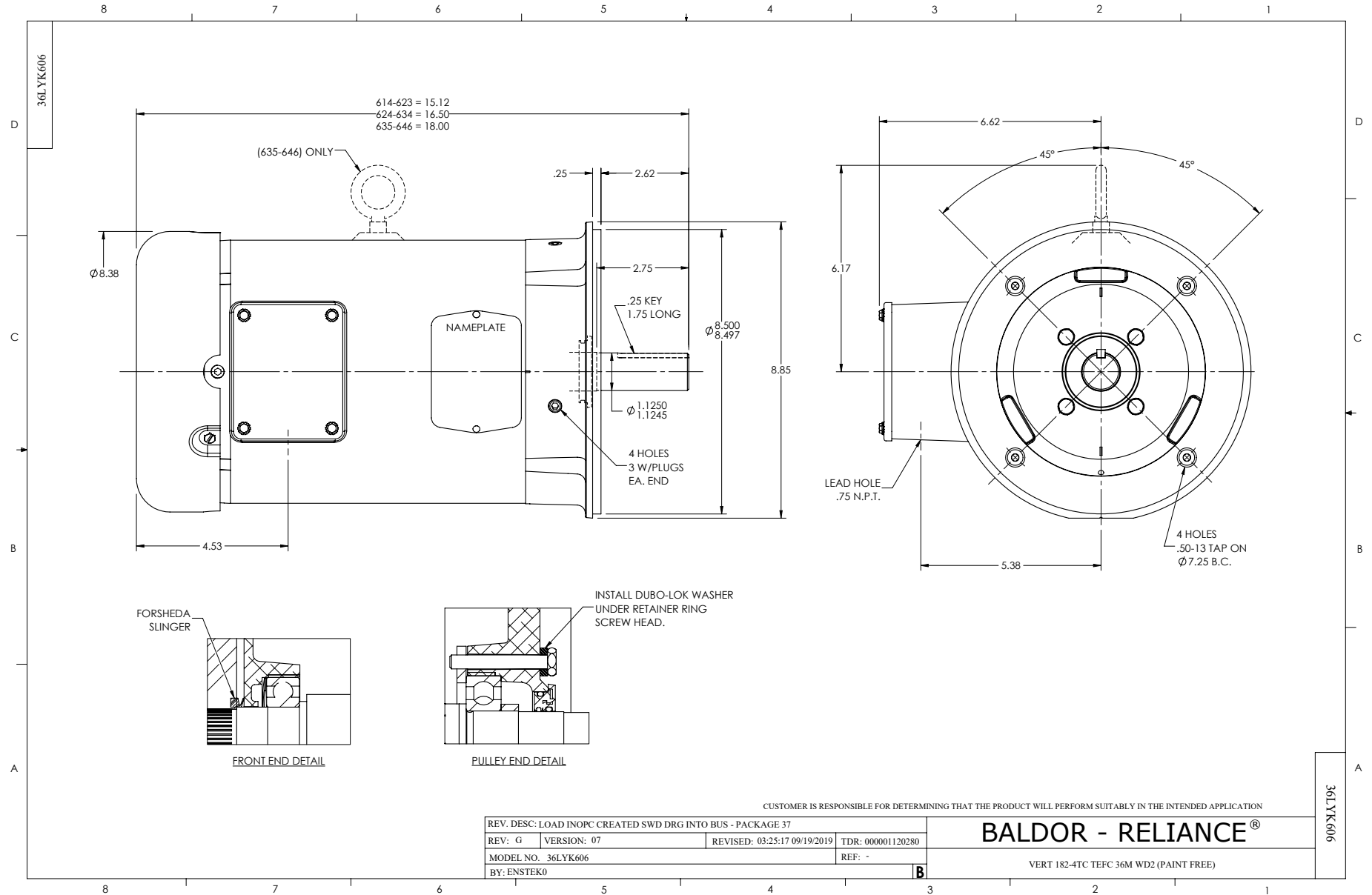
3 HP 3 PH 60 HZ 1760 RPM 460 V 3636M

Typical performance - not guaranteed values.

TORQUES (LB-FT): PO=34.81 PU=18.62 LR=21.9 LRA=34.1



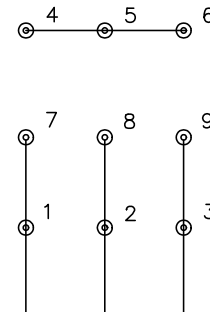
3/1/2024 ACPERF, record # 39148



CD0005



LOW VOLTAGE
(2Y)



LINE

HIGH VOLTAGE
(1Y)



LINE

NOTES:

1. INTERCHANGE ANY TWO LINE LEADS TO REVERSE ROTATION.
2. OPTIONAL THERMOSTATS ARE PROVIDED WHEN SPECIFIED.
3. ACTUAL NUMBER OF INTERNAL PARALLEL CIRCUITS MAY BE A MULTIPLE OF THOSE SHOWN ABOVE.
4. LEAD COLORS ARE OPTIONAL. LEADS MUST ALWAYS BE NUMBERED AS SHOWN.

REV. DESC: REVISE TO SHOW OPTIONAL COLORS			
REV. LTR: E	BY: JLP	REVISED: 01/19/99 10:15	TDR: 0171435
S00000		FILE: AAA00005140	MDL: -
		MTL: -	

BALDOR ELECTRIC Co.

3PH, DV, 9 LEADS

CD0005