

BALDOR • RELIANCE

Customer information packet

IDWNM22938T

10HP, 1765RPM, 3PH, 60HZ, 254TC, 3956M, TENV

Class -

Division - Not Applicable

Specifications

Enclosure	TENV
Frame	254TC
Frame Material	Steel
Frequency	60.00 Hz
Motor Letter Type	Three Phase
Output @ Frequency	10.000 HP @ 60 HZ
Phase	3
Synchronous Speed @ Frequency	1800 RPM @ 60 HZ
Voltage @ Frequency	460.0 V @ 60 HZ 230.0 V @ 60 HZ
XP Division	Not Applicable
Agency Approvals	CSA UR
Ambient Temperature	40 °C
Auxillary Box	No Auxillary Box
Auxillary Box Lead Termination	None
Base Indicator	Rigid
Bearing Grease Type	Polyrex EM (-20F +300F)
Blower	None
Current @ Voltage	12.000 A @ 460.0 V 24.000 A @ 230.0 V
Design Code	B
Drip Cover	No Drip Cover
Duty Rating	CONT
Efficiency @ 100% Load	91.7 %
Electrically Isolated Bearing	Not Electrically Isolated
Feedback Device	NO FEEDBACK
Front Face Code	Encoder/Feedback Device
Front Shaft Indicator	None
Heater Indicator	No Heater
High Voltage Full Load Amps	12.0 a
Insulation Class	H

Part detail

Revision	AN
Type	AC
Mech. spec.	39R099
Base	
Status	PRD/A
Elec. spec.	39WGW632
Layout	39LYR099
Eff. date	11-14-2023
CD Diagram	CD0005
Poles	04
Leads	9#12
Proprietary	False
Created date	01-01-0001

Inverter Code	Inverter Duty
KVA Code	H
Lifting Lugs	Standard Lifting Lugs
Locked Bearing Indicator	Locked Bearing
Max Speed	5000 rpm
Motor Lead Exit	Ko Box
Motor Lead Quantity/Wire Size	9 @ 12 AWG
Motor Lead Termination	Flying Leads
Motor Standards	NEMA
Motor Type	3956M
Mounting Arrangement	F1
Number of Poles	4
Overall Length	23.92 IN
Power Factor	85
Product Family	Wash Down
Pulley End Bearing Type	Sealed Bearing
Pulley Face Code	C-Face
Pulley Shaft Indicator	Standard
Rodent Screen	None
Service Factor	1.00
Shaft Diameter	1.625 IN
Shaft Extension Location	Pulley End
Shaft Ground Indicator	No Shaft Grounding
Shaft Rotation	Reversible
Shaft Slinger Indicator	Shaft Slinger
Speed	1765 rpm
Speed Code	Single Speed
Starting Method	Direct on line
Thermal Device - Bearing	None
Thermal Device - Winding	Normally Closed Thermostat
Vibration Sensor Indicator	No Vibration Sensor

Nameplate

NP1162L				
CAT NO	IDWNM22938T			
SPEC.	39R099W632G1			
FRAME	254TC	HP	10 TE	
VOLTS	230/460			
MAG CUR	8.8/4.4	FLA	24/12	
RPM	1765	RPM MAX	5000	
HZ	60	PH	3	CLASS H
SER.F.	1.00	DES	B	SL HZ 1.22
NEMA-NOM-EFF	91.7	WK2	2.44	
BLWR V	PH	HZ	A	
RATING	40C AMB-CONT			
DE BRG	6309	ODE BRG	6208	
CC	010A	SN		

Parts list

Part number	Description	Quantity
SA084730	SA 39R099W632G1	1.000 ea
RA077890	RA 39R099W632G1	1.000 ea
HA6016P	ADAPTER, CAST CONDUIT BOX EPOXY PRIMER	1.000 ea
09GS1006	GASKET, CONDUIT BOX, NEOP-1/16 THICK-BLA	1.000 ea
09CB3002A01P	CB MACH - 1.25 N.P.T. LEAD HOLE W/EPOXY	1.000 ea
19XW2520A16	SCREW,1/4-20X1 TAPTITE-II OR ROLOC 91	2.000 ea
HW1001A25	LOCKWASHER 1/4, ZINC PLT .493 OD, .255 I	2.000 ea
WD1000B16	T&B CX70TN OR L70P TERMINAL LUG	1.000 ea
59XW2520G07	.25-20X.44,HEX SER WSHR,TAPTITE 2,GREEN	1.000 ea
39EP1100A25P	FREP, MACH W/LIP SEAL, ENC & COVER MTG	1.000 ea
10XN2520S12	BOLT 1/4 - 20X 3/4 HEX HEAD SS (F/S)	1.000 ea
HW1001S25	WASHER, 1/4 SPLT LK, STAINLESS STEEL	1.000 ea
HW2502G25	#303 SS,SQ KEY 3/8 X 2.880	1.000 ea
HW4600A31	SEAL,NATIONAL #453065 SINGLE LIP DOUBLE	1.000 ea
MJ5001A27	32220KN GRAY SEALER *MIN BUY 4 QTS=1GAL	0.031 qt
HW5100A08	W3118-035 WVY WSHR (WB)	1.000 ea
10XN2520S28	1/4-20X 1 3/4 HEX HD SS X	4.000 ea
39EP1500A04P	PU ENDPLATE, MACH W/EPOXY PRIMER	1.000 ea
HW4600B53	SEAL 1.688 X 2.275 X 0.312 SINGLE LIP DB	1.000 ea
HW4600B44	V-RING SLINGER 1.500 X 1.810 X .28 VITON	1.000 ea
HA3154S02	THRUBOLT STUD 3/8-16 X 15.875 SS	4.000 ea
XY3816S12	3/8-16 HEX FINISHED NUT SS	8.000 ea
HA6881	BEI HS35 THRU SHAFT ENCODER PROTECTIVE C	1.000 ea
10XN3816S12	3/8-16 X 3/4 HEX HD CAP SCREW, STAINLE	3.000 ea
HW1001S38	WASHER, 3/8 SPLT LK, STAINLESS STEEL	3.000 ea
09CB3501P	CONDUIT BOX LID FOR 09CB3001 & 09CB3002	1.000 ea
12GS1002	GASKET, CONDUIT BOX LID, NEOP	1.000 ea
19XT2520S12	1/4-20X3/4 HWH NO SLOT TY.23 18-8 S.S.	2.000 ea
HW1001S25	WASHER, 1/4 SPLT LK, STAINLESS STEEL	2.000 ea
MJ5002A01	SILICON RUBBER SEALANT, 732CL 10.3 OZ TU	0.025 ea
HA5027A01	HA4066A01 T-DRAIN X2 BAGGED	1.000 ea

09GS1017	GASKET, CONDUIT BOX, .125 THICK BLACK NE	1.000 ea
HW4032A01	BLACK DRAIN PLUG FOR WASH DOWN MOTORS	3.000 ea
MJ1000A02	GREASE, POLYREX EM EXXON	0.030 lb
HW4032A01	BLACK DRAIN PLUG FOR WASH DOWN MOTORS	3.000 ea
MG1025W01	WILKOFAS, 781.01, SIGNAL WHITE #9003	0.050 ga
85XU0407S04	4X1/4 U DRIVE PIN STAINLESS	2.000 ea
LB1164	LABEL, WARNING AND DRAIN	1.000 ea
LC0145B01	CONNECTION LABEL	1.000 ea
LB1624	COMBINED WARNING LABEL, ISO/ANSI PICTOGR	1.000 ea
MN416A01	TAG-INSTAL-MAINT no wire (2100bx)4/22	1.000 ea
NP1162L	SS INV UL CSA CC	1.000 ea
40PA1000	PACKAGING GROUP	1.000 ea
LD7020D09	LEAD SET, 12AWG, 9 LEAD, 20" LONG LEADS	1.000 ea

AC Induction Motor Performance Data

Record # 12831

Typical performance - not guaranteed values

Winding: 39WGW632-R001		Type: 3956M		Enclosure: TENV	
Nameplate Data			460 V, 60 Hz: High Voltage Connection		
Rated Output (HP)	10	Full Load Torque	30 LB-FT		
Volts	230/460	Start Configuration	direct on line		
Full Load Amps	24/12	Breakdown Torque	114 LB-FT		
R.P.M.	1765	Pull-up Torque	41.5 LB-FT		
Hz	60 Phase	3	Locked-rotor Torque	58 LB-FT	
NEMA Design Code	B KVA Code	H	Starting Current	87 A	
Service Factor (S.F.)		1	No-load Current	4.4 A	
NEMA Nom. Eff.	91.7 Power Factor	85	Line-line Res. @ 25°C	0.744 Ω	
Rating - Duty	40C AMB-CONT		Temp. Rise @ Rated Load	89°C	
			Locked-rotor Power Factor	31.9	
			Rotor inertia	2.45 LB-FT ²	

Load Characteristics 460 V, 60 Hz, 10 HP

% of Rated Load	25	50	75	100	125	150
Power Factor	52	72	81	85	86	87
Efficiency	87.7	91.7	92.4	92	91.2	90.1
Speed	1791	1783	1774	1764	1753	1741
Line amperes	5.3	7.2	9.5	12	14.9	17.9

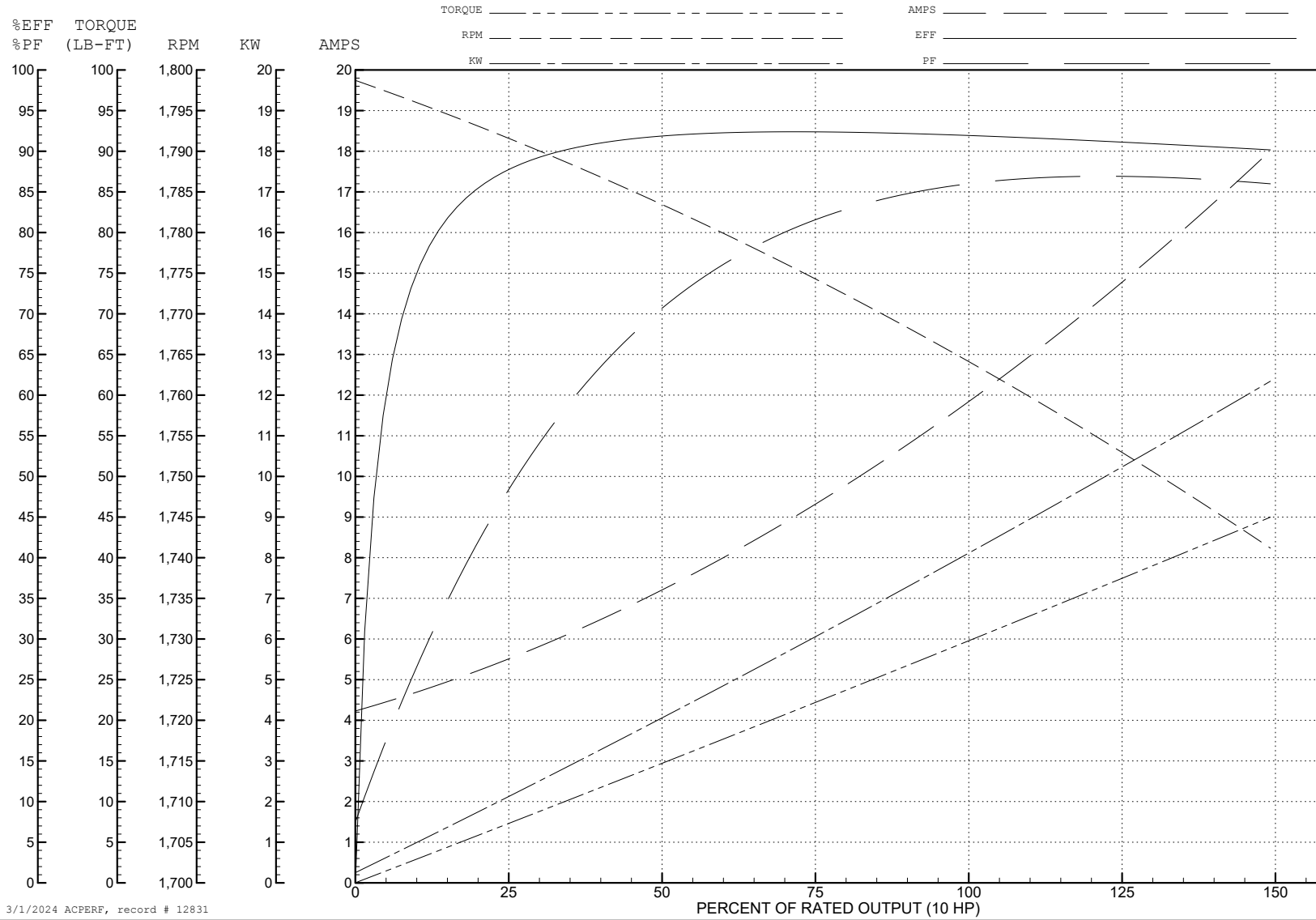
ABB Motors and Mechanical Inc.

WINDING # 39WGW632

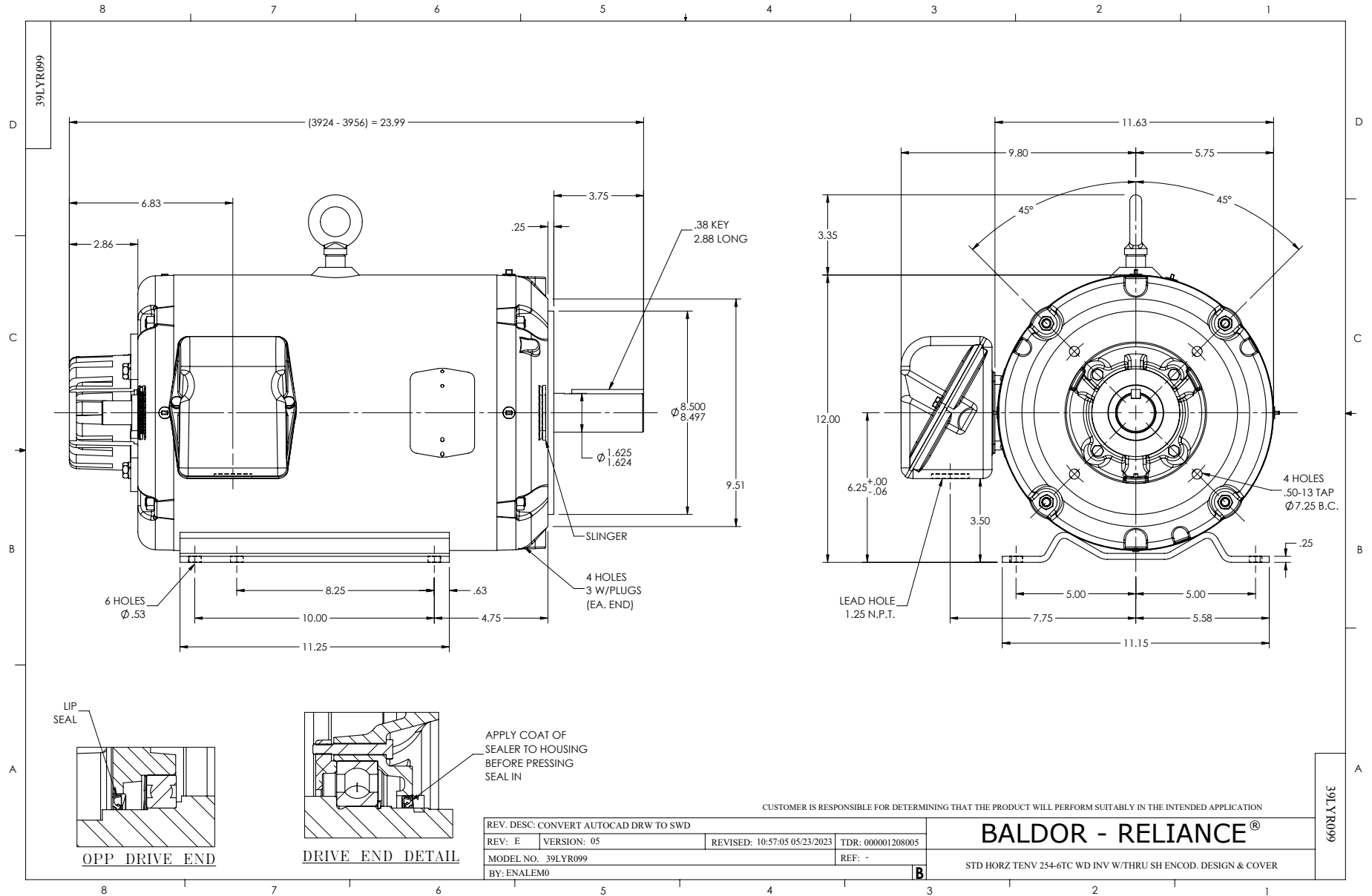
Typical performance - not guaranteed values.

10 HP 3 PH 60 HZ 1765 RPM 460 V 3956M

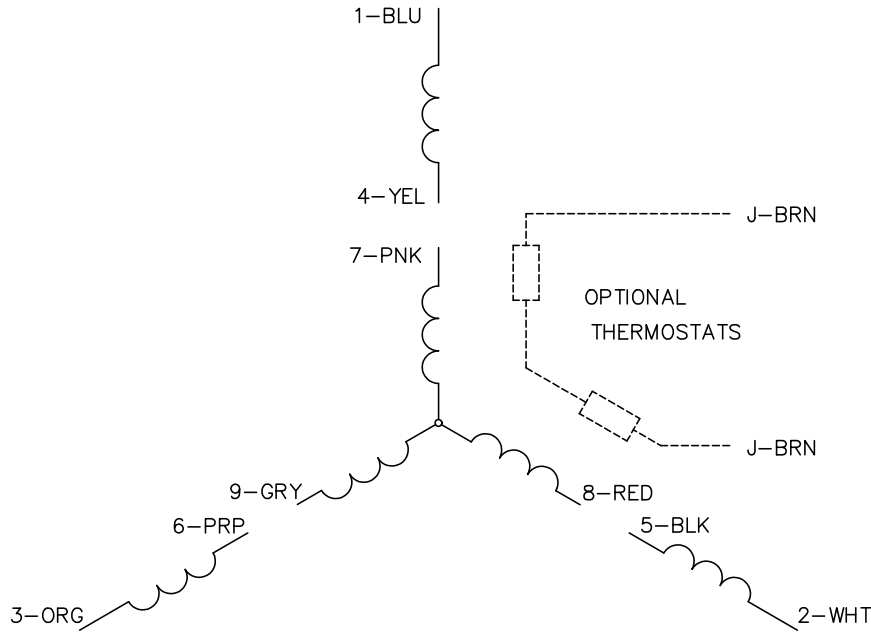
TORQUES (LB-FT): PO=114 PU=41.5 LR=58 LRA=87



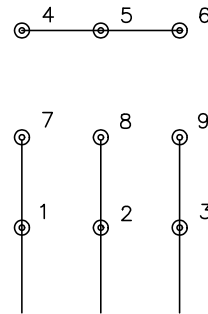
3/1/2024 ACPERF, record # 12831



CD0005

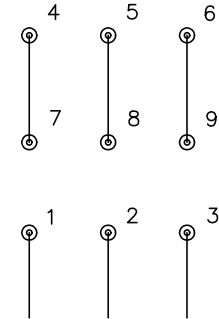


LOW VOLTAGE
(2Y)



LINE

HIGH VOLTAGE
(1Y)



LINE

NOTES:

1. INTERCHANGE ANY TWO LINE LEADS TO REVERSE ROTATION.
2. OPTIONAL THERMOSTATS ARE PROVIDED WHEN SPECIFIED.
3. ACTUAL NUMBER OF INTERNAL PARALLEL CIRCUITS MAY BE A MULTIPLE OF THOSE SHOWN ABOVE.
4. LEAD COLORS ARE OPTIONAL. LEADS MUST ALWAYS BE NUMBERED AS SHOWN.

CD0005

REV. DESC: REVISE TO SHOW OPTIONAL COLORS			
REV. LTR: E	BY: JLP	REVISED: 01/19/99 10:15	TDR: 0171435
S00000		FILE: AAA00005140	MDL: -
		MTL: -	

BALDOR ELECTRIC Co.

3PH, DV, 9 LEADS