



Customer information packet

IDWNM3611T

3HP, 1760RPM, 3PH, 60HZ, 184TC, 3640M, TENV, F1

Class - None

Division - Not Applicable

Specifications

| | |
|--------------------------------|--|
| Enclosure | TENV |
| Frame | 184TC |
| Frame Material | Steel |
| Frequency | 60.00 Hz |
| Haz Area Class and Group | None |
| Haz Area Division | Not Applicable |
| Motor Letter Type | Three Phase |
| Output @ Frequency | 3.000 HP @ 60 HZ |
| Phase | 3 |
| Synchronous Speed @ Frequency | 1800 RPM @ 60 HZ |
| Voltage @ Frequency | 230.0 V @ 60 HZ 460.0 V @ 60 HZ |
| Agency Approvals | UR CSA |
| Ambient Temperature | 40 °C |
| Auxillary Box | No Auxillary Box |
| Auxillary Box Lead Termination | None |
| Base Indicator | Rigid |
| Bearing Grease Type | Polyrex EM (-20F +300F) |
| Blower | None |
| Current @ Voltage | 4.100 A @ 460.0 V 8.200 A @ 230.0 V |
| Design Code | B |
| Drip Cover | No Drip Cover |
| Duty Rating | CONT |
| Efficiency @ 100% Load | 89.5 % |
| Electrically Isolated Bearing | Not Electrically Isolated |
| Feedback Device | NO FEEDBACK |
| Front Face Code | Encoder/Feedback Device |
| Front Shaft Indicator | None |
| Heater Indicator | No Heater |
| High Voltage Full Load Amps | 4.1 a |

Part detail

| | |
|--------------|------------|
| Revision | N |
| Type | AC |
| Mech. spec. | 36J565 |
| Base | |
| Status | PRD/A |
| Elec. spec. | 36WGS952 |
| Layout | 36LYJ565 |
| Eff. date | 09-27-2024 |
| CD Diagram | CD0005 |
| Poles | 04 |
| Leads | 9#16 |
| Proprietary | False |
| Created date | 05-31-2012 |

| | |
|--------------------------------------|----------------------------|
| Insulation Class | H |
| Inverter Code | Inverter Duty |
| KVA Code | K |
| Lifting Lugs | No Lifting Lugs |
| Locked Bearing Indicator | Locked Bearing |
| Max Speed | 6000 rpm |
| Motor Lead Exit | Ko Box |
| Motor Lead Quantity/Wire Size | 9 @ 16 AWG |
| Motor Lead Termination | Flying Leads |
| Motor Standards | NEMA |
| Motor Type | 3640M |
| Mounting Arrangement | F1 |
| Number of Poles | 4 |
| Overall Length | 19.27 IN |
| Power Factor | 78 |
| Product Family | Wash Down |
| Pulley End Bearing Type | Ball |
| Pulley Face Code | C-Face |
| Pulley Shaft Indicator | Standard |
| Rodent Screen | None |
| Service Factor | 1.00 |
| Shaft Diameter | 1.125 IN |
| Shaft Extension Location | Pulley End |
| Shaft Ground Indicator | No Shaft Grounding |
| Shaft Rotation | Reversible |
| Shaft Slinger Indicator | Shaft Slinger |
| Speed | 1760 rpm |
| Speed Code | Single Speed |
| Starting Method | Direct on line |
| Thermal Device - Bearing | None |
| Thermal Device - Winding | Normally Closed Thermostat |
| Vibration Sensor Indicator | No Vibration Sensor |
| Winding Thermal 1 | None |
| Winding Thermal 2 | None |

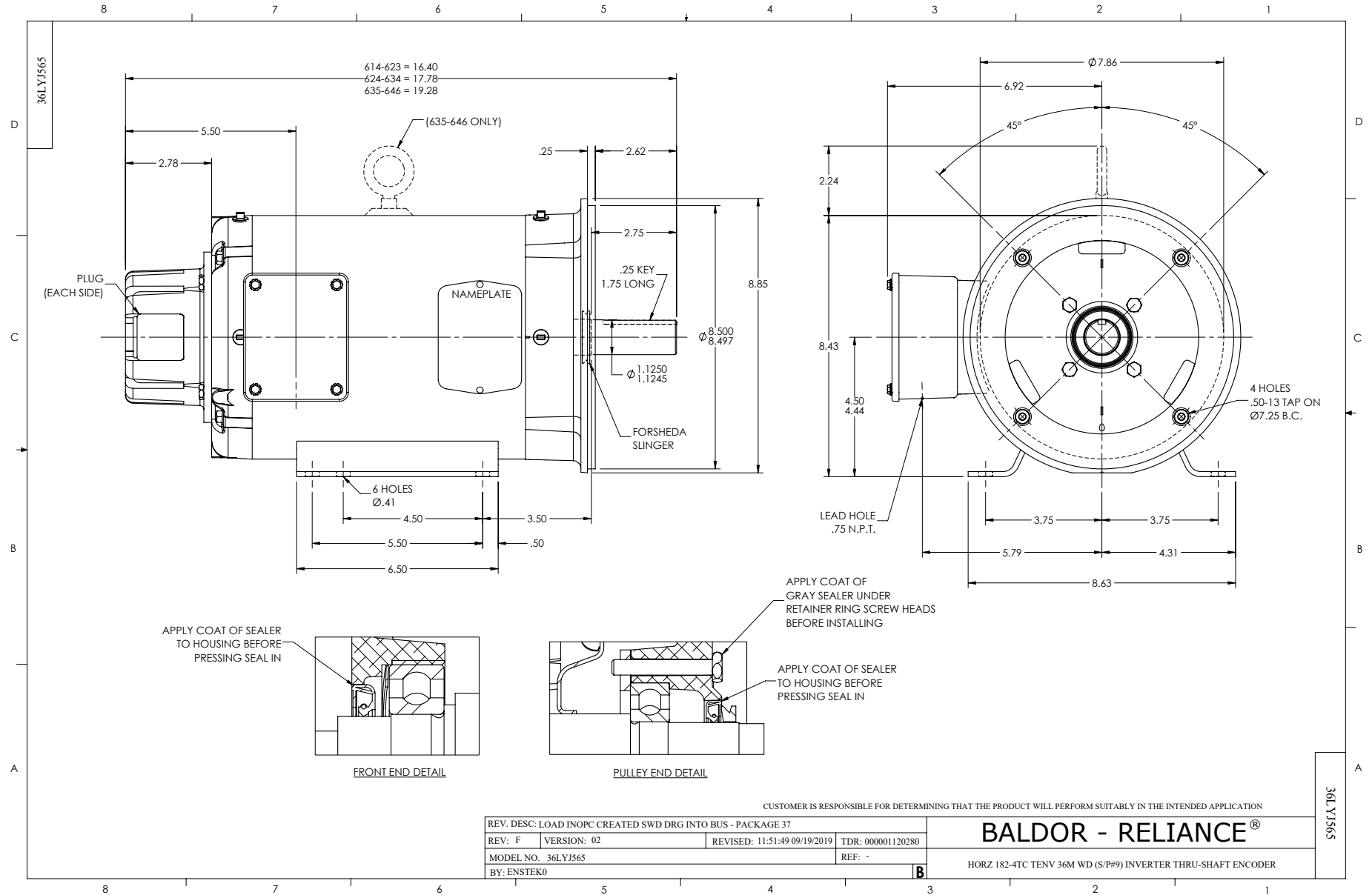
Nameplate

| NP3956L | | | |
|-----------------------|----------------|-------------------|--------------------|
| CAT.NO. | IDWNM3611T | | |
| SPEC. | 36J565S952G1 | | |
| FRAME | 184TC | H.P. | 3 TE |
| VOLTS | 230/460 | | |
| MAG. CUR. | 4.2/2.1 | F.L. AMPS | 8.2/4.1 |
| R.P.M. | 1760 | R.P.M. MAX | 6000 |
| HZ. | 60 | PH. | 3 CLASS H |
| SER.F. | 1.00 | DES. | B SL HZ 1.4 |
| NEMA NOM. EFF. | 89.5 | WK2 | 0.372 |
| BLWR V | PH | HZ | AMPS |
| RATING | 40C AMB-CONT | | |
| DE BRG | 6206 | ODE BRG | 6205 |
| CC | 010A SN | | |

Parts list

| Part number | Description | Quantity |
|---------------|--|----------|
| SA245428 | SA 36J565S952G1 | 1.000 ea |
| RA232315 | RA 36J565S952G1 | 1.000 ea |
| 36CB3005A03W | 36 CB .75 NPT @ 6 W/WHITE EPOXY | 1.000 ea |
| 35GS1022A03 | GASKET BOX .125 THK WHITE NEOPRENE | 1.000 ea |
| 51XB1016A08 | 10-16X 1/2HXWSSLD SERTYB | 2.000 ea |
| HA5027A01 | HA4066A01 T-DRAIN X2 BAGGED | 1.000 ea |
| 11XW1032G06 | 10-32 X .38, TAPTITE II, HEX WSHR SLTD U | 1.000 ea |
| 36EP3104A77MW | FREP TENV 205 BRG, (WD) FOR THRU-SHAFT | 1.000 ea |
| HW4032A01 | BLACK DRAIN PLUG FOR WASH DOWN MOTORS | 3.000 ea |
| HW4600B49 | SEAL 0.938 X 1.624 X 0.250 SINGLE LIP DB | 1.000 ea |
| HW5100A05 | WVY WSHR F/205 & 304 BRGS | 1.000 ea |
| 36PE3301A27MW | PUEP ASSEMBLY FOR ROUTING PURPOSES | 1.000 ea |
| HW4032A01 | BLACK DRAIN PLUG FOR WASH DOWN MOTORS | 3.000 ea |
| HW4600B50 | SEAL 1.156 X 1.874 X 0.250 SINGLE LIP DB | 1.000 ea |
| 10XN2520S26 | 1/4-20X 1 5/8 HEX HD SS | 4.000 ea |
| 35FH4801W | THRU-SHAFT ENCODER COVER INV/VEC F1 & F2 | 1.000 ea |
| WD4129 | 1.50 X 1.50 GRAY SNAP IN PLUG PROMOULD # | 2.000 ea |
| 10XN2520S08 | SCREW, 1/4-20 X 1/2 HHCS SS | 4.000 ea |
| 10XN2520S08 | SCREW, 1/4-20 X 1/2 HHCS SS | 1.000 ea |
| 36CB4518 | 36 LIPPED CB LID PRIMED | 1.000 ea |
| 37GS3010SP | 1/16"WHITE LID GASKET | 1.000 ea |
| 59XW0832S07 | TAPTITE II,HEX WSHR UNSLTD SER,410 S.S., | 4.000 ea |
| HW4600B36SP | V-RING SLINGER 1.188 X 1.690 X .24 VITON | 1.000 ea |
| HW2502E16 | #303 SS,SQ KEY 1/4 X 1.750 | 1.000 ea |
| HA7000A02 | KEY RETAINER RING, 1 1/8 DIA, 1 3/8 DIA | 1.000 ea |
| MJ5004A05 | #242-21 LOCTITE GENERAL PURPOSE MED. STR | 0.005 ea |
| MJ5001A27 | 32220KN GRAY SEALER *MIN BUY 4 QTS=1GAL | 0.001 qt |
| 85XU0407S04 | 4X1/4 U DRIVE PIN STAINLESS | 2.000 ea |
| LB1164 | LABEL,WARNING AND DRAIN | 1.000 ea |
| HW3200A01 | 3/8-16X3/4 EYEBOLT WELDED F/S | 1.000 ea |
| MJ1000A02 | GREASE, POLYREX EM EXXON | 0.050 lb |

| | | |
|-----------|--|----------|
| MG1025Z02 | ACTIVATOR WILKOFAST 060.02HF | 0.010 ga |
| MG1025W01 | WILKOFAST, 781.01, SIGNAL WHITE #9003 | 0.022 ga |
| HA3101S28 | THRUBOLT- 1/4-20 X 12.50 SS | 4.000 ea |
| LC0145B01 | CONNECTION LABEL | 1.000 ea |
| NP3956L | SS WD INV UL CSA-EEV PREM CC REV MTG | 1.000 ea |
| 36PA1001 | PKG GRP, PRINT PK1017A06 | 1.000 ea |
| LB1624 | COMBINED WARNING LABEL, ISO/ANSI PICTOGR | 1.000 ea |
| MN416A01 | TAG-INSTAL-MAINT no wire (2500bx)4/22 | 1.000 ea |



CD0005



LOW VOLTAGE (2Y)



LINE

HIGH VOLTAGE (1Y)



LINE

NOTES:

1. INTERCHANGE ANY TWO LINE LEADS TO REVERSE ROTATION.
2. OPTIONAL THERMOSTATS ARE PROVIDED WHEN SPECIFIED.
3. ACTUAL NUMBER OF INTERNAL PARALLEL CIRCUITS MAY BE A MULTIPLE OF THOSE SHOWN ABOVE.
4. LEAD COLORS ARE OPTIONAL. LEADS MUST ALWAYS BE NUMBERED AS SHOWN.

| | | | |
|---|---------|-------------------------|--------------|
| REV. DESC: REVISE TO SHOW OPTIONAL COLORS | | | |
| REV. LTR: E | BY: JLP | REVISED: 01/19/99 10:15 | TDR: 0171435 |
| S00000 | | FILE: AAA00005140 | MDL: - |
| | | MTL: - | |

BALDOR ELECTRIC Co.

3PH, DV, 9 LEADS

CD0005