

BALDOR • RELIANCE

Customer information packet

JL1317A

2HP, 3450RPM, 1PH, 60HZ, 56J, 3528L, OPEN, F1

Class - None

Division - Not Applicable

Specifications

Enclosure	OPEN
Frame	56J
Frame Material	Steel
Frequency	60.00 Hz
Motor Letter Type	Cap Start, Induction Run
Output @ Frequency	2.000 HP @ 60 HZ
Phase	1
Synchronous Speed @ Frequency	3600 RPM @ 60 HZ
Voltage @ Frequency	230.0 V @ 60 HZ 115.0 V @ 60 HZ
XP Class and Group	None
XP Division	Not Applicable
Agency Approvals	CSA UR
Ambient Temperature	40 °C
Auxillary Box	No Auxillary Box
Auxillary Box Lead Termination	None
Base Indicator	No Mounting
Bearing Grease Type	Polyrex EM (-20F +300F)
Blower	None
Current @ Voltage	26.000 A @ 115.0 V 13.000 A @ 230.0 V
Design Code	L
Drip Cover	Drip Cover
Duty Rating	CONT
Efficiency @ 100% Load	70.0 %
Electrically Isolated Bearing	Not Electrically Isolated
Feedback Device	NO FEEDBACK
Front Face Code	Terminal Panel
Front Shaft Indicator	None
Heater Indicator	No Heater
High Voltage Full Load Amps	13.0 a

Part detail

Revision	BK
Type	AC
Mech. spec.	35E522
Base	
Status	PRD/A
Elec. spec.	35WGW183
Layout	35LYE522
Eff. date	01-14-2019
CD Diagram	CD0307
Poles	02
Leads	4#14 A&J,1#18 B PH,1#10 #1TH
Proprietary	False
Created date	06-21-2007

Insulation Class	B
Inverter Code	Not Inverter
KVA Code	G
Lifting Lugs	No Lifting Lugs
Locked Bearing Indicator	Locked Bearing
Motor Lead Exit	Terminal Panel
Motor Lead Quantity/Wire Size	4 @ 14 AWG, A&J
Motor Lead Termination	None
Motor Standards	NEMA
Motor Type	3528L
Mounting Arrangement	F1
Number of Poles	2
Overall Length	13.25 IN
Power Factor	69
Product Family	General Purpose
Pulley End Bearing Type	Ball
Pulley Face Code	C-Face
Pulley Shaft Indicator	Ext Thread
Rodent Screen	None
RoHS Status	ROHS COMPLIANT
Service Factor	1.20
Shaft Diameter	0.625 IN
Shaft Extension Location	Pulley End
Shaft Ground Indicator	No Shaft Grounding
Shaft Rotation	Fixed Opposite Standard
Shaft Slinger Indicator	No Slinger
Speed	3450 rpm
Speed Code	Single Speed
Starting Method	Direct on line
Thermal Device - Bearing	None
Thermal Device - Winding	Do Not Use Eve-Not Valid
Vibration Sensor Indicator	No Vibration Sensor
Winding Thermal 1	Automatic Thermal Overload
Winding Thermal 1 Location	SB

Winding Thermal 2

None

Nameplate

NP1257L									
CAT.NO.	JL1317A								
SPEC.	35E522W183								
HP	2								
VOLTS	115/230								
AMP	26/13								
RPM	3450								
FRAME	56J		HZ	60		PH	1		
SER.F.	1.20	CODE	G	DES	L	CL	B		
NEMA-NOM-EFF	70	PF	69						
RATING	40C AMB-CONT								
CC				USABLE AT 208V			13		
DE	6205	ODE	6203						
ENCL	OPEN	SN							
	SFA 27.6/13.8								

Parts list

Part number	Description	Quantity
SA024304	SA 35E522W183	1.000 ea
RA020354	RA 35E522W183	1.000 ea
EC1645A06SP	ELEC CAP, 645-774 MFD, 125V, 2.06D X 4.	1.000 ea
WD3006A01	RSS-2-103JT 2W 10K RES. METAL OXIDE 5%	1.000 ea
RM1001A01	GROMMET "MIDSTATES"	1.000 ea
11XW0832G06	#8-32 X 3/8, TAPTITE II, HEX WSHR SLTD	1.000 ea
35EP3202A02SP	FR ENDPLATE, MACH	1.000 ea
SP1033A01	INSULATOR MODEL 35 TERM PANEL	1.000 ea
51XW0832A07	8-32 X .44, TAPTITE II, HEX WSHR SLTD SE	2.000 ea
85XU0407S04	4X1/4 U DRIVE PIN STAINLESS	2.000 ea
51XB1016A05	10-16X5/16HX WA SL SR TYB (F/S)	2.000 ea
HW5100A03	WAVY WASHER (W1543-017)	1.000 ea
35AD2000	AIR BAFFLE - GALVANNEAL	1.000 ea
60XW0632A06	6-32 X 3/8 TORX HEAD SCREW TAPTITE II	4.000 ea
51XN1032A20	10-32 X 1 1/4 HX WS SL SR	2.000 ea
35FH4500A02	DRIP COVER, STAMPED (W/ PRIMER)	1.000 ea
51XW0832A07	8-32 X .44, TAPTITE II, HEX WSHR SLTD SE	2.000 ea
35CB4500SP	TERMINAL BOX LID STAMPED	1.000 ea
51XW0832A07	8-32 X .44, TAPTITE II, HEX WSHR SLTD SE	2.000 ea
LB1009N	LABEL,ROTATION DIRECTION (ON ROLLS)	1.000 ea
MJ1000A02	GREASE, POLYREX EM EXXON	0.050 lb
MG1000G27	MED CHARCOAL METALLIC GREY 400-0096	0.017 ga
WD1000D90	T&B RC2577FM,90 DEG INSUL. FLAG TERMINAL	1.000 ea
HA3100A15	THRUBOLT 10-32 X 8.375	4.000 ea
WD1000A15	3-520132-2 AMP FLAG (4M/RL NON-CANC/NON-	2.000 ea
35CB4802A02SP	CAPACITOR COVER, STAMPED X	1.000 ea
35EP3402A00	MASTER DE,205 BRG,OPEN,W/TIGHTSLEEVE	1.000 ea
SP5066A01	35 TERM PANEL SWITCH W/E-BLK, 8-RED	1.000 ea
LB1118	LABEL,WARNING (ROLL LABEL)	1.000 ea
LC0307	1PH, DV, FIX, W & W/O THERM, TERM PLATE,	1.000 ea
NP1257L	ALUM UL CSA CC THERMAL REV MTG	1.000 ea

36PA1000	PKG GRP, PRINT PK1016A06	1.000 ea
PK3083	STYROFOAM PACKING CRADLE	1.000 ea
PK3088	MICROFOAM, 8"X"8 PERF. SHEETS	1.000 ea
PE-0000003	ZRTG PE ASSEMBLY	1.000 ea

AC Induction Motor Performance Data

Record # 9776

Typical performance - not guaranteed values

Winding: 35WGW183-R001		Type: 3528L	Enclosure: OPEN	
Nameplate Data			230 V, 60 Hz: High Voltage Connection	
Rated Output (HP)	2		Full Load Torque	3 LB-FT
Volts	115/230		Start Configuration	direct on line
Full Load Amps	26/13		Breakdown Torque	10.4 LB-FT
R.P.M.	3450		Pull-up Torque	5.9 LB-FT
Hz	60 Phase	1	Locked-rotor Torque	7.1 LB-FT
NEMA Design Code	L KVA Code	G	Starting Current	79 A
Service Factor (S.F.)	1.2		No-load Current	9.3 A
NEMA Nom. Eff.	70 Power Factor	69	Line-line Res. @ 25°C	0.842 Ω A Ph 0.843 Ω B Ph
Rating - Duty	40C AMB-CONT		Temp. Rise @ Rated Load	77°C
S.F. Amps	27.6/13.8		Temp. Rise @ S.F. Load	87°C

Load Characteristics 230 V, 60 Hz, 2 HP

% of Rated Load	25	50	75	100	125	150	S.F.
Power Factor	38	53	65	71	80	84	78
Efficiency	46	60	66	70	68	67.5	68.4
Speed	3569	3547	3523	3498	3469	3436	3475
Line amperes	9.5	10.3	11.4	13	14.7	16.8	13.8

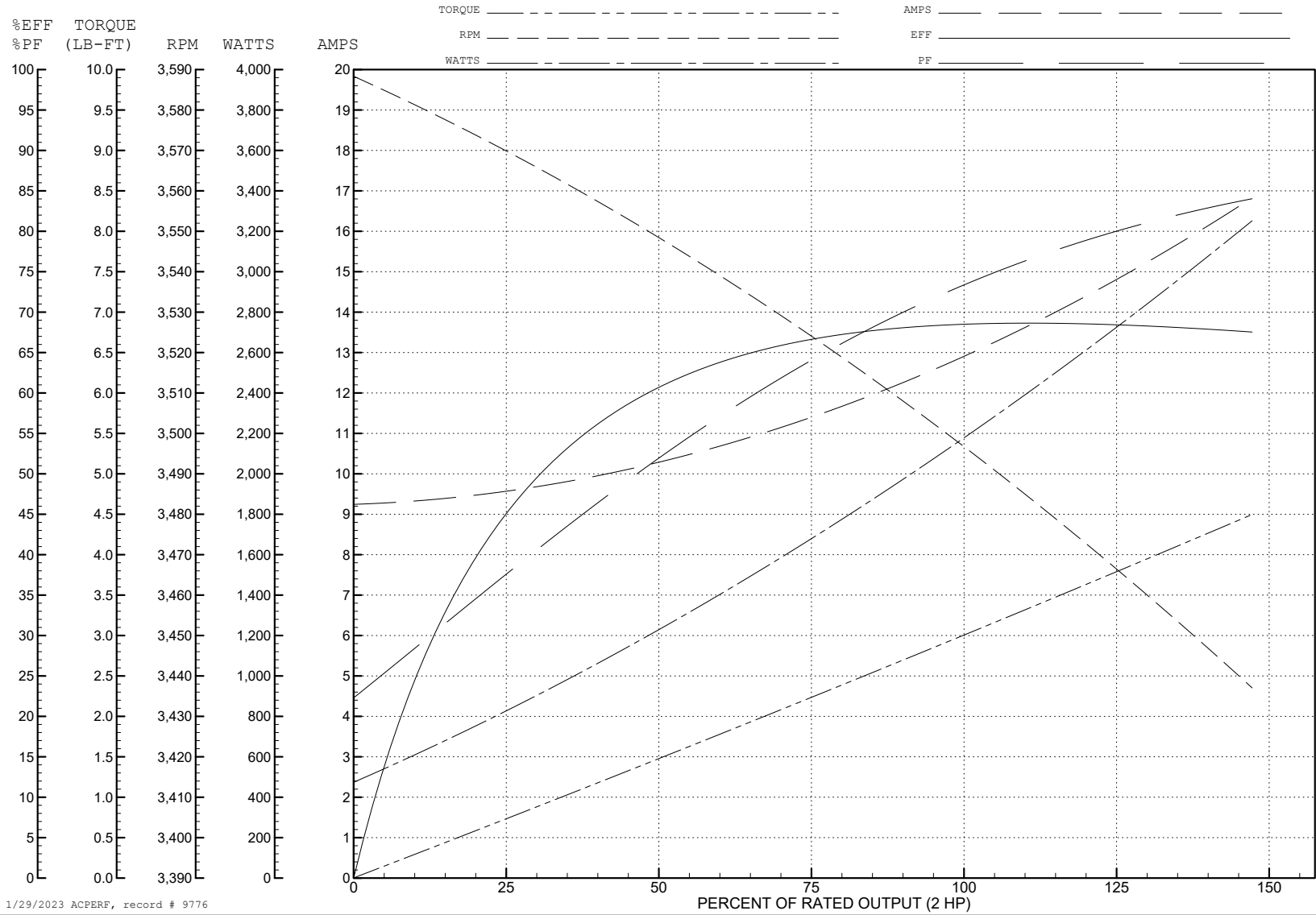
ABB Motors and Mechanical Inc.

WINDING # 35WGW183

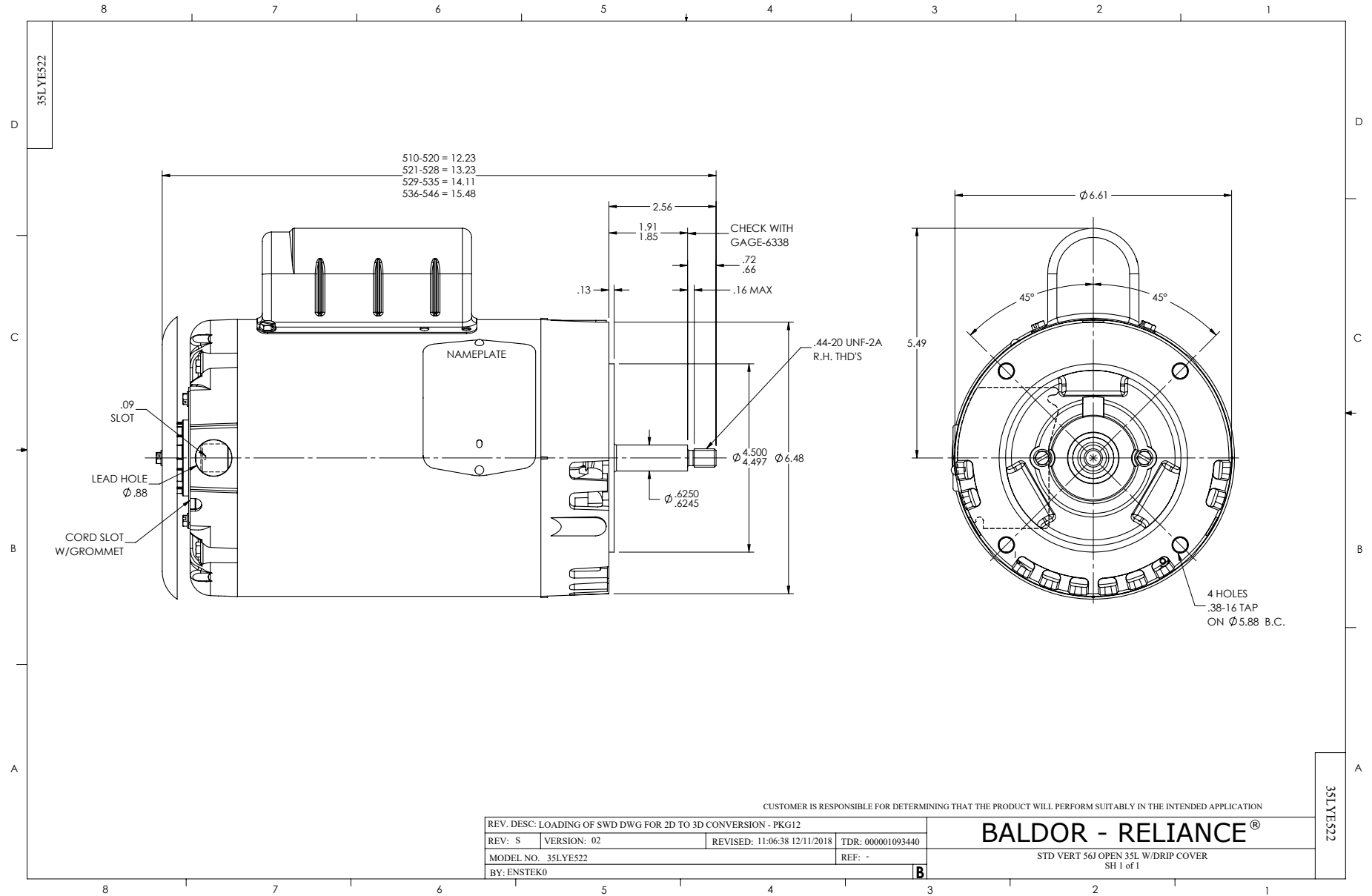
Typical performance - not guaranteed values.

2 HP 1 PH 60 HZ 3450 RPM 230 V 3528L

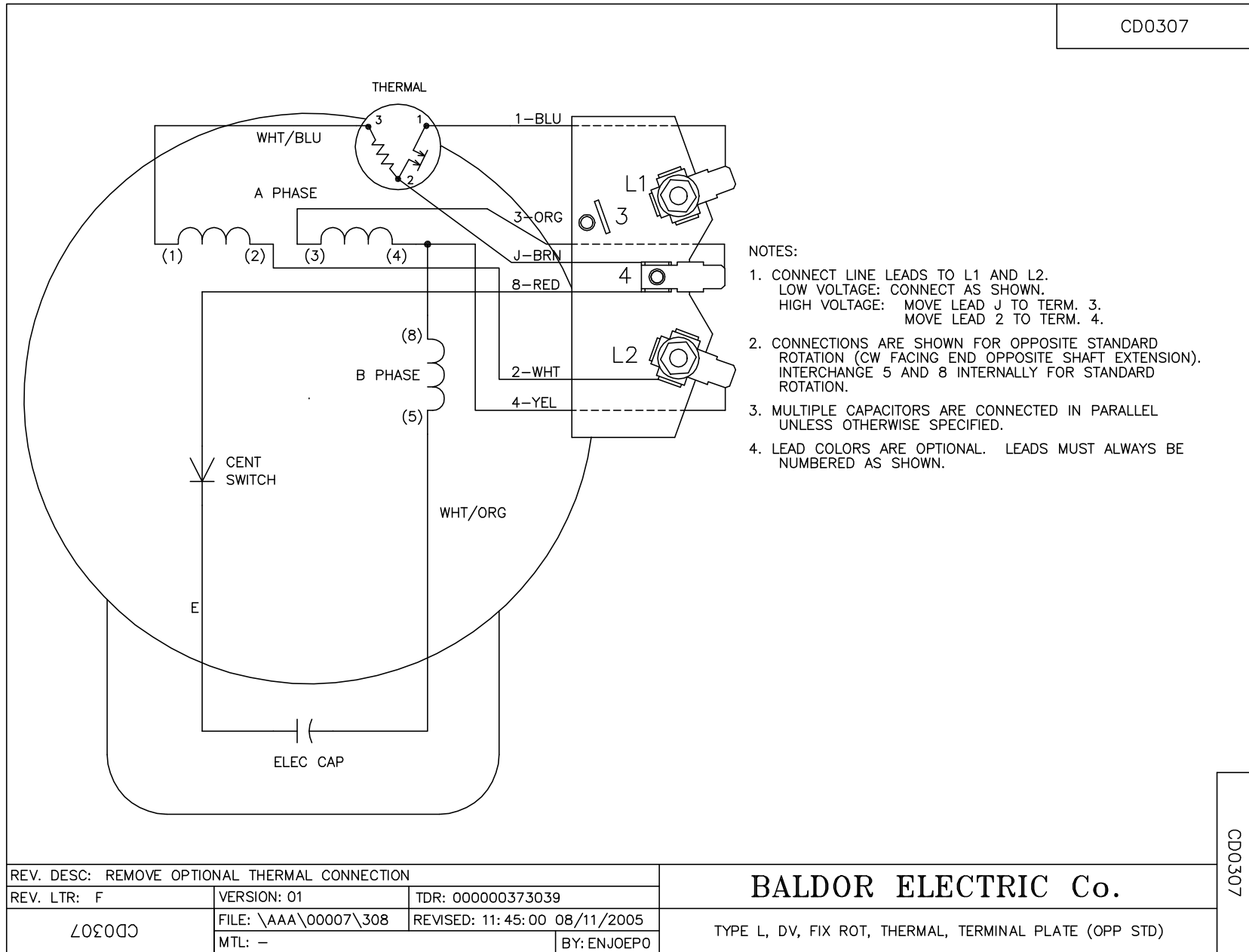
TORQUES (LB-FT): PO=10.4 PU=5.9 LR=7.1 LRA=79



1/29/2023 ACPERF, record # 9776



CD0307



REV. DESC: REMOVE OPTIONAL THERMAL CONNECTION		
REV. LTR: F	VERSION: 01	TDR: 000000373039
∟0307	FILE: \AAA\00007\308	REVISED: 11:45:00 08/11/2005
	MTL: -	BY: ENJOEPO

BALDOR ELECTRIC Co.

TYPE L, DV, FIX ROT, THERMAL, TERMINAL PLATE (OPP STD)

CD0307