

BALDOR • RELIANCE

Customer information packet

JMEWDM3550T

1.5HP, 3500RPM, 3PH, 60HZ, 143JM, 3528M, TENV

Class - None

Division - Not Applicable

Specifications

| | |
|--------------------------------|---|
| Enclosure | TENV |
| Frame | 143JM |
| Frame Material | Steel |
| Frequency | 60.00 Hz |
| Motor Letter Type | Three Phase |
| Output @ Frequency | 1.500 HP @ 60 HZ |
| Phase | 3 |
| Synchronous Speed @ Frequency | 3600 RPM @ 60 HZ |
| Voltage @ Frequency | 460.0 V @ 60 HZ 208.0 V @ 60 HZ 230.0 V @ 60 HZ |
| XP Class and Group | None |
| XP Division | Not Applicable |
| Agency Approvals | CSA UR |
| Ambient Temperature | 40 °C |
| Auxillary Box | No Auxillary Box |
| Auxillary Box Lead Termination | None |
| Base Indicator | Rigid |
| Bearing Grease Type | Polyrex EM (-20F +300F) |
| Blower | None |
| Current @ Voltage | 2.000 A @ 230.0 V 4.000 A @ 208.0 V |
| Design Code | B |
| Drip Cover | No Drip Cover |
| Duty Rating | CONT |
| Efficiency @ 100% Load | 85.5 % |
| Electrically Isolated Bearing | Not Electrically Isolated |
| Feedback Device | NO FEEDBACK |
| Front Face Code | Standard |
| Front Shaft Indicator | None |
| Heater Indicator | No Heater |

Part detail

| | |
|--------------|------------|
| Revision | L |
| Type | AC |
| Mech. spec. | 35E2990 |
| Base | |
| Status | PRD/A |
| Elec. spec. | 35WGR445 |
| Layout | 35LYE2990 |
| Eff. date | 03-10-2020 |
| CD Diagram | CD0005 |
| Poles | 02 |
| Leads | 9#18 |
| Proprietary | False |
| Created date | 12-04-2014 |

| | |
|-------------------------------|---------------------|
| High Voltage Full Load Amps | 2.0 a |
| Insulation Class | F |
| Inverter Code | Not Inverter |
| KVA Code | N |
| Lifting Lugs | No Lifting Lugs |
| Locked Bearing Indicator | Locked Bearing |
| Motor Lead Exit | Ko Box |
| Motor Lead Quantity/Wire Size | 9 @ 18 AWG |
| Motor Lead Termination | Flying Leads |
| Motor Standards | NEMA |
| Motor Type | 3528M |
| Mounting Arrangement | F1 |
| Number of Poles | 2 |
| Overall Length | 14.28 IN |
| Power Factor | 87 |
| Product Family | Wash Down |
| Pulley End Bearing Type | Sealed Bearing |
| Pulley Face Code | C-Face |
| Pulley Shaft Indicator | Tapped & Key |
| Rodent Screen | None |
| RoHS Status | ROHS COMPLIANT |
| Service Factor | 1.15 |
| Shaft Diameter | 0.875 IN |
| Shaft Extension Location | Pulley End |
| Shaft Ground Indicator | No Shaft Grounding |
| Shaft Rotation | Reversible |
| Shaft Slinger Indicator | Shaft Slinger |
| Speed | 3500 rpm |
| Speed Code | Single Speed |
| Starting Method | Direct on line |
| Thermal Device - Bearing | None |
| Thermal Device - Winding | None |
| Vibration Sensor Indicator | No Vibration Sensor |
| Winding Thermal 1 | None |

Winding Thermal 2

None

Nameplate

| NP2179L | | | | | | | | | |
|---------------------|------------------------|-------------|-----------------------|------------|---|--------------|---|--|--|
| CAT.NO. | JMEWDM3550T | | | | | | | | |
| SPEC. | 35E2990R445G1 | | | | | | | | |
| HP | 1.5 | | | | | | | | |
| VOLTS | 208-230/460 | | | | | | | | |
| AMP | 4/2 | | | | | | | | |
| RPM | 3500 | | | | | | | | |
| FRAME | 143JM | | HZ | 60 | | PH | 3 | | |
| SER.F. | 1.15 | CODE | N | DES | B | CLASS | F | | |
| NEMA-NOM-EFF | 85.5 | PF | 87 | | | | | | |
| RATING | 40C AMB-CONT | | | | | | | | |
| CC | 010A | | USABLE AT 208V | | | | | | |
| DE | 6206 | | ODE | 6203 | | | | | |
| ENCL | TENV | SN | | | | | | | |
| BLANK | 20:1CT, 20:1VT, 1.00SF | | | | | | | | |

Parts list

| Part number | Description | Quantity |
|---------------|--|----------|
| SA290835 | SA 35E2990R445G1 | 1.000 ea |
| RA276987 | RA 35E2990R445G1 | 1.000 ea |
| NS2512A01 | INSULATOR, CONDUIT BOX X | 1.000 ea |
| 35CB3008A01G | SPL CONDUIT BOX, MACHINED GRAY | 1.000 ea |
| 35GS1039 | 05 MOLDED GASKET W/LIP, 1.12 LEAD HOLE, | 1.000 ea |
| 51XB1016A08 | 10-16X 1/2HXWSSLD SERTYB | 2.000 ea |
| 11XW1032G06 | 10-32 X .38, TAPTITE II, HEX WSHR SLTD U | 1.000 ea |
| 35EP3122D00W | MASTER ODE,203 BRG,.125NPT DRNS(WHITE) | 1.000 ea |
| HW4072A01 | BLACK DRAIN PLUG FOR .125 NPT | 3.000 ea |
| HW4032A01 | BLACK DRAIN PLUG FOR WASH DOWN MOTORS | 3.000 ea |
| HW5100A03 | WAVY WASHER (W1543-017) | 1.000 ea |
| 35EP3401T07MW | PU EP FOR SEAL W/"O" DRILLS & NO GRS, W/ | 1.000 ea |
| HW4600B50 | SEAL 1.156 X 1.874 X 0.250 SINGLE LIP DB | 1.000 ea |
| HW4600B36SP | V-RING SLINGER 1.188 X 1.690 X .24 VITON | 1.000 ea |
| 10XN1032S16 | 10-32X1 HEX HEAD S STEEL | 2.000 ea |
| 35CB4522 | 35 LIPPED CB LID PRIMED | 1.000 ea |
| 35GS1030A02 | 35 GS FOR CB LID - WHITE NEOPRENE | 1.000 ea |
| 59XW0832S07 | TAPTITE II,HEX WSHR UNSLTD SER,410 S.S., | 4.000 ea |
| HW2502D13 | SS KEY, 3/16 SQ X 1.375 | 1.000 ea |
| HA7000A01 | KEY RETAINER 7/8" DIA SHAFT | 1.000 ea |
| 85XU0407S04 | 4X1/4 U DRIVE PIN STAINLESS | 2.000 ea |
| LB1164 | LABEL,WARNING AND DRAIN | 1.000 ea |
| HA5027A02 | HA4054 T-DRAIN X2 BAGGED WITH LABEL | 1.000 ea |
| MJ1000A02 | GREASE, POLYREX EM EXXON | 0.050 lb |
| MJ5001A27 | 32220KN GRAY SEALER *MIN BUY 4 QTS=1GAL | 0.001 qt |
| MG1025W01 | WILKOFAS, 781.01, SIGNAL WHITE #9003 | 0.017 ga |
| HA3100S07 | THRUBOLT 10-32 X 8.375 SS | 4.000 ea |
| MN416A01 | TAG-INSTAL-MAINT no wire (2100bx)4/22 | 1.000 ea |
| LC0005 | CONN.DIA.,TY M,9-LD,DUAL VOLT,REVERSING | 1.000 ea |
| NP2179L | SS WD SUPER-E UL CSA CC REV MTG | 1.000 ea |
| 36PA1000 | PKG GRP, PRINT PK1016A06 | 1.000 ea |

FE-0000001

ZRTG FE ASSEMBLY

1.000 ea

AC Induction Motor Performance Data

Record # 20327

Typical performance - not guaranteed values

| Winding: 35WGR445-R006 | | Type: 3528M | | Enclosure: TENV | |
|-------------------------------|--------------------------|----------------------------|--|------------------------|--|
| Nameplate Data | | | 460 V, 60 Hz: High Voltage Connection | | |
| Rated Output (HP) | 1.5 | Full Load Torque | 2.3 LB-FT | | |
| Volts | 208-230/460 | Start Configuration | direct on line | | |
| Full Load Amps | 4/2 | Breakdown Torque | 12 LB-FT | | |
| R.P.M. | 3500 | Pull-up Torque | 8.2 LB-FT | | |
| Hz | 60 Phase | 3 | Locked-rotor Torque | 11 LB-FT | |
| NEMA Design Code | B KVA Code | N | Starting Current | 23.5 A | |
| Service Factor (S.F.) | 1.15 | No-load Current | 0.9 A | | |
| NEMA Nom. Eff. | 85.5 Power Factor | 87 | Line-line Res. @ 25°C | 6.95 Ω | |
| Rating - Duty | 40C AMB-CONT | | Temp. Rise @ Rated Load | 73°C | |
| S.F. Amps | | | Temp. Rise @ S.F. Load | 84°C | |
| | | | Locked-rotor Power Factor | 48.4 | |

Load Characteristics 460 V, 60 Hz, 1.5 HP

| % of Rated Load | 25 | 50 | 75 | 100 | 125 | 150 | S.F. |
|------------------------|-----------|-----------|-----------|------------|------------|------------|-------------|
| Power Factor | 51 | 71 | 81 | 87 | 90 | 91 | 89 |
| Efficiency | 73.8 | 82.5 | 85.2 | 86.1 | 86 | 85.4 | 86 |
| Speed | 3568 | 3544 | 3519 | 3493 | 3466 | 3434 | 3477 |
| Line amperes | 1.1 | 1.3 | 1.6 | 1.9 | 2.3 | 2.8 | 2.14 |

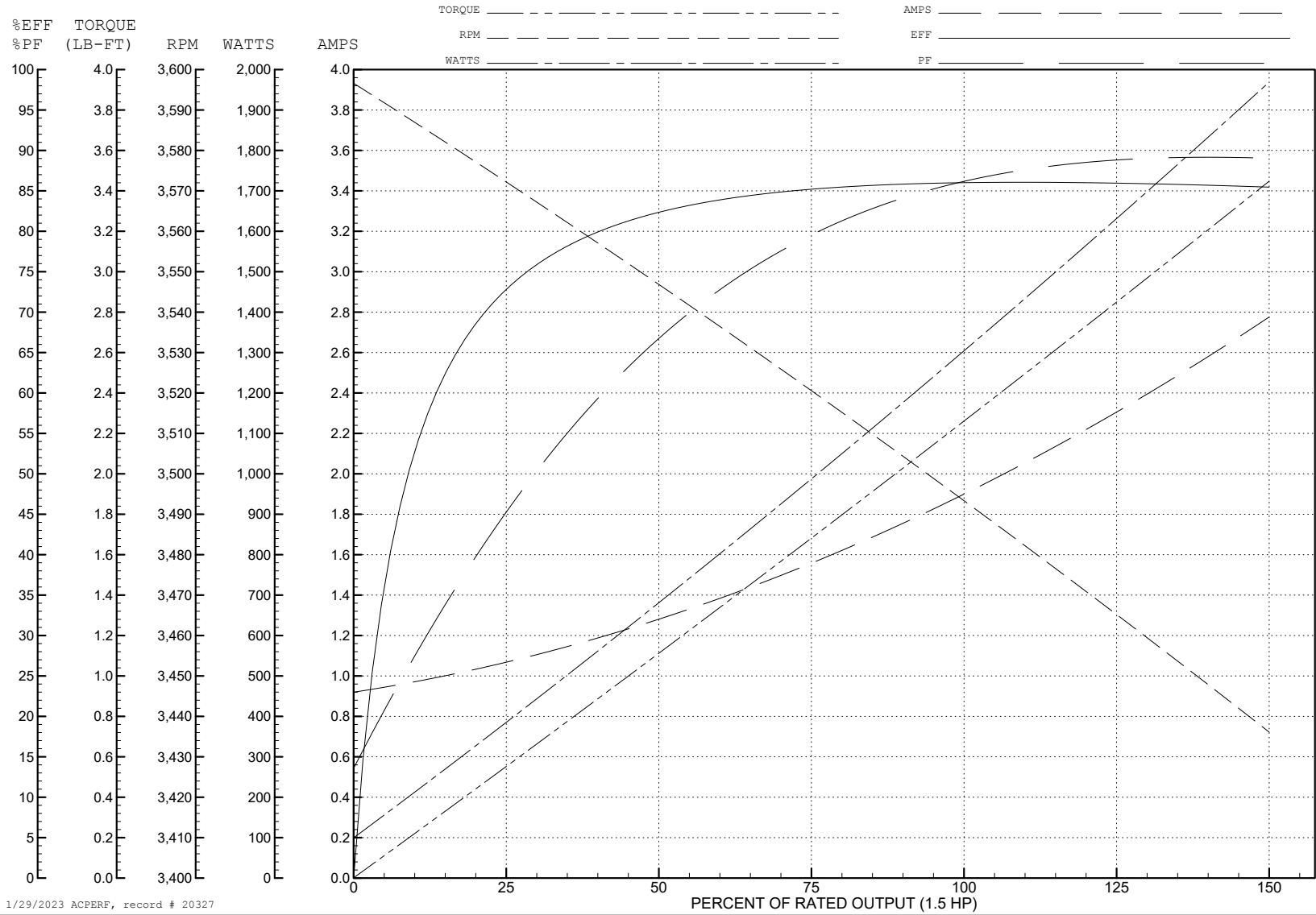
ABB Motors and Mechanical Inc.

WINDING # 35WGR445

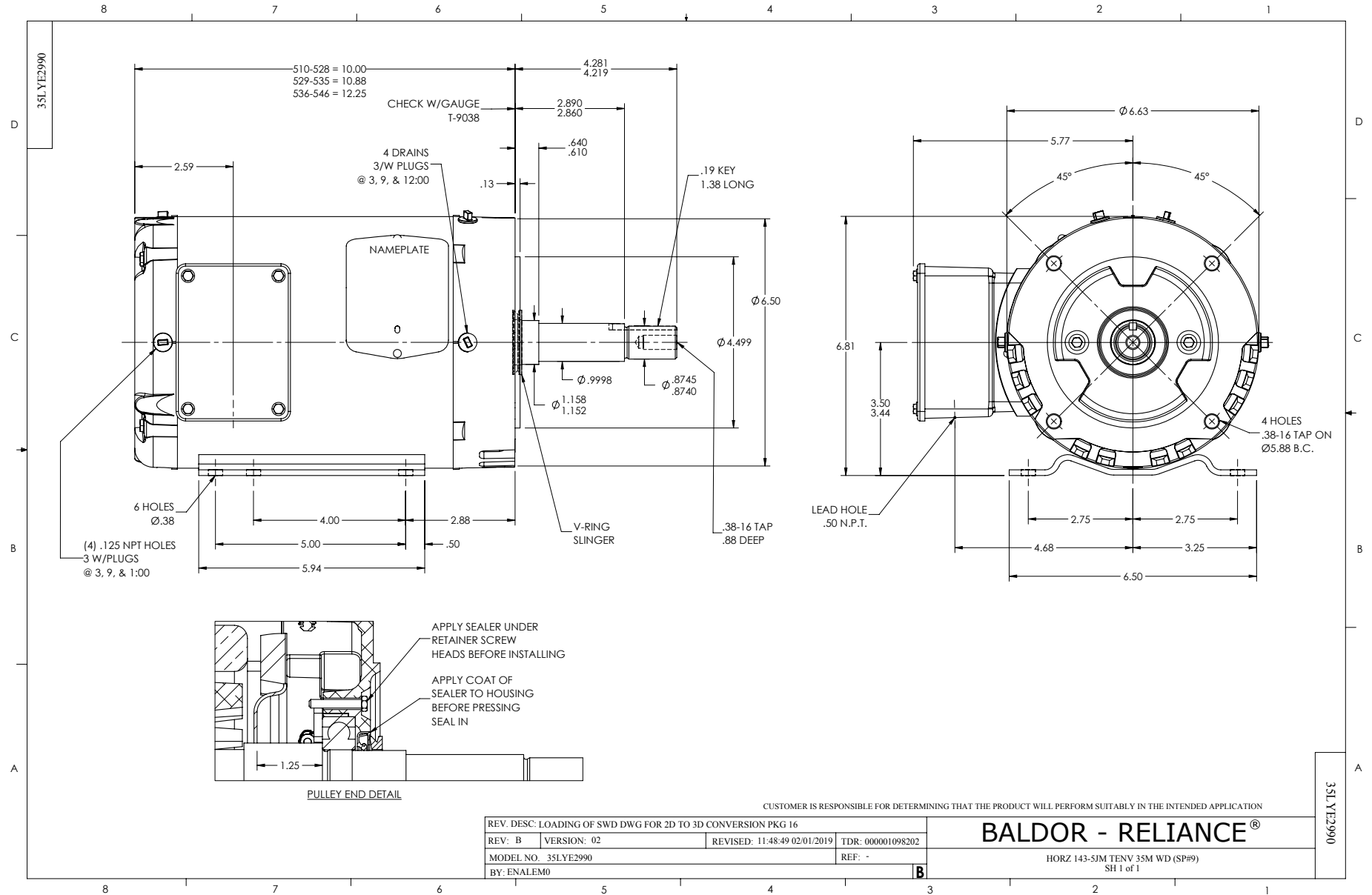
Typical performance - not guaranteed values.

1.5 HP 3 PH 60 HZ 3500 RPM 460 V 3528M

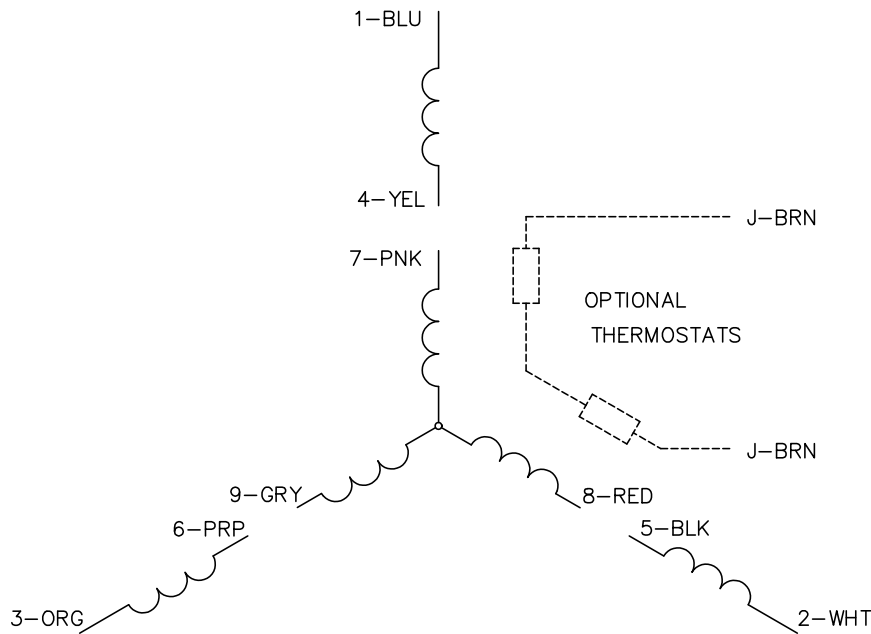
TORQUES (LB-FT): PO=12 PU=8.2 LR=11 LRA=23.5



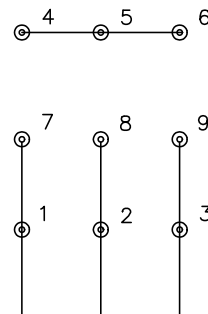
1/29/2023 ACPERF, record # 20327



CD0005

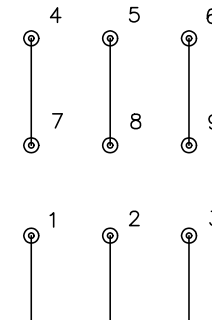


LOW VOLTAGE
(2Y)



LINE

HIGH VOLTAGE
(1Y)



LINE

NOTES:

1. INTERCHANGE ANY TWO LINE LEADS TO REVERSE ROTATION.
2. OPTIONAL THERMOSTATS ARE PROVIDED WHEN SPECIFIED.
3. ACTUAL NUMBER OF INTERNAL PARALLEL CIRCUITS MAY BE A MULTIPLE OF THOSE SHOWN ABOVE.
4. LEAD COLORS ARE OPTIONAL. LEADS MUST ALWAYS BE NUMBERED AS SHOWN.

CD0005

| | | | |
|---|---------|-------------------------|--------------|
| REV. DESC: REVISE TO SHOW OPTIONAL COLORS | | | |
| REV. LTR: E | BY: JLP | REVISED: 01/19/99 10:15 | TDR: 0171435 |
| S00000 | | FILE: AAA00005140 | MDL: - |
| | | MTL: - | |

BALDOR ELECTRIC Co.

3PH, DV, 9 LEADS