

BALDOR • RELIANCE

Customer information packet

JMEWDM41906T

60M 2P TEFC HOR 256JM SP9 HOSE DOWN SE

Class - None

Division - Not Applicable

Specifications

Enclosure	TEFC
Frame	256JM
Frame Material	Steel
Frequency	60.00 Hz
Haz Area Class and Group	None
Haz Area Division	Not Applicable
Motor Letter Type	Three Phase
Output @ Frequency	20.000 HP @ 60 HZ
Phase	3
Synchronous Speed @ Frequency	3600 RPM @ 60 HZ
Voltage @ Frequency	230.0 V @ 60 HZ 460.0 V @ 60 HZ
Agency Approvals	CSA EEV NEMA PREMIUM UR CSA
Ambient Temperature	40 °C
Auxillary Box	No Auxillary Box
Auxillary Box Lead Termination	None
Base Indicator	Rigid
Bearing Grease Type	Polyrex EM (-20F +300F)
Blower	None
Current @ Voltage	21.500 A @ 460.0 V 43.000 A @ 230.0 V
Design Code	A
Drip Cover	No Drip Cover
Duty Rating	CONT
Efficiency @ 100% Load	91.0 %
Electrically Isolated Bearing	Not Electrically Isolated
Feedback Device	NO FEEDBACK
Front Shaft Indicator	None
Heater Indicator	No Heater

Part detail

Revision	R
Type	AC
Mech. spec.	39K68
Base	
Status	PRD/A
Elec. spec.	39WGX632
Layout	39LYK068
Eff. date	05-16-2024
CD Diagram	CD0005
Poles	02
Leads	9#10
Proprietary	False
Created date	10-23-2018

High Voltage Full Load Amps	21.5 a
Insulation Class	F
Inverter Code	Inverter Ready
KVA Code	G
Lifting Lugs	Standard Lifting Lugs
Locked Bearing Indicator	Locked Bearing
Motor Lead Quantity/Wire Size	9 @ 10 AWG
Motor Lead Termination	Flying Leads
Motor Standards	NEMA
Motor Type	3960M
Mounting Arrangement	F1
Number of Poles	2
Overall Length	25.06 IN
Power Factor	93
Product Family	Wash Down
Pulley End Bearing Type	Sealed Bearing
Pulley Face Code	C-Face
Pulley Shaft Indicator	Tapped & Key
Rodent Screen	None
Service Factor	1.15
Shaft Diameter	1.250 IN
Shaft Ground Indicator	No Shaft Grounding
Shaft Rotation	Reversible
Shaft Slinger Indicator	Shaft Slinger
Speed	3525 rpm
Speed Code	Single Speed
Starting Method	Direct on line
Thermal Device - Winding	None
Vibration Sensor Indicator	No Vibration Sensor
Winding Thermal 1	None
Winding Thermal 2	None

Nameplate

NP1669L									
CAT.NO.	JMEWDM41906T								
SPEC.	39K068X632G1								
HP	20								
VOLTS	230/460								
AMP	43/21.5								
RPM	3525								
FRAME	256JM		HZ	60		PH	3		
SER.F.	1.00	CODE	G	DES	A	CLASS	F		
NEMA-NOM-EFF	91	PF	93						
RATING	40C AMB-CONT								
CC	010A								
DE	6309		ODE	6208					
ENCL	TEFC	SN							
BLANK	20:1CT, 20:1VT, 1.00SF								

Parts list

Part number	Description	Quantity
SA362237	SA 39K068X632G1	1.000 ea
RA351455	RA 39K068X632G1	1.000 ea
09FN3001C01SP	EXTERNAL FAN, PLASTIC (COMES W/SCREW FRO	1.000 ea
HA6016P	ADAPTER, CAST CONDUIT BOX EPOXY PRIMER	1.000 ea
09GS1006	GASKET, CONDUIT BOX, NEOP-1/16 THICK-BLA	1.000 ea
09CB3002A01P	CB MACH - 1.25 N.P.T. LEAD HOLE W/EPOXY	1.000 ea
09GS1017	GASKET, CONDUIT BOX, .125 THICK BLACK NE	1.000 ea
51XW2520A12	.25-20 X .75, TAPTITE II, HEX WSHR SLTD	2.000 ea
WD1000B16	T&B CX70TN OR L70P TERMINAL LUG	1.000 ea
59XW2520G07	.25-20X.44,HEX SER WSHR,TAPTITE 2,GREEN	1.000 ea
39EP1100A08WP	FR ENDPLATE, MACH W/WHITE EPOXY, PRIMED	1.000 ea
HW4032A01	BLACK DRAIN PLUG FOR WASH DOWN MOTORS	3.000 ea
HW4600B44	V-RING SLINGER 1.500 X 1.810 X .28 VITON	1.000 ea
HW5100A08	W3118-035 WVY WSHR (WB)	1.000 ea
10XN2520S28	1/4-20X 1 3/4 HEX HD SS X	4.000 ea
39EP1500A06P	PU ENDPLATE, MACH W/EPOXY PRIMER	1.000 ea
HW4600A27	SEAL 1.750 X 2.441 X 0.313 SINGLE LIP	1.000 ea
HW4600B67	V-RING SLINGER 1.770 X 2.170 X .28 VITON	1.000 ea
HA3154S02	THRUBOLT STUD 3/8-16 X 15.875 SS	4.000 ea
XY3816S12	3/8-16 HEX FINISHED NUT SS	8.000 ea
HA2101A05	SS SPACER,SCH 40,.25" SS PIPE,.625" LONG	3.000 ea
10XN2520S20	1/4-20X 1 1/4 HEX HD CAP SS	3.000 ea
09CB3501P	CONDUIT BOX LID FOR 09CB3001 & 09CB3002	1.000 ea
12GS1002	GASKET, CONDUIT BOX LID, NEOP	1.000 ea
19XT2520S12	1/4-20X3/4 HWH NO SLOT TY.23 18-8 S.S.	2.000 ea
HW1001S25	WASHER, 1/4 SPLT LK, STAINLESS STEEL	2.000 ea
HW2502E18	#303 SS,SQ KEY 1/4 X 2.000	1.000 ea
MJ5001A27	32220KN GRAY SEALER *MIN BUY 4 QTS=1GAL	0.016 qt
MJ5002A01	SILICON RUBBER SEALANT, 732CL 10.3 OZ TU	0.025 ea
LB1164	LABEL,WARNING AND DRAIN	1.000 ea
MJ1000A02	GREASE, POLYREX EM EXXON	0.085 lb

HW4032A01	BLACK DRAIN PLUG FOR WASH DOWN MOTORS	3.000 ea
HW2500A25	WOODRUFF KEY USA #1008 #BLOW CARBON STEE	1.000 ea
09FH4000A23MWP	FAN COVER, MACH W/WHITE EPOXY	1.000 ea
MG1025W01	WILKOFAS, 781.01, SIGNAL WHITE #9003	0.050 ga
85XU0407S04	4X1/4 U DRIVE PIN STAINLESS	2.000 ea
LB1624	COMBINED WARNING LABEL, ISO/ANSI PICTOGR	1.000 ea
LC0005	CONN.DIA.,TY M,9-LD,DUAL VOLT,REVERSING	1.000 ea
NP1669L	SS WD SUPER-E UL PREM REV MTG	1.000 ea
40PA1000	PACKAGING GROUP	1.000 ea
MN416A01	TAG-INSTAL-MAINT no wire (2100bx)4/22	1.000 ea
LD7020E09	LEAD SET, 10AWG, 9 LEAD, 20" LONG LEADS	1.000 ea

AC Induction Motor Performance Data

Record # 26903

Typical performance - not guaranteed values

Winding: 39WGX632-R001		Type: 3960M	Enclosure: TEFC	
Nameplate Data			460 V, 60 Hz: High Voltage Connection	
Rated Output (HP)	20	Full Load Torque	29.6 LB-FT	
Volts	230/460	Start Configuration	direct on line	
Full Load Amps	43/21.5	Breakdown Torque	114 LB-FT	
R.P.M.	3525	Pull-up Torque	35.3 LB-FT	
Hz	60 Phase	3	Locked-rotor Torque	51 LB-FT
NEMA Design Code	B KVA Code	G	Starting Current	152 A
Service Factor (S.F.)	1.15	No-load Current	4.75 A	
NEMA Nom. Eff.	91 Power Factor	93	Line-line Res. @ 25°C	0.437 Ω
Rating - Duty	40C AMB-CONT	Temp. Rise @ Rated Load	75°C	
S.F. Amps		Temp. Rise @ S.F. Load	97°C	
		Locked-rotor Power Factor	27	
		Rotor inertia	1.53 LB-FT ²	

Load Characteristics 460 V, 60 Hz, 20 HP

% of Rated Load	25	50	75	100	125	150	S.F.
Power Factor	71	88	92	93	93	92	93
Efficiency	91	93.5	93.3	92.5	91.2	89.7	91.7
Speed	3581	3562	3541	3519	3492	3465	3503
Line amperes	6.84	11.2	16.2	21.5	27.6	33.8	25.2

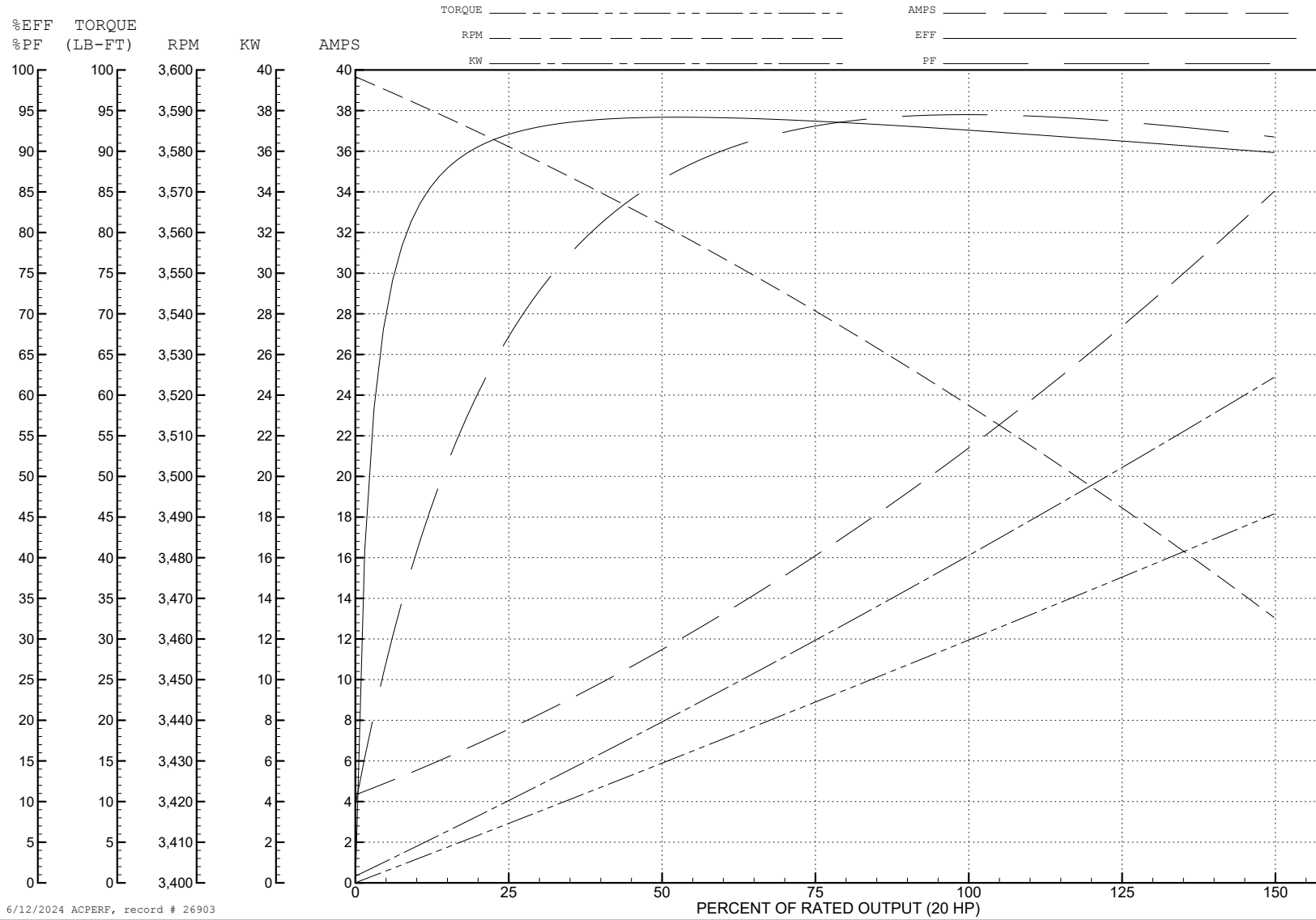
ABB Motors and Mechanical Inc.

WINDING # 39WGX632

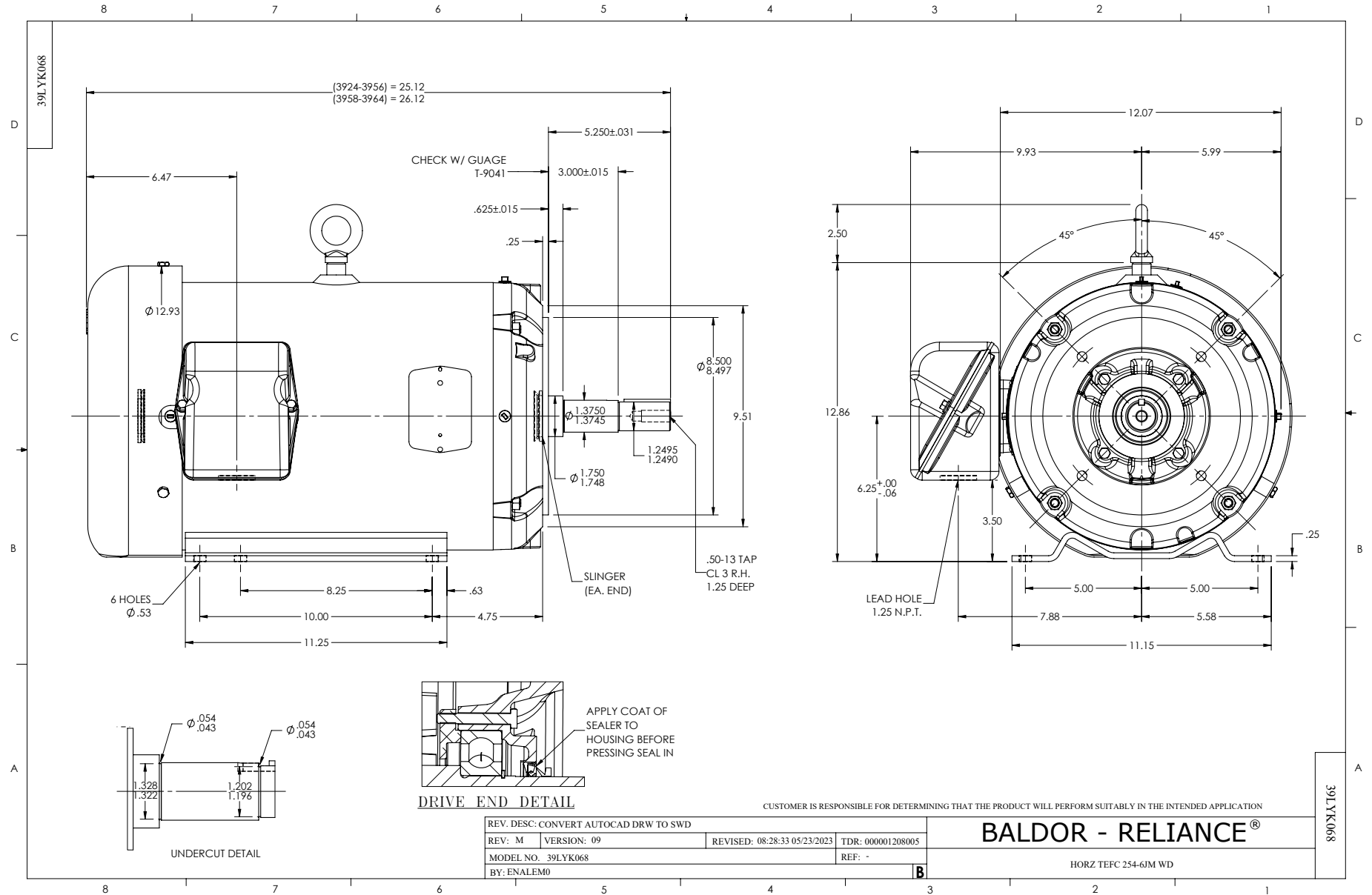
20 HP 3 PH 60 HZ 3525 RPM 460 V 3960M

Typical performance - not guaranteed values.

TORQUES (LB-FT): PO=114 PU=35.3 LR=51 LRA=152



6/12/2024 ACPERF, record # 26903



CD0005



LOW VOLTAGE
(2Y)



LINE

HIGH VOLTAGE
(1Y)



LINE

NOTES:

1. INTERCHANGE ANY TWO LINE LEADS TO REVERSE ROTATION.
2. OPTIONAL THERMOSTATS ARE PROVIDED WHEN SPECIFIED.
3. ACTUAL NUMBER OF INTERNAL PARALLEL CIRCUITS MAY BE A MULTIPLE OF THOSE SHOWN ABOVE.
4. LEAD COLORS ARE OPTIONAL. LEADS MUST ALWAYS BE NUMBERED AS SHOWN.

CD0005

REV. DESC: REVISE TO SHOW OPTIONAL COLORS			
REV. LTR: E	BY: JLP	REVISED: 01/19/99 10:15	TDR: 0171435
S00000		FILE: AAA00005140	MDL: -
		MTL: -	

BALDOR ELECTRIC Co.

3PH, DV, 9 LEADS