

BALDOR® • RELIANCE 

Product Information Packet

JMFSWDM23933T-E

56M 4P TEFC HOR 254JM S/P9-12 SE ENCAP

Part Detail							
Revision:	M	Status:	PRD/A	Change #:		Proprietary:	No
Type:	AC	Elec. Spec:	39WGX682	CD Diagram:	CD0005	Mfg Plant:	
Mech. Spec:	39E754	Layout:	39LYE754	Poles:	04	Created Date:	05-17-2018
Base:	RG	Eff. Date:	10-14-2020	Leads:	9#12		

Specs			
Catalog Number:	JMFSWDM23933T-E	Heater Indicator:	No Heater
Enclosure:	TEFC	Insulation Class:	H
Frame:	254JM	Inverter Code:	Inverter Ready
Frame Material:	Stainless Steel	KVA Code:	G
Motor Letter Type:	Three Phase	Lifting Lugs:	Standard Lifting Lugs
Output @ Frequency:	15.000 HP @ 60 HZ	Locked Bearing Indicator:	Locked Bearing
Synchronous Speed @ Frequency:	1800 RPM @ 60 HZ	Motor Lead Quantity/Wire Size:	9 @ 12 AWG
Voltage @ Frequency:	230.0 V @ 60 HZ	Motor Lead Termination:	Flying Leads
	460.0 V @ 60 HZ	Motor Type:	3956M
XP Class and Group:	None	Mounting Arrangement:	F1
XP Division:	Not Applicable	Power Factor:	86
Agency Approvals:	UR	Product Family:	WD All SS Encapsulated
	CSA	Pulley End Bearing Type:	Sealed Bearing
Auxillary Box:	No Auxillary Box	Pulley Face Code:	C-Face
Auxillary Box Lead Termination:	None	Pulley Shaft Indicator:	Standard
Base Indicator:	Rigid	Rodent Screen:	None
Bearing Grease Type:	Polyrex EM (-20F +300F)	Shaft Ground Indicator:	No Shaft Grounding
Blower:	None	Shaft Rotation:	Reversible

Current @ Voltage:	17.500 A @ 460.0 V	Shaft Slinger Indicator:	No Slinger
	35.000 A @ 230.0 V	Speed Code:	Single Speed
	38.000 A @ 208.0 V	Motor Standards:	NEMA
Design Code:	A	Starting Method:	Direct on line
Drip Cover:	No Drip Cover	Thermal Device - Bearing:	None
Duty Rating:	CONT	Thermal Device - Winding:	None
Electrically Isolated Bearing:	Not Electrically Isolated	Vibration Sensor Indicator:	No Vibration Sensor
Feedback Device:	NO FEEDBACK	Winding Thermal 1:	None
Front Shaft Indicator:	None	Winding Thermal 2:	None

Nameplate NP1953L01											
CAT.NO.	JMFSWDM23933T-E										
SPEC.	39E754X682G1										
HP	15										
VOLTS	230/460										
AMPS	35/17.5										
R.P.M.	1765										
FRAME	254JM				HZ	60				PH	3
SER.F.	1.15			CODE	G	DES.	A			CLASS	H
NEMA NOM. EFF.	92.4				P.F.	86					
RATING	40C AMB-CONT										
CC	010A				USABLE AT 208V						38
DE	6309				ODE	6309					
ENCL	TEFC		SN								
	2:1 CT/10:1 VT										

Parts List		
Part Number	Description	Quantity
SA357748	SA 39E754X682G1	1.000 EA
RA346762	RA 39E754X682G1	1.000 EA
09FN3001D01SP	EXTERNAL FAN, PLASTIC (COMES W/SCREW FRO	1.000 EA
39CB1001A01	39 MID-SECTION, - 3PC. BOX W/5.75-12 THD	1.000 EA
RM1070A79	O-RING, -051 VITON/FKM .070CS X 5.489ID	1.000 EA
10XN2520S10	1/4-20X 5/8 HEX HD CAP SS	4.000 EA
WD1000B16	T&B CX70TN OR L70P TERMINAL LUG	1.000 EA
10XN2520G08	25-20 X.50 - PAINTED GREEN	1.000 EA
39EP1904A02	FREP ENCL 309 BRG (STAINLESS) POLISHED	1.000 EA
RM1070A80	O-RING, VITON/FKM .070CS X 10.800ID	1.000 EA
HW4600F81	45 X 68 X 10 LIP SEAL, GRAPHITE INFUSED	1.000 EA
HW4600F80	45 X 62 X 4.5 AFS SEAL, GRAPHITE INFUSED	1.000 EA
HW4500S33	1/8 NPT STAINLESS #304 SS PLUG	3.000 EA
HA4002A03	#304 S.S. DRAIN FITTING, .125 NPT (.44 H	1.000 EA
HW5100A11	W3917-042 WVY WSHR (WB)	1.000 EA
39EP1905A01	PUEP ENCL 309 BRG (STAINLESS) POLISHED	1.000 EA
RM1070A80	O-RING, VITON/FKM .070CS X 10.800ID	1.000 EA
HW4600F81	45 X 68 X 10 LIP SEAL, GRAPHITE INFUSED	1.000 EA
HW4600F80	45 X 62 X 4.5 AFS SEAL, GRAPHITE INFUSED	1.000 EA
HW4500S33	1/8 NPT STAINLESS #304 SS PLUG	3.000 EA
HA4002A03	#304 S.S. DRAIN FITTING, .125 NPT (.44 H	1.000 EA
RM1070A78	O-RING, -012 VITON/FKM .070CS X .364ID	4.000 EA
39FH4004A01	304 SS FANCOVER SPUN W/SLOTS & MTG(POLIS	1.000 EA
10XN2520FS08	HEX HD CAP SCREW 1/4-20 X 1/2 SS FOOD SA	3.000 EA

Parts List (continued)		
Part Number	Description	Quantity
HW1001S25	WASHER, 1/4 SPLT LK, STAINLESS STEEL	3.000 EA
39CB1500A01	39 LID, 3 PC. BOX STAINLESS (POLISHED)	1.000 EA
RM1070A79	O-RING, -051 VITON/FKM .070CS X 5.489ID	1.000 EA
HW2502E18	#303 SS,SQ KEY 1/4 X 2.000	1.000 EA
MJ5001A27	32220KN GRAY SEALER *MIN BUY 4 QTS=1GAL	0.005 QT
MJ5004A93	FOOD GRADE (H1 RATED) ANTISEIZE THRD COM	0.005 EA
HA5027A07	85XU1208S08 FACE DRAIN PINS BAGGED	1.000 EA
MJ1000A02	GREASE, POLYREX EM EXXON	0.030 LB
HA3105FS13	THRUBOLT, 3/8-16 X 16.250 SS FOOD SAFE	4.000 EA
HW2502F08	KEY, 5/16 SQ X .875 303 SS	1.000 EA
51XB1214S20	12-14X1.25 HXWSSLD SERTYB, SS	1.000 EA
WD5603A01	KIT, CLOSED-END LEAD SPLICE (18-14GA)	1.000 EA
40PA1000	PACKAGING GROUP	1.000 EA
MN416A01	TAG-INSTAL-MAINT no wire (2200bx) 4/22	1.000 EA
LD7020D09	LEAD SET, 12AWG, 9 LEAD, 20" LONG LEADS	1.000 EA
FE-0000013	ZRTG FE ASSEMBLY	1.000 EA
PE-0000003	ZRTG PE ASSEMBLY	1.000 EA

AC Induction Motor Performance Data

Record # 48151

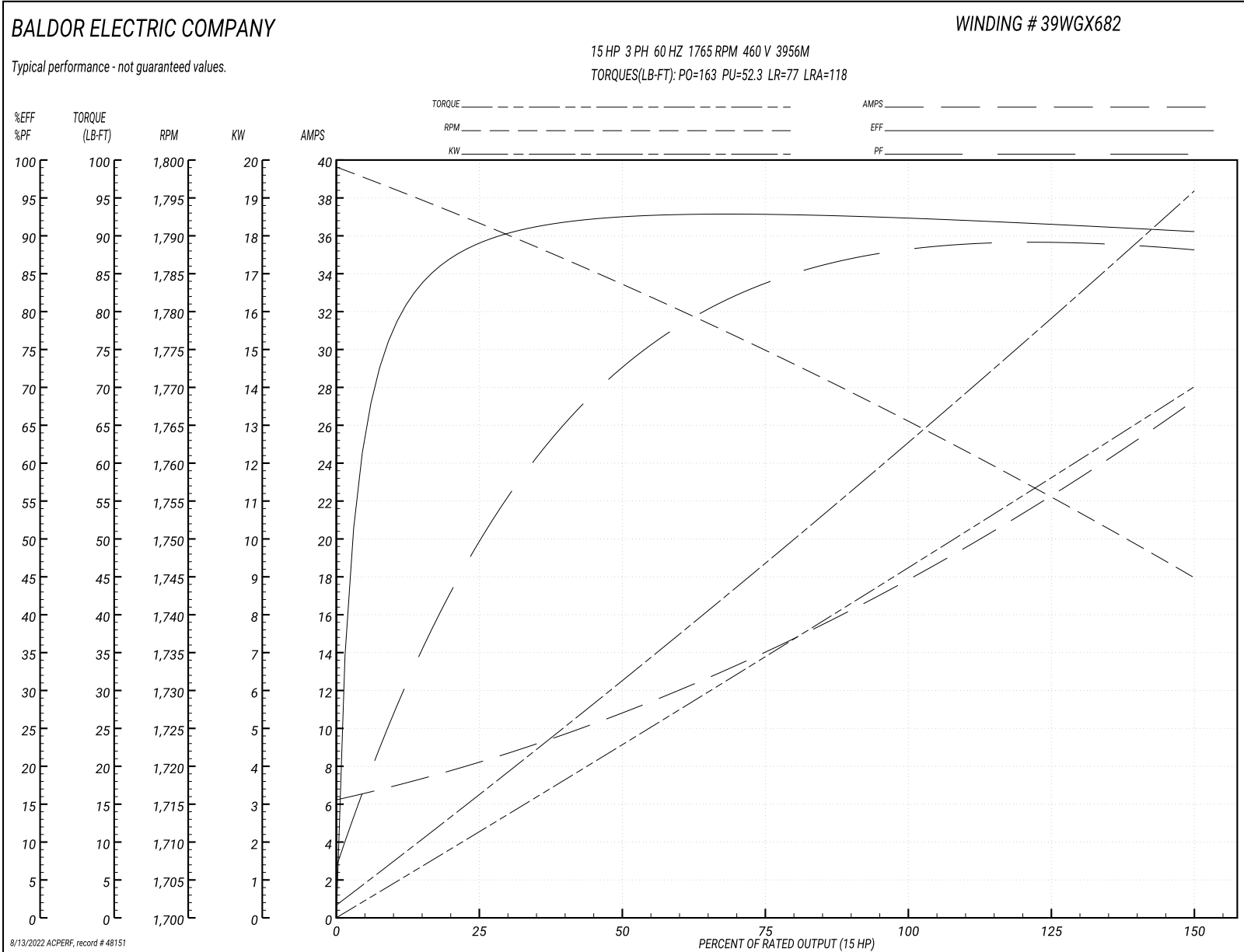
Typical performance - not guaranteed values

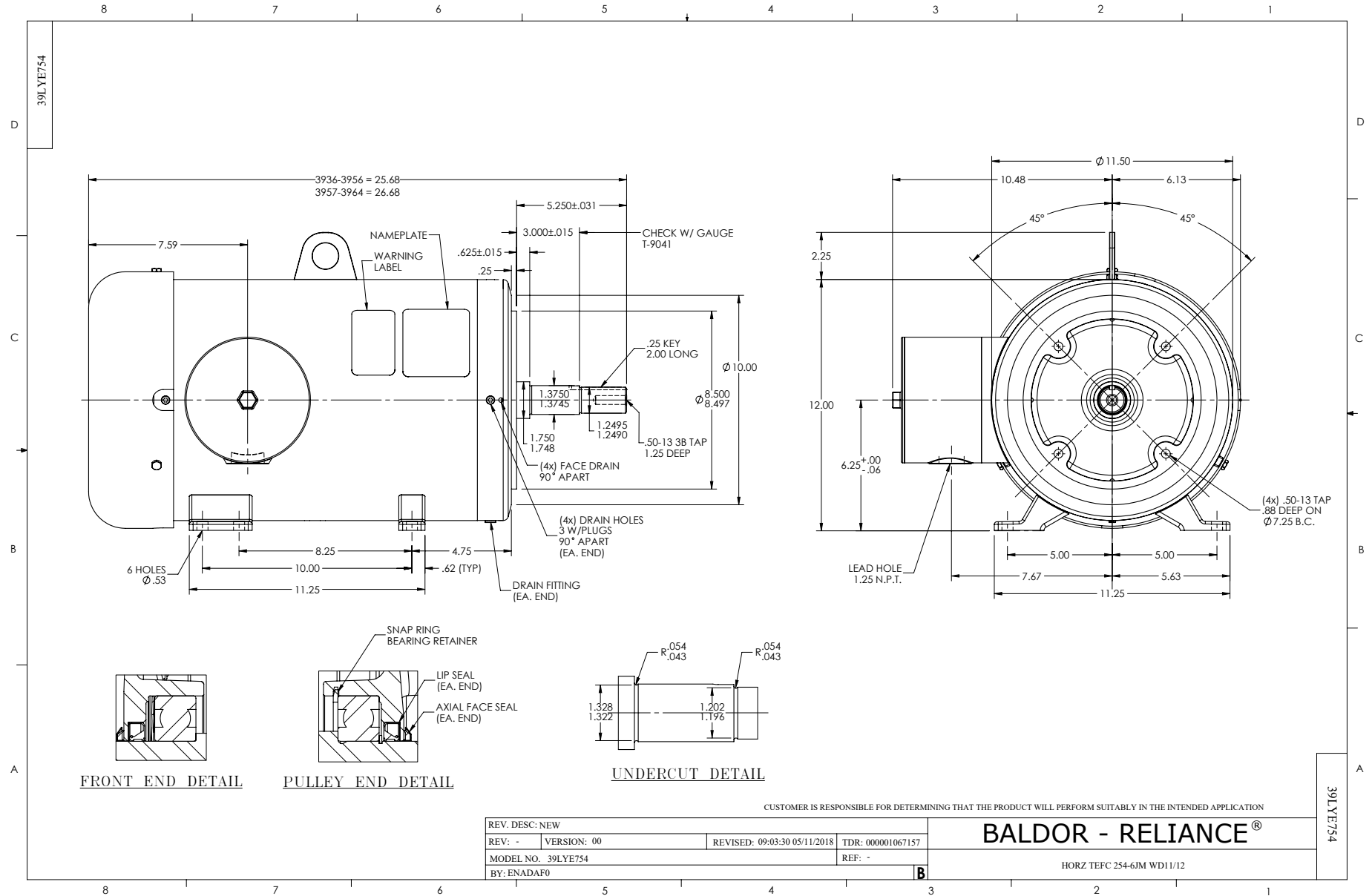
Winding: 39WGX682-R001		Type: 3956M		Enclosure: TEFC	
Nameplate Data			460 V, 60 Hz: High Voltage Connection		
Rated Output (HP)	15	Full Load Torque		44.6 LB-FT	
Volts	230/460	Start Configuration		direct on line	
Full Load Amps	35/17.5	Breakdown Torque		163 LB-FT	
R.P.M.	1765	Pull-up Torque		52.3 LB-FT	
Hz	60 Phase	3	Locked-rotor Torque		77 LB-FT
NEMA Design Code	A KVA Code	G	Starting Current		118 A
Service Factor (S.F.)	1.15	No-load Current		6.54 A	
NEMA Nom. Eff.	92.4 Power Factor	86	Line-line Res. @ 25°C		0.528 Ω
Rating - Duty	40C AMB-CONT	Temp. Rise @ Rated Load		67°C	
S.F. Amps		Temp. Rise @ S.F. Load		81°C	
		Locked-rotor Power Factor		32	
		Rotor inertia		2.45 LB-FT ²	

Load Characteristics 460 V, 60 Hz, 15 HP

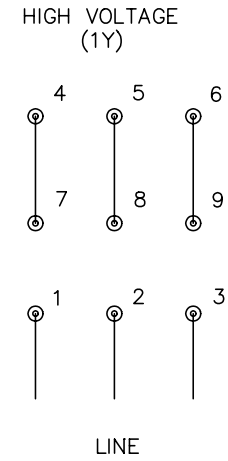
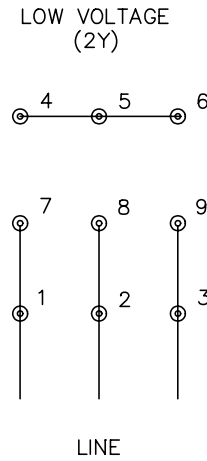
% of Rated Load	25	50	75	100	125	150	S.F.
Power Factor	51	73	82	87	88	89	88
Efficiency	88.6	92.6	92.8	92.6	91.7	90.6	92.1
Speed	1792	1784	1776	1767	1757	1745	1761
Line amperes	7.8	10.4	13.7	17.5	21.7	27.1	20

Performance Graph at 460V, 60Hz, 15.0HP Typical performance - Not guaranteed values





CD0005



- NOTES:
1. INTERCHANGE ANY TWO LINE LEADS TO REVERSE ROTATION.
 2. OPTIONAL THERMOSTATS ARE PROVIDED WHEN SPECIFIED.
 3. ACTUAL NUMBER OF INTERNAL PARALLEL CIRCUITS MAY BE A MULTIPLE OF THOSE SHOWN ABOVE.
 4. LEAD COLORS ARE OPTIONAL. LEADS MUST ALWAYS BE NUMBERED AS SHOWN.

REV. DESC: REVISE TO SHOW OPTIONAL COLORS			
REV. LTR: E	BY: JLP	REVISED: 01/19/99 10:15	TDR: 0171435
90000		FILE: AAA00005140	MDL: -
		MTL: -	

BALDOR ELECTRIC Co.

3PH, DV, 9 LEADS

CD0005

Marketing maintained PDF of MN416:

<http://www.baldor.com/support/Literature/Load.ashx/MN416?ManNumber=MN416>